



HEYClip™ Snap Rivets

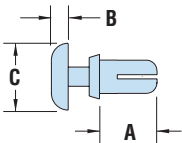
- Designed for **fast and easy installation with no tools** - just fingertip pressure required.
- Simply place rivet into the hole and press down on the head to fasten; legs expand to securely fasten components.
- To release, simply pull up on rivet head section.
- Round head provides a clean, finished look.
- Part Description Key: PR X-Y where X = Mounting Hole Diameter (inches) and Y = minimum Panel Thickness (inches).
- Standard Material: Nylon 6. Nylon 6/6 UL 94V-0 available by special order, consult Heyco.
- Standard Pack - 1,000/bag.

WILL FIT THESE PANELS				PART NO.			DESCRIPTION	PART DIMENSIONS						EXTRACTION FORCE			
MOUNTING HOLE DIA.		ASSEMBLED PANEL THICKNESS		Black	White	V-0 Black *		A Length		B Head Height		C Head Diameter		N	Style		
in.	mm.	Min. in.	Max. mm.					in.	mm.	in.	mm.	in.	mm.			in.	mm.
PR Series																	
.083	2,1	.02	0,5	.05	1,3	9296	9297	9296F	PR 083-024	.10	2,5						
		.05	1,3	.08	2,0	9300	9301	9300F	PR 083-051	.13	3,3						
		.08	2,0	.11	2,8	9302	9303	9302F	PR 083-083	.16	4,1	.05	1,3	.17	4,3	29	2
		.11	2,8	.14	3,6	9304	9305	9304F	PR 083-114	.19	4,8						
		.15	3,8	.17	4,3	9306	9307	9306F	PR 083-146	.22	5,6						
		.17	4,3	.20	5,1	9308	9309	9308F	PR 083-173	.25	6,4						
.102	2,6	.04	1,0	.08	2,0	9020	9021	9020F	PR 102-039	.13	3,3						
		.08	2,0	.12	3,0	9022	9023	9022F	PR 102-082	.17	4,3						
		.11	2,8	.14	3,6	9024	9025	9024F	PR 102-106	.19	4,8	.06	1,5	.20	5,1	49	2
		.13	3,3	.17	4,3	9026	9027	9026F	PR 102-134	.22	5,6						
		.17	4,3	.21	5,3	9310	9311	9310F	PR 102-169	.25	6,4						
		.20	5,1	.24	6,1	9312	9313	9312F	PR 102-201	.28	7,1						
.106	2,7	.13	3,3	.17	4,3	19000	19001	19000F	PR 106-133	.23	5,8	.06	1,5	.20	5,1	49	NEW!
.118	3,0	.14	3,5	.18	4,6	19002	19003	19002F	PR 118-137	.30	7,6	.07	1,8	.24	6,1	122	NEW!
		.14	3,5	.22	5,6	19004	19005	19004F	PR 118-138	.31	7,9	.06	1,5	.24	6,1		NEW!
.122	3,1	.04	1,0	.08	2,0	9028	9029	9028F	PR 122-039	.14	3,5						
		.08	2,0	.12	3,0	9030	9031	9030F	PR 122-079	.18	4,6						
		.12	3,0	.16	4,1	9032	9033	9032F	PR 122-118	.22	5,6						
		.16	4,1	.19	4,8	9034	9035	9034F	PR 122-157	.26	6,6						
		.20	5,1	.24	6,1	9036	9037	9036F	PR 122-197	.30	7,6						
		.22	5,5	.26	6,6	9038	9039	9038F	PR 122-217	.32	8,1	.06	1,5	.25	6,4	78	2
		.26	6,6	.30	7,6	9040	9041	9040F	PR 122-256	.35	8,9						
		.30	7,6	.34	8,6	9042	9043	9042F	PR 122-295	.39	9,9						
		.45	11,4	.51	13,0	9314	9315	9314F	PR 122-453	.57	14,5						
		.81	20,6	.85	21,6	9316	9317	9316F	PR 122-807	.91	23,1						
.142	3,6	.05	1,3	.08	2,0	9044	9045	9044F	PR 142-047	.14	3,5						
		.08	2,0	.12	3,0	9046	9047	9046F	PR 142-083	.18	4,6						
		.11	2,8	.14	3,6	9048	9049	9048F	PR 142-106	.20	5,1	.06	1,5	.25	6,4	118	1
		.12	3,0	.16	4,1	9050	9051	9050F	PR 142-118	.22	5,6						
		.15	3,8	.18	4,6	9052	9053	9052F	PR 142-146	.24	6,1						
		.18	4,6	.22	5,6	9054	9055	9054F	PR 142-177	.28	7,1						
.157	4,0	.09	2,3	.11	2,8	19006	19007	19006F	PR 157-086	.22	5,6	.08	2,0	.31	7,9	196	1
		.21	5,3	.24	6,1	19008	19009	19008F	PR 157-212	.31	7,9	.07	1,8	.32	8,1		NEW!
		.41	10,4	.45	11,4	19010	19011	19010F	PR 157-413	.53	13,5	.08	2,0	.31	7,9	196	2
																	NEW!
.161	4,1	.10	2,5	.14	3,5	9058	9059	9058F	PR 161-098	.20	5,1						
		.14	3,5	.18	4,6	9060	9061	9060F	PR 161-138	.24	6,1						
		.18	4,6	.22	5,6	9062	9063	9062F	PR 161-177	.28	7,1						
		.22	5,6	.26	6,6	9064	9065	9064F	PR 161-217	.32	8,1						
		.26	6,6	.30	7,6	9066	9067	9066F	PR 161-256	.35	8,9	.07	1,8	.32	8,1	196	1
		.30	7,6	.34	8,6	9068	9069	9068F	PR 161-295	.39	9,9						
		.35	8,9	.41	10,4	9318	9319	9318F	PR 161-354	.47	11,9						
		.49	12,4	.55	14,0	9320	9321	9320F	PR 161-492	.61	15,5						

Available in Small Packs

NEW

PART NO.		DESCRIPTION	QTY
Black	White		
9028-P	9029-P	PR 122-039 100PK	100
9030-P	9031-P	PR 122-079 100PK	
9032-P	9033-P	PR 122-118 100PK	
9034-P	9035-P	PR 122-157 100PK	
9036-P	9037-P	PR 122-197 100PK	
9038-P	9039-P	PR 122-217 100PK	
9058-P	9059-P	PR 161-098 50PK	50
9060-P	9061-P	PR 161-138 50PK	
9062-P	9063-P	PR 161-177 50PK	
9064-P	9065-P	PR 161-217 50PK	
9066-P	9067-P	PR 161-256 50PK	
9068-P	9069-P	PR 161-295 50PK	
9074-P	9075-P	PR 201-138 50PK	
9076-P	9077-P	PR 201-177 50PK	
9078-P	9079-P	PR 201-217 50PK	
9080-P	9081-P	PR 201-256 50PK	
9082-P	9083-P	PR 201-295 50PK	
9084-P	9085-P	PR 240-098 20PK	20
9324-P	9325-P	PR 240-138 20PK	



STYLE 1

STYLE 2

Quick Specs

Standard colors black and white.
*Black nylon 6/6 UL 94V-0.

Material	Nylon 6 UL V-2
Flammability Rating	94V-2
Temperature Range	-40°F (-40°C) to 239°F (115°C)

“Stay Connected” with



HEYware Products

a PennEngineering® Company

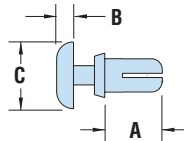


HEYClip™ Snap Rivets – continued

WILL FIT THESE PANELS				PART NO.			DESCRIPTION	PART DIMENSIONS						EXTRACTION FORCE			
MOUNTING HOLE DIA.	ASSEMBLED PANEL THICKNESS		Black	White	V-0 Black *	A Length		B Head Height		C Head Diameter		N	Style				
	in.	mm.					Min.	Max.	in.	mm.	in.			mm.	in.	mm.	
PR Series																	
.201	5,1	.06	1,5	.10	2,5	9070	9071	9070F	PR 201-059	.18	4,6					245	1
		.10	2,5	.14	3,5	9072	9073	9072F	PR 201-098	.22	5,6						
		.14	3,5	.18	4,6	9074	9075	9074F	PR 201-138	.26	6,6						
		.18	4,6	.22	5,6	9076	9077	9076F	PR 201-177	.30	7,6	.09	2,3	.35	8,9		
		.22	5,6	.26	6,6	9078	9079	9078F	PR 201-217	.34	8,6						
		.26	6,6	.30	7,6	9080	9081	9080F	PR 201-256	.37	9,4						
		.30	7,6	.34	8,6	9082	9083	9082F	PR 201-295	.41	10,4						
.232	5,9	.12	3,0	.16	4,1	9322	9323	9322F	PR 232-118	.25	6,4	.11	2,8	.47	11,9		
.240	6,1	.10	2,5	.16	4,1	9084	9085	9084F	PR 240-098	.24	6,1	.10	2,5			294	
		.14	3,5	.22	5,6	9324	9325	9324F	PR 240-138	.32	8,1	.12	3,0				

Standard colors black and white.

*Black nylon 6/6 UL 94V-0.



STYLE 1



STYLE 2



- Designed for **fast and easy installation with no tools** - just fingertip pressure required.
- Simply place rivet into the hole and press down on the head to fasten; legs expand to securely fasten components.
- To release, simply pull up on rivet head section.
- Round head provides a clean, finished look.
- Part Description Key: PR X-Y where X = Mounting Hole Diameter (inches) and Y = minimum Panel Thickness (inches).
- Standard Material: Nylon 6. Nylon 6/6 UL 94V-0 available by special order, consult Heyco.
- Standard Pack - 1,000/bag.
- See Quick Specs on opposite page.

HEYClip™ Heat Resistant Snap Rivets

WILL FIT THESE PANELS				PART NO.			DESCRIPTION	PART DIMENSIONS						EXTRACTION FORCE	
MOUNTING HOLE DIA.	ASSEMBLED PANEL THICKNESS		Tan Nylon 4/6 UL94V-2	Tan	V-0 Black *	A Length		B Head Height		C Head Diameter		N	Style		
	in.	mm.					Min.	Max.	in.	mm.	in.			mm.	in.
PR Tan Series															
.122	3,1	.04	1,0	.08	2,0	9028H	PR 122-039 HR Tan	.14	3,5					78	2
		.08	2,0	.12	3,0	9030H	PR 122-079 HR Tan	.18	4,5						
		.12	3,0	.16	4,0	9032H	PR 122-118 HR Tan	.22	5,6	.06	1,6	.25	6,4		
		.16	4,0	.19	5,0	9034H	PR 122-157 HR Tan	.26	6,5						
		.22	5,5	.26	6,5	9038H	PR 122-217 HR Tan	.32	8,0						
.142	3,6	.05	1,2	.08	2,1	9044H	PR 142-047 HR Tan	.14	3,5					118	1
		.08	2,1	.12	3,0	9046H	PR 142-083 HR Tan	.18	4,5						
		.11	2,7	.14	3,6	9048H	PR 142-106 HR Tan	.20	5,0	.06	1,6	.25	6,4		
		.12	3,0	.16	4,0	9050H	PR 142-118 HR Tan	.22	5,6						
.161	4,1	.10	2,5	.14	3,5	9058H	PR 161-098 HR Tan	.20	5,0					196	1
		.14	3,5	.18	4,5	9060H	PR 161-138 HR Tan	.24	6,0						
		.18	4,5	.22	5,5	9062H	PR 161-177 HR Tan	.28	7,0	.07	1,8	.32	8,0		
		.22	5,5	.26	6,5	9064H	PR 161-217 HR Tan	.32	8,0						
		.30	7,5	.34	8,5	9068H	PR 161-295 HR Tan	.39	10,0						

Standard color tan (beige).



- Molded from Nylon 4/6 94V-2 - **heat resistant to 266°F (130°C)**.
- Automotive **tan** (beige) color.
- Designed for fast and easy installation with no tools - just fingertip pressure required.
- Simply place rivet into the hole and press down on the head to fasten; legs expand to securely fasten components.
- Part Description Key: PR X-Y where X = Mounting Hole Diameter (inches) and Y = minimum Panel Thickness (inches).
- Standard Pack - 1,000/bag.

Material Nylon 4/6
 Flammability Rating 94V-2
 Temperature Range -4°F (-18°C) to 266°F (130°C)

Quick Specs