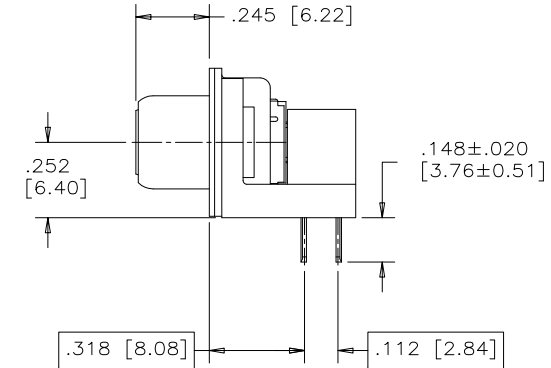
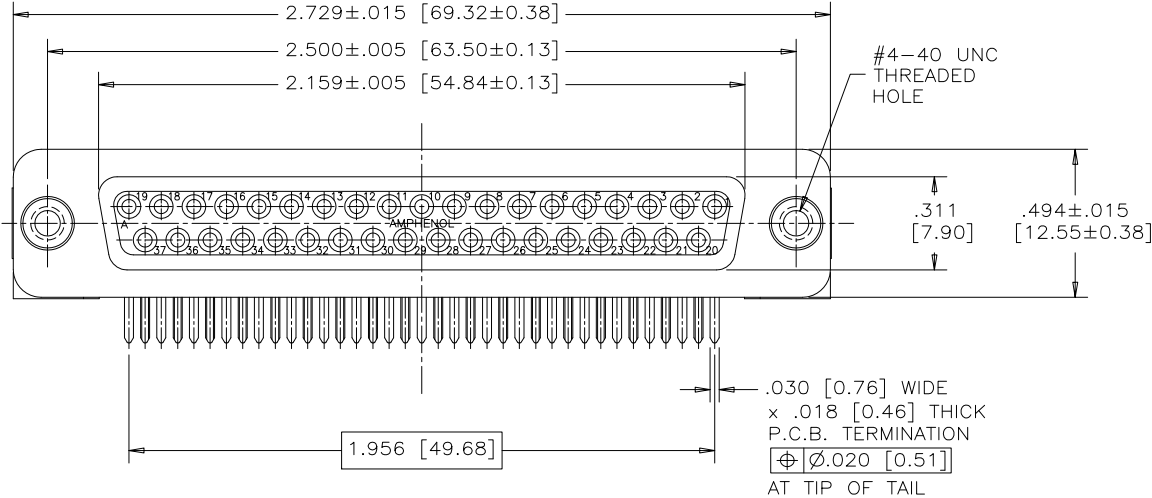
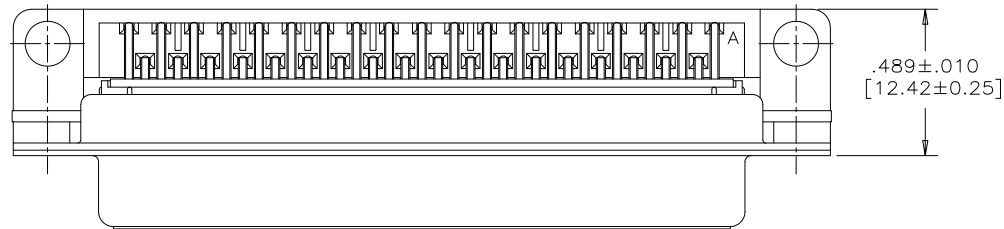


REVISIONS			
REV	ECN, ERN NO.	DATE	APPRD.
A	PRODUCT DRAWING (EAR 14134)	OCT16/12	K.L.



NOTES:

1. MATERIALS: — SHELLS — TIN PLATED STEEL
— CONTACTS — PHOSPHOR BRONZE PLATED WITH 15μ" [0.38μm] GOLD OVER 50μ" [1.27μm] NICKEL ON THE MATING AREA AND TIN-LEAD ON THE TERMINALS
— INSULATOR — ENGINEERING THERMOPLASTIC, FLAMMABILITY RATING UL94V-0, BLACK
2. CONTACT RESISTANCE: 15 MILLIOHMS MAXIMUM
3. INSULATION RESISTANCE: 3000 MEGOHMS MINIMUM
4. DIELECTRIC WITHSTANDING VOLTAGE: 600 VDC
5. CURRENT RATING: 5 AMPS MAXIMUM
6. OPERATING TEMPERATURE: -40°C TO 85°C
7. TOLERANCE, UNLESS INDICATED OTHERWISE, ±.005 [0.13]

ORDERING CODE: F C C 1 7 - C 3 7 S A - 3 9 1

SERIES

SIZE/NUMBER OF CONTACTS
C37

CONNECTOR STYLE
S=SOCKET

TERMINATION TYPE
A=.318"[8.08] FOOTPRINT

MOUNTING
3=#4-40 UNC THREAD

MODIFIER

1=BOARDLOCK OMITTED

FILTER CAPACITANCE

9=5600 pF ±15%

REFER TO AMPHENOL CATALOGUE FOR FILTER PERFORMANCE CHARACTERISTICS

MATERIAL -----	DRAWN A.ESPIE	DATE OCT16/12	Amphenol Canada Corp.	
	DESIGNED			
	CHECKED			
	I. E. APPRD.			
	Q. A. APPRD.			
FINISH -----	DWG. APPRD. K.LAMBIE	OCT16/12	TITLE FCC17 FILTERED D-SUB, 37 SIZE SOCKET, .318 F/P BEND, PLASTIC BRACKET, #4-40 THREAD, BOARDLOCK OMITTED	
	ENG. REL. NO.			
	REF. EAR 14134			
	DIMENSIONS ARE IN INCHES [mm]	CODE ID. NO. 03554		
		DWG. C	DRAWING NO. P-FCC17-C37SA-391	REV. A
		SCALE 3/1	WT. -----	SURF. -----
		SHEET 1 OF 1		

THIS DOCUMENT CONTAINS PROPRIETARY INFORMATION AND SUCH INFORMATION MAY NOT BE DISCLOSED TO OTHERS FOR ANY PURPOSE OR USED FOR MANUFACTURING PURPOSES WITHOUT WRITTEN PERMISSION FROM AMPHENOL CANADA CORP.