

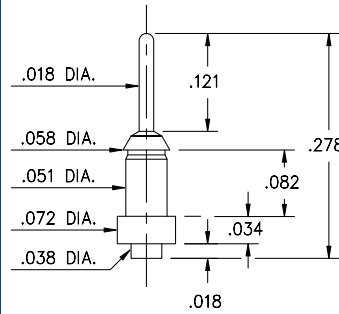
0259/0286/1941



Basic Part Number	Length L	Barb Dia. E	Mounting Hole
0259-0	.173	.062	.059
0286-0	.115	.060	.057
1941-0	.169	.058	.057

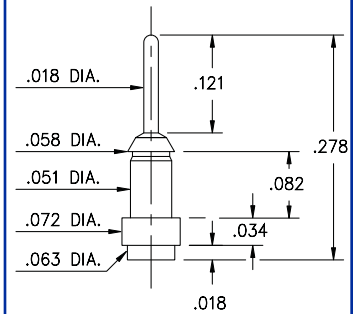
02XX-0-00-XX-00-00-03-0
Press-fit in .057/.059 mounting hole

2956-0



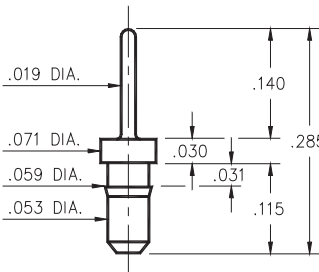
2956-0-00-XX-00-00-03-0
Surface mount

2956-1



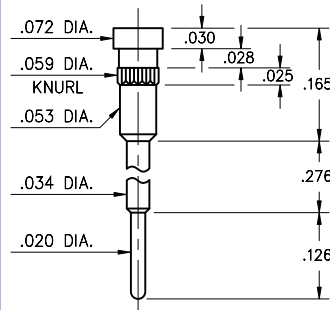
2956-1-00-XX-00-00-03-0
Surface mount

8876



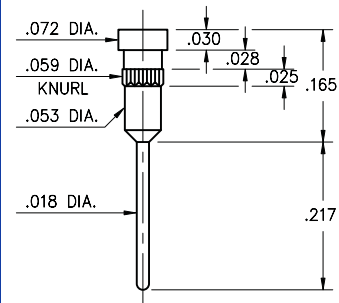
8876-0-00-XX-00-00-03-0
Press-fit in .057 mounting hole

1938



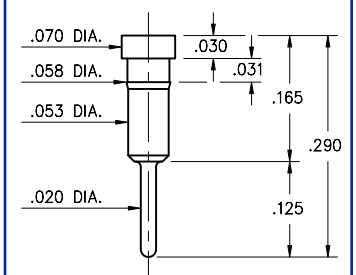
1938-0-00-XX-00-00-03-0
Press-fit in .057 mounting hole

1940



1940-0-00-XX-00-00-03-0
Press-fit in .057 mounting hole

1942



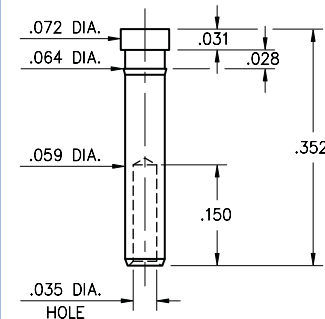
1942-0-00-XX-00-00-03-0
Press-fit in .057 mounting hole

3024



3024-0-01-XX-00-00-03-0
Press-fit in .057 mounting hole

3000



3000-0-00-XX-00-00-03-0
Press-fit in .061 mounting hole

SPECIFICATIONS

PIN MATERIAL:
Brass Alloy 360, 1/2 Hard
(Except Swage pins which are annealed)

DIMENSION IN INCHES
TOLERANCES ON:
LENGTHS: ±.005
DIAMETERS: ±.002
ANGLES: ± 2°

ORDER CODE: XXXX - X - 0X - XX - 00 - 00 - XX - 0

BASIC PART #

SPECIFY PIN FINISH:

- 01 200µ" TIN/LEAD OVER NICKEL
- ◇ 80 200µ" TIN OVER NICKEL (RoHS)
- ◇ 15 10µ" GOLD OVER NICKEL (RoHS)
- ◇ 21 20µ" GOLD OVER NICKEL (RoHS)
- ◇ 34 50µ" GOLD OVER NICKEL (RoHS)

