

THIS DOCUMENT CONTAINS PROPRIETARY DATA OF POLARIS INDUSTRIAL ENTERPRISES, INC. NO DISCLOSURE, REPRODUCTION, OR USE OF ANY PART THERE OF MAY BE MADE EXCEPT BY WRITTEN PERMISSION.

REV.	BY	DATE	APPRVL.	P/N
C	DMS	1-12-98	BT	LCP15 ADDED LCP15" T" CALLOUT.

ELECTRICAL

RESISTANCE RANGE ----- SEE CHART
 RESISTANCE TOLERANCE ----- ±10%
 LINEARITY, INDEPENDENT ----- SEE CHART
 RESOLUTION ----- ESSENTIALLY INFINITE
 MINIMUM RESISTANCE ----- 1 OHM OR 0.1%
 STROKE ----- SEE CHART
 OUTPUT SMOOTHNESS ----- <0.1% AGAINST INPUT VOLTAGE
 POWER RATING @40°C ----- SEE CHART
 INSULATION RESISTANCE ----- 1000 MEGOHMS AT 1000 VDC
 DIELECTRIC STRENGTH ----- 1 MIN @ 1000VAC
 CONTACT RESIS. VARIATION ----- BELOW 2% C.R.V.

MECHANICAL

STROKE ----- SEE CHART
 STOP STRENGTH ----- 2.2 LBS. MIN.
 FRICTION ----- BELOW 30 GRAMS
 LIFE ----- 20,000,000 STROKES

ENVIRONMENTAL

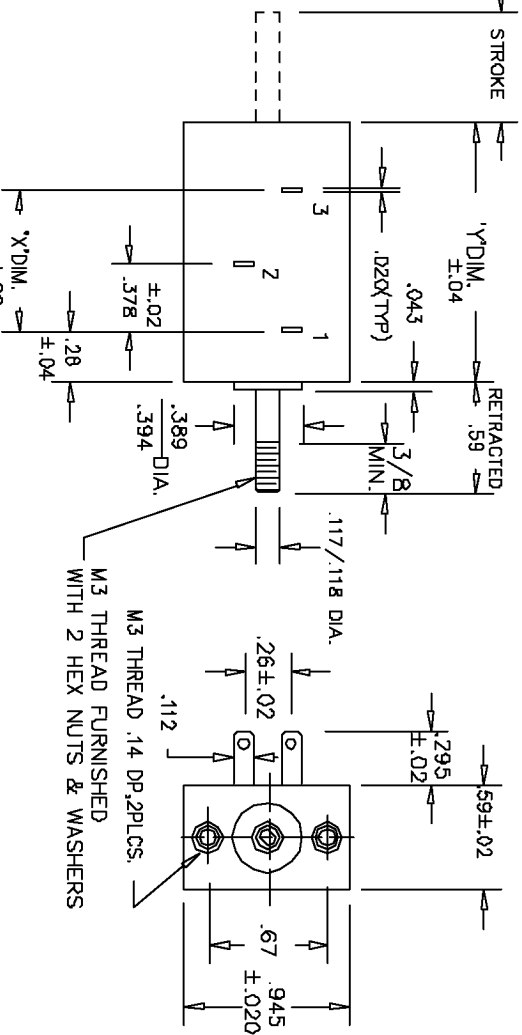
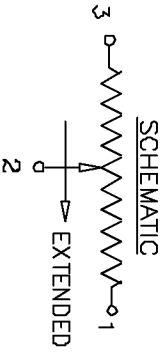
OPERATING TEMPERATURE RANGE ----- 30°C TO 105°C
 TEMPERATURE COEFFICIENT ----- 400 PPM/°C
 VIBRATION ----- 10HZ TO 2,000HZ 15G
 MOISTURE RESISTANCE ----- 40°C 95%RH 120 HOURS
 SHOCK ----- 50G 11ms

MATERIALS

HOUSING ----- THERMO-SETTING PLASTIC
 SHAFT ----- STAINLESS STEEL
 TERMINALS ----- GOLD PLATED
 RESISTIVE ELEMENT ----- CONDUCTIVE PLASTIC

NON-STANDARD OPTIONS

SPECIAL RESIS. & LINEARITY ----- NOTE: TERMINALS ACCEPT AMP#110
 MACHINED SHAFTS ----- CONNECTORS.
 SPRING RETURN



DIMENSION TABLE

DASH NO.	APPROX WEIGHT	MECHANICAL STROKE +.080-.000	ELEC. STROKE ±.020	RESIS. RANGE	LINEARITY STANDARD	LINEARITY PRECISION	POWER RATING
-10	1 OZ.	.394	.394	500/10K	± 2%	± 1%	0.2 WATTS
-15	1 OZ.	.590	.590	500/10K	± 1%	± 0.5%	0.3 WATTS
-20	1 OZ.	.787	.787	500/10K	1%	0.5%	0.4 WATTS
-30	1 OZ.	1.181	1.181	500/10K	1%	0.5%	0.5 WATTS

MODEL NO.'S.

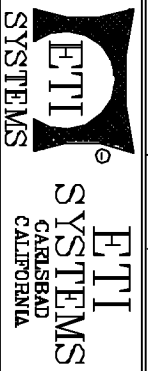
SHAFT STYLES

LCP15P-(STROKE)-(RES.)	(P)		PLAIN
LCP15C-	(C)		CHAMFERED
LCP15S-	(S)		SPRING RETURN (INTERNAL)
LCP15T-	(T)		THREADED

TOLERANCES

XX - +/- .010" FRACT. - +/- 1/64"
 XXX - +/- .005" ANGLES - +/- 1/2"
 ALL SPECIFICATIONS SUBJECT TO CHANGE WITHOUT NOTICE

SCALE	DATE: 11-6-88
NONE	BY
CODE	APPRV'D
IDENT: 19477	BT



TITLE
 LINEAR MOTION
 POTENTIOMETER

PART NO.
 LCP15