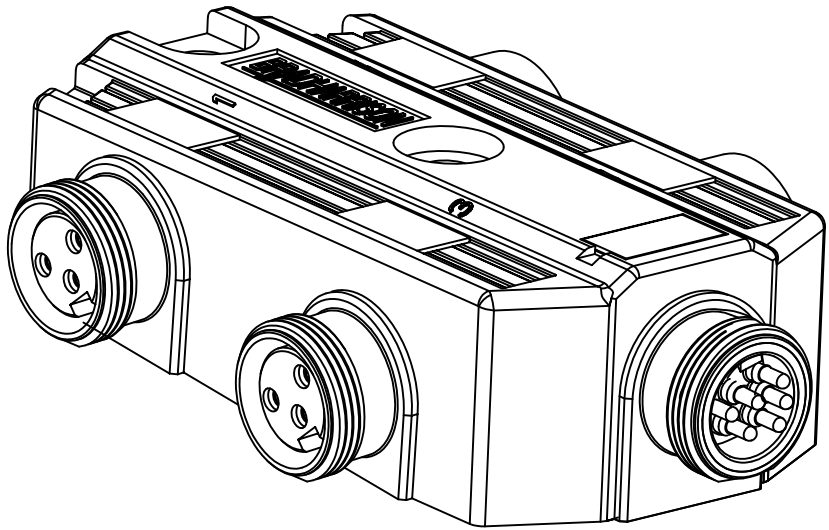
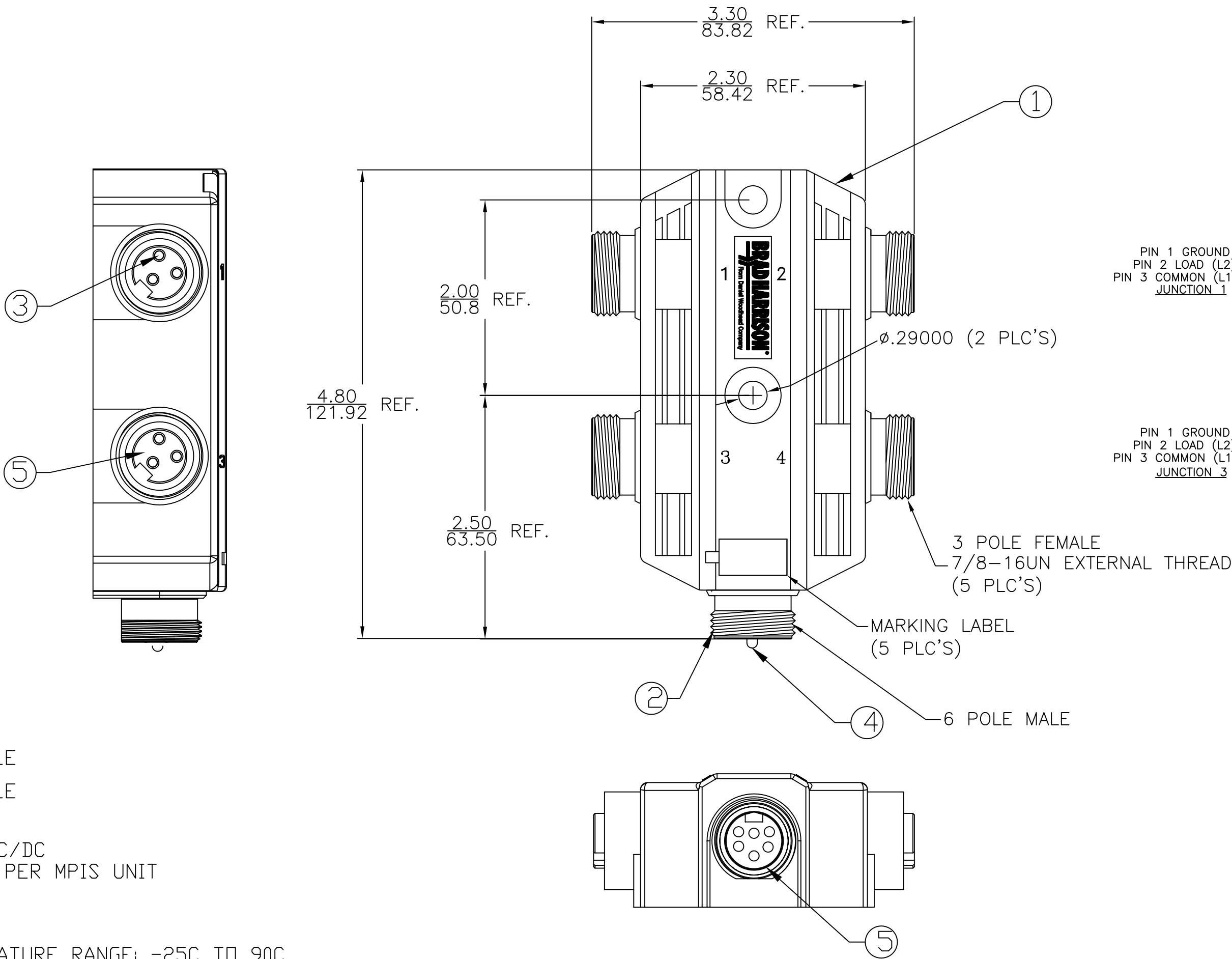


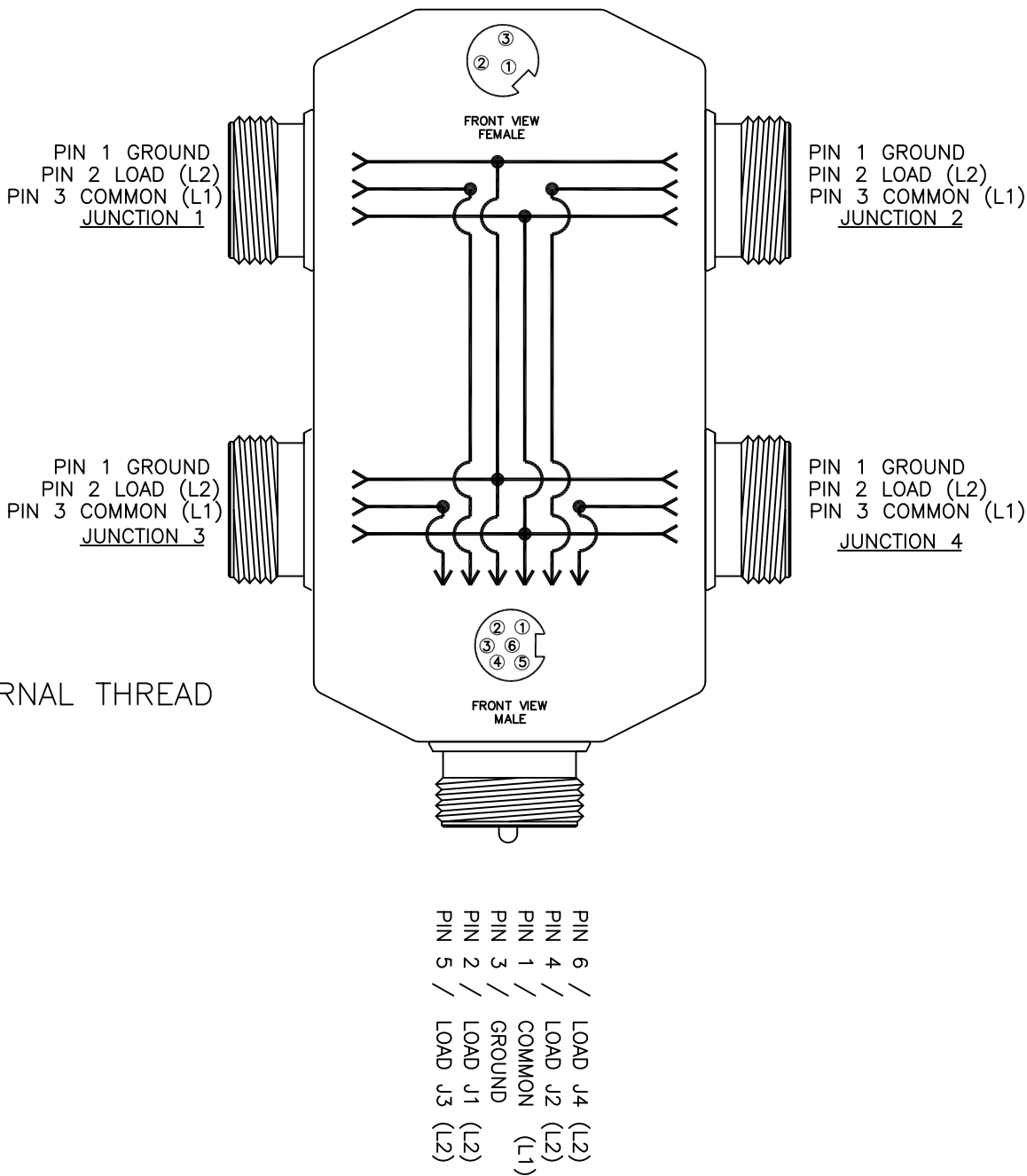
|                 |                    |
|-----------------|--------------------|
| MATERIAL NUMBER | ENGINEERING NUMBER |
| 1300600001      | 409P401            |



DIMENSIONAL



SCHEMATIC



NOTES:

- 1) MATERIAL: SEE TABLE
- 2) FINISHES: SEE TABLE
- 3) ELECTRICAL DATA:  
VOLTAGE: 600V AC/DC  
AMPERAGE: 7AMPS PER MPIS UNIT
- 4) ENVIRONMENTAL:  
PROTECTION IP67  
OPERATING TEMPERATURE RANGE: -25C TO 90C
- 5) LABEL IS MARKED WITH P/N, DATE CODE, AND SCHEMATIC
- 6) CERTIFICATION:  
UL: UL RECOGNIZED  
CSA: CSA CERTIFIED

|      |      |                  |                     |             |
|------|------|------------------|---------------------|-------------|
| 5    | 5    | INSERT           | PVC                 | YELLOW      |
| 4    | 6    | PIN CONTACT      | COPPER ALLOY        | GOLD PLATED |
| 3    | 12   | SOCKET CONTACT   | COPPER ALLOY        | GOLD PLATED |
| 2    | 5    | RECEPTACLE SHELL | E-COATED ZINC ALLOY | BLACK       |
| 1    | 1    | HOUSING          | PBT                 | YELLOW      |
| ITEM | QTY. | DESCRIPTION      | MATERIAL            | FINISH      |

|   |                    |   |   |       |       |  |              |   |                      |   |  |  |
|---|--------------------|---|---|-------|-------|--|--------------|---|----------------------|---|--|--|
| RELEASE<br>EC NO: WNA2010-0456<br>DRWN: TWOLDEGE 2010/01/22<br>CHKD: BWOODMAN<br>APPR: JFMURPHY 2010/01/29<br>A | DESCRIPTION<br>REV | QUALITY<br>SYMBOL<br><div>▽=0</div> <div>▽C=0</div> | GENERAL TOLERANCES<br>(UNLESS SPECIFIED)                      |       |       | DIMENSION STYLE<br>----  |              | SCALE<br>1:1  | DESIGN UNITS<br>INCH | THIRD ANGLE<br>PROJECTION<br><div>◎ ▱</div> |  |  |
|   |                    |   |   | mm    | INCH  | DRAWN BY<br>----   | DATE<br>---- | TITLE<br>4PORT SIDE MOUNT MPIS<br>4PORT 3-POLE FEMALE W/<br>6P MALE HOME RUN CONN.<br><div>MOLEX</div> MOLEX INCORPORATED |                      |   |  |  |
|   |                    |   | 4 PLACES  | ±---  | ±---  | CHECKED BY<br>BWOODMAN   | DATE<br>---- |   |                      |   |  |  |
|   |                    |   | 3 PLACES  | ±---  | ±.005 | APPROVED BY<br>JFMURPHY 2010/01/29   |              |   |                      |   |  |  |
|   |                    |   | 2 PLACES  | ±0.13 | ±.010 |  |              |   |                      |   |  |  |
|   |                    |   | 1 PLACE   | ±0.25 | ±.020 | MATERIAL NO.<br>SEE CHART  |              | DOCUMENT NO.<br>SD-130060-003   | SHEET NO.<br>1 OF 1  |   |  |  |
|   |                    |   | ANGULAR ±1/2°   |       |       | THIS DRAWING CONTAINS INFORMATION THAT IS PROPRIETARY TO MOLEX<br>INCORPORATED AND SHOULD NOT BE USED WITHOUT WRITTEN PERMISSION |              |   |                      |   |  |  |
|   |                    |   | DRAFT WHERE<br>APPLICABLE<br>MUST REMAIN<br>WITHIN DIMENSIONS |       |       |  |              |   |                      |   |  |  |
|   |                    |   | SIZE<br>C   |       |       |  |              |   |                      |   |  |  |