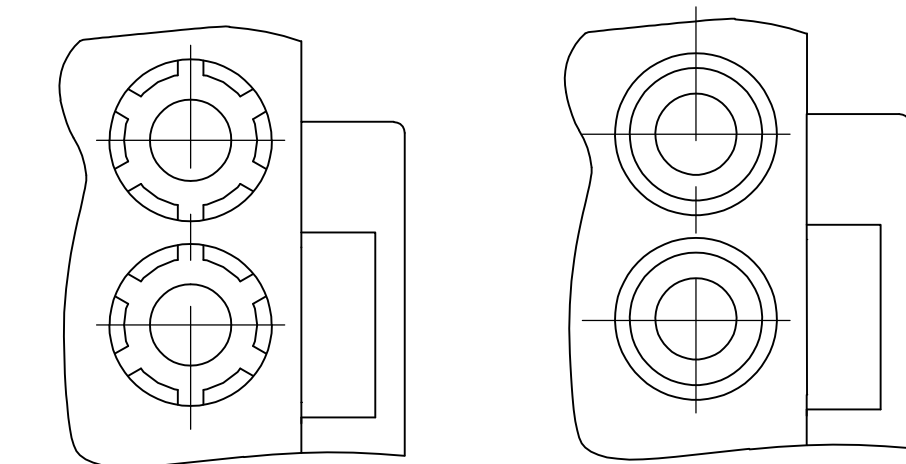
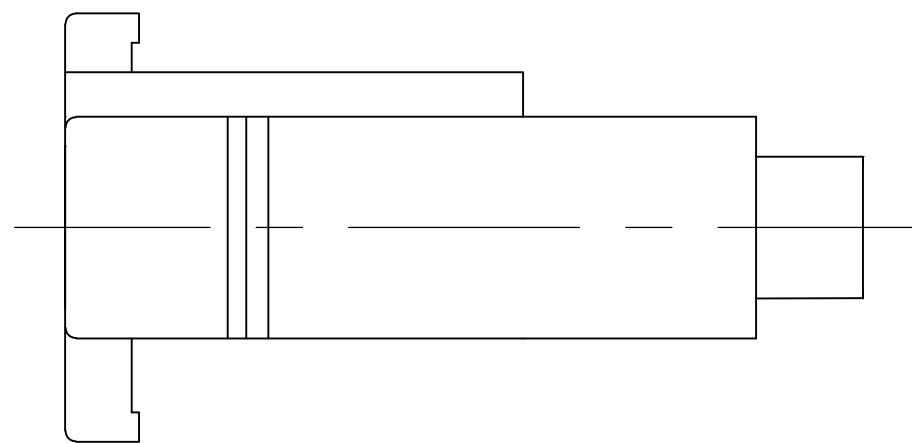
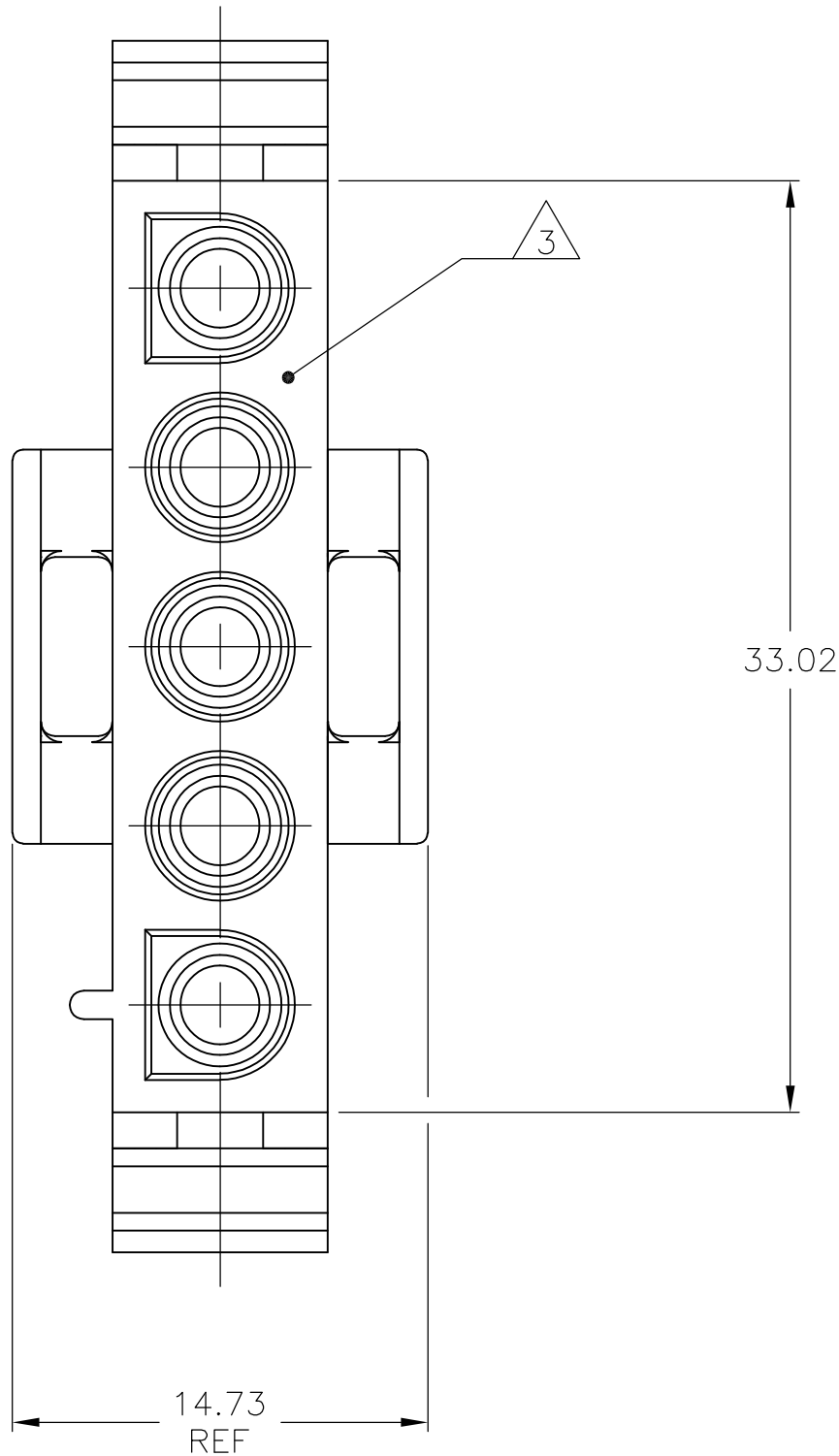
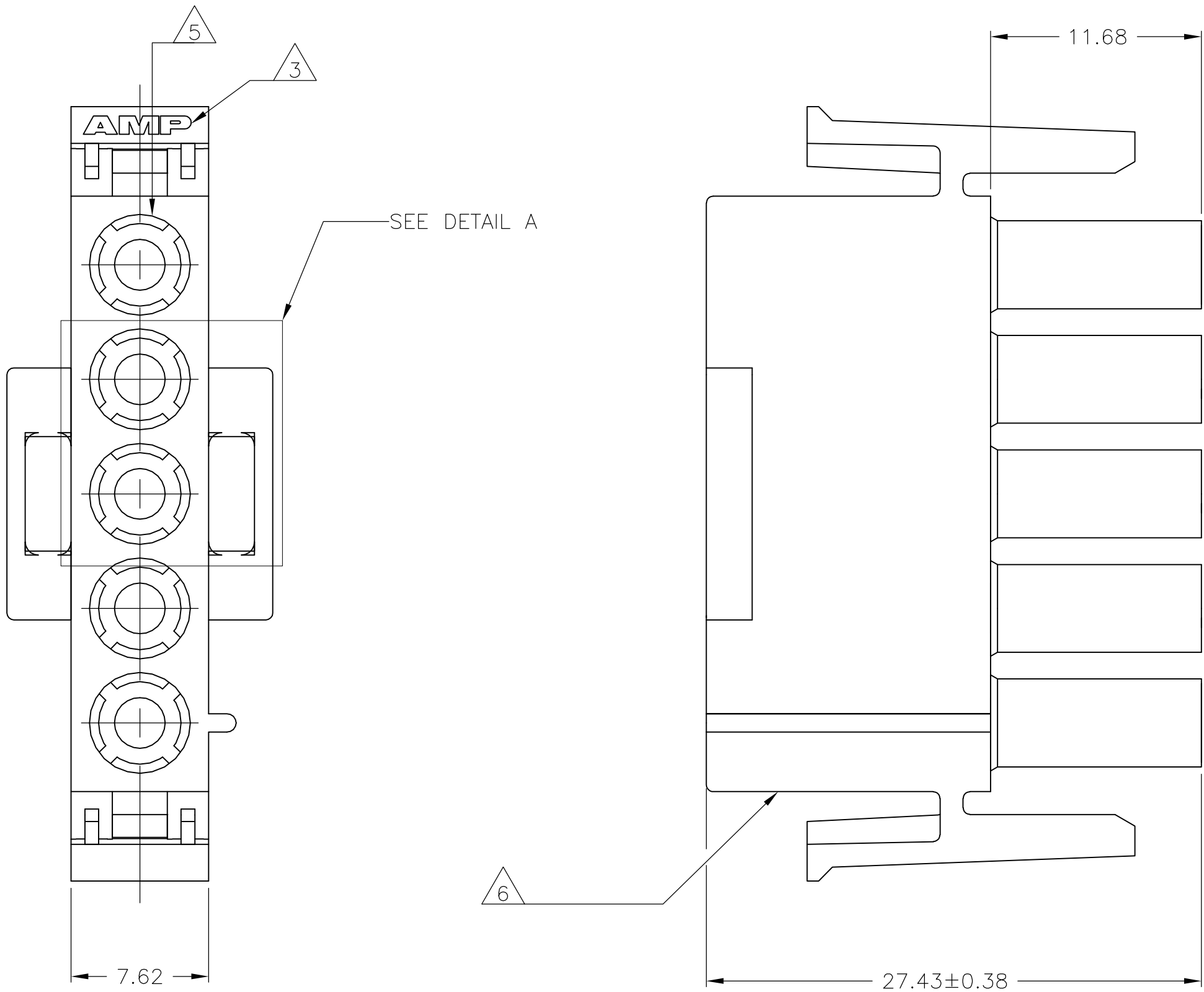


D

C

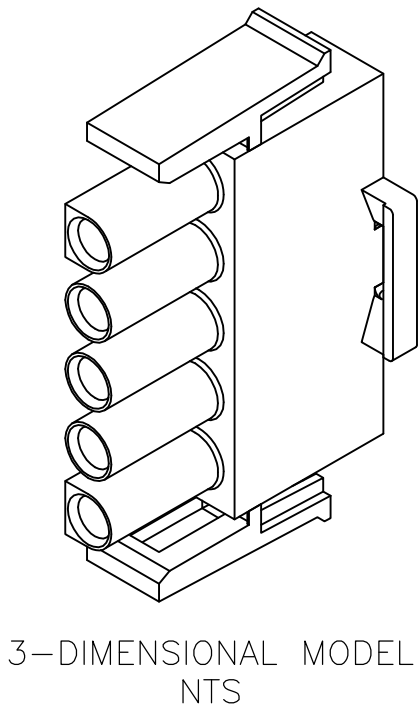
B

A



CONSTRUCTION OPTIONAL 2 CONSTRUCTION OPTIONAL 3


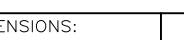
DETAIL A
OPTIONAL CONSTRUCTIONS



33.02	1.300
27.43	1.080
14.73	.580
11.68	.460
7.62	.300
0.38	.015
0.13	.005
MM	IN
CONVERSION TABLE	

- MATES WITH APPROPRIATE UNIVERSA MATE-N-LOK™ CAP OR HEADER.
- SMALL NICKS ARE PERMITTED ON THE CIRCUIT TOWERS WHICH COULD INCREASE THE INITIAL HOUSING MATING FORCE BY UP TO 4.4 NEWTONS [1.0 LBS]. NO INDIVIDUAL NICKED TOWER SHALL INCREASE THIS FORCE BY OVER 2.2 NEWTONS [.5 LBS].
- OPTIONAL: AMP LOGO MAY BE LOCATED ON THIS SURFACE.
- DIMENSIONS SHOWN REPRESENT PRODUCT IN DRY, AS MOLDED, CONDITION. ADDITIONAL 2% GROWTH DUE TO SUBSEQUENT MOISTURE ABSORPTION MAY OCCUR AND SHOULD BE ACCOUNTED FOR.
- FOUR RIBS EQUALLY SPACED, NO SPECIFIC ORIENTATION. NO RIBS OR SIX RIBS EQUALLY SPACED, NO SPECIFIC ORIENTATION, OPTIONAL.
- UNDERWRITERS RECOGNIZED COMPONENT LOGO AND CSA CERTIFICATION LOGO TO BE LOCATED ONCE EACH ON SIDE OF HOUSING.
- OBSOLETE PARTS: OBSOLETE CIS STREAMLINING PER D.RENAUD/D.SINISI
- SIX RIB CONSTRUCTION OPTION 2 ONLY FOR P/N 1-480763-1. FOUR RIB CONSTRUCTION OPTION 1 AND NO RIB CONSTRUCTION OPTION 3 NOT PERMISSIBLE FOR P/N 1-480763-1.
- PRELIMINARY – NOT FOR PRODUCTION

<div>7</div> OBSOLETE	BLACK	480763-9
	GRAY	480763-8
	BLUE	480763-6
	GREEN	480763-5
	YELLOW	480763-4
	ORANGE	480763-3
	RED	480763-2
	BROWN	480763-1
	NATURAL	1-480763-0
	NATURAL	<div>98</div> 1-480763-1
	COLOR	PART NO.

THIS DRAWING IS A CONTROLLED DOCUMENT.		DWN R. VESTAL 24FEB95	 TE Connectivity			
		CHK R. SWING 24FEB95				
DIMENSIONS: mm	TOLERANCES UNLESS OTHERWISE SPECIFIED: 0 PLC ± - 1 PLC ± - 2 PLC ± 0.13 3 PLC ± - 4 PLC ± - ANGLES ± 0°30'	APVD D. SELF 24FEB95	NAME PLUG, 5 CIRCUIT, UNIVERSAL MATE-N-LOK™			
		PRODUCT SPEC				
		APPLICATION SPEC				
		FINISH				
 MATERIAL NYLON, UL 94V-2		WEIGHT 0.000000	SIZE A1	CAGE CODE 00779	DRAWING NO C480763	RESTRICTED TO —
		CUSTOMER DRAWING				
			SCALE 4:1	SHEET 1 of 1	REV AC4	