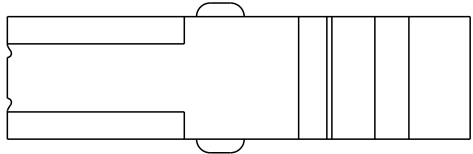
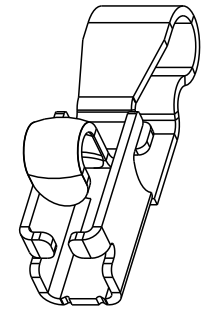
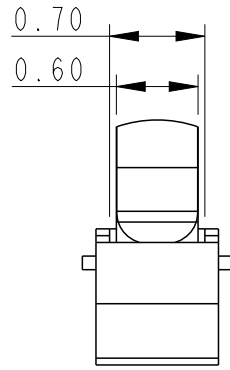
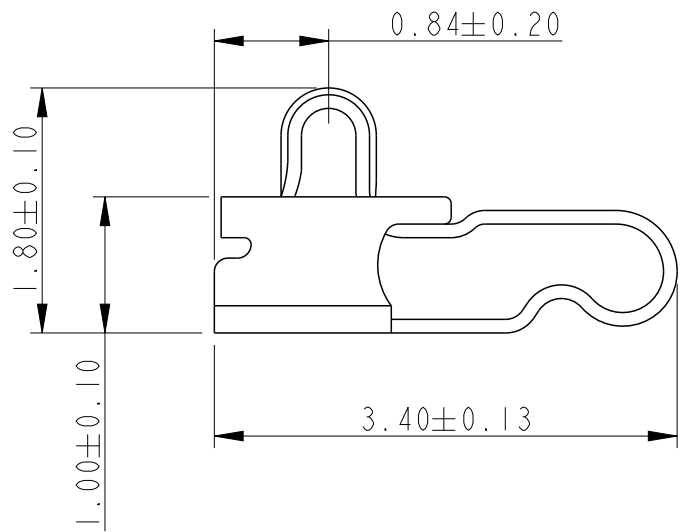


	PRODUCT NO.
FCI	10103955-001RLF 10103955-003RLF 10103955-009RLF



NOTES:
 1. MATERIAL: BERYLLIUM COPPER ALLOY
 2. CONTACT PLATING:
 CONTACT AREA: PLATING 1um Au over 1.0/3.0um Ni UNDERPLATE,
 or PLATING 0.05 to 0.15um Au over 1.0/3.0um Ni UNDERPLATE,
 or PLATING 1um GXT over 1.0/3.0um Ni UNDERPLATE.
 (1um GXT is 0.025~0.125um Au over 0.875um PdNi)
 SOLDER AREA: PLATING 0.05 TO 0.15um Au OVER 1.0/3.0 um Ni UNDERPLATE.
 3. PACKAGING: TAPE & REEL
 4. PART NUMBER DESCRIPTION:
 10103955-0 0 X X X

LF : LEAD FREE
 R : TAPE & REEL
 CONTACT PLATING:
 1 : 1um Au OVER Ni
 3 : 0.05 TO 0.15um Au OVER Ni
 9 : 1um GXT OVER Ni

rev	ecn no	dr	date
A	DG09-0229	NZ	2009-22-08
B	DG11-0048	SM	2011-02-22
C	ELX-DG-011025-1	ANDY	2012-03-23

spec ref	*	dr	Louis Ng	2009/10/06	projection	mm	size	A4	scale	18.000
tolerance std	ASME Y14.5	eng	Andy Lu	2012/03/23			ecn no		ELX-DG-011025-1	
TOLERANCES UNLESS OTHERWISE SPECIFIED		chr	Young Ou	2012/03/26			rel level		Released	
surface	linear	appr	Pei-Ming Zheng	2012/03/26	product family	-	dwg no		10103955	
ASME Y14.5	angular	www.fci.com		cat. no.	Product - Customer Drw		rev		C	
	0.X									
	0.XX									
	0.XXX									
	0°									



Copyright FCI.