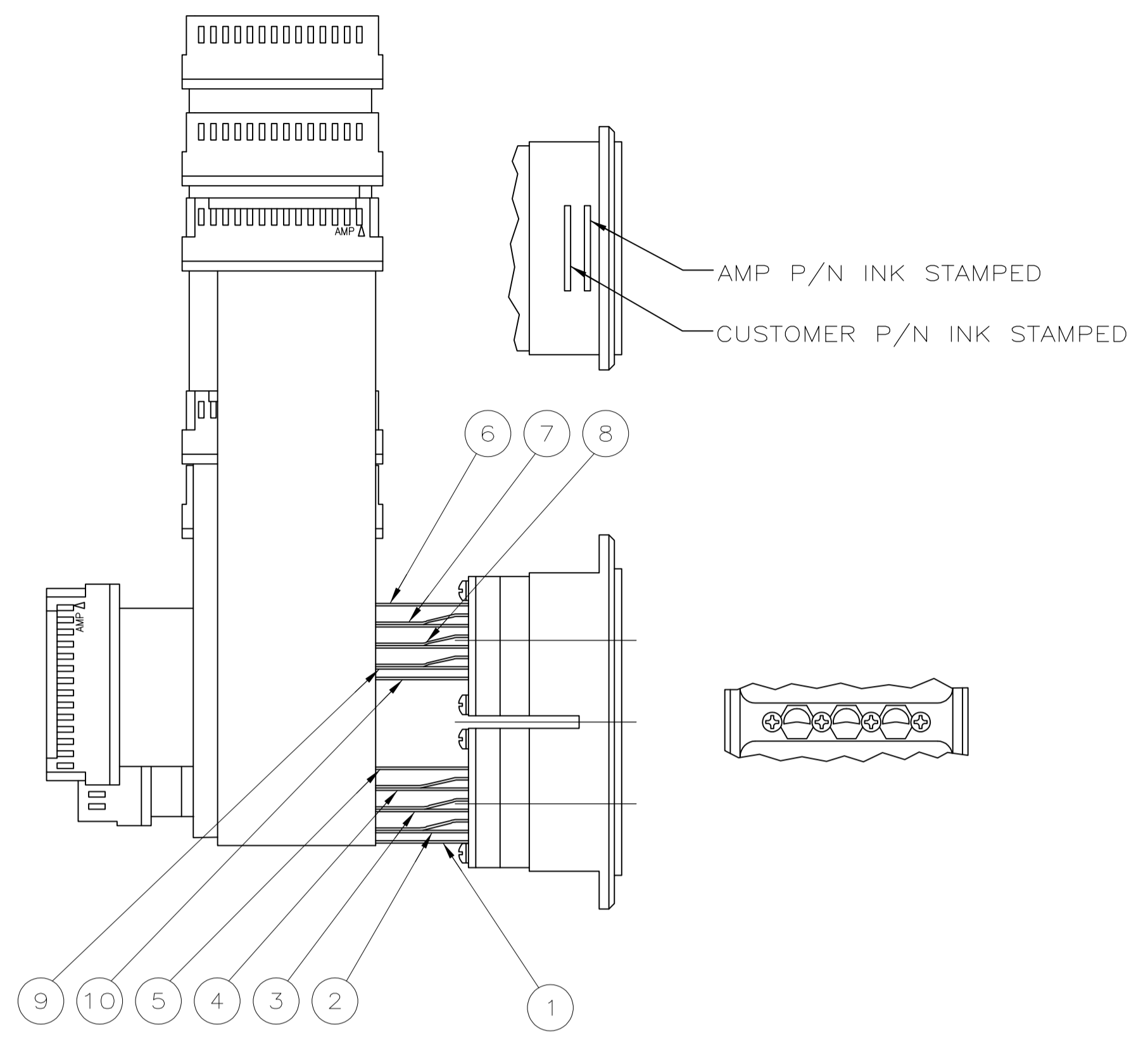
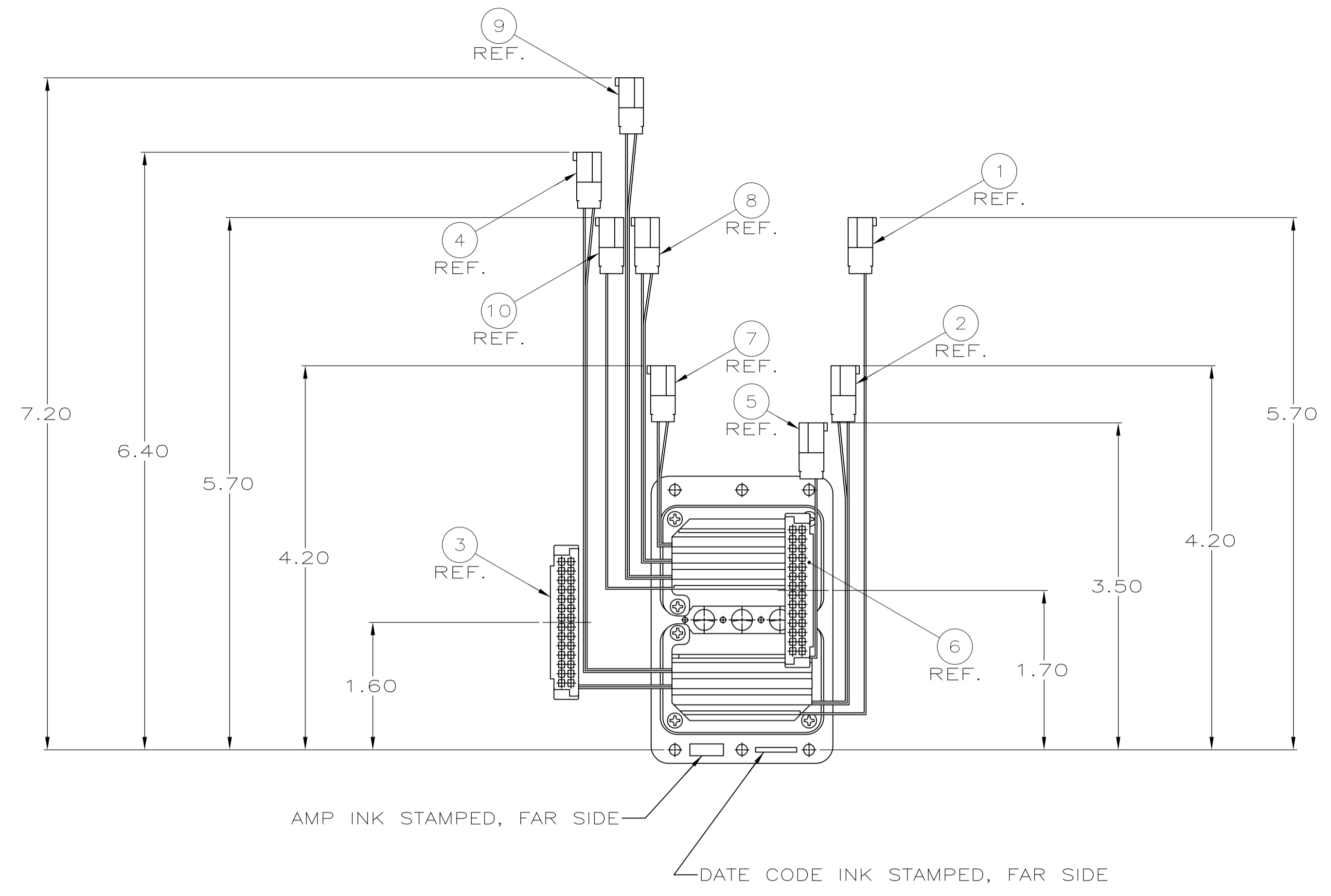


LOC		DIST		REVISIONS			
P	LTR	DESCRIPTION	DATE	DNW	APVD		
B	REV PER ECO	15-011840	11-20-15	CT	RG		



CABLE DESTINATION	TABLE
P1-94 THRU 106 TO A7P1-1 THRU -13	10
P1-80 THRU -93 TO A3P3-15 THRU -28	9
P1-67 THRU -79 TO A3P3-1 THRU -13	8
P1-53 THRU -66 TO A3P2-15 THRU -28	
P1-40 THRU -52 TO A3P2-1 THRU -13	7
P1-26 THRU -39 TO A3P1-15 THRU -28	
P1-13 THRU -25 TO A3P1-1 THRU -13	6
P1-1 THRU -12 TO A2P4-1 THRU -12	
P2-94 THRU -106 TO A5P1-1 THRU -13	5
P2-67 THRU -93 TO A7P2-1 THRU -27	4
P2-53 THRU -66 TO A6P2-28 THRU -15	3
P2-40 THRU -52 TO A6P2-13 THRU -1	
P2-26 THRU -39 TO A1P4-1 THRU -14	2
P2-13 THRU -25 TO A1P4-16 THRU -28	
P2-1 THRU -12 TO A2P2-1 THRU -12	1

CABLE DESTINATION TABLE

SHELL-MATL: ALUMINUM ALLOY PER QQ-A-591
FINISH: PLATED CADMIUM PER QQ-P-416, YELLOW CHROMATE
INSERT, 2 REQD.-MATL: EPOXY MLDG. CMPD.
COLOR: BLACK
RETAINER PLATE, 2 REQD.-MATL: ALUMINUM ALLOY
FINISH: BLUE ANODIZE PER MIL-A-8625
SCREW/WASHER, 8 REQD.-MATL: STAINLESS STEEL PER QQ-S-766
FINISH: PASSIVATED PER QQ-P-35B
KEYING INSERT, 3 REQD.- MATL: ALUMINUM ALLOY PER QQ-A-591
FINISH: PLATED CADMIUM PER QQ-P-416, YELLOW CHROMATE
SCREW, 4 REQD.- MATL: STAINLESS STEEL PER ASTM-A-582
FINISH: PASSIVATED PER QQ-P-35B
FLEXIBLE FLAT CONDUCTOR CABLE, 16 REQD.
MATL: POLYESTER
RECEPTACLE HOUSING, DOUBLE ROW, 10 REQD.-
MATL: GLASS FIBER REINF.,FLAME RTD. NYLON
COLOR: BLACK
CONTACT, RECEPTACLE, 212 REQD.-MATL: PHOSPHOR BRONZE PER QQ-B-750
FINISH: PLATED GOLD .000015 MIN.THK. PER MIL-G-45204 ON CONTACT AREA,
GOLD FLASH ON REMAINDER, ALL OVER NICKEL .000030 MIN. THK. PER QQ-N-290
RETAINER TAPE- MATL: GLASS FIBER REINF. POLYESTER
COLOR: BLACK
CONTACT, SOCKET ASSY, 212 REQD.
BODY-MATL: PHOSPHOR BRONZE PER QQ-B-750
FINISH: PLATED GOLD .000030 MIN. THK. PER MIL-G-45204 ON MATING END FOR
A LENGTH OF .300/.250, GOLD FLASH ON REMAINDER, ALL OVER NICKEL .000030
MIN. THK. PER QQ-N-290
SLEEVE-MATL: STAINLESS STEEL PER QQ-S-766
FINISH: PASSIVATED PER QQ-P-35B

- ① -2 WITHOUT CABLE ASSY. NO. 3.
- ② -3 WITHOUT CABLE ASSY. NO 4 & 10.
- 3. HOUSINGS AND CABLE ARE COMPONENTS RECOGNIZED BY UNDERWRITERS LABORATORIES INC.
- 4. KEYING IN POSITION 01.

SAME AS -2 EXCEPT: ①	213132-3
SAME AS -1 EXCEPT: ①	213132-2
AS SHOWN	213132-1
DESCRIPTION	PART NO.

THIS DRAWING IS A CONTROLLED DOCUMENT.

DIMENSIONS: INCHES	TOLERANCES UNLESS OTHERWISE SPECIFIED:	DIN S. GLATFELTER 1-28-85	DRW. NAME
0 PLC ± -	1 PLC ± -	CHK. F. HOFARD 1-28-85	APVD. E. HOFARD 1-28-85
2 PLC ± .25	3 PLC ± -	NAME	
4 PLC ± -	ANGLES ± -	PRODUCT SPEC	
MATERIAL SEE CALLOUTS	FINISH SEE CALLOUTS	APPLICATION SPEC	RESTRICTED TO
		WEIGHT	SIZE
		SCALE	CAGE CODE
		DRAWING NO.	DRAWING NO.
		213132	213132
		CUSTOMER DRAWING	SCALE NTS SHEET 1 OF 1 REV B

STE TE Connectivity

RECEPTACLE CONNECTOR ASSY, FFC