

MATERIAL :

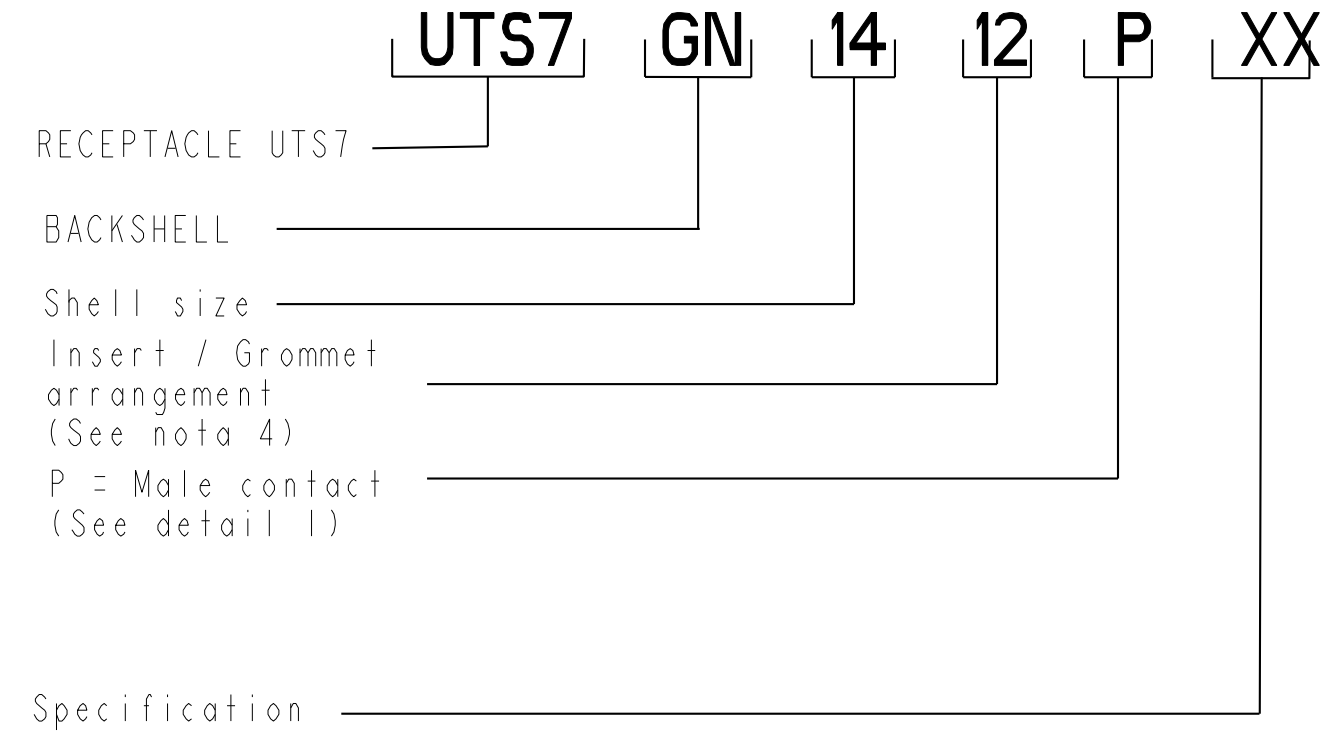
Shell:Polyamid UL94 V-0
Insert:Polyamid UL94 V-0
Seal gasket : Sealing IP68/69K : Silicone
O'ring:nitril
Nut:Aluminium alloy black anodized
Backshell body :Polyamid UL94 V-0
Backshell nut:Polyamid UL94 V-0
O'seal : Nitril

PERFORMANCE CHARACTERISTICS :



Operating temperature:-40°C up to 105°C
Insulation resistance:5000 MΩmin
Test potential:2000 Vrms for #16 layout and 1500Vrms for #20 layout
Corrosion salt spray:500 hours
Durability:250 matings and unmatings
Sealing in mated conditions:
-IP68 1 bar during 1 week : immersion under 10 m of water. (IEC 60529)
-IP69K : exposure to high pressure water of cleaning equipment(DIN 40050)

NOTES :

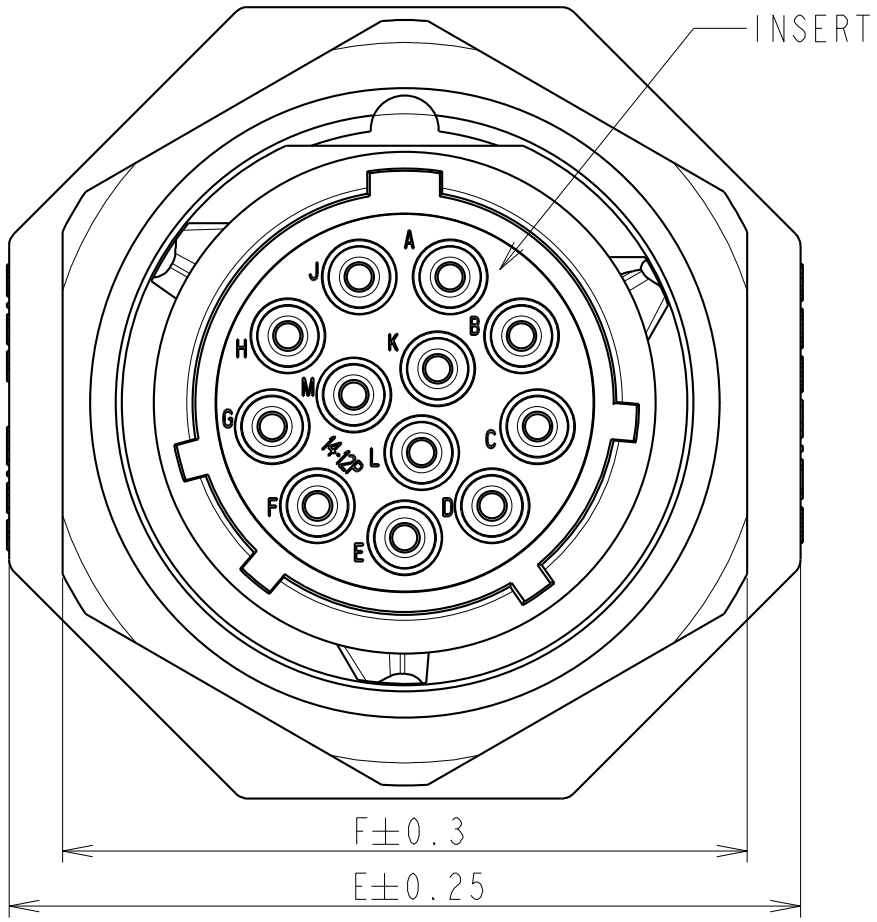
- 1-Receptacle, backshell and the reducing seal are delivered as a kit
The backshell already includes the standard seal.
- 2-Contact to be ordered separately :refer to TRIM TRIO catalog
- 3-Colored ring to be orderd separately refer to customer drawing C006-UTSI-A
- 4-developed Grommet arrangements : refer to C042-UTSI-A
- 5- for wirering instructions, refer to BT214



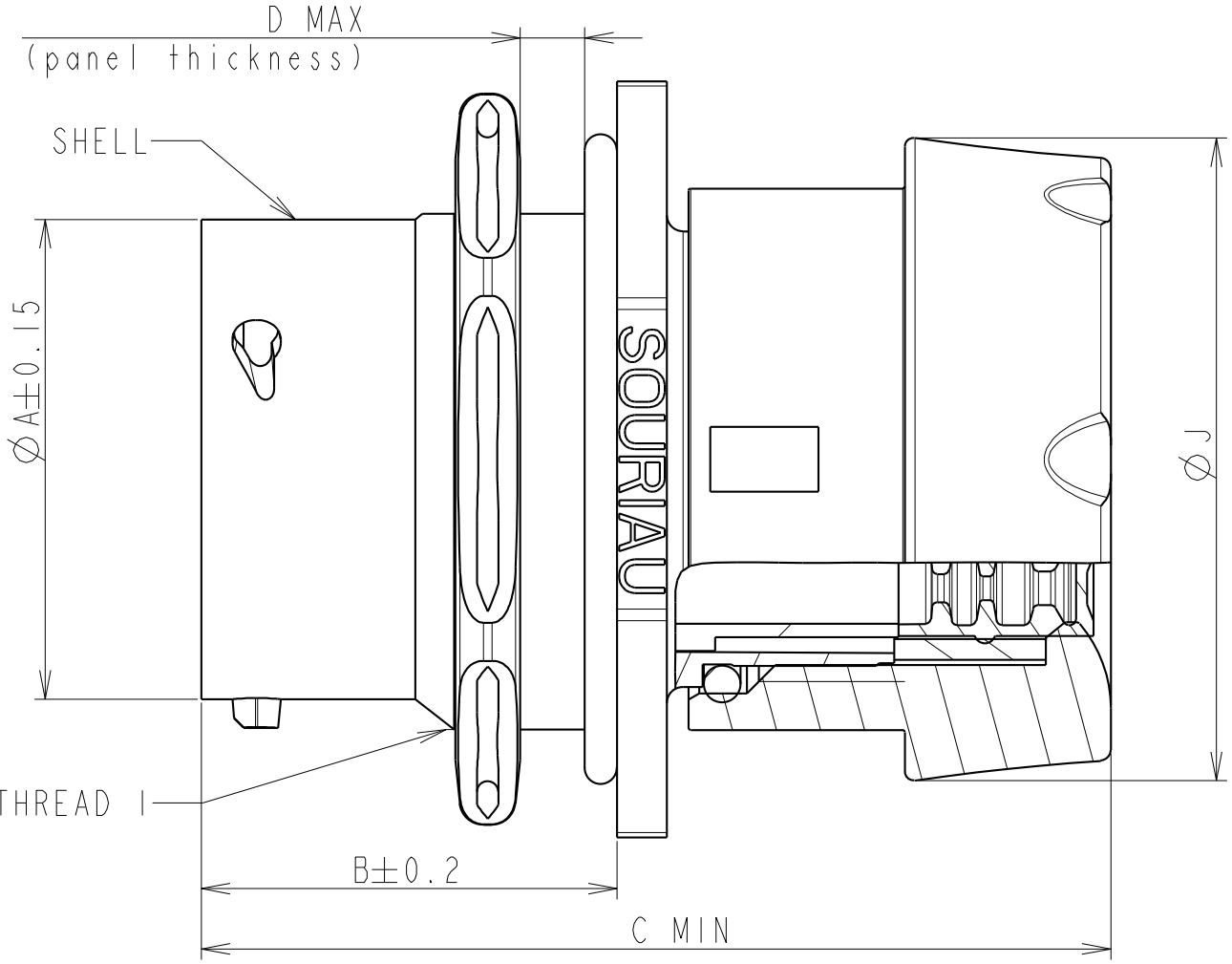
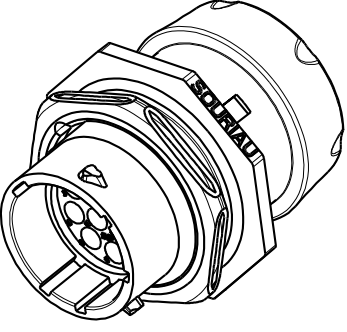
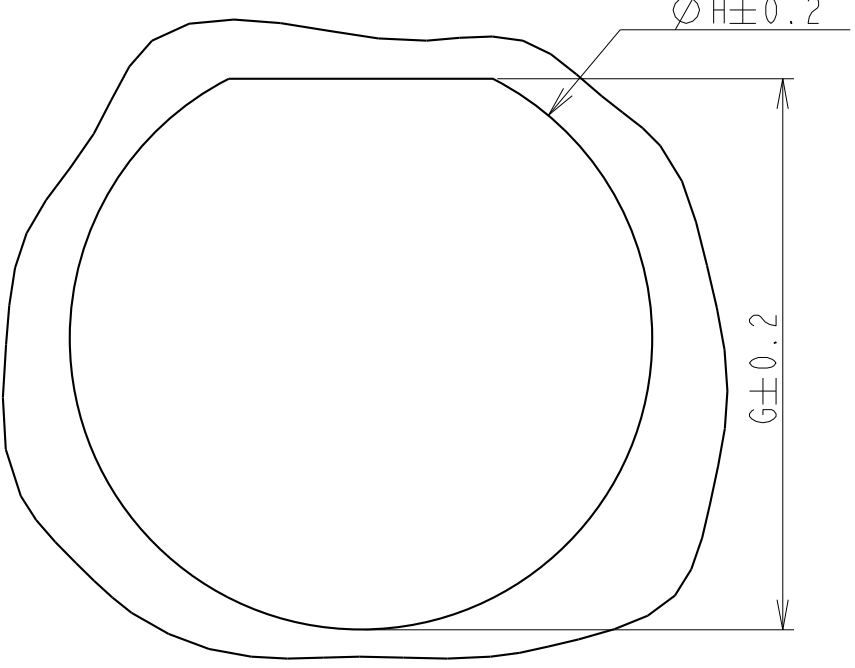
CUSTOMER DRAWING

c		05/02/08	--	Add shell size 14 and 12	--
ISS	DATE		Latest modification - by:		RAGAINÉ M.
Designed by:			Date: 31/05/07		CUSTOMER DRAWING
TITLE		JAM NUT RECEPTACLE + BACKSHELL NUT UTS CONNECTOR			
Scale				General linear Tolerances: ±0.1	
2/1				NPRDS / PROJECT UTSI	
		WWW.SOURIAU.COM			This document is the property of SOURIAU It must not be reproduced or communicated without permission
FORMAT		SOURIAU DRG N°			SHEET
A2		CO25-UTSI-A			NOT EXPORT CONTROLLED

MATING FACE



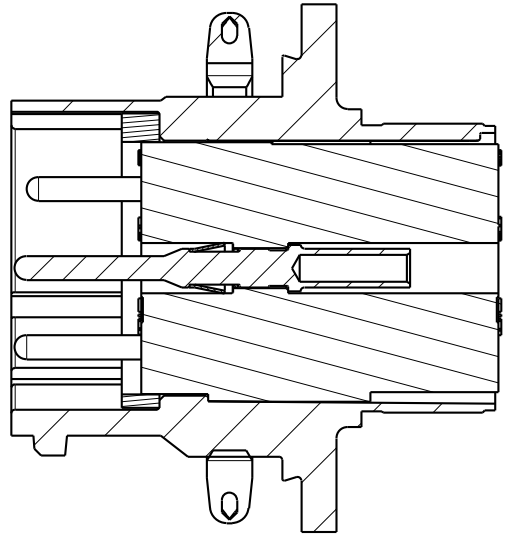
CUT PANEL



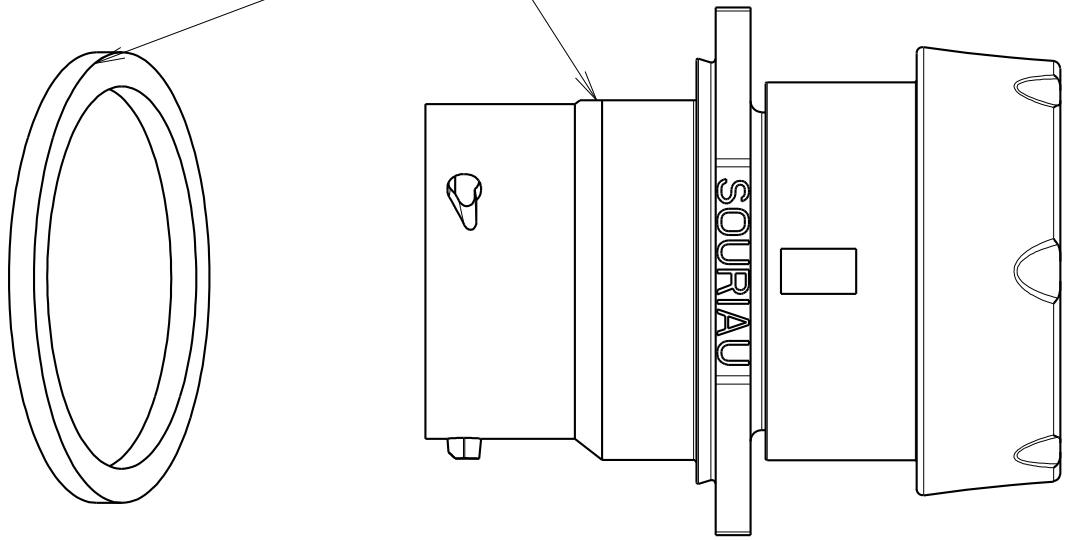
COUPE A-A
ECHELLE 3/1

SHELL SIZE	LAYOUT	THREAD I	Ø A±0.15	B±0.2	C MIN.	D MAX.	E±0.25	F±0.3	G±0.20	Ø H±0.2	Ø J±0.2
14	See note 4	1"20 UNEF CLASS 2A	22.20	19.30	43	3.20	34.90	30.20	24.30	25.70	29.8
12	See note 4	7/8 20 UNEF CLASS 2A	19	19.3	40.75	3.20	31.80	27.00	21.20	22.50	25.4
10	See note 4	11/16 24 UNEF CLASS 2A	14.9	19.3	41	3.20	27.00	22.2	16.5	17.70	22

MALE CONNECTOR
(detail 1)



COLORED RING
(see nota 3)



ECHELLE 2/1