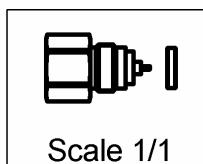
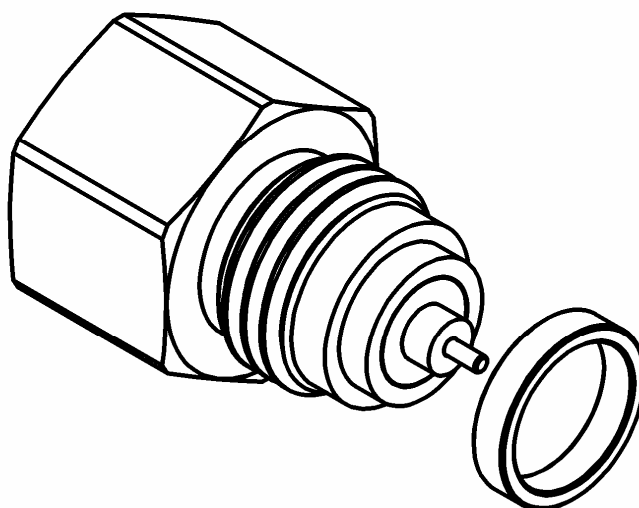
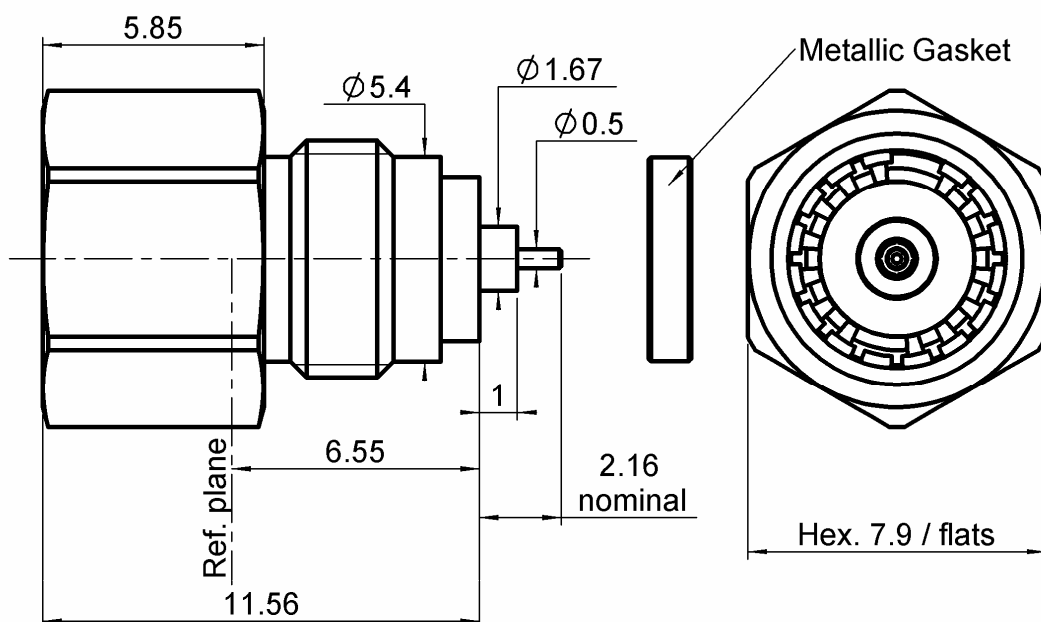


SCREW ON FEMALE RECEPTACLE

R128.609.701

HERMETIC

Series : **BMA**



All dimensions are in mm.



COMPONENTS	MATERIALS	PLATING (μm)
BODY	STAINLESS STEEL	PASSIVATION
CENTER CONTACT	BERYLLIUM COPPER	GOLD 1.3 OVER NICKEL2
OUTER CONTACT	BERYLLIUM COPPER	NPGR
INSULATOR	PTFE+GLASS BEAD	
GASKET	-	
OTHERS PARTS	DILVER P1	GOLD 1.3 OVER NICKEL 2
-	-	-
-	-	-

Issue : 0941 B

In the effort to improve our products, we reserve the right to make changes judged to be necessary.

RADIAL 

SCREW ON FEMALE RECEPTACLE**R128.609.701****HERMETIC**Series : **BMA****PACKAGING**

Standard	Unit	Other
100	'W' option	Contact us

SPECIFICATION**ELECTRICAL CHARACTERISTICS**

Impedance	50	Ω
Frequency	0-22	GHz
VSWR	1.25* + 0,0000	x F(GHz) Maxi
Insertion loss	0.07	$\sqrt{F}(\text{GHz})$ dB Maxi
RF leakage	- (80)	- F(GHz)) dB Maxi
Voltage rating	500	Veff Maxi
Dielectric withstanding voltage	1500	Veff mini
Insulation resistance	5000	M Ω mini

ENVIRONMENTAL

Operating temperature	-65/+165	$^{\circ}\text{C}$
Hermetic seal	10-6	Atm.cm ³ /s
Panel leakage	NA	

OTHER CHARACTERISTICS

Assembly instruction

Others :
*0-10 GHz**MECHANICAL CHARACTERISTICS**

Center contact retention	
Axial force – Mating end	27 N mini
Axial force – Opposite end	27 N mini
Torque	NA N.cm mini
Recommended torque	
Mating	NA N.cm
Panel nut	NA N.cm
Mating life	1000 Cycles mini
Weight	2,2000 g

Issue : 0941 B

In the effort to improve our products, we reserve the right to make changes judged to be necessary.

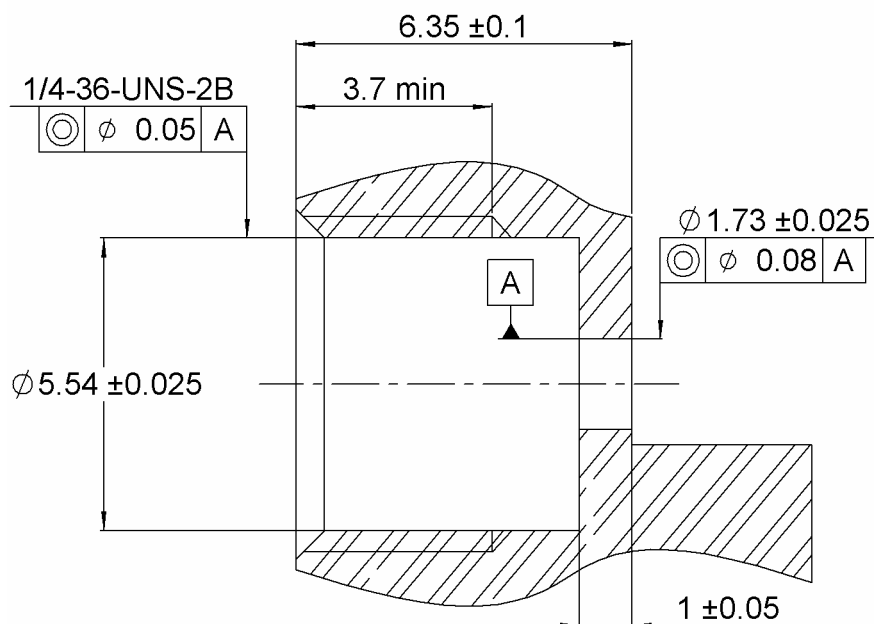
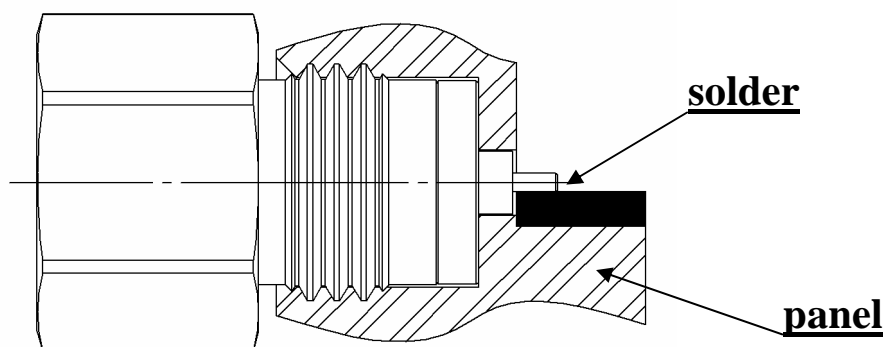
RADIAL 

SCREW ON FEMALE RECEPTACLE

R128.609.701

HERMETIC

Series : BMA

PANEL DRILLING**MOUNTING**

Assemble metal gasket onto connector. Screw the whole into the housing. Tighten the connector up to 220Ncm+or-10Ncm(use special tooling set RADIAL R282.341.000)Thus the connexion hermeticity is guaranteed at 10-8cc/sec.

Then solder the pin on the track.

Beware there is not too much solder.

Issue : 0941 B

In the effort to improve our products, we reserve the right to make changes judged to be necessary.

RADIAL 