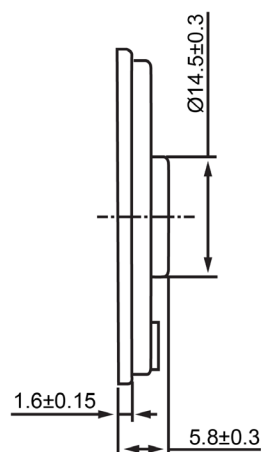
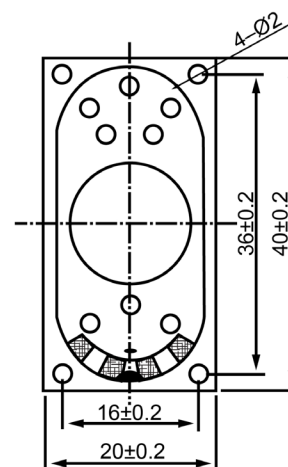


SIDE VIEW



BOTTOM VIEW



## Specifications

| Description           | Value        | Unit  |
|-----------------------|--------------|-------|
| Shape                 | Rectangle    |       |
| Resonant Frequency    | 450          | (Hz)  |
| Frequency Range       | 450 ~ 20,000 | (Hz)  |
| SPL @ 10cm            | 89           | (dBA) |
| Impedance             | 8            | (Ohm) |
| Cone Material         | Cloth        |       |
| Nominal Power         | 1            | (W)   |
| Max Power             | 2            | (W)   |
| Mount Type            | Frame Mount  |       |
| Operating Temperature | - 40 ~ + 70  | °C    |
| Storage Temperature   | - 40 ~ + 80  | °C    |
| Weight                | 7.6          | (g)   |

## Notes

- 1) All dimensions are in mm unless otherwise noted
- 2) All parts meet RoHS



DB UNLIMITED

Dynamic Speaker

## Revision History

| Version  | Description               |            |            | Date        | Approved |
|----------|---------------------------|------------|------------|-------------|----------|
| 1        | Released from Engineering |            |            | 2/5/2014    | J.S      |
|          |                           |            |            |             |          |
|          |                           |            |            |             |          |
|          |                           |            |            |             |          |
|          |                           |            |            |             |          |
|          |                           |            |            |             |          |
|          |                           |            |            |             |          |
|          |                           |            |            |             |          |
|          |                           |            |            |             |          |
| Drawn by | Date                      | Checked by | Date       | Approved by | Date     |
| G.W.     | 10/31/2013                | C.E.       | 10/21/2013 | J.S         | 2/5/2014 |

SC400408-1