

CATALOG LISTING

2D64

PAGE 1 OF 1

REPLACES

ISSUE

7

CHECK

REVISIONS

A

CO-

82939

TSM

4 APR 96

B

CO-

82962

TSM

9 APR 96

C

CO84186

J A F

13 MAY 97

D

CO-

93788

J J A

9 DEC 98

CHECK

4 APR 96

M A M

CHECK

4 APR 96

DDM/CAD

DRAWN

T S M

MICRO SWITCH
a Honeywell Division

FED. MFG. CODE 91929

SWITCH-BASIC

CATALOG LISTING

2D64

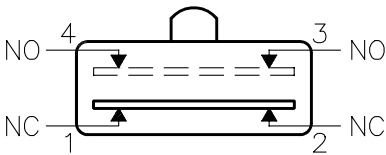
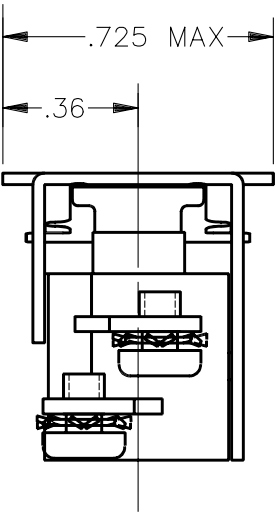
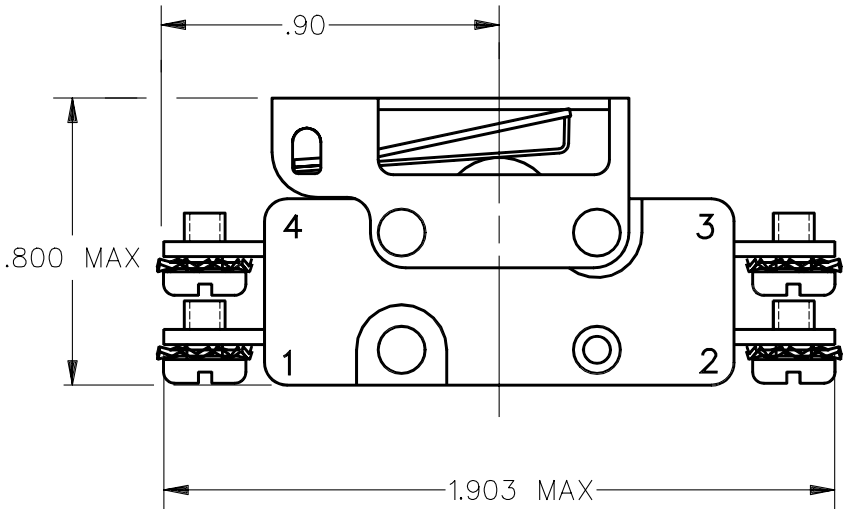
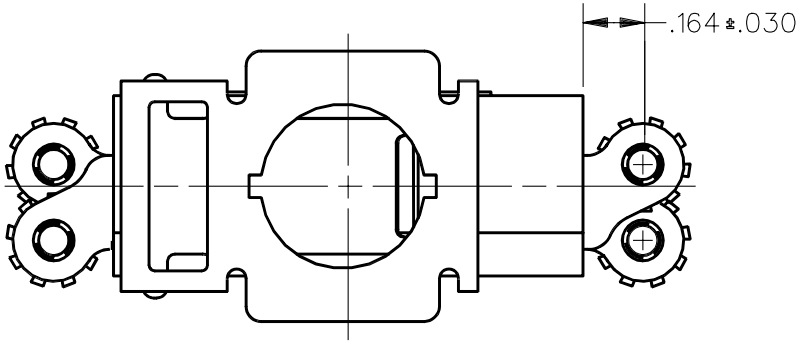
FAA-PMA

THIS DRAWING COVERS A PROPRIETARY ITEM AND IS THE PROPERTY OF MICRO SWITCH. A DIVISION OF HONEYWELL. THIS DRAWING IS NOT TO BE COPIED OR USED WITHOUT THE APPROVAL OF MICRO SWITCH

SPECIFICATION DETAILS:

FOR END CUSTOMER USE

STANDARD:	NO MILITARY QUALIFICATION
CONSTRUCTION:	FOR USE WITH SERIES 2 OPERATORS
ENCLOSURE	UNSEALED
MOUNTING OF OPERATOR	PARALLEL OR NORMAL TO MAJOR AXIS
CIRCUIT CONFIGURATION 1TB22-1	TWO CIRCUIT-DOUBLE BREAK
CONTACT MATERIAL	FINE SILVER
CASE	PHENOLIC
PLUNGER	THERMOPLASTIC
MODULE ACTION	MOMENTARY
TERMINATION	
BRASS TERMINALS	60/40 TIN/LEAD PLATED
PHOSPHOR BRONZE WASHERS	ZINC COBALT PLATED W/CHROMATE FINISH
#4-48 UNF SCREWS	ZINC COBALT PLATED W/CHROMATE FINISH
EXPOSED METALS	STAINLESS STEEL
ELECTRICAL RATINGS:	30VDC-10 AMP
	125- 250 VAC-10 AMP
	1/2HP-125 VAC
DIELECTRIC STRENGTH	
BETWEEN ISOLATED POINTS	1000 VOLTS RMS
CHARACTERISTICS:	
MECHANICAL LIFE	50,000 OPERATIONS
ELECTRICAL LIFE	50,000 OPERATIONS
TEMPERATURE RANGE	-40°C TO +79.4°C
OPERATING POINT	.171 MAX FROM ASSEMBLY REFERENCE PLANE
OPERATING FORCE	20 OZ MAX
RELEASE POINT	.112 MIN FROM ASSEMBLY REFERENCE PLANE
RELEASE FORCE	4.0 OZ MIN



CIRCUIT DIAGRAM

THIRD ANGLE PROJECTION

SCALE

2 : 1

DO NOT SCALE PRINT

UNLESS OTHERWISE SPECIFIED TOLERANCES ARE

ONE PLACE (.0) ±.030

TWO PLACE (.00) ±.015

THREE PLACE (.000) ±.005

ANGLES ±

WEIGHT

.08 OZ

ANSI Y14.5M-1982 APPLIES

Mouser Electronics

Authorized Distributor

Click to View Pricing, Inventory, Delivery & Lifecycle Information:

[Honeywell:](#)

[2D64](#)