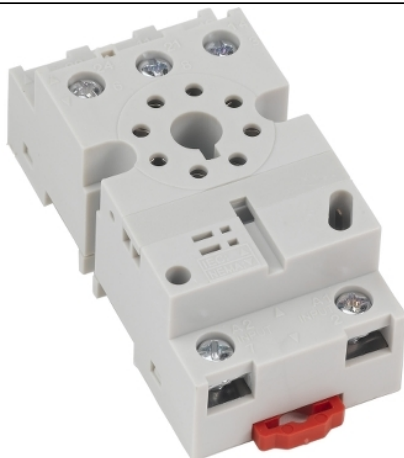




Product availability: Stock - Normally stocked in distribution facility



Main

Product range	8501N
Product type	Relay Socket
Pin shape	Tubular
Number of pins	8
[In] rated current	5 A 600 V AC 16 A 300 V AC

Complementary

Electrical connection	Double tiered screw clamp terminals
Mounting type	DIN rail Panel
Package quantity	Set of 10

Environment

Certifications	UL recognized CSA RoHS CE
Height	3.05 in (77.5 mm)
Width	1.42 in (36 mm)
Depth	1.42 in (36 mm)

Ordering and shipping details

Category	21142 - 8501 N
Discount Schedule	CP2
GTIN	00785901006053
Package weight(Lbs)	0.06 kg (0.13 lb(US))
Returnability	Yes
Country of origin	TW

Offer Sustainability

Sustainable offer status	Green Premium product
REACH Regulation	REACH Declaration
REACH free of SVHC	Yes
EU RoHS Directive	Pro-active compliance (Product out of EU RoHS legal scope) EU RoHS Declaration
Toxic heavy metal free	Yes
Mercury free	Yes
RoHS exemption information	Yes
China RoHS Regulation	China RoHS Declaration

Environmental Disclosure	Product Environmental Profile
Circularity Profile	No need of specific recycling operations

Contractual warranty

Warranty	18 months
----------	-----------
