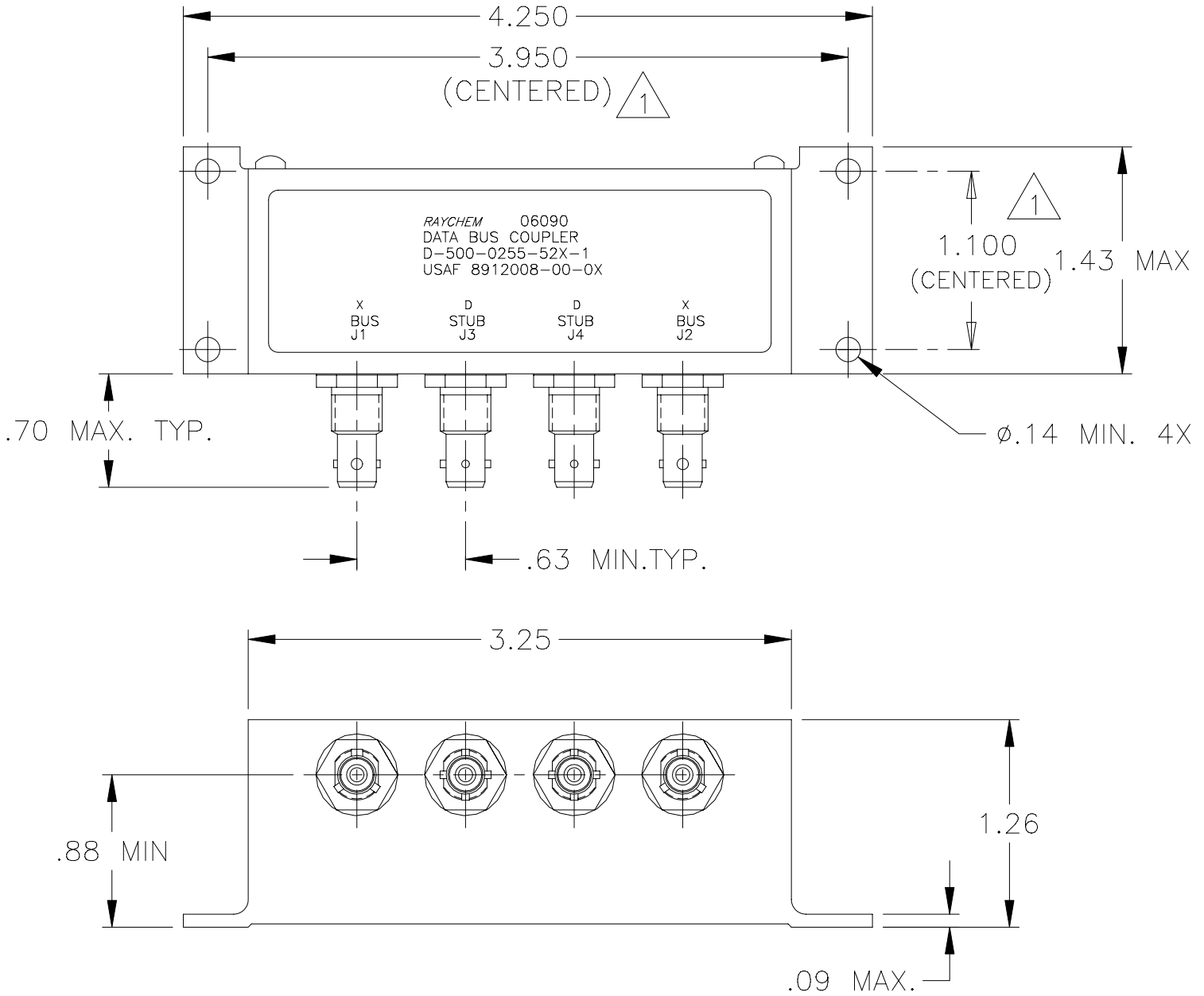


| REVISIONS | | | |
|-----------|--------------------------|---------|----------|
| LTR | DESCRIPTION | DATE | APPROVED |
| D | REVISED PER ECN# T-20325 | 95JUL31 | Z. TEMAN |
| E | REVISED PER ECN# T-21079 | 96OCT18 | Z. TEMAN |

NOTES:

1 HOLE PATTERN MACHINED SYMMETRIC TO MOUNTING FLANGE.



If this document is printed it becomes uncontrolled.
Check for the latest revision.

SPECIFICATION CONTROL DRAWING

| | | | | | |
|---|---|--|--|---------------------------|-------|
| UNLESS OTHERWISE SPECIFIED DIMENSIONS ARE IN INCHES. METRIC DIMENSIONS ARE IN BRACKETS. DECIMALS .XXX ±.010 [— mm] .XX ±.03 [— mm] ANGLES .X — ± — WEIGHT: [138g MAX] | DRAWN J.B.K. 91 MAR 15 | | Tyco Electronics Corporation 300 Constitution Drive Menlo Park, CA. 94025 U.S.A. | | |
| | CHECKED | | | | |
| | APPROVED | | TITLE | | |
| | APPROVED Z.TEMAN 91 MAR 22 CAD NAME 009046-1.DWG | 2 STUB DATA BUS BAYONET COUPLER WITH TRIAXIAL CONNECTORS | | | |
| THIRD ANGLE PROJECTION | | SIZE A | CODE IDENT. NO. 06090 | DWG. NO. D-500-0255-52X-1 | REV E |
| DO NOT SCALE THIS DRAWING | | | SHEET 1 OF 2 | | |

1.0 INTERMATEABILITY

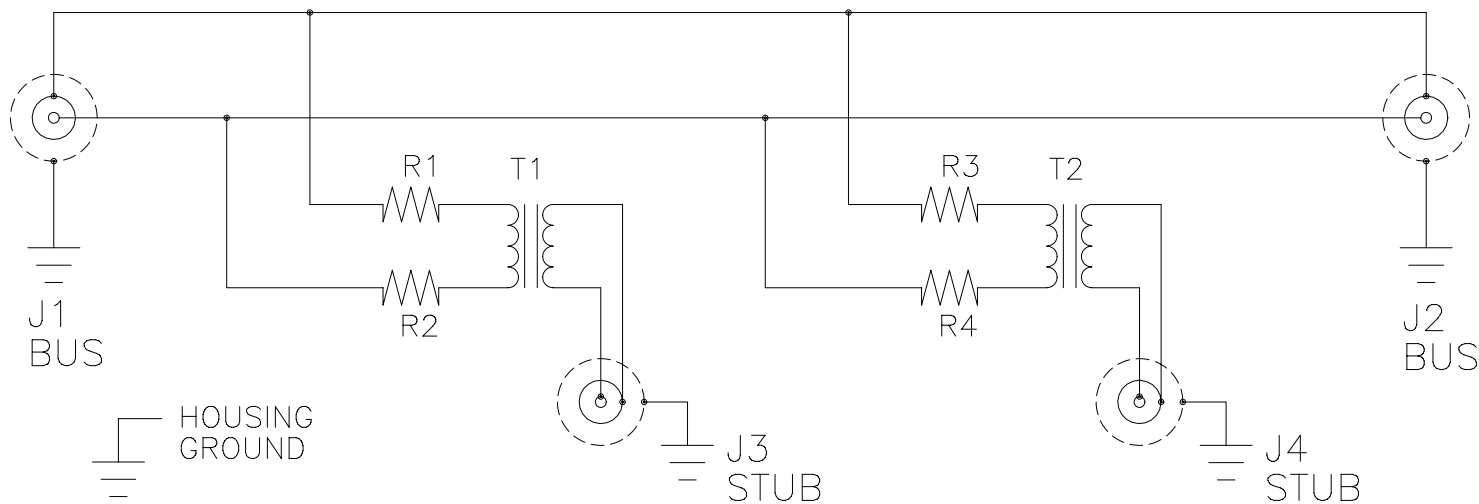
| CONNECTOR BOX JACK | MATING PLUG | KEY |
|-----------------------------------|-----------------------------------|-----|
| DK-621-0434-1S (8912004-00-05) | DK-621-0433-1P (8912003-00-01) | A |
| DK-621-0436-2S (8912004-00-06) | DK-621-0435-2P (8912003-00-02) | B |
| DK-621-0438-3S (8912004-00-07) | DK-621-0437-3P (8912003-00-03) | C |
| DK-621-0440-4P (8912004-00-04) | DK-621-0439-4S (8912003-00-08) | D |

2.0 PERFORMANCE

- 2.1 THIS COUPLER IS DESIGNED TO MEET THE APPLICABLE FUNCTIONAL REQUIREMENT OF RAYCHEM SPECIFICATION D-6021 AND USAF 8912008.
- 2.2 THE COUPLER SHALL OPERATE UNDER ANY OF THE ENVIRONMENTAL SERVICE CONDITIONS AS SPECIFIED IN MIL-E-5400, CLASS ∇ UPGRADED TO 125°C CONTINUOUS OPERATION.
- 2.3 ALTITUDE: SEA LEVEL TO 75,000 FEET
- 3.0

| D-500-0255 | BUS JACKS J1 AND J2 | STUB JACKS J3 AND J4 |
|---------------------------|---------------------------------------|---------------------------------------|
| -523-1 (8912008-00-04) | DK-621-0434-1S "A" (8912004-00-05) | DK-621-0440-4P "D" (8912004-00-04) |
| -525-1 (8912008-00-05) | DK-621-0436-2S "B" (8912004-00-06) | DK-621-0440-4P "D" (8912004-00-04) |
| -527-1 (8912008-00-06) | DK-621-0438-3S "C" (8912004-00-07) | DK-621-0440-4P "D" (8912004-00-04) |

SCHEMATIC DIAGRAM



If this document is printed it becomes uncontrolled.
Check for the latest revision.

CAD NAME: 009046-2

DRAWN

J.B.K.

91 MAR 15

SIZE

A

CODE IDENT. NO.

06090

DWG. NO.

D-500-0255-52X-1

REV

E

DO NOT SCALE THIS DRAWING

SHEET 2 OF 2