

**PLEASE CHECK WWW.MOLEX.COM FOR LATEST PART INFORMATION**

**Part Number:** [0877159920](#)

**Status:** **Active**

**Overview:**

**Description:** 1.00mm (.039") Pitch, Edge Card Connector, 200 Circuits, Nylon 4/6 Glass-filled, Black Housing, Phosphor Bronze, 0.76µm (30µ") Gold (Au) Plating, with Plastic Pegs, 2.54mm (.100") Solder tail, Lead Free

**Agency Certification**

CSA LR19980

**General**

Product Family Edge Card Connectors  
Series 87715  
Component Type Edgecard to PCB  
Overview edge\_card\_connectors  
Product Name Edge Card

**Physical**

Circuits (Loaded) 200  
Circuits (maximum) 200  
Circuits Detail All Signal  
Durability (mating cycles max) 50  
Entry Angle Vertical (Top Entry)  
Flammability 94V-0  
Keying to Mating Part Yes  
Material - Plating Mating Gold  
Material - Plating Termination Tin  
PC Tail Length (in) 0.100 In  
PC Tail Length (mm) 2.54 mm  
PCB Locator Yes  
PCB Retention Yes  
PCB Thickness Recommended (in) 0.062 In  
PCB Thickness Recommended (mm) 1.60 mm  
Packaging Type Tray  
Pitch - Mating Interface (in) 0.039 In  
Pitch - Mating Interface (mm) 1.00 mm  
Pitch - Term. Interface (in) 0.039 In  
Pitch - Term. Interface (mm) 1.00 mm  
Plating min: Mating (µin) 30  
Plating min: Mating (µm) 0.76  
Polarized to Mating Part Yes  
Temperature Range - Operating -55°C to +85°C  
Termination Interface: Style Through Hole

**Electrical**

Current - Maximum per Contact 1.1A  
Voltage - Maximum 50V AC (RMS)/DC

**Solder Process Data**

Lead-free Process Capability Wave Capable (TH only)  
Process Temperature max. C 260

**Material Info**

**Reference - Drawing Numbers**

Packaging Specification PK-87715-212  
Product Specification PS-87715-200

**EU RoHS**

**ELV and RoHS  
Compliant**

**REACH SVHC**

Not Reviewed

**Halogen-Free**

**Status**

**Not Halogen-Free**

**China RoHS**



**Need more information on product  
environmental compliance?**

Email [productcompliance@molex.com](mailto:productcompliance@molex.com)  
For a multiple part number RoHS Certificate of  
Compliance, [click here](#)

Please visit the [Contact Us](#) section for any  
non-product compliance questions.

**Search Parts in this Series**

87715Series

**Mates With**

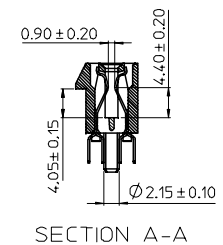
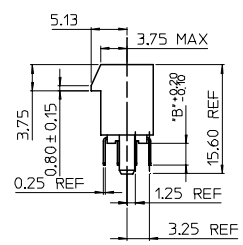
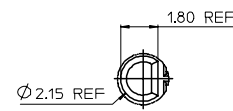
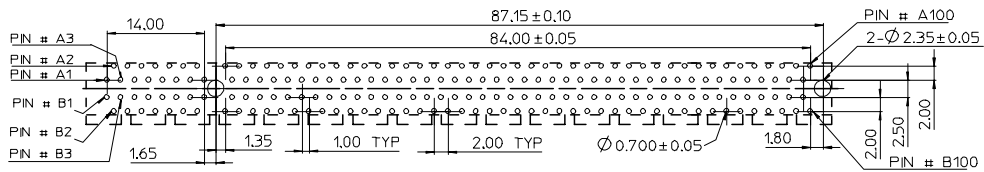
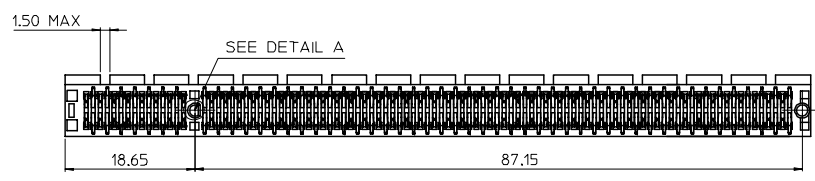
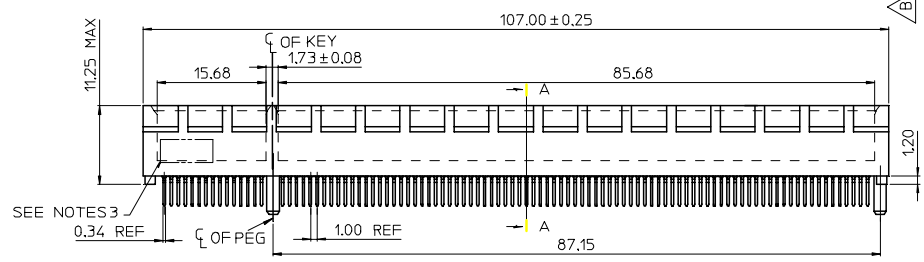
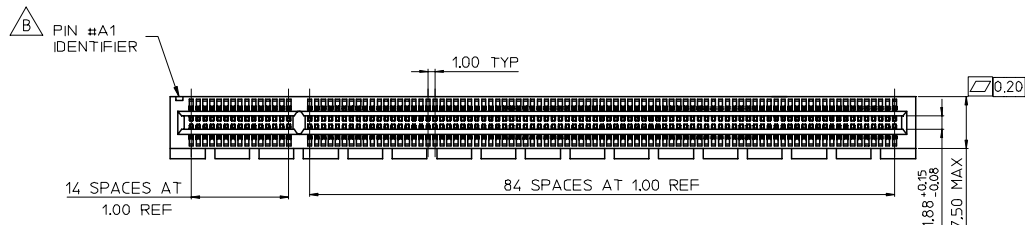
1.0mm Thick Memory Module

This document was generated on 06/04/2010

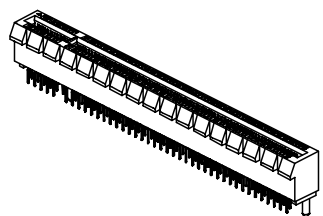
**PLEASE CHECK [WWW.MOLEX.COM](http://WWW.MOLEX.COM) FOR LATEST PART INFORMATION**

7 6 5 4 3 2 1

MOLEX P/N	CIRCUIT SIZE	HOUSING MATERIAL	HOUSING COLOR	TERMINAL MATERIAL	CONTACT PLATING	SOLDERTAIL PLATING	DIM 'B'
87715-9920	200	NYLON46	BLACK	PHOSPHOR BRONZE	GOLD 30 MICROINCH	100 MICRONCH TN OVER NICKEL OVERALL	2.54
87715-9921							3.00

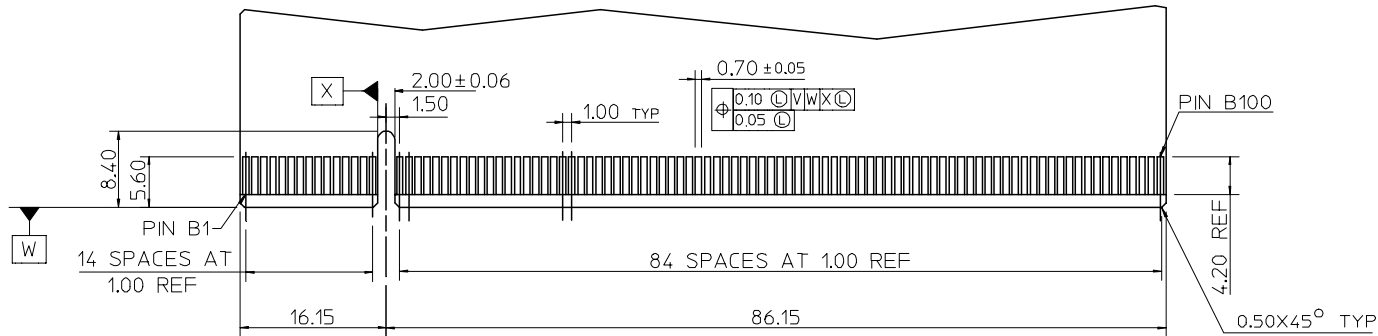


- NOTES:**
- MATERIALS:
    - 1-1.HOUSING:SEE TABLE, GLASS FIBER FILLED, UL94V-0, COLOR:SEE TABLE
    - 1-2.CONTACT:SEE TABLE
  - PLATING:
    - 2-1.CONTACT AREA:SEE TABLE
    - 2-2.SOLDER TAIL:SEE TABLE
    - 2-3.UNDER PLATING:SEE TABLE
  - DATE CODE:TO BE PRINTED
  - PRODUCT SPECIFICATION REFER TO PS-87715-200
  - PACKAGING SPECIFICATION REFER TO PK-87715-212
  - TEST SUMMARY:REFER TO TS-87715-212
  - LEAD-FREE AND ROHS COMPLIANT PRODUCT

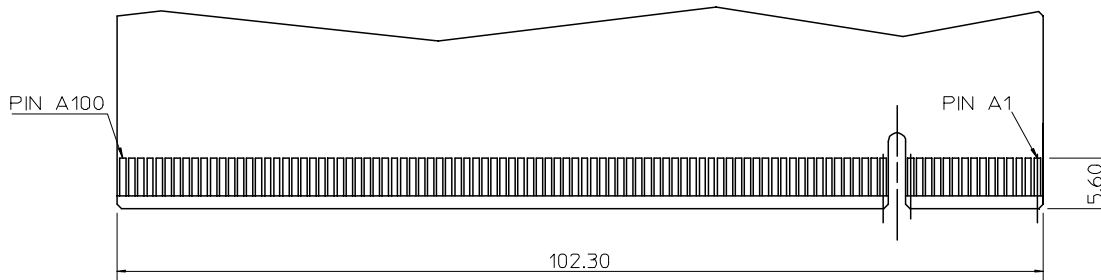


DRAWING ERROR EC NO: SH2007-0602 DRWN:ALL IN 2007/02/14 CHKD: 2007/02/14 APPR:WWSCHANG 2007/02/14	QUALITY SYMBOLS ▽=0 ◻=0	GENERAL TOLERANCES (UNLESS SPECIFIED)		DIMENSION STYLE MM ONLY		SCALE	DESIGN UNITS	THIRD ANGLE PROJECTION
			mm	INCH		METRIC		
REV	DESCRIPTION	4 PLACES	± ---	± ---	DRAWN BY	DATE	TITLE	
		3 PLACES	± ---	± ---	TOM	2005/03/13	1.00 PITCH EDGE CARD 200 PIN VERT DIP CONN	
		2 PLACES	± 0.25	± ---	CHECKED BY	DATE	MATERIAL NO.	
		1 PLACE	± 0.25	± ---	ALLEN LIN	2005/03/13	DOCUMENT NO.	
		ANGULAR ± 3 °		APPROVED BY		DATE	SHEET NO.	
		DRAFT WHERE APPLICABLE MUST REMAIN WITHIN DIMENSIONS		WILSON CHANG		2005/03/13	SD-87715-212	
				SEE TABLE				1 OF 2
				SIZE		THIS DRAWING CONTAINS INFORMATION THAT IS PROPRIETARY TO MOLEX INCORPORATED AND SHOULD NOT BE USED WITHOUT WRITTEN PERMISSION		

6 5 4 3 2 1



← I/O PANEL DIRECTION  
 △ PRIMARY (COMPONENT) SIDE



I/O PANEL → DIRECTION  
 SECONDARY (SOLDER) SIDE

NOTES :

△ CHAMFER EDGES MUST BE FREE OF CUTTING BURRS.

SEE SHEET 1 EC NO: SH2007-0602 DRWN: ALL IN CHKD: APPR: WWSCHANG	DESCRIPTION 2007/02/14 2007/02/14 2007/02/14	QUALITY SYMBOLS	GENERAL TOLERANCES (UNLESS SPECIFIED)		DIMENSION STYLE MM ONLY		SCALE 1:1	DESIGN UNITS METRIC	THIRD ANGLE PROJECTION		
		$\nabla = 0$ $\triangle = 0$	mm	INCH	DRAWN BY TOM	DATE 2005/03/13	TITLE △ 1.00 PITCH EDGE CARD 200 PIN VERT DIP CONN				
			4 PLACES ± ---	± ---	CHECKED BY ALLEN LIN	DATE 2005/03/13	MOLEX INCORPORATED				
			3 PLACES ± ---	± ---	APPROVED BY WILSON CHANG	DATE 2005/03/13					
			2 PLACES ± 0.25	± ---	MATERIAL NO. SEE TABLE		DOCUMENT NO. SD-87715-212	SHEET NO. 2 OF 2			
	1 PLACE ± 0.25	± ---	DRAFT WHERE APPLICABLE MUST REMAIN WITHIN DIMENSIONS		THIS DRAWING CONTAINS INFORMATION THAT IS PROPRIETARY TO MOLEX INCORPORATED AND SHOULD NOT BE USED WITHOUT WRITTEN PERMISSION						