



ETA-USA

HIGH QUALITY SWITCHING POWER SUPPLIES

AC/DC SWITCHING POWER SUPPLY
24 WATTS
AC INPUT 90-264 VAC
SINGLE OUTPUT
CEC V

DTA24-SX-W-C2-II



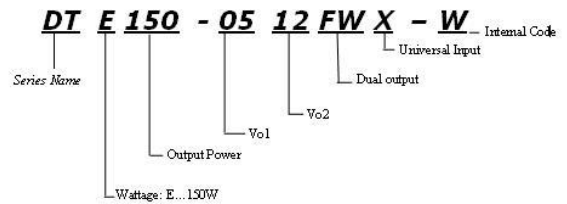
Dimension : L80.0mm×W50.0×H35.0mm



Input

Input Voltage	90-264VAC
Range:	
Frequency:	47-63Hz
Input	
Current (RMS) :	0.7A max.@ 90VAC 0.35A max.@ 264VAC
Ripple & Noise :	1%

General Description



Features

1. **High reliability**
2. **100% burn-in tested**
3. **100% Hi-pot tested**
4. **Safety Approvals, EMC compliance**
5. **Meets CEC, ERP, EISA, and Energy Star Level V requirements**
6. **No load power consumption <300mW**
7. **Short circuit, over load, over voltage protection**





ETA-USA

HIGH QUALITY SWITCHING POWER SUPPLIES

Output Characteristic	Unit	Models							
		DTA24-05SX-W-C2-II	DTA24-09SX-W-C2-II	DTA24-12SX-W-C2-II	DTA24-16SX-W-C2-II	DTA24-18SX-W-C2-II	DTA24-24SX-W-C2-II	DTA24-36SX-W-C2-II	DTA24-48SX-W-C2-II
Output Voltage	Vdc	5	9	12	16	18	24	36	48
Output Current	A	3	2.66	2	1.5	1.34	1	0.67	0.5
Voltage Adjust Range	V	±5% of Rated Output Voltage (at no load within the input range)							
Ripple & Noise(max)	mVpp	50	90	120	160	180	240	360	480
Hold up time	mS	>10 mS typical							
Regulation									
a. Voltage regulation	mV	+5%/-3%							

Environmental Specification	
Operating Temperature	-20°C to +40°C
Storage Temperature	-20°C to +85 °C
Humidity	20~90%
MTBF demonstrated	>150,000 hours at full load and 25 °C ambient temperature
Environmental Agencies	
Safety Standards	CSA 22.2-No.60950-1 NEMKO EN60950-1 CB IEC 60950-1
EMI Standards (Meet)	FCC Part 15Class B CISPR 22 Class B EN 55022 Class B CE
Protection	
Short circuit protection	Auto-recover
Over Voltage Protection	Latch, AC recycle
Over Load Protection	Auto-recover
Mechanical	
Dimension [mm]	L80.0mm×W50.0×H35.0mm

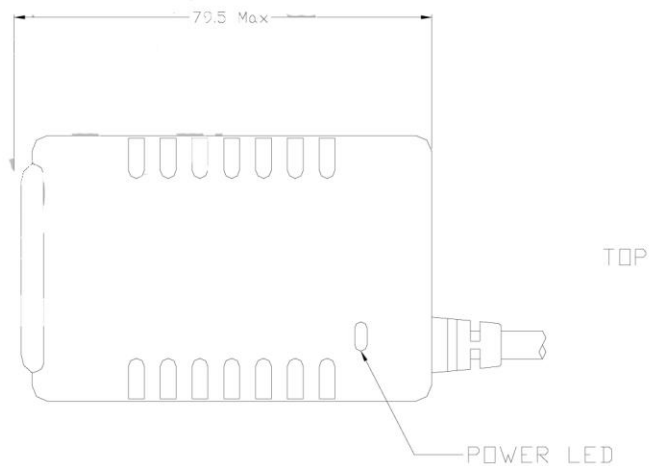
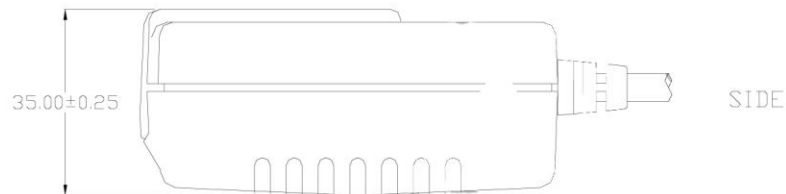
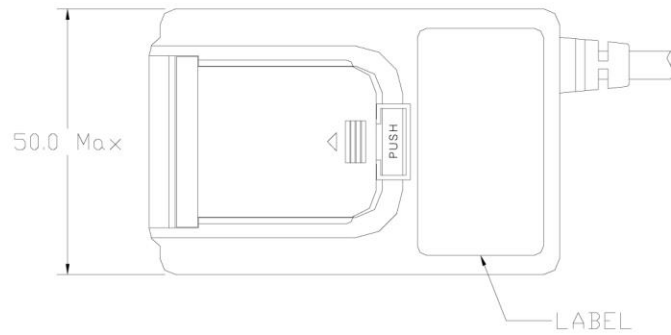


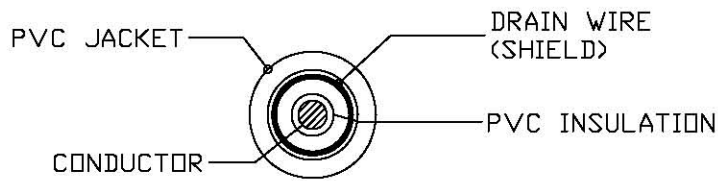


ETA-USA

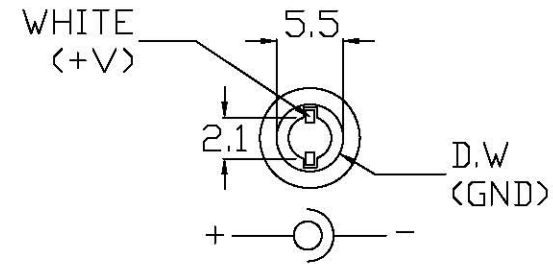
HIGH QUALITY SWITCHING POWER SUPPLIES

DIMENSION DIAGRAM (mm)

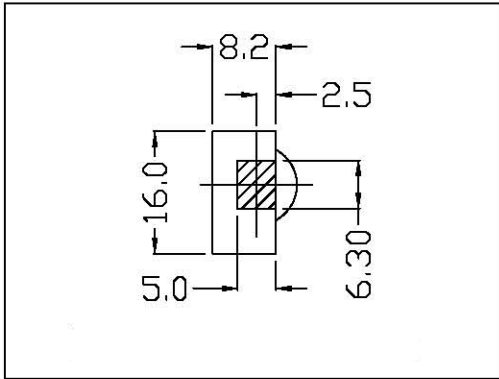
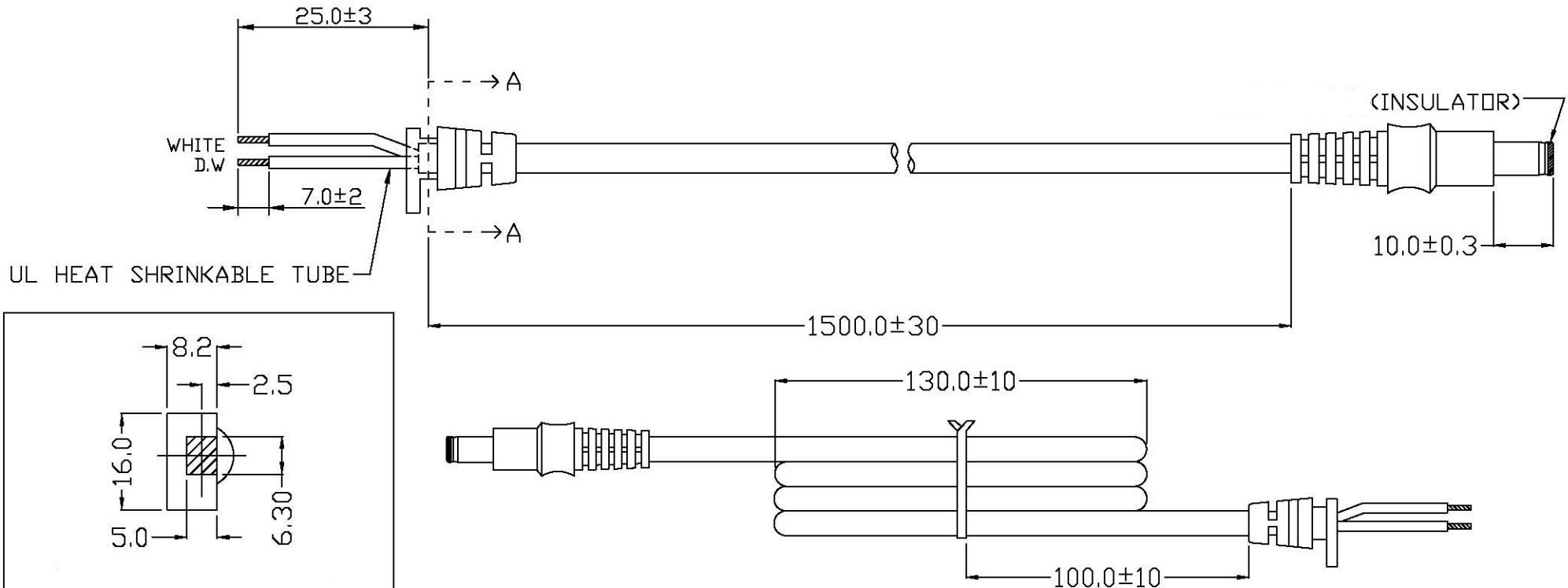




[1185#18AWG 1C+1]
SECTIONAL DRAWING



FRONT VIEW
DC PLUG FORK TYPE



SECTION A-A


ETA-USA
16170 Vineyard Blvd #180
Morgan Hill, CA 95037
408-778-2793
eta-usa.com

TITLE		DC CORD 1500mm 1C+1(2.1*5.5*10.0-180度)			
MODEL		12V~24V			
DWG NO.	EG-MAP-02-831B	UNIT	mm		
PART NO.	P54400D0728B	SCALE			
PREPARE	DRAWING	CHECKED	APPROVED	REV.	B
				DATE	2010/04/09

DESCRIPTION	
MATERIAL	
THICKNESS	
FINISH	
TOLERANCE	

COMPONENT LIST
1.CABLE : COLOR BLACK UL/CSA 1185 80/90°C 300V 18AWGX1C+ SHIELD
2.PVC WIRES : WHITE
3.CONNECTOR : OD 5.5φ / ID2.1φ / L 10.0mm
4. Fuan Gee DC JACK 5521J (P53075521F04)

REVISIONS	
Rev.A	2010/03/18
Rev.B SR	2010/04/09