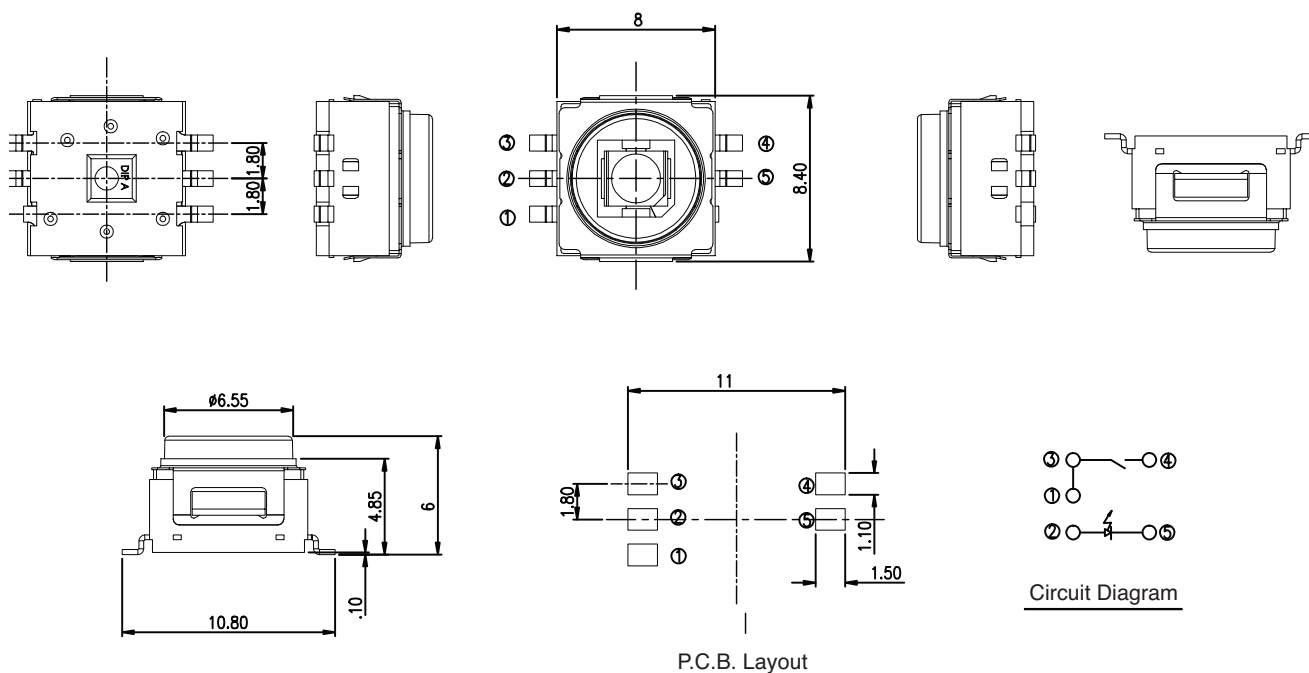


## Dimensions: mm

**Electrical Specifications:**

- Rating: 50mA/32VDC
- Contact Resistance: 100mΩ Max.

| Mouser Stock No. | LED Color |
|------------------|-----------|
| 101-M9BR-EV      | Blue      |
| 101-M9GR-EV      | Green     |
| 101-M9OR-EV      | Orange    |
| 101-M9RR-EV      | Red       |
| 101-M9WR-EV      | White     |

**Mechanical Specifications:**

- Operating Temperature: -40°C to +85°C
- Operating Life: 300,000 Cycles
- Operating Force: 400gf±100gf
- Stroke: .45±.15mm

**Note:**

- RoHS Compliant

**Illuminated Tactile Switches**

101-M9BR-EV, 101-M9GR-EV, 101-M9OR-EV,  
101-M9RR-EV, 101-M9WR-EV

**Mountain  
Switch**