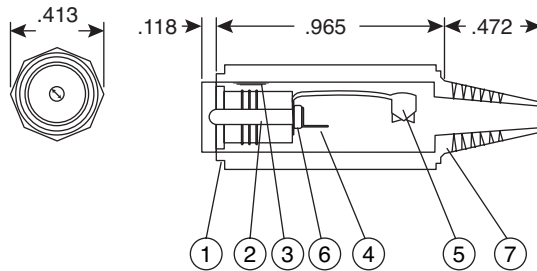
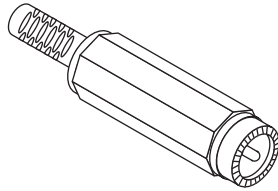


# In-Line DC Power Jack

163-0300-EX, 163-0301-EX



In-Line DC Power Jack



## DIMENSIONS: IN

Mouser Stock No.	Center Pin	
	Diameter	Length
163-0300-EX	2.0mm	8.5mm
163-0301-EX	2.35mm	8.5mm

SPECIFICATIONS	
Power Rating:	12VDC 1A
Insulation Resistance:	100MΩ min. @ 500VDC
Contact Resistance:	50mΩ max.
Voltage Breakdown:	500VAC for 1 minute
Mating Plug O.D.:	5.5mm
Max Cable O.D.:	4mm
RoHS Compliant by Exemption	

Materials		
1	Body:	Nickel Plated Brass
2	Pin:	Nickel Plated Brass
3	Spring:	Nickel Plated Brass
4	Terminal A:	Nickel Plated Brass
5	Terminal B:	Nickel Plated Brass
6	Insulator:	POM
7	Cap:	Polyethylene 80°C max.

Date Last Revised: 4-5-05

**Available from Mouser Electronics**  
**1-800-346-6873**  
**www.mouser.com**

KC-300832

163-0300-EX, 163-0301-EX