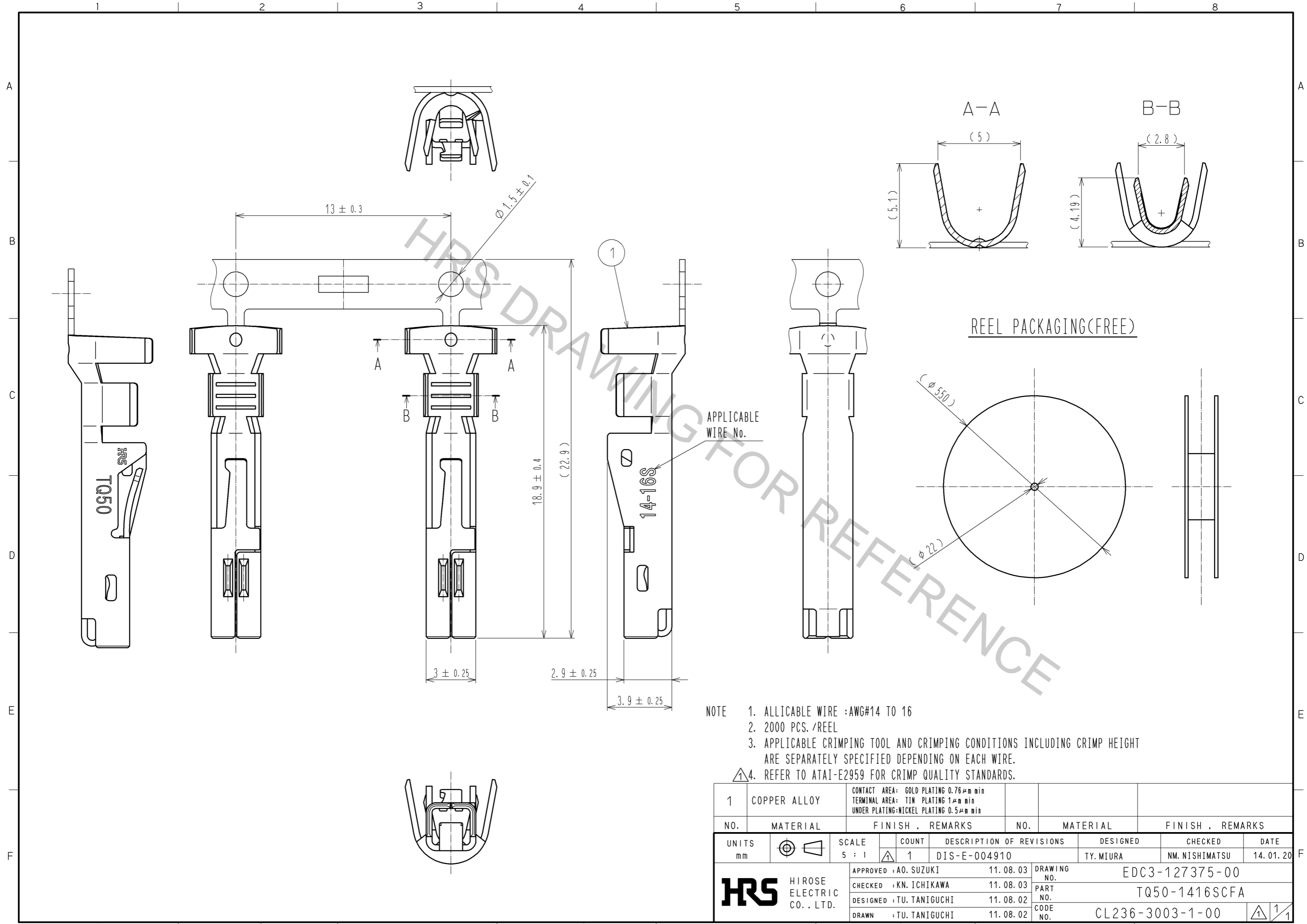


Dec.1.2018 Copyright 2018 HIROSE ELECTRIC CO., LTD. All Rights Reserved.
 In case that the application demands a high level of reliability, such as automotive,
 please contact a company representative for further information.



- NOTE
1. ALLICABLE WIRE :AWG#14 TO 16
 2. 2000 PCS./REEL
 3. APPLICABLE CRIMPING TOOL AND CRIMPING CONDITIONS INCLUDING CRIMP HEIGHT ARE SEPARATELY SPECIFIED DEPENDING ON EACH WIRE.
 4. REFER TO ATAI-E2959 FOR CRIMP QUALITY STANDARDS.

1	COPPER ALLOY	CONTACT AREA: GOLD PLATING 0.76μm min TERMINAL AREA: TIN PLATING 1μm min UNDER PLATING: NICKEL PLATING 0.5μm min						
NO.	MATERIAL	FINISH	REMARKS	NO.	MATERIAL	FINISH	REMARKS	
UNITS		SCALE	COUNT	DESCRIPTION OF REVISIONS		DESIGNED	CHECKED	DATE
mm		5 : 1	1	DIS-E-004910		TY. MIURA	NM. NISHIMATSU	14. 01. 20
HRS HIROSE ELECTRIC CO., LTD.		APPROVED : A0. SUZUKI	11. 08. 03	DRAWING NO.		EDC3-127375-00		
		CHECKED : KN. ICHIKAWA	11. 08. 03	PART NO.		TQ50-1416SCFA		
		DESIGNED : TU. TANIGUCHI	11. 08. 02	CODE NO.		CL236-3003-1-00		
		DRAWN : TU. TANIGUCHI	11. 08. 02					