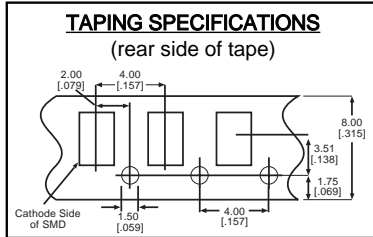
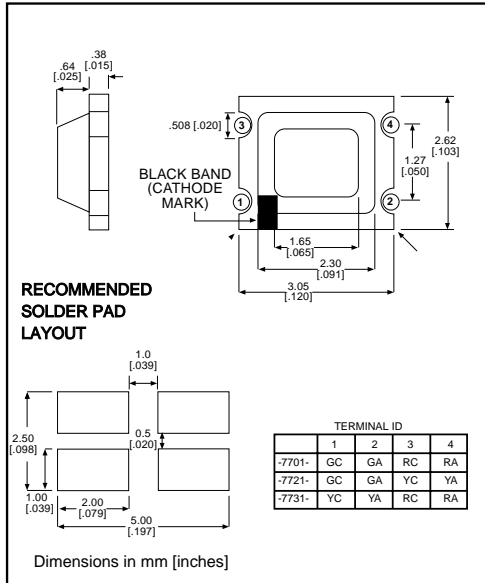




# Surface Mount LED Bi-Color

# Dialight

## 597-77x1-1xx



### Features

- Compatible with automatic placement equipment
- Compatible with infrared reflow processes
- Packaged on 8mm tape, 7" reels (meets EIA-481-1 standard)
- Helps to eliminate mixed technology PC board processing
- Compatible with Dialight's Optopipe™ Series light pipes

### PART NO.\* COLOR

- 597-7701-1xx Red/Green
- 597-7721-1xx Yellow/Green
- 597-7731-1xx Red/Yellow

### \*ORDERING INFORMATION

**597-77x1-1xx**

packaging option

02	20 pieces on tape
07	7" reel, 3000 pcs/reel

### ABSOLUTE MAXIMUM RATINGS (T<sub>A</sub>=25°C)

	Red/Green <b>-7701</b>	Yellow/Green <b>-7721</b>	Red/Yellow <b>-7731</b>
Power Dissipation (mW)	65/65	70/65	65/70
Forward Current (mA)	25	25	25
Derating (mA/°C)	.33	.33	.33
Peak Current (mA) <i>Pulse width = 1 μs</i>	100	100	100
Operating Temperature (°C)	-25/+75	-25/+75	-25/+75
Storage Temperature (°C)	-30/+85	-30/+85	-30/+85
Soldering Profile	240°C to 260°C for 10 seconds		

Solder Adherence per MIL-STD-202E, Method 208C

### OPERATING CHARACTERISTICS (T<sub>A</sub>=25°C)

		Red/Green <b>-7701</b>	Yellow/Green <b>-7721</b>	Red/Yellow <b>-7731</b>
Luminous Intensity (mcd)	Min.	1.6/6	3/6	1.6/3
	Typical	4/12	8/12	4/8
Peak Wavelength (nm)	Typical	630/565	585/565	630/585
Viewing Angle (2θ <sub>1/2</sub> )	Typical	170°	170°	170°
Forward Voltage (V)	Typical	2/2	2.1/2	2/2.1
	Max.	2.6/2.6	2.8/2.6	2.6/2.8
Reverse Voltage (V), I <sub>R</sub> =10μA	Min.	4	4	4

θ<sub>1/2</sub> is the off axis angle at which the luminous intensity is half the axial luminous intensity