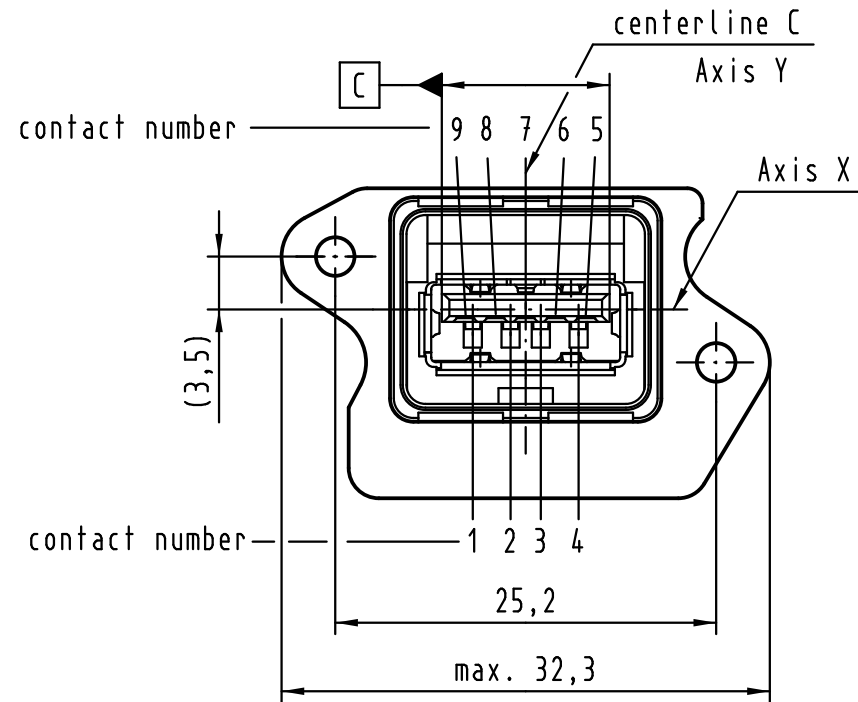
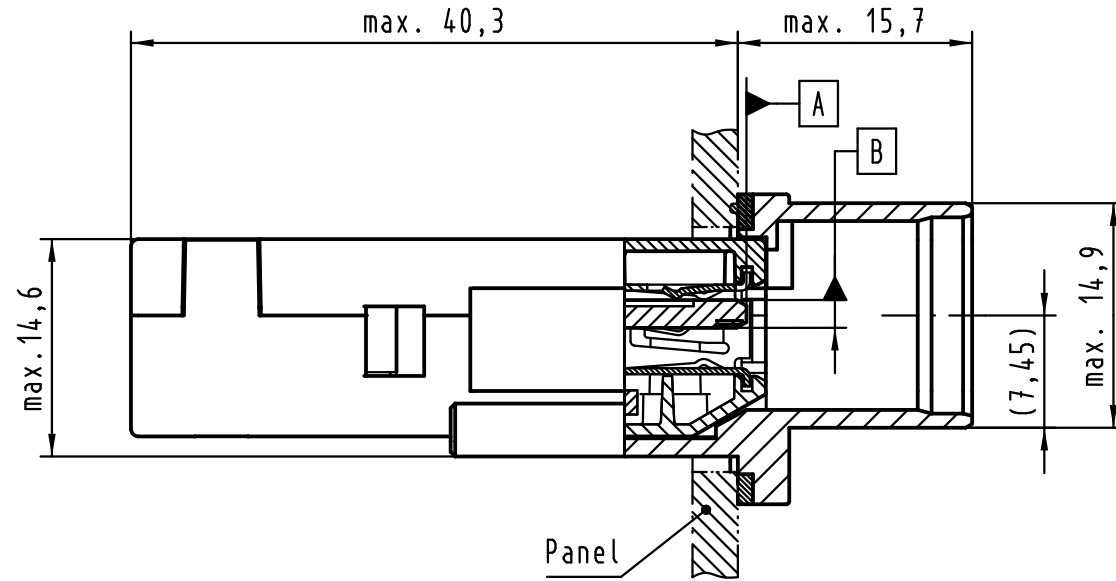


Alle Rechte vorbehalten/ All rights reserved

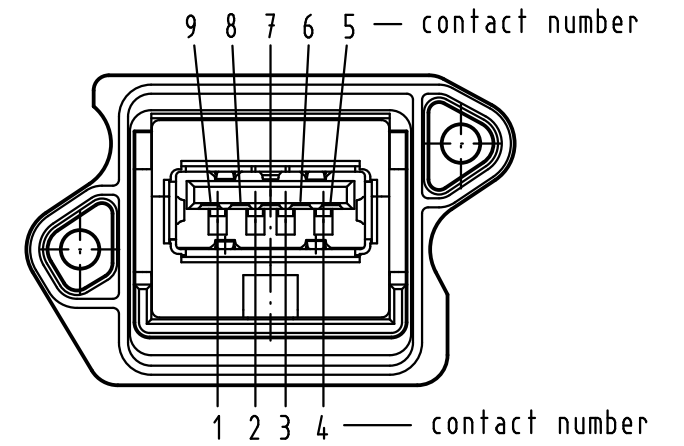
# USB 3.0 type A



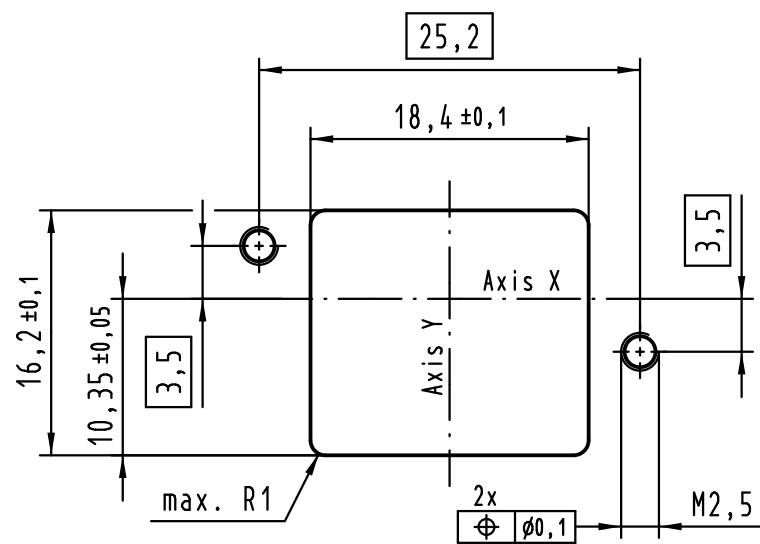
# A-A



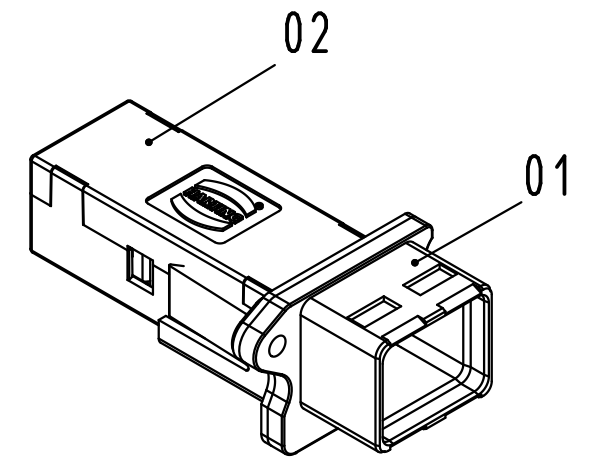
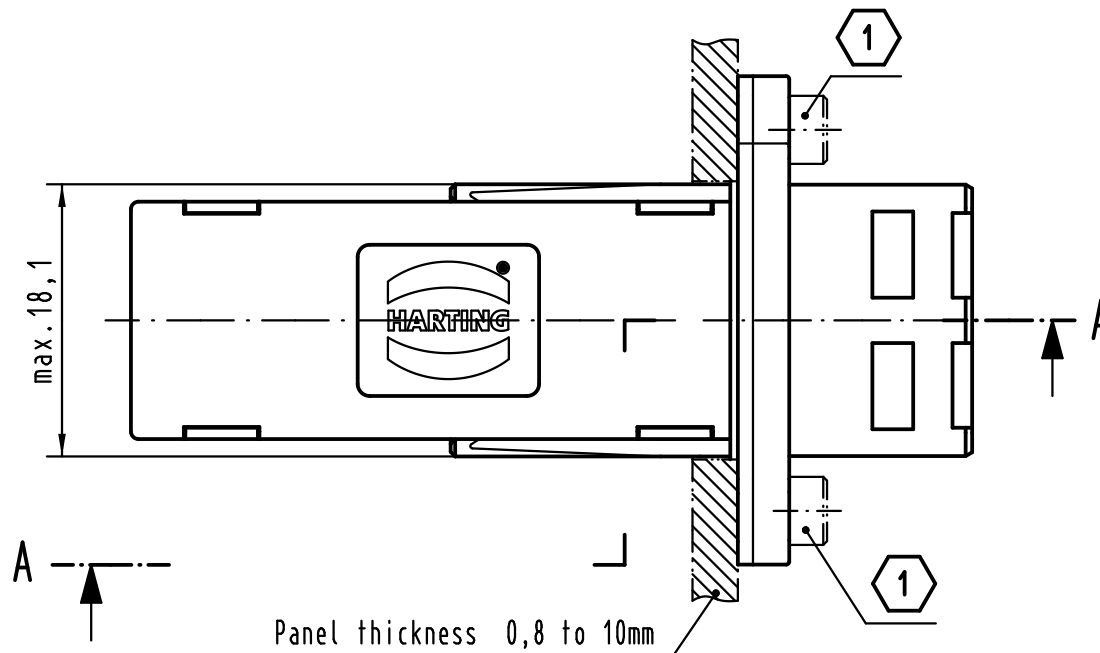
# USB 3.0 type A



# Panel Cutting



Connector pitch on panel:  
Axis X = 27mm and Axis Y = 21mm



# loading-plan

V Bus	1	1
D-	2	2
D+	3	3
GND	4	4
StdA_SSRX-	5	5
StdA_SSRX+	6	6
GND_DRAIN	7	7
StdA_SSTX-	8	8
StdA_SSTX+	9	9
Shield	Shell	Shell

1 Screwing 2x M2,5 screws between 0,3 - 0,5Nm, screw acc. to ISO 4762 order please separately

References A, B and C acc. to USB specification 2.0, www.usb.org

further information see: DS 09 45 623 02 02

pos.	number	description	part-number
02	1	USB 3.0 HIFF Bulkhead coupler type A-A	09 45 545 1902
01	1	HPP housing compact	09 45 545 0028

All Dimensions in mm Original Size DIN A 3	Techn. Character.			Nicht tolerierte Maßel Free size tolerances	
		Dat.	Name	<b>HARTING PushPull</b> Compact panel feed through USB 3.0 Type A	
		Detail.	14.02.12 hsv		
		Insp.	14.02.12 Lue.		
	Stand.				
HARTING Electronics GmbH & Co. KG D-32339 ESPELKAMP				TB 09 45 245 1904	Blatt/ page
36124	Mod.	Dat.		Name	Sub.