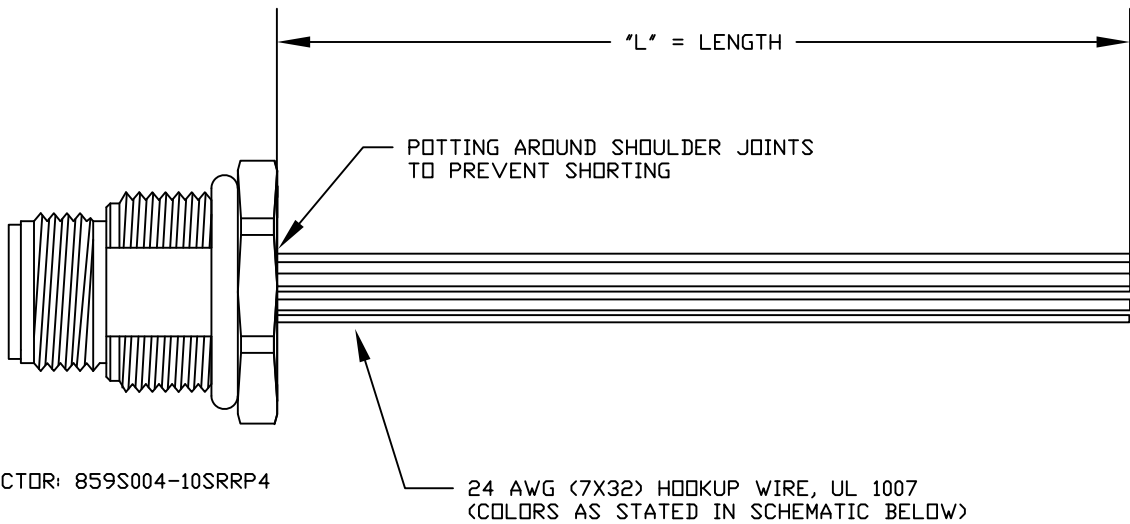


CONNECTOR: 859S004-10SRP4



**SEE PAGE 2 FOR DETAILS

WIRING SCHEMATIC	
1	2
PIN	PIN
1 = BROWN	1 = RED
2 = WHITE	2 = GREEN
3 = BLUE	3 = BLACK
4 = BLACK	4 = WHITE

MPM12A04IYYBR0Y

INCHES

01 = WIRING SCHEMATIC 1
02 = WIRING SCHEMATIC 2

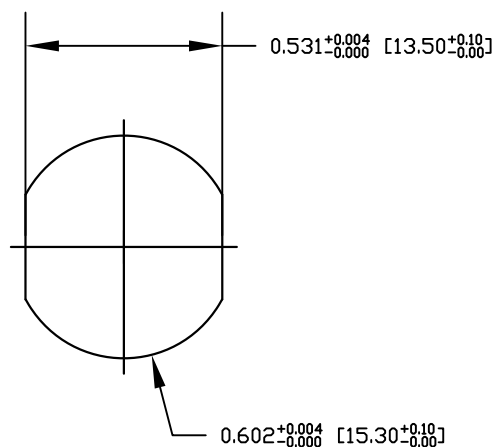
LENGTH
EX: 06 = 6 INCHES
12 = 12 INCHES

NOTE: PACKAGED 10 PER BAG

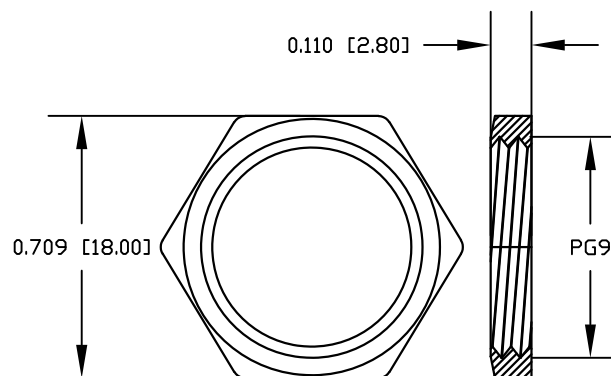
RoHS COMPLIANT

UNITS IN INCHES [MM] DO NOT SCALE FROM DRAWING

DESCRIPTION: M12 4 POSITION STAINLESS STEEL MALE PIGTAIL



RECOMMENDED PANEL CUT-OUT



NUT

NOTE:

MATERIAL

HOUSING:

CONTACT:

NUT:

SHELL:

O-RING:

FINISH

CONTACT:

UNDER PLATE:

ELECTRICAL

RATED CURRENT:

RATED VOLTAGE:

INSULATION RESISTANCE:

CONTACT RESISTANCE:

WATER PROOF:

ENVIRONMENT

OPERATION TEMPERATURE:

PBT UL94V-0, BLACK

BRASS

STAINLESS STEEL 316

STAINLESS STEEL 316

EPDM, BLACK

GOLD PLATED 10 μ " Min.

NICKEL

4A

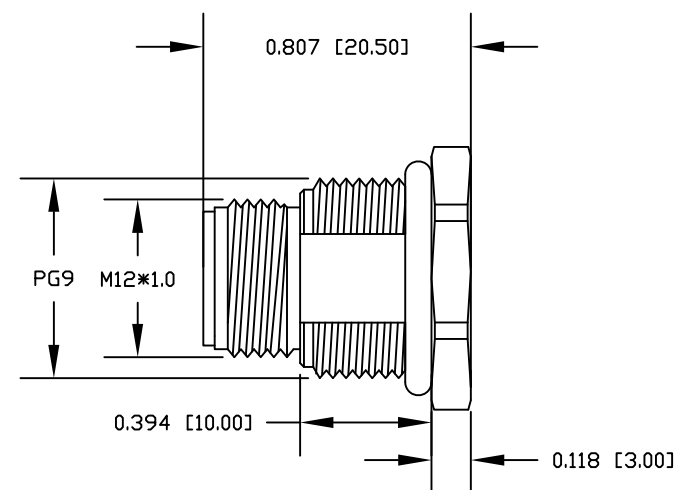
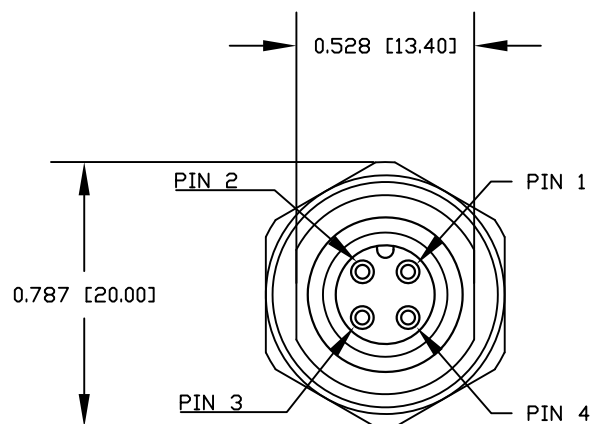
250V

100M Ω MIN

10m Ω MAX

IP67/68

-40°C ~ +85°C



RoHS COMPLIANT

UNITS IN INCHES [MM] DO NOT SCALE FROM DRAWING



THESE DRAWINGS AND SPECIFICATIONS ARE THE PROPERTY OF NorComp AND SHALL NOT BE REPRODUCED, COPIED OR USED AS THE BASIS FOR THE MANUFACTURE OR SALE OF APPARATUS WITHOUT WRITTEN PERMISSION.

DRAWN:

G. BROWN

DATE:

01/23/2019

NorComp

SCALE:

NTS

SHEET

OF

2

2

REV

1

DWG NO.

MPM12A04IYYBR0Y