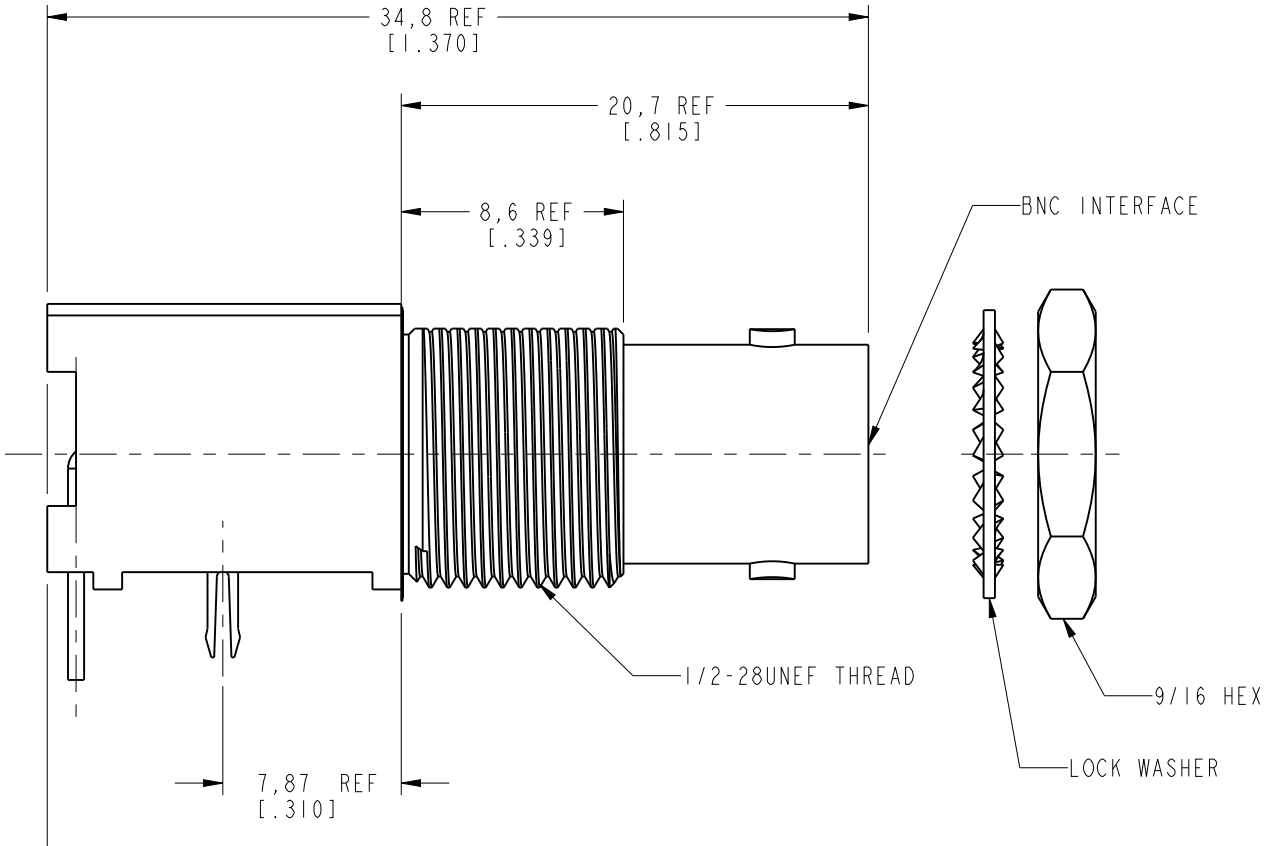
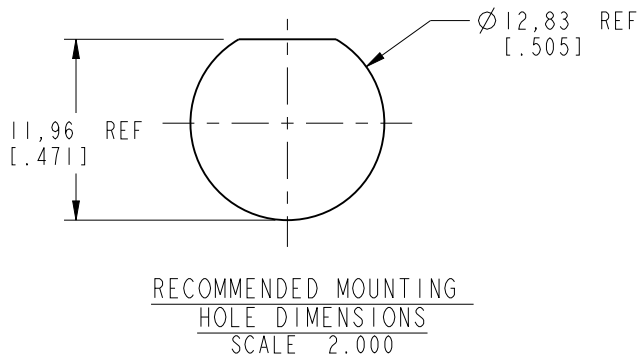
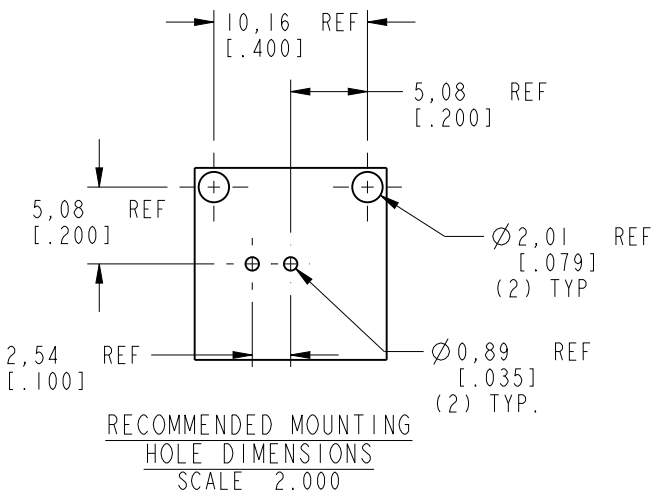
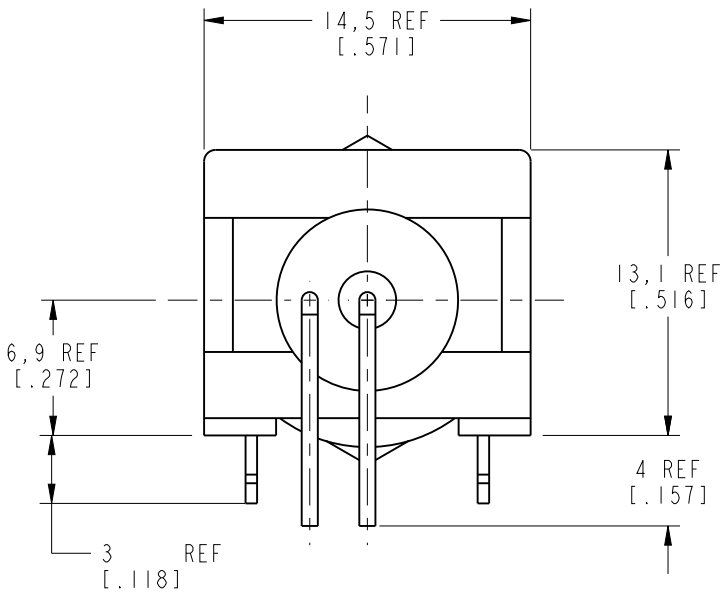


NOTES:

1. MATERIALS OF CONSTRUCTION:

BODY = ZINC DIE CAST, NICKEL PLATED (.000100 MIN. THICK)
CONTACT PIN = PHOSPHOR BRONZE (QQ-B-750), GOLD FLASH OVER NICKEL PLATED (.000050 MIN THICK)
POST = COPPER, BRIGHT TIN PLATED (.000080 THICK).
CONTACT TAILS ARE TIN OVER NICKEL (.000050 THICK)
FORK PINS (2) = BRASS (QQ-B-613), TIN PLATED
LOCKWASHER = BRASS (QQ-B-613), NICKEL PLATED (.000100 MIN THICK)
HOUSING = PBT (UL 94 V-0), COLOR WHITE
INSULATOR = POLYPROPYLENE (UL 94 HB), COLOR NATURAL
HEX NUT = BRASS (ASTM-B16 H02, C36000), NICKEL PLATED (.000100 MIN. THICK)

3. MAX. PANEL THICKNESS = 5mm [.197]



CUSTOMER OUTLINE DRAWING
ALL OTHER SHEETS ARE FOR INTERNAL USE ONLY

UNLESS OTHERWISE SPECIFIED, DIMENSIONS ARE IN MM (INCHES) AND TOLERANCES ARE:
0.5 - 6mm ±0.2mm
6 - 30mm ±0.4mm
30 - 120mm ±0.6mm

NOTICE - These drawings, specifications, or other data (1) are, and remain the property of Amphenol Corp. (2) must be returned upon request; and (3) are confidential and not to be disclosed to any person other than those to whom they are given by Amphenol Corp. The furnishing of these drawings, specifications, or other data by Amphenol Corp., or to any other person to anyone for any purpose is not to be regarded by implication or otherwise in any manner licensing, granting rights or permitting such holder or any other person to manufacture, use or sell any product, process or design, patented or otherwise, that may in any way be related to or disclosed by said drawings, specifications, or other data.

MATERIAL

REFERENCE
EAR# 363
GEN# 31-5431-10RFX_ASSY

DRAWN
C. McGRATH

DATE
2/22/02

ENGINEER
O. BARTHELME

DATE
2/22/02

APPROVED
O. BARTHELME

DATE
2/27/02

CAD FILE
I:\BNC\31-5486-10RFX

TITLE
BNC R/A PC
MOUNT RECEPTACLE
JACK

Amphenol
Amphenol Corporation
Communication and Network
Products Division
Danbury, CT U.S.A. 06810

SCALE: 3.0:1 SHEET 2 OF 2

CODE ID
74868

DWG SIZE
B

DRAWING NO.
31-5486-10RFX

REV
C