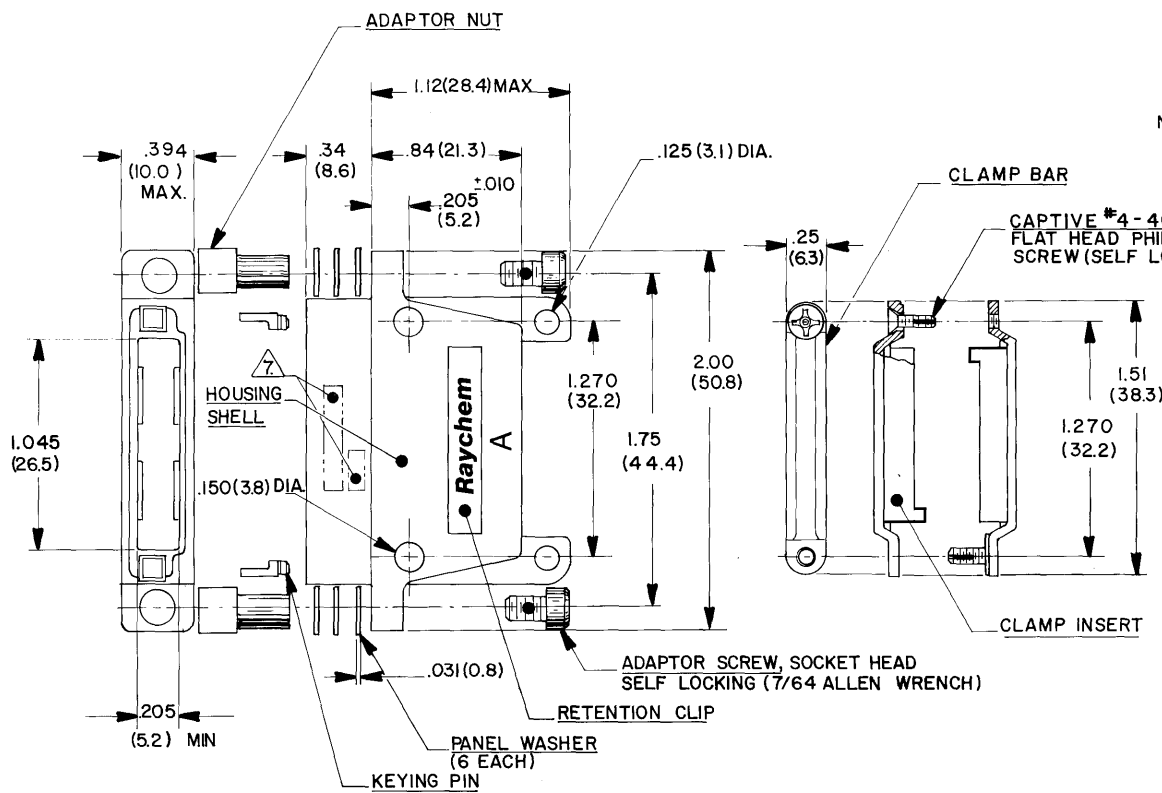


REVISIONS				
NO.	DATE	DESCRIPTION	BY	APPROVED
A	02-79	CHANGE PER DCO 00816	WLB	
B	12-12	REV PER ECO 12-020967 CT		KH



NOTES:

1. MATERIALS:

- 1-A. HOUSING SHELL; ALUMINUM ALLOY PER QQ-A-591.
- 1-B. RETENTION CLIP; COPPER ALLOY 172 PER QQ-C-533.
- 1-C. CAPTIVE SCREW; STAINLESS STEEL PER QQ-S-763,300 SERIES.
- 1-D. CLAMP INSERT; SILICONE ELASTOMER PER ZZ-R-765.
- 1-E. ADAPTOR SCREW; STAINLESS STEEL PER QQ-S-763,300 SERIES.
- 1-F. ADAPTOR NUT; STAINLESS STEEL PER QQ-S-763,300 SERIES.
- 1-G. PANEL WASHER; STAINLESS STEEL PER QQ-S-763,300 SERIES.
- 1-H. CLAMP BAR; STAINLESS STEEL PER QQ-S-763,300 SERIES.
- 1-J. KEYING PIN; POLYARYLENE THERMOPLASTIC, MOLDED.

2. FINISH:

- 2-A. HOUSING SHELL; NICKEL PLATED PER MIL-C-26074, CLASS 3, GRADE B.
- 2-B. RETENTION CLIP; NICKEL PLATED PER MIL-C-26074, CLASS 2, GRADE B.
- 2-C. CAPTIVE SCREW; PASSIVATED PER QQ-P-35.
- 2-D. ADAPTOR SCREW; PASSIVATED PER QQ-P-35.
- 2-E. ADAPTOR NUT; PASSIVATED PER QQ-P-35.
- 2-F. PANEL WASHER; PASSIVATED PER QQ-P-35.
- 2-G. CLAMP BAR; PASSIVATED PER QQ-P-35.

3. FOR MOUNTING / MATING AND KEYING INFORMATION, SEE **Raychem** DRAWING D652-0012.

4. HOUSING MEETS THE REQUIREMENTS OF **Raychem** SPECIFICATION D-6014.

5. THE FOLLOWING MOUNTING AND MATING HARDWARE ARE SUPPLIED NOT INSTALLED WITH EACH RECEPTACLE:
(2) KEYING PIN. (2) ADAPTOR NUT. (2) ADAPTOR SCREW.
(6) PANEL WASHERS.

© Raychem Corporation 1979

6. DUST COVER SUPPLIED INSTALLED WITH EACH RECEPTACLE.
7. **Raychem** PART NO. MTC100-YHI-004 AND DATE CODE IS STAMPED APPROXIMATELY AS SHOWN.

8. WEIGHT LBS | GRAMS
0640 | 26.98

9. CONFIGURATION CONTROL PER ES71001 APPLIES.

CONNECTOR SPECIFICATION CONTROL DRAWING

UNLESS OTHERWISE SPECIFIED DIMENSIONS ARE IN INCHES BRACKETED DIMENSIONS () ARE METRIC AND TOLERANCES ARE: .XXX: ± .005 (0.125 M.M.) .XX: ± .02 (0.508 M.M.) .X: ±	DRAWN	SA. LOPEZ	8/2/79	Raychem <small>RAYCHEM CORPORATION 300 CONSTITUTION DRIVE MENLO PARK, CALIFORNIA 94025</small> TITLE RECEPTACLE HOUSING 1 INCH WITH CABLE CLAMP MTC100 SERIES - CONDUCTIVE FINISH
	CHECKED	SP	8-2-79	
	APPROVED	Plan	8-2-79	
	APPROVED	WLB	8-2-79	
	APPROVED	AKR	8-2-79	
	PROJECT	6448-H 008		SIZE C CODE IDENT NO. 06090 DWG. NO. MTC100-YHI-004 WEIGHT <u>Ⓢ</u> SHEET 1 OF 1 CONFIGURATION CONTROL

If this document is printed it becomes uncontrolled. Check with the web for latest revision.

DO NOT SCALE THIS DRAWING