

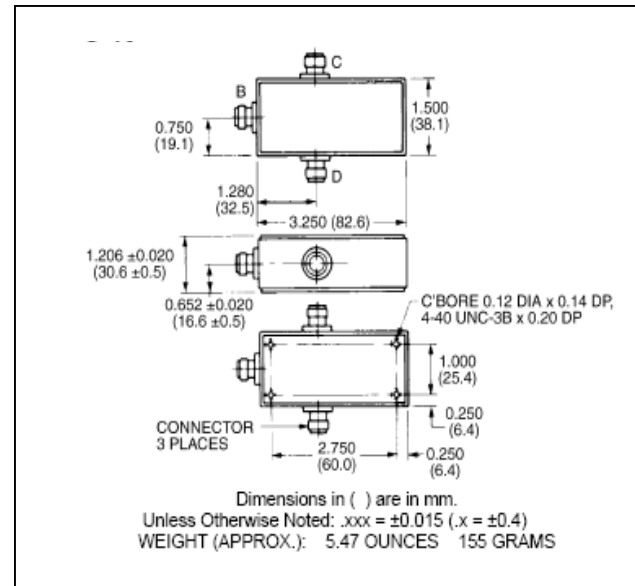
## Broadband Two-Way Power Divider, 2 MHz - 2 GHz

Rev. V2

### Features

- 11 Octave Coverage
- Low Loss - 1.25 dB Max
- High Isolation - 20dB Min

### C-19



### Guaranteed Specifications: From -55°C to +85°C

Frequency Range		30-3000 MHz
Insertion Loss (less coupling)	2-10 MHz 10-1000 MHz 1000 MHz-2 GHz	1.0 dB Max 1.0 dB Max 1.7 dB Max
Isolation	2-10 MHz 10-1000 MHz 1000 MHz-2 GHz	20 dB Min 25 dB Min 20 dB Min
Amplitude Balance	2-10 MHz 10-1000 MHz 1000 MHz-2 GHz	0.1 dB Max 0.1 dB Max 0.6 dB Max
VSWR (All Ports)	2-10 MHz 10-1000 MHz 1000 MHz-2 GHz	2.5:1 Max 1.3:1 Max 1.5:1 Max
Phase Balance	2-1000 MHz 1000 MHz-2 GHz	2.5° Max 5° Max

### Operating Characteristics

Parameter	Absolute Maximum
Impedance	50 Ohms Nominal
Maximum Power Rating Or Input Power	2.0 Watt Max
Internal Load Dissipation	0.5 Watt Max
Environmental MIL-STD-883 screening available.	

\* All specifications apply with 50 ohm source and load impedance.

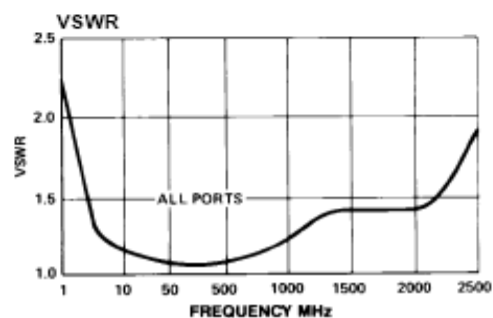
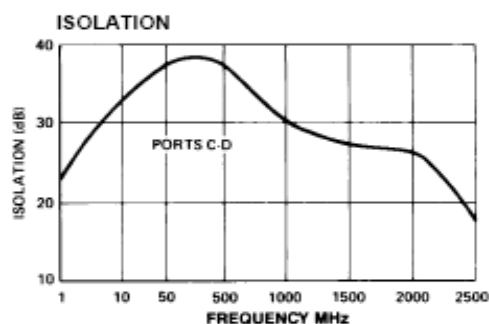
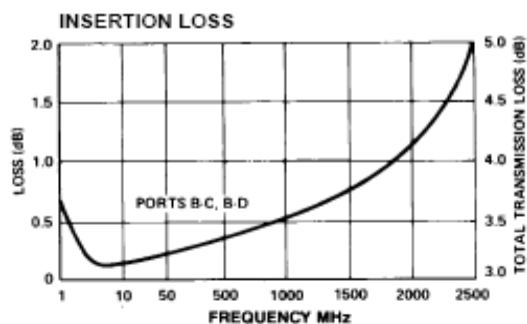
**ADVANCED:** Data Sheets contain information regarding a product M/A-COM Technology Solutions is considering for development. Performance is based on target specifications, simulated results, and/or prototype measurements. Commitment to develop is not guaranteed.

**PRELIMINARY:** Data Sheets contain information regarding a product M/A-COM Technology Solutions has under development. Performance is based on engineering tests. Specifications are typical. Mechanical outline has been fixed. Engineering samples and/or test data may be available. Commitment to produce in volume is not guaranteed.

• **North America** Tel: 800.366.2266 • **Europe** Tel: +353.21.244.6400  
• **India** Tel: +91.80.4155721 • **China** Tel: +86.21.2407.1588  
Visit [www.macomtech.com](http://www.macomtech.com) for additional data sheets and product information.

M/A-COM Technology Solutions Inc. and its affiliates reserve the right to make changes to the product(s) or information contained herein without notice.

## Typical Performance Curves



## Ordering Information

Part Number	Package
H-8-4 N	Connectorized
H-8-4 SMA	Connectorized
H-8-4 TNC	Connectorized
H-8-4 BNC	Connectorized

## Functional Diagram

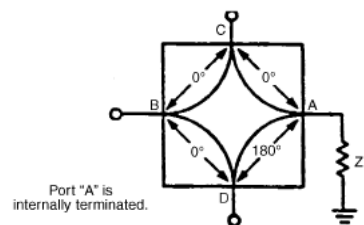


Figure 1. 2-Way, In-Phase (0°) Power Divider/Summer, or ISO-T