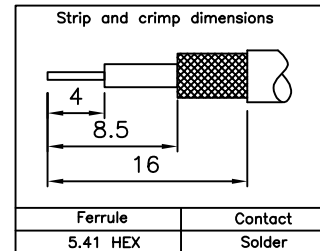
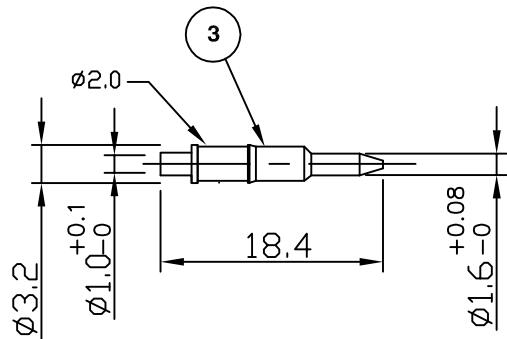
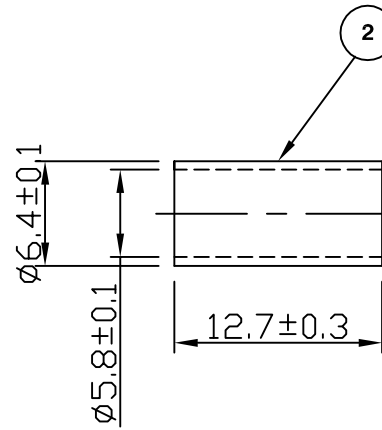
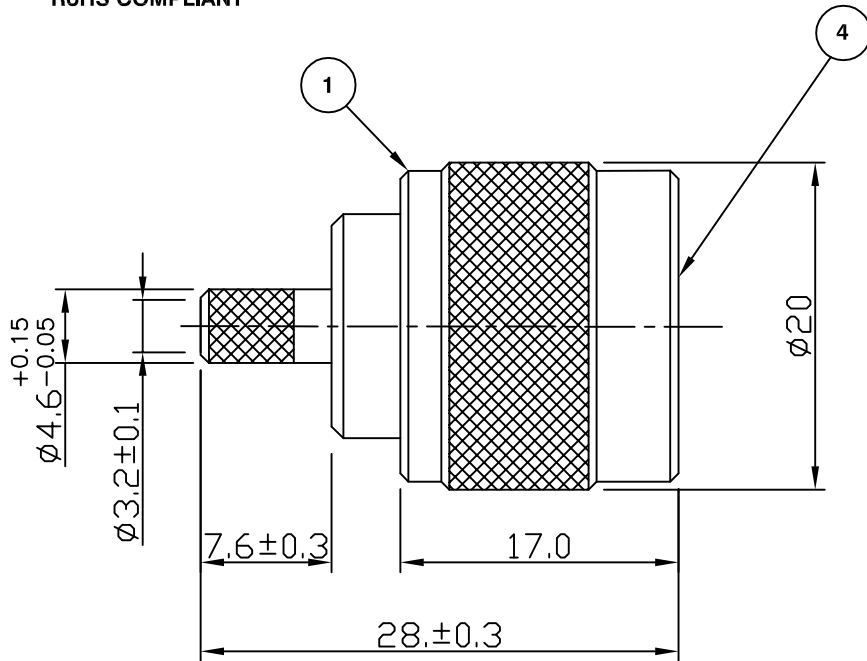


RoHS COMPLIANT



Electrical Characteristics

| | |
|-------------------------------------|-----------------------------|
| Nominal Impedance: | 50 ohms |
| Frequency Range: | DC to 11 GHz |
| VSWR: | 1.3:1 maximum |
| Insertion Loss: | 0.3 dB at 10 GHz |
| Operating Voltage (rms): | 1000 V maximum at sea level |
| Dielectric Withstand Voltage (rms): | 2500 V maximum at sea level |
| Contact Resistance: | 1.0 milliohms maximum |
| Insulation Resistance: | 5000 megohms minimum |

Mechanical Characteristics

| | |
|-----------------------|------------------------|
| Mating Cycles: | 500 cycles minimum |
| Interface Dimensions: | Conform to MIL-C-39012 |

Environmental Characteristics

| | |
|--------------------|-------------------|
| Temperature Range: | -65 °C to +165 °C |
|--------------------|-------------------|

| PART | DESCRIPTION |
|------|---|
| 1 | Body Brass, nickel plated 2.54 μm |
| 2 | Ferrule Brass, nickel plated 2.54 μm |
| 3 | Contact Brass, gold plated 0.076 μm - 0.127 μm |
| 4 | Dielectric PTFE |
| 5 | Gasket Rubber |

| DESCRIPTION OF REVISION | APPVD | ISS | DATE |
|-----------------------------|-------|-----|-----------|
| Strip & Crimp Details added | MS | 3 | 11 Sep 09 |
| CAD Issue | SN | 2 | 29 Jan 02 |
| First Issue | AT | 1 | 02 Feb 95 |

For stripping and assembly instructions see Drawing Number: VAIN1101



Cinch Connectivity Solutions
 7 - 13 Russell Way,
 Widford Industrial Estate,
 Chelmsford, Essex,
 CM1 3AA, UK
 Tel: +44 (0)1245 359515
 Fax: +44 (0)1245 358938

SCALE: Not To Scale

DIMENSIONS: mm

TOLERANCES:
 ± 0.2mm unless
 otherwise stated

| | |
|--------------|-----------|
| DRAWN BY: | S Nash |
| CHECKED BY: | S Nash |
| APPROVED BY: | M Nielsen |
| DATE: | 29 Jan 02 |

TITLE:
**N Crimp Plug for RG142,
 RG223, RG400**

PART NUMBER:
VN10-2050

PAGE: 1 of 1