

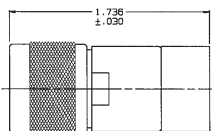
RED INDICATES ORIGINAL

DWG S176	DATA CONTAINED IN THIS DOCUMENT IS UNCLASSIFIED EXCEPT WHERE SHOWN OTHERWISE. IT IS THE PROPERTY OF TROMPETER AND SHALL NOT BE DISTRIBUTED OR REPRODUCED IN ANY FORM OR BY ANY MEANS, ELECTRONIC OR MECHANICAL, INCLUDING PHOTOCOPYING, RECORDING, OR BY ANY INFORMATION STORAGE AND RETRIEVAL SYSTEM, WITHOUT EXPRESS WRITTEN PERMISSION.	REV ECD	DESCRIPTION	DWN	APPROVED	DATE
		H	12681	ADDED: -15, -16 & -17; SH 2 REDRAWN; SEE ECD	K	7/3/23

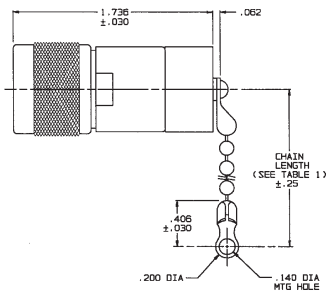
DASH NO	DESCRIPTION	DASH NO	DESCRIPTION
-1	TERM (NO CHAIN)	-10	TERM WITH 10.0 BRASS CHAIN
-2	TERM WITH 2.5 BRASS CHAIN	-11	TERM WITH 10.0 NYLON CHAIN
-3	TERM WITH 2.5 NYLON CHAIN	-12	TERM WITH 2.5 SST ROPE
-4	TERM WITH 3.0 BRASS CHAIN	-13	TERM WITH 3.0 SST ROPE
-5	TERM WITH 3.0 NYLON CHAIN	-14	TERM WITH 6.0 SST ROPE
-6	TERM WITH 6.0 BRASS CHAIN	-15	TERM WITH 4.0 SST ROPE
-7	TERM WITH 6.0 NYLON CHAIN	-16	TERM WITH 7.0 SST ROPE
-8	TERM WITH 4.0 BRASS CHAIN	-17	TERM WITH 4.5 SST ROPE
-9	TERM WITH 4.0 NYLON CHAIN		

DASH NO	"A" DIA	"B" DIA	"C" DIM	"D" DIA
-02	.630	.750	1.068	.450
-03	.505	.625	.941	.369
-04	.439	.562	.878	.355
-05	.380	.500	.816	.325
-06	.317	.437	.753	.295
-07	.281	.408	.722	.278
-08	.510	.750	1.068	.450
-09	.567	.687	1.003	.419
-00B	.330	.450	.786	.300

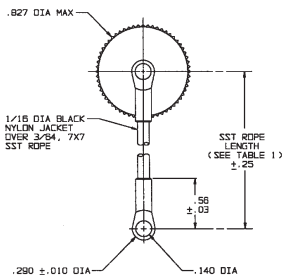
INCH	MM	INCH	MM	INCH	MM	INCH	MM	INCH	MM
.005	0.13	.290	7.37	.418	10.64	.625	15.88	.941	23.90
.010	0.25	.295	7.49	.437	11.10	.630	16.00	1.003	25.48
.030	0.76	.300	7.62	.436	11.15	.687	17.45	1.066	27.08
.032	0.81	.317	8.05	.450	11.43	.722	18.34	2.5	63.50
.062	1.57	.325	8.26	.500	12.70	.750	19.05	3.0	76.20
.140	3.55	.330	8.38	.505	12.83	.753	19.13	4.0	101.60
.200	5.08	.355	9.02	.56	14.22	.786	19.91	4.5	114.30
.25	6.35	.380	9.65	.562	14.27	.816	20.73	6.0	152.40
.278	7.06	.388	9.85	.567	14.40	.827	21.01	7.0	177.80
.281	7.14	.406	10.31	.610	15.48	.878	22.30	10.0	254.00



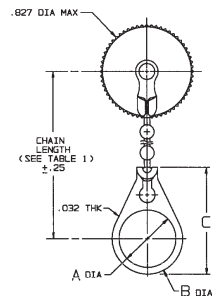
-1 SHOWN
NO CHAIN, STAINLESS STEEL ROPE OR MOUNTING LUG



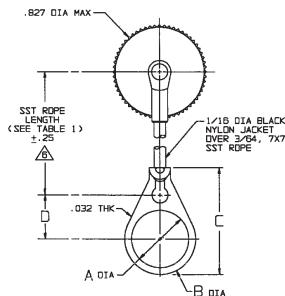
-2-△ THRU -11-△ SHOWN
STANDARD CHAIN & BASIC MOUNTING LUG



-12-△ THRU
-17-△ SHOWN
STAINLESS STEEL ROPE AND BASIC MOUNTING LUG



-2-△ -02 THRU
-11-△ -00B SHOWN
STANDARD CHAIN AND BULKHEAD JACK MOUNTING LUG



-12-△ -02 THRU
-17-△ -00B SHOWN
STAINLESS STEEL ROPE AND BULKHEAD JACK MOUNTING LUG

△ NOTE LENGTH FOR SST ROPE WITH MTG LUG OPTION IS NOT MEASURED TO CENTER OF BULKHEAD MTG LUG

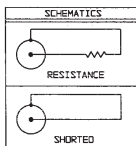
5. EXAMPLE OF COMPLETE MODEL NO: **TNN1-2-△ -02**
- TNN1: BASIC MODEL NO (50 OHM)
 - 2: CHAIN/ROPE MATL AND LENGTH (SEE TABLE 1)
 - △: BULKHEAD JACK MOUNTING LUG (OPTIONAL) WITH BRASS OR NYLON CHAIN AND STAINLESS STEEL ROPE (SEE TABLE 2)

4. TERMINATED MALE COAXIAL 50 & 75 OHM N TYPE PLUG WITH CHAIN & MOUNTING LUG OPTIONS

△ RESISTANCE VALUE IN OHMS (1/2W, 1%) SHOWN SHORTED TO CASE AND RESISTOR

2. FINISH: TFS-1A (NICKEL)

1. ALL DIM ARE IN INCHES



QTY	DESCRIPTION	PART NUMBER	ITEM
UNLESS SPECIFIED			
10 ± .005	TROMPETER RF CONNECTIVITY	TNN1/UTNN1	
DWN	DKC	9-30-88	MATERIAL
ENR	GM	10-6-98	CODE IDENT
APPR		14949	DRAWING NO.
		105-0376	REV
NEXT ASSY	SCALE 2:1	DATE 11-27-72	SHEET 1C