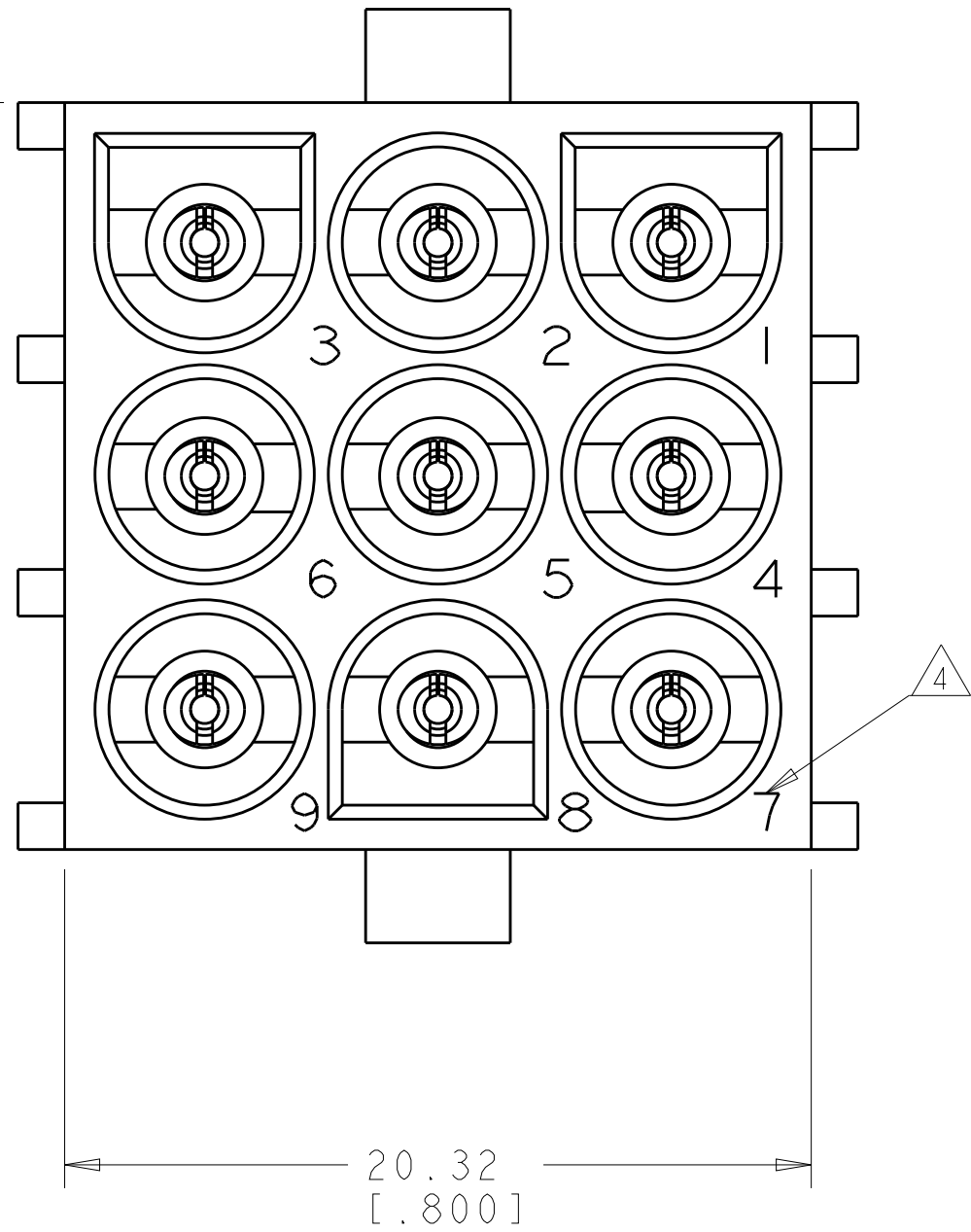
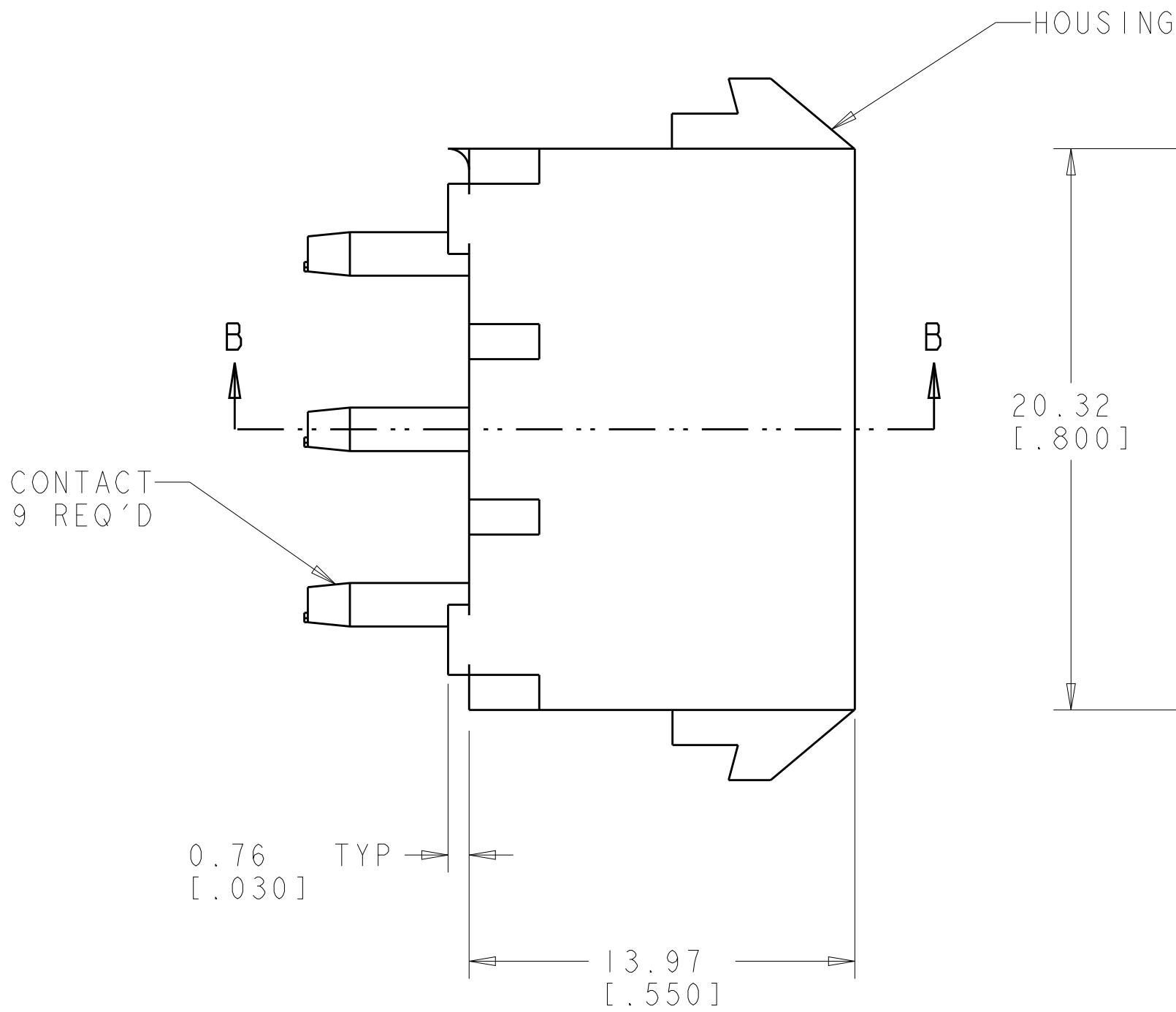
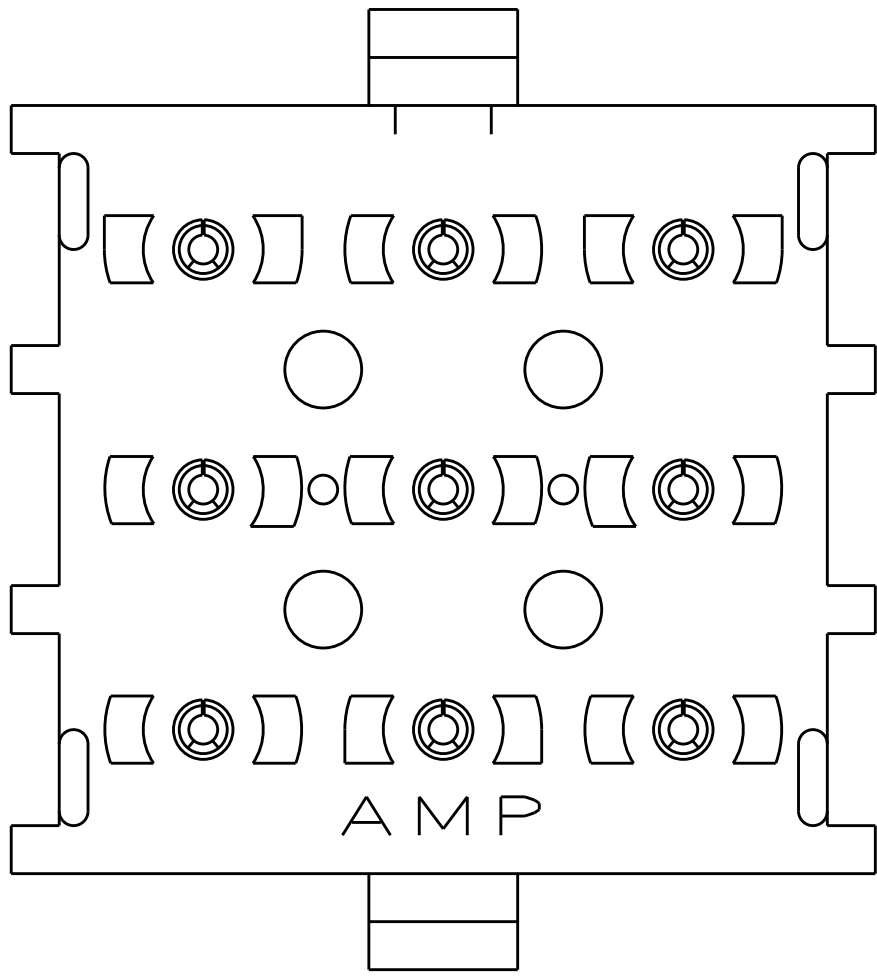
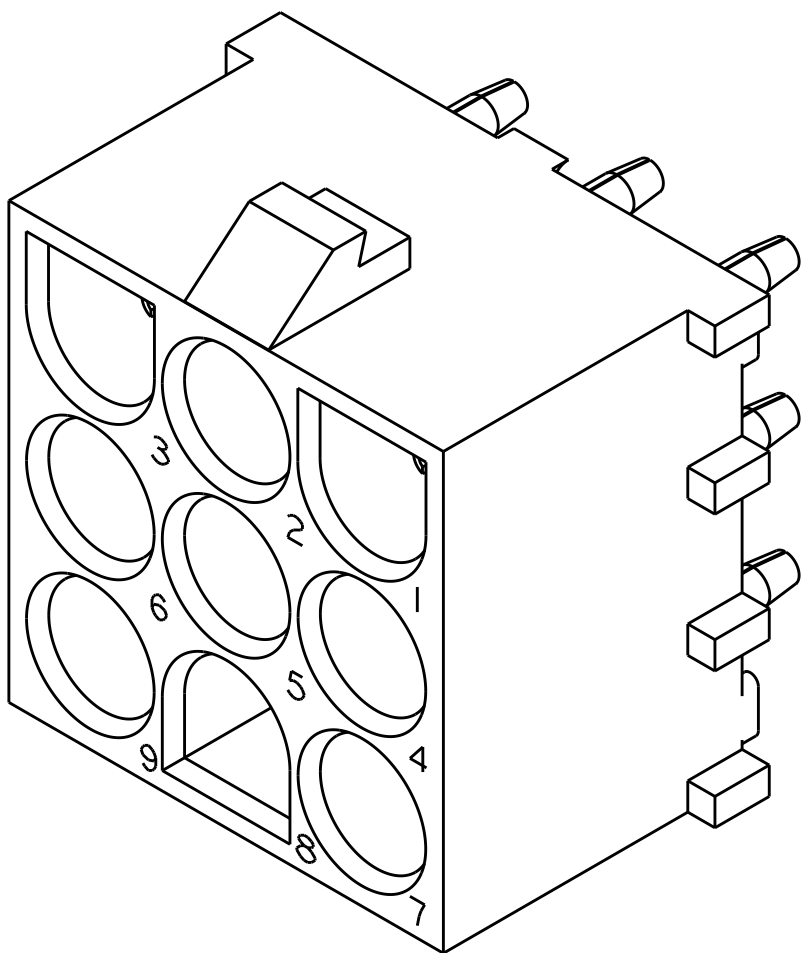
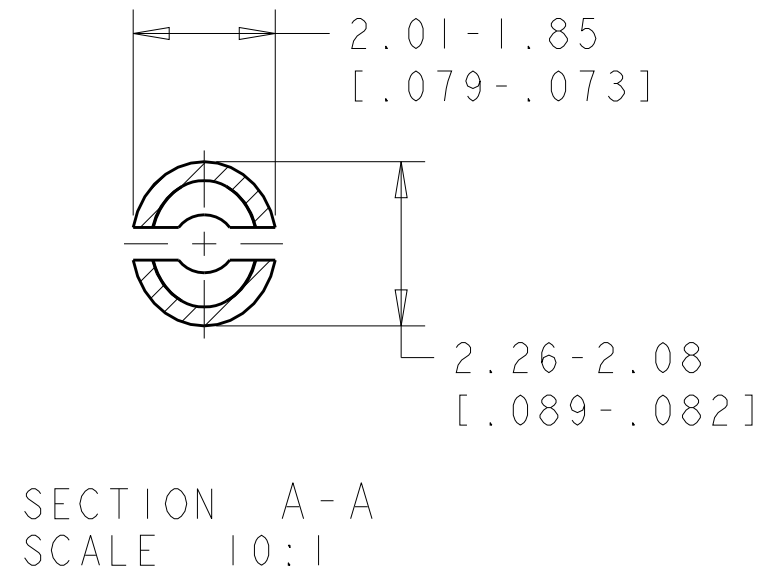
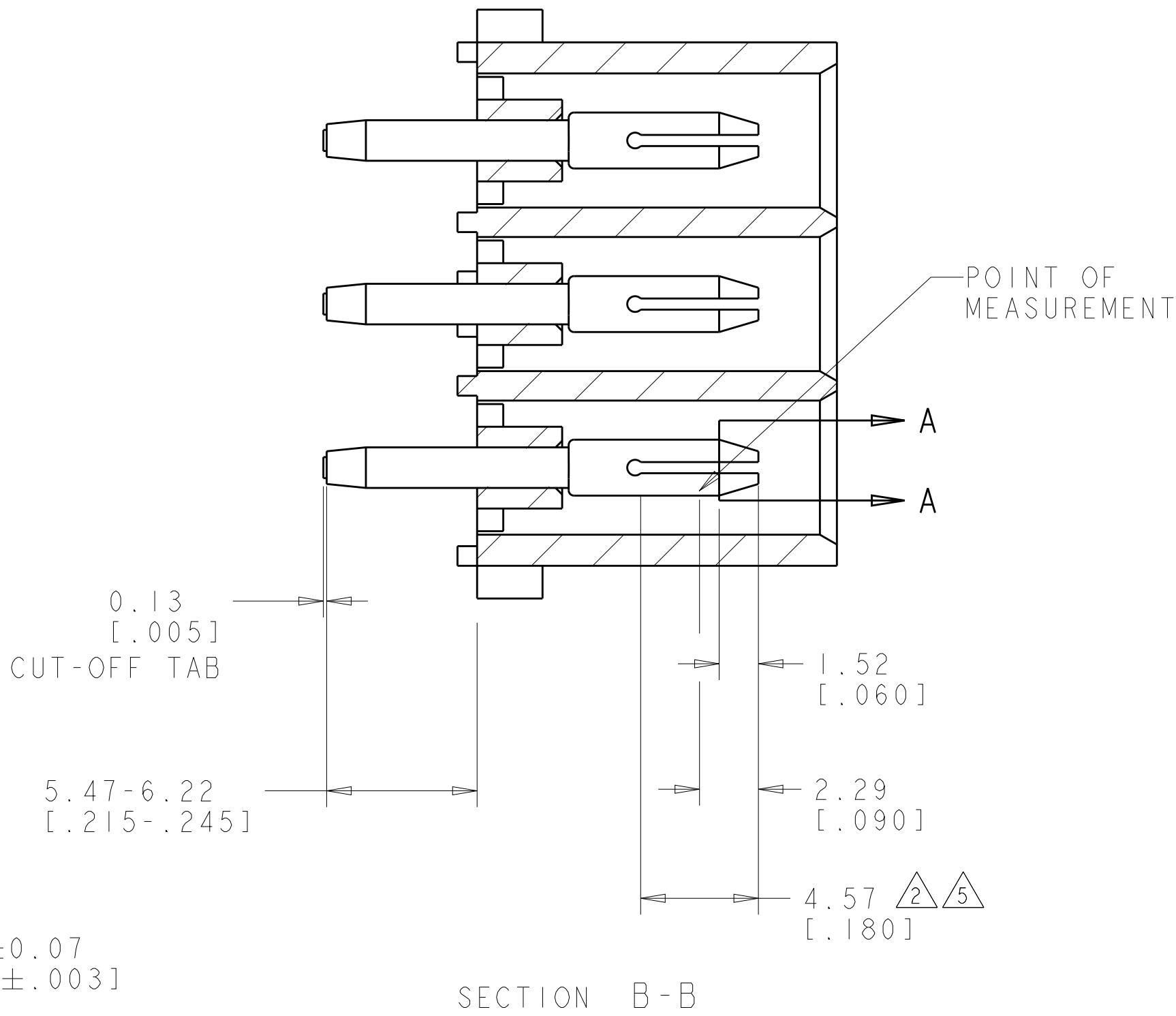


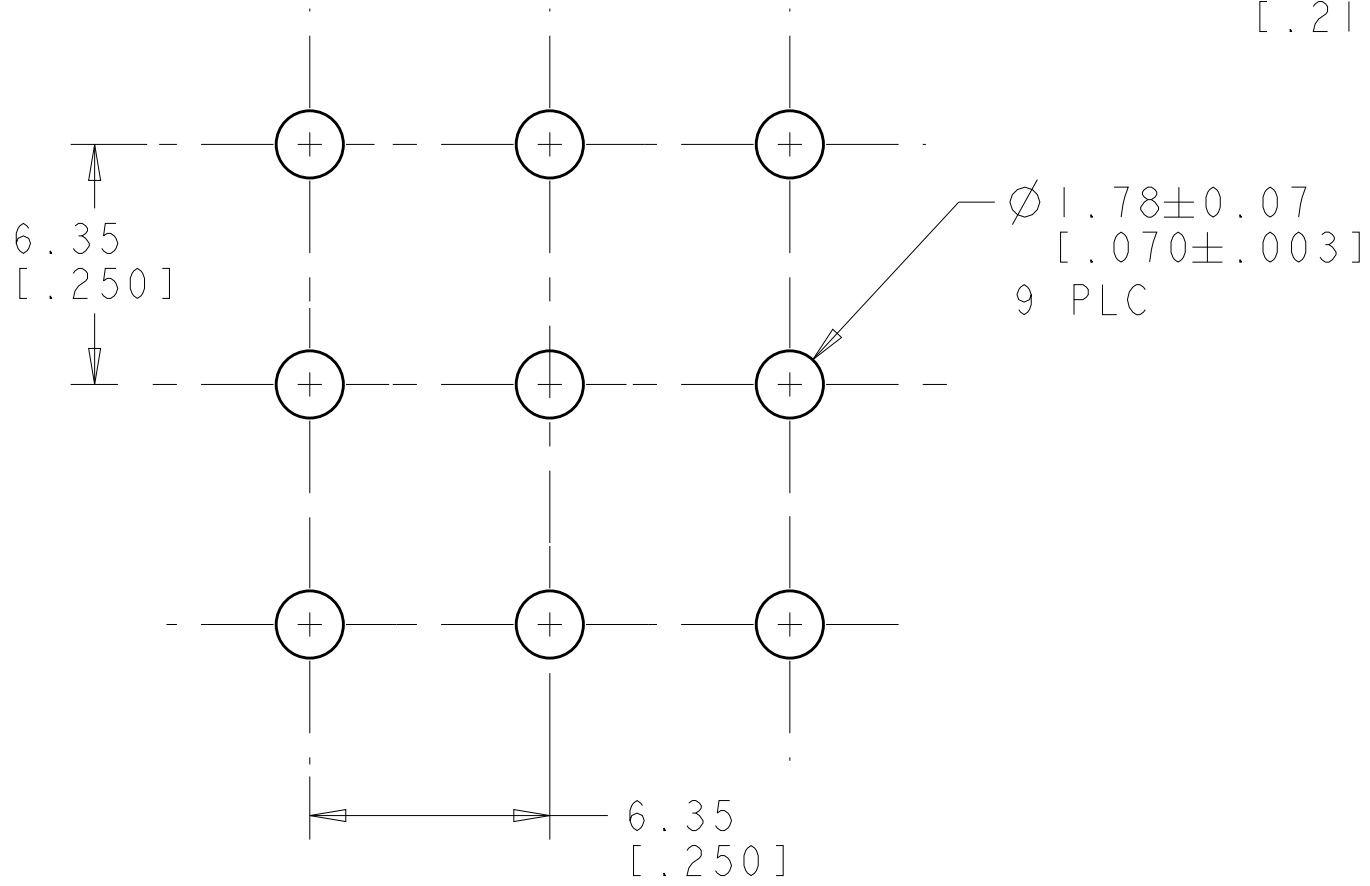
| LOC |  | DIST |     | REVISIONS                 |           |     |      |  |
|-----|--|------|-----|---------------------------|-----------|-----|------|--|
| CM  |  | P    | LTR | DESCRIPTION               | DATE      | DWN | APVD |  |
|     |  |      | TI  | REVISED PER ECR-12-011660 | 24JAN2013 | KH  | TM   |  |
|     |  |      |     |                           |           |     |      |  |
|     |  |      |     |                           |           |     |      |  |
|     |  |      |     |                           |           |     |      |  |



1. PARTS COMPLY TO AMP SOLDERABILITY SPECIFICATION 109-11-3.
2. CONTACT IS PLATED OVERALL WITH 0.00127 [.000050] NICKEL, THEN 0.00076 [.000030] GOLD OVER CONTACT LENGTH INDICATED AND TIN LEAD ON SOLDER TAIL END.
3. MATES WITH HOUSING 480706.
4. CIRCUIT IDENTIFICATION CHARACTERS ARE ADJACENT TO THE INDICATED CAVITIES, BUT LOCATION AND ORIENTATION MAY DIFFER FROM PRINT.
5. CONTACT IS PLATED OVERALL WITH 0.00127 [.000050] NICKEL, THEN 0.00076 [.000030] GOLD OVER CONTACT LENGTH INDICATED AND MATTE TIN ON SOLDER TAIL END.
6. DIMENSIONS IN BRACKETS ARE IN INCHES.
7. SUPERSEDED BY 350586-4

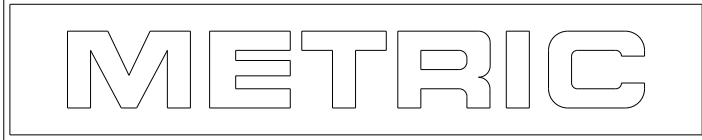


3 DIMENSIONAL MODEL  
SCALE 4:1



RECOMMENDED MOUNTING HOLE PATTERN  
FOR 1.57 [.062] THICK P.C. BOARD

|                                 |                            |             |
|---------------------------------|----------------------------|-------------|
| PHOSPOR BRONZE, GOLD 5          | NYLON, UL94V-2,NATURAL     | 350586-4    |
| 7 PHOSPOR BRONZE, GOLD 2        | NYLON, UL94V-2,NATURAL     | 350586-2    |
| PHOSPOR BRONZE, PRE-TIN         | NYLON, UL94V-2,NATURAL     | 350586-1    |
| PIN CONTACT MATERIAL AND FINISH | HOUSING MATERIAL AND COLOR | PART NUMBER |



|  |  |   |  |
|--|--|---|--|
| THIS DRAWING IS A CONTROLLED DOCUMENT. |  | DWN<br>K. WHITAKER<br>CHK<br>S. RIDGILL<br>APVD<br>S. RIDGILL | 19JULY2005<br>19JULY2005<br>19JULY2005 |
| DIMENSIONS:<br>mm[INCHES]              | TOLERANCES UNLESS<br>OTHERWISE SPECIFIED:                                      | PRODUCT SPEC  | NAME                                   |
|  | 0 PLC ±<br>1 PLC ±<br>2 PLC ±0.13(.005)<br>3 PLC ±<br>4 PLC ±<br>ANGLES ±0°30' | APPLICATION SPEC  |  |
| MATERIAL<br>SEE TABLE                  | FINISH<br>SEE TABLE  | WEIGHT  | SIZE                                   |
| CUSTOMER DRAWING                       |  | SCALE 5:1   | SHEET 1 OF 1                           |



TE Connectivity

PIN HEADER ASSEMBLY,  
9 CIRCUIT,  
UNIVERSAL MATE-N-LOK(TM)

A100779C=350586