

TIN LEAD PART NUMBER

Part
number

HM1L52ZDP499H6P

LEAD FREE PART NUMBER

Part
number

HM1L52ZDP499H6PLF

TABLE-1

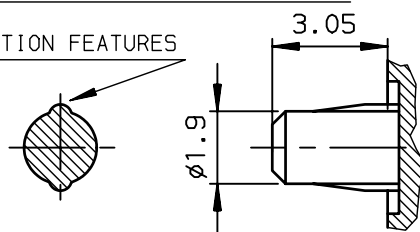
	CONTACT CODE		QTE
	DIM-P	DIM-D	
01	5.00		01
02	5.75		-
03	6.50		51
04	7.25		08
19	8.00		--

FIGURE-1

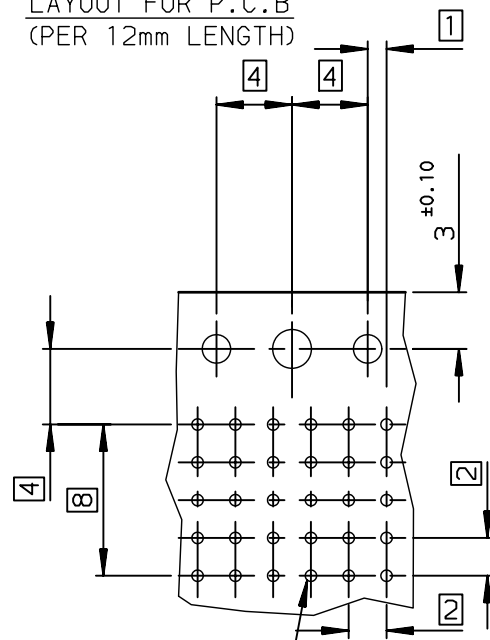
	1	2	3	4	5	6	7	8	9	10	11	12
E	03	03	03	03	03	03	03	03	03	03	03	03
D	03	03	03	03	03	03	03	03	03	03	03	03
C	03	03	03	03	03	03	03	03	03	03	03	03
B	03	03	03	03	03	03	03	03	03	03	03	03
A	04	04	04	03	03	01	03	04	04	04	04	04

DETAIL OF FORCE-FIT PEGS

RETENTION FEATURES

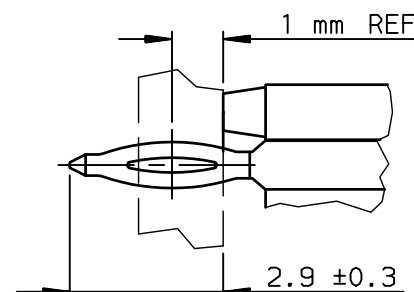


LAYOUT FOR P.C.B
(PER 12mm LENGTH)



Hole according to product spec
GS-12-445 (for press-fit) , —
GS-12-446 (for STB)

DETAIL-1: PRESS-FIT PIN



SPECIFIC DATAS: SELECTIVE CONTACT LOADING

NOTE-2: FLAT ROCK INSERTION TOOLING, ON ALL THIS SURFACE

NOTE-3: EYE OF THE NEEDLE PRESS FIT PIN TYPE

NOTE-4: REAR CENTRAL SUPPORT FOR BETTER ASSY ON PCB

NOTE-5: IF SUFFIX "P" IS ADDED IN P/N PACKAGING IS IN TRAYS
BUT CONNECTOR MARKING IS WITHOUT "P"

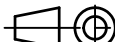


EXAMPLE: HM1XXXXXXXXXH6P, MARKED HM1XXXXXXXXXH6

rev	ecn no	dr	date
A	LS06-0019	MLE	2006/03/2
B	LS06-0097	LGO	2006/07/2
C	LS07-0184	MLE	2007/07/2
-	-	-	-
-	-	-	-
-	-	-	-
-	-	-	-

GENERAL CHARACTERISTICS AND ROHS INFORMATIONS:

SEE PRODUCT SPECIFICATION GS-12-445

European Views

www.fciconnect.com			surface ISO 1302 ✓		tolerance std ISO 406 ISO 1101		projection 		mm 		
			TOLERANCES UNLESS OTHERWISE SPECIFIED								
Dr	LENOIR	26/08/32	ANGULAR	LINEAR	0.X	±0.1	size A3	Scale 2.5			
Eng	LENOIR	2006/03/27			0.XX	±0.1					
Chr	LEGARE	2006/03/27			0.XX' ±2'	0.XXX		±0.1	ECN		LS07-0184
Appr	LEGARE	2006/03/27	Product family				METRAL		Spec ref -		
			title METRAL RA HDR 5 ROW PFIT 2MOD - Specific loading				dwg no C-8626-11310			Rev. C	
catalog no			-				CUSTOMER		sheet 1 of 1		