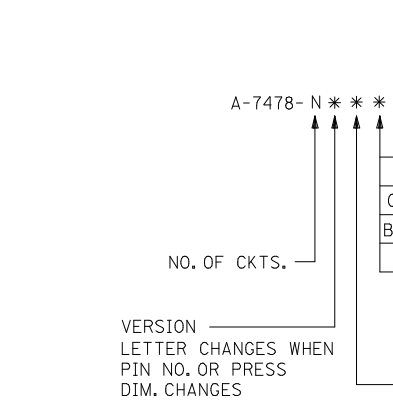
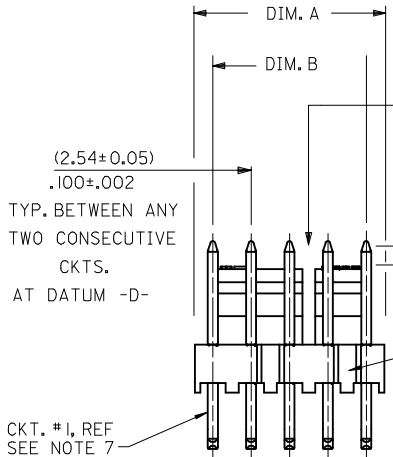
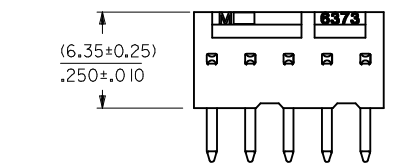


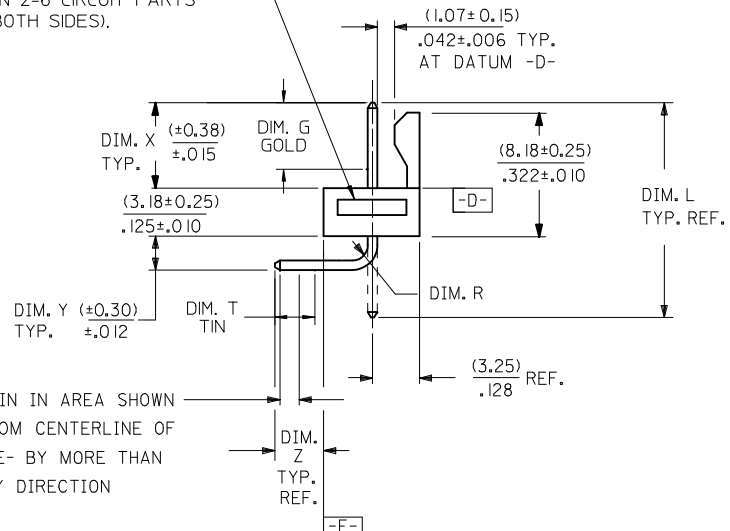
	13	12	11	10	9	8	7	6	5	4	3	2	1
28	(71.12 / 70.61) 2.800 / 2.780	(68.58 ± 0.25) 2.700 ± .010	4 , 5 24 , 25										
27	(68.58 / 68.07) 2.700 / 2.680	(66.04 ± 0.25) 2.600 ± .010	4 , 5 24 , 25										
26	(66.04 / 65.53) 2.600 / 2.580	(63.50 ± 0.25) 2.500 ± .010	4 , 5 20 , 21										
25	(63.50 / 62.99) 2.500 / 2.480	(60.96 ± 0.25) 2.400 ± .010	4 , 5 20 , 21										
24	(60.96 / 60.45) 2.400 / 2.380	(58.42 ± 0.25) 2.300 ± .010	4 , 5 20 , 21										
23	(58.42 / 57.96) 2.300 / 2.282	(55.88 ± 0.23) 2.200 ± .009	4 , 5 20 , 21										
22	(55.88 / 55.42) 2.200 / 2.182	(53.34 ± 0.23) 2.100 ± .009	4 , 5 16 , 17										
21	(53.34 / 52.88) 2.100 / 2.082	(50.80 ± 0.23) 2.000 ± .009	4 , 5 16 , 17										
20	(50.80 / 50.34) 2.000 / 1.982	(48.26 ± 0.23) 1.900 ± .009	4 , 5 16 , 17										
19	(48.26 / 47.80) 1.900 / 1.882	(45.72 ± 0.23) 1.800 ± .009	4 , 5 16 , 17										
18	(45.72 / 45.31) 1.800 / 1.784	(43.18 ± 0.20) 1.700 ± .008	4 , 5 12 , 13										
17	(43.18 / 42.77) 1.700 / 1.684	(40.64 ± 0.20) 1.600 ± .008	4 , 5 12 , 13										
16	(40.64 / 40.23) 1.600 / 1.584	(38.10 ± 0.20) 1.500 ± .008	4 , 5 12 , 13										
15	(38.10 / 37.69) 1.500 / 1.484	(35.56 ± 0.20) 1.400 ± .008	4 , 5 12 , 13										
14	(35.56 / 35.20) 1.400 / 1.386	(33.02 ± 0.18) 1.300 ± .007	4 , 5 8 , 9										
13	(33.02 / 32.66) 1.300 / 1.286	(30.48 ± 0.18) 1.200 ± .007	4 , 5 8 , 9										
12	(30.48 / 30.12) 1.200 / 1.186	(27.94 ± 0.18) 1.100 ± .007	4 , 5 8 , 9										
11	(27.94 / 27.58) 1.100 / 1.086	(25.40 ± 0.18) 1.000 ± .007	4 , 5 8 , 9										
10	(25.40 / 25.04) 1.000 / .986	(22.86 ± 0.15) .900 ± .006	4 , 5										
9	(22.86 / 22.50) .900 / .886	(20.32 ± 0.15) .800 ± .006	4 , 5										
8	(20.32 / 19.96) .800 / .786	(17.78 ± 0.15) .700 ± .006	4 , 5										
7	(17.78 / 17.42) .700 / .686	(15.24 ± 0.13) .600 ± .005	4 , 5										
6	(15.24 / 14.88) .600 / .586	(12.70 ± 0.13) .500 ± .005	4 , 5										
5	(12.70 / 12.40) .500 / .488	(10.16 ± 0.13) .400 ± .005	NONE										
4	(10.16 / 9.86) .400 / .388	(7.62 ± 0.13) .300 ± .005	NONE										
3	(7.62 / 7.32) .300 / .288	(5.08 ± 0.10) .200 ± .004	NONE										
2	(5.08 / 4.78) .200 / .188	(2.54 ± 0.05) .100 ± .002	NONE										



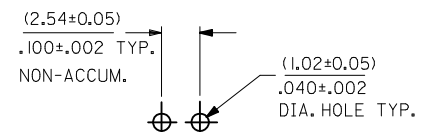
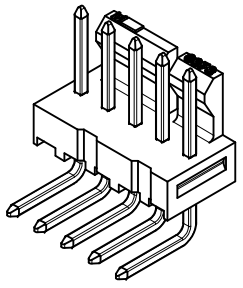
NOTES:

- MATERIAL: NYLON, UL94V-0, COLOR: WHITE
- FINISH:
 (154) = OVERALL TIN: (0.00254)/.000100 MIN., OVERALL NICKEL UNDERPLATE: (0.00127)/.000050 MIN.
 (197) = OVERALL REFLOWED MATTE TIN: 0.00152/.000060 MIN OVER 0.00127/.000050 MIN NICKEL.
 (222) = OVERALL MATTE TIN: (0.00254)/.000100 MIN., OVERALL NICKEL UNDERPLATE: (0.00127)/.000050 MIN.
 (208) = SELECT GOLD: 0.00038/.000015 MIN, SELECT MATTE TIN: 0.00254/.000100, BOTH OVER 0.00127/.000050 MIN NICKEL.
 (228) = SELECT GOLD: 0.00076/.000030 MIN, SELECT MATTE TIN: 0.00254/.000100, BOTH OVER 0.00127/.000050 MIN NICKEL.
 (241) = SELECT GOLD: 0.00051/.000020 MIN, SELECT MATTE TIN: 0.00254/.000100, BOTH OVER 0.00127/.000050 MIN NICKEL.
- PARTS CONFORM TO PRODUCT SPECIFICATION PS-10-07.
- PACKAGING INFORMATION: SEE LEGEND.
- PARTS ARE STACKABLE END TO END ON (2.54)/.100 CENTERS.
- PIN PUSH OUT FORCE: 2 LBS. MIN.
- CIRCUIT ONE DESIGNATION IS USED TO DEFINE VOID LOCATION.
CIRCUIT ONE MAY OR MAY NOT LINE UP WITH CIRCUIT ONE ON THE MATING HOUSING.
- THIS PART CONFORMS TO CLASS B REQUIREMENTS OF COSMETIC SPECIFICATION PS-45499-002.

GROOVE MAY BE PRESENT ON 2-6 CIRCUIT PARTS (BOTH SIDES).



CENTERLINE OF PIN IN AREA SHOWN NOT TO VARY FROM CENTERLINE OF PIN AT DATUM -E- BY MORE THAN (0.13)/.005 IN ANY DIRECTION



RECOMMENDED P.C. BOARD HOLE LAYOUT

SECONDARY OPERATIONS	
CODE	PACKAGE
BLANK	BULK PK-7478-001
T	TUBE PER PK-44743-001

ADD 222 TO NOTE 2	QUALITY SYMBOLS
EC NO: UCP2014-4754	▽=0
DRWN:JDFX	▽=0
CHKD:HKJ	▽=0
APPR:FSM	▽=0
DATE: 2014/05/13	
DATE: 2014/05/16	
REV: AA1	

GENERAL TOLERANCES (UNLESS SPECIFIED)	
	mm
4 PLACES	± .010
3 PLACES	± .010
2 PLACES	± 0.25
1 PLACE	± 0.38
0 PLACE	± .010
ANGULAR ±1/2°	
DRAFT WHERE APPLICABLE MUST REMAIN WITHIN DIMENSIONS	

DIMENSION STYLE	
MM/IN	
DRAWN BY	DATE
GUZIC	1987/07/30
CHECKED BY	DATE
PATEL	1987/07/30
APPROVED BY	DATE
FSMITH	2014/05/16
MATERIAL NO.	DOCUMENT NO.
SEE CHART	SDA-7478
SIZE	
C	

SCALE	DESIGN UNITS	THIRD ANGLE PROJECTION
4:1	INCH	☉
FRICITION LOCK HEADER ASY .100 CL BENT SQ PINS 7478 SERIES DWG		
molex		
SHEET NO.		1 OF 7
THIS DRAWING CONTAINS INFORMATION THAT IS PROPRIETARY TO MOLEX INCORPORATED AND SHOULD NOT BE USED WITHOUT WRITTEN PERMISSION		

	13	12	11	10	9	8	7	6	5	4	3	2	1
J	ENG. NO.	PIN NO.	DIM. L	DIM. X	DIM. Z	DIM. Y	DIM. W	DIM. R	DIM. G	DIM. T			
	A-7478-NA222	2766-41(222) OR 4266-0667	(18.80) .740	(6.71) .264	(3.58) .141	(3.05) .120	90°	(1.17) .046	N/A	OVERALL			
	A-7478-NA241	4266-0666	(18.80) .740	(6.71) .264	(3.58) .141	(3.05) .120	90°	(1.17) .046	(4.57) .180	(3.43) .135			
I	A-7478-NA241T	4266-0666	(18.80) .740	(6.71) .264	(3.58) .141	(3.05) .120	90°	(1.17) .046	(4.57) .180	(3.43) .135			
	A-7478-NA197T	4266-0662	(18.80) .740	(6.71) .264	(3.58) .141	(3.05) .120	90°	(1.17) .046	N/A	OVERALL			
H													
G													
F													
E													
D													
C													

A	SEE SHEET 1 EC NO: UCP2014-4754 DRWN:JFOX 2014/05/13 CHKD:HKIPPER 2014/05/13 APPR:FSMITH 2014/05/16	QUALITY SYMBOLS 	GENERAL TOLERANCES (UNLESS SPECIFIED)		DIMENSION STYLE MM/IN		SCALE ---	DESIGN UNITS INCH	THIRD ANGLE PROJECTION			
					DRAWN BY GUZIC	DATE 1987/07/30	TITLE FRICTION LOCK HEADER ASY .100 CL BENT SQ PINS 7478 SERIES DWG molex					
					CHECKED BY PATEL	DATE 1987/07/30						
					APPROVED BY FSMITH		DATE 2014/05/16	MATERIAL NO. SEE CHART		DOCUMENT NO. SDA-7478	SHEET NO. 2 OF 7	
	AA1	REV	DRAFT WHERE APPLICABLE MUST REMAIN WITHIN DIMENSIONS		ANGULAR ±1/2°		SIZE C		THIS DRAWING CONTAINS INFORMATION THAT IS PROPRIETARY TO MOLEX INCORPORATED AND SHOULD NOT BE USED WITHOUT WRITTEN PERMISSION			

	13	12	11	10	9	8	7	6	5	4	3	2	1	
	A-7478-NA222		A-7478-NA241		A-7478-NA241T		A-7478-NA197T							
J	PART NO.	ENG. NO.	PART NO.	ENG. NO.	PART NO.	ENG. NO.	PART NO.	ENG. NO.	PART NO.	ENG. NO.	PART NO.	ENG. NO.	PART NO.	ENG. NO.
	22-05-302I	A-7478-2A222	22-12-2024	A-7478-2A241	50-29-1710	A-7478-2A241T	50-34-8500	A-7478-2A197T						
	22-05-303I	A-7478-3A222	22-12-2034	A-7478-3A241	50-29-1711	A-7478-3A241T	50-34-8501	A-7478-3A197T						
	22-05-304I	A-7478-4A222	22-12-2044	A-7478-4A241	50-29-1705	A-7478-4A241T	50-34-8502	A-7478-4A197T						
I	22-05-305I	A-7478-5A222	22-12-2054	A-7478-5A241	50-29-1712	A-7478-5A241T								
	22-05-306I	A-7478-6A222	22-12-2064	A-7478-6A241	50-29-1713	A-7478-6A241T								
	22-05-307I	A-7478-7A222	22-12-2074	A-7478-7A241	50-29-1714	A-7478-7A241T								
	22-05-308I	A-7478-8A222	22-12-2084	A-7478-8A241	50-29-1715	A-7478-8A241T								
	22-05-309I	A-7478-9A222	22-12-2094	A-7478-9A241	50-29-1716	A-7478-9A241T								
H	22-05-310I	A-7478-10A222	22-12-2104	A-7478-10A241	50-29-1717	A-7478-10A241T								
	22-05-311I	A-7478-11A222	22-12-2114	A-7478-11A241	50-29-1718	A-7478-11A241T								
	22-05-312I	A-7478-12A222	22-12-2124	A-7478-12A241	50-29-1719	A-7478-12A241T								
	22-05-313I	A-7478-13A222	22-12-2134	A-7478-13A241	50-29-1720	A-7478-13A241T								
	22-05-314I	A-7478-14A222	22-12-2144	A-7478-14A241	50-29-1721	A-7478-14A241T								
G	22-05-315I	A-7478-15A222	22-12-2154	A-7478-15A241	50-29-1722	A-7478-15A241T								
	22-05-316I	A-7478-16A222	22-12-2164	A-7478-16A241	50-29-1723	A-7478-16A241T								
	22-05-317I	A-7478-17A222	22-12-2174	A-7478-17A241	50-29-1724	A-7478-17A241T								
	22-05-318I	A-7478-18A222	22-12-2184	A-7478-18A241	50-29-1725	A-7478-18A241T								
	22-05-319I	A-7478-19A222	22-12-2194	A-7478-19A241	50-29-1726	A-7478-19A241T								
	22-05-320I	A-7478-20A222	22-12-2204	A-7478-20A241	50-29-1727	A-7478-20A241T								
F	22-05-321I	A-7478-21A222	22-12-2214	A-7478-21A241	50-29-1728	A-7478-21A241T								
	22-05-322I	A-7478-22A222	22-12-2224	A-7478-22A241	50-29-1729	A-7478-22A241T								
	22-05-323I	A-7478-23A222	22-12-2234	A-7478-23A241	50-29-1730	A-7478-23A241T								
	22-05-324I	A-7478-24A222	22-12-2244	A-7478-24A241	50-29-1731	A-7478-24A241T								
	22-05-325I	A-7478-25A222	22-12-2254	A-7478-25A241	50-29-1732	A-7478-25A241T								
	22-05-326I	A-7478-26A222	22-12-2264	A-7478-26A241	50-29-1733	A-7478-26A241T								
E	22-05-327I	A-7478-27A222	22-12-2274	A-7478-27A241	50-29-1734	A-7478-27A241T								
	22-05-328I	A-7478-28A222	22-12-2284	A-7478-28A241	50-29-1735	A-7478-28A241T								

SEE SHEET 1 EC NO: UCP2014-4754 DRWN:JDFX 2014/05/13 CHKD:MK/PPR 2014/05/13 APPR:FSM/TH 2014/05/16	QUALITY SYMBOLS = 0 = 0 = 0	GENERAL TOLERANCES (UNLESS SPECIFIED)		DIMENSION STYLE MM/IN	SCALE ---	DESIGN UNITS INCH	THIRD ANGLE PROJECTION
		4 PLACES ± --- ± --- 3 PLACES ± --- ± .010 2 PLACES ± 0.25 ± .015 1 PLACE ± 0.38 ± --- 0 PLACE ± --- ± ---	mm INCH ± --- ± --- ± .010 ± .015 ± --- ± --- ± --- ± ---	DRAWN BY DATE GUZIC 1987/07/30	TITLE FRICITION LOCK HEADER ASY .100 CL BENT SQ PINS 7478 SERIES DWG		
		APPROVED BY DATE FSMITH 2014/05/16		MATERIAL NO. SEE CHART	DOCUMENT NO. SDA-7478	SHEET NO. 3 OF 7	
		DRAFT WHERE APPLICABLE MUST REMAIN WITHIN DIMENSIONS		THIS DRAWING CONTAINS INFORMATION THAT IS PROPRIETARY TO MOLEX INCORPORATED AND SHOULD NOT BE USED WITHOUT WRITTEN PERMISSION			

	13	12	11	10	9	8	7	6	5	4	3	2	1
J	ENG. NO.	PIN NO.	DIM. L	DIM. X	DIM. Z	DIM. Y	DIM. W	DIM. R	DIM. G	DIM. T			
	A-7478-NA228	42663-0664	(18.80) .740	(6.71) .264	(3.58) .141	(3.05) .120	90°	(1.17) .046	(4.57) .180	(3.43) .135			
	A-7478-NE197	42663-0742	(19.81) .780	(7.75) .305	(3.56) .140	(3.05) .120	90°	(1.17) .046	N/A	OVERALL			
I	A-7478-NF197	42663-0622	(18.29) .720	(6.73) .265	(2.92+.25) .115±.010	(3.18) .125 REF.	90°	(1.17) .046	N/A	OVERALL			
	A-7478-NH197	42663-0482	(16.51) .650	(7.49) .295	(2.69) .106	(0.64) .025	90°	(.64) .025	N/A	OVERALL			
	A-7478-NM208	42663-0564	(17.53) .690	(7.57) .298	(3.63) .143	(0.64) .025	90°	(.64) .025	(5.08) .200	(3.43) .135			
H	A-7478-NA154	42663-0668	(18.80) .740	(6.71) .264	(3.58) .141	(3.05) .120	90°	(1.17) .046	N/A	OVERALL			
	A-7478-ANE197	42663-0742	(19.81) .780	(7.75) .305	(3.56) .140	(3.05) .120	90°	(1.17) .046	N/A	OVERALL			
	A-7478-NM197	42663-0562	(17.53) .690	(7.57) .298	(3.63) .143	(.64) .025	90°	(.64) .025	N/A	OVERALL			
G	A-7478-NH228	42663-0483	(16.51) .650	(7.49) .295	(2.69) .106	(.64) .025	90°	(.64) .025	(5.08) .200	(5.08) .200			
	A-7478-NN197	42663-0662	(18.80) .740	(6.71) .264	(3.58) .141	(3.05) .120	90°	(1.17) .046	N/A	OVERALL			
F	A-7478-NP197	42663-1142	(24.89) .980	(6.60) .260	(9.73) .383	(3.05) .120	90°	(1.17) .046	N/A	OVERALL			
E													
D													
C													

B	SEE SHEET 1 EC NO: UCP2014-4754 DRWN:JDOX 2014/05/13 CHKD:MKIPPER 2014/05/13 APPR:FSMLTH 2014/05/16	QUALITY SYMBOLS ▽=0 ▽=0 ▽=0	GENERAL TOLERANCES (UNLESS SPECIFIED) mm INCH 4 PLACES ± --- ± --- 3 PLACES ± --- ± .010 2 PLACES ± 0.25 ± .015 1 PLACE ± 0.38 ± --- 0 PLACE ± --- ± ---	DIMENSION STYLE MM/IN	SCALE ---	DESIGN UNITS INCH	THIRD ANGLE PROJECTION	DRAWN BY GUZIC	DATE 1987/07/30	CHECKED BY PATEL	DATE 1987/07/30	APPROVED BY FSMITH	DATE 2014/05/16	TITLE FRICTION LOCK HEADER ASY .100 CL BENT SQ PINS 7478 SERIES DWG
A	AA1	REV	ANGULAR ±1/2° DRAFT WHERE APPLICABLE MUST REMAIN WITHIN DIMENSIONS	SIZE C	THIS DRAWING CONTAINS INFORMATION THAT IS PROPRIETARY TO MOLEX INCORPORATED AND SHOULD NOT BE USED WITHOUT WRITTEN PERMISSION									

	13	12	11	10	9	8	7	6	5	4	3	2	1	
	A-7478-NA228		A-7478-NE197		A-7478-NF197		A-7478-NH197		A-7478-NM208		A-7478-NA154			
J	PART NO.	ENG. NO.	PART NO.	ENG. NO.	PART NO.	ENG. NO.	PART NO.	ENG. NO.	PART NO.	ENG. NO.	PART NO.	ENG. NO.	PART NO.	ENG. NO.
	22-12-2026	A-7478-2A228	22-05-8025	A-7478-2E197		A-7478-2F197	S	22-05-8020	A-7478-2H197	S		A-7478-2M208	50-30-4424	A-7478-2A154
	22-12-2036	A-7478-3A228		A-7478-3E197		A-7478-3F197	S	22-05-8030	A-7478-3H197	S		A-7478-3M208	50-30-4434	A-7478-3A154
	22-12-2046	A-7478-4A228		A-7478-4E197		A-7478-4F197	S	22-05-8040	A-7478-4H197	S		A-7478-4M208	50-30-4444	A-7478-4A154
I	22-12-2056	A-7478-5A228	22-05-8055	A-7478-5E197	22-05-9058	A-7478-5F197	S	22-05-8050	A-7478-5H197	S		A-7478-5M208		
	22-12-2066	A-7478-6A228		A-7478-6E197		A-7478-6F197	S	22-05-8060	A-7478-6H197	S		A-7478-6M208		
	22-12-2076	A-7478-7A228		A-7478-7E197		A-7478-7F197	S	22-05-8070	A-7478-7H197	S		A-7478-7M208		
	22-12-2086	A-7478-8A228		A-7478-8E197		A-7478-8F197	S	22-05-8080	A-7478-8H197	S		A-7478-8M208		
	22-12-2096	A-7478-9A228		A-7478-9E197		A-7478-9F197	S	22-05-8090	A-7478-9H197	S		A-7478-9M208		
H	22-12-2106	A-7478-10A228		A-7478-10E197		A-7478-10F197	S	22-05-8100	A-7478-10H197	S		A-7478-10M208		
	22-12-2116	A-7478-11A228		A-7478-11E197		A-7478-11F197	S	22-05-8110	A-7478-11H197	S		A-7478-11M208		
	22-12-2126	A-7478-12A228		A-7478-12E197		A-7478-12F197	S	22-05-8120	A-7478-12H197	S	22-12-2123	A-7478-12M208		
	22-12-2136	A-7478-13A228		A-7478-13E197		A-7478-13F197	S	22-05-8130	A-7478-13H197	S		A-7478-13M208		
	22-12-2146	A-7478-14A228		A-7478-14E197		A-7478-14F197	S	22-05-8140	A-7478-14H197	S		A-7478-14M208		
	22-12-2156	A-7478-15A228		A-7478-15E197		A-7478-15F197	S	22-05-8150	A-7478-15H197	S		A-7478-15M208		
G	22-12-2166	A-7478-16A228		A-7478-16E197		A-7478-16F197	S	22-05-8160	A-7478-16H197	S		A-7478-16M208		
	22-12-2176	A-7478-17A228		A-7478-17E197		A-7478-17F197	S	22-05-8170	A-7478-17H197	S		A-7478-17M208		
	22-12-2186	A-7478-18A228		A-7478-18E197		A-7478-18F197	S	22-05-8180	A-7478-18H197	S		A-7478-18M208		
	22-12-2196	A-7478-19A228		A-7478-19E197		A-7478-19F197	S	22-05-8190	A-7478-19H197	S		A-7478-19M208		
	22-12-2206	A-7478-20A228		A-7478-20E197		A-7478-20F197	S	22-05-8200	A-7478-20H197	S		A-7478-20M208		
F	22-12-2216	A-7478-21A228		A-7478-21E197		A-7478-21F197	S	22-05-8210	A-7478-21H197	S		A-7478-21M208		
	22-12-2226	A-7478-22A228		A-7478-22E197		A-7478-22F197	S	22-05-8220	A-7478-22H197	S		A-7478-22M208		
	22-12-2236	A-7478-23A228		A-7478-23E197		A-7478-23F197	S	22-05-8230	A-7478-23H197	S		A-7478-23M208		
	22-12-2246	A-7478-24A228		A-7478-24E197		A-7478-24F197	S	22-05-8240	A-7478-24H197	S		A-7478-24M208		
	22-12-2256	A-7478-25A228		A-7478-25E197		A-7478-25F197	S	22-05-8250	A-7478-25H197	S		A-7478-25M208		
	22-12-2266	A-7478-26A228		A-7478-26E197		A-7478-26F197	S	22-05-8260	A-7478-26H197	S		A-7478-26M208		
E	22-12-2276	A-7478-27A228		A-7478-27E197		A-7478-27F197	S	22-05-8270	A-7478-27H197	S		A-7478-27M208		
	22-12-2286	A-7478-28A228		A-7478-28E197		A-7478-28F197	S	22-05-8280	A-7478-28H197	S		A-7478-28M208		

SEE SHEET 1 EC NO: UCP2014-4754 DRWN: JDOX CHKD: JHK/PPR APPR: FSM/TH 2014/05/13 2014/05/13 2014/05/16	QUALITY SYMBOLS 	GENERAL TOLERANCES (UNLESS SPECIFIED)		DIMENSION STYLE MM/IN		SCALE ---	DESIGN UNITS INCH	THIRD ANGLE PROJECTION		
				DRAWN BY GUZIC	DATE 1987/07/30	TITLE FRICTION LOCK HEADER ASY .100 CL BENT SQ PINS 7478 SERIES DWG				
				CHECKED BY PATEL	DATE 1987/07/30	APPROVED BY FSM/TH				
				MATERIAL NO. SEE CHART		DATE 2014/05/16		DOCUMENT NO. SDA-7478		SHEET NO. 5 OF 7
DRAFT WHERE APPLICABLE MUST REMAIN WITHIN DIMENSIONS										
THIS DRAWING CONTAINS INFORMATION THAT IS PROPRIETARY TO MOLEX INCORPORATED AND SHOULD NOT BE USED WITHOUT WRITTEN PERMISSION										

13		12		11		10		9		8		7		6		5		4		3		2		1			
PART NO.		ENG. NO.		PART NO.		ENG. NO.		PART NO.		ENG. NO.		PART NO.		ENG. NO.		PART NO.		ENG. NO.		PART NO.		ENG. NO.		PART NO.		ENG. NO.	
								A-7478-ANE197				A-7478-NM197															
									A-7478-A2E197			22-12-4028		A-7478-2M197													
									A-7478-A3E197			22-12-4038		A-7478-3M197													
									A-7478-A4E197			22-12-4048		A-7478-4M197													
								22-05-3055	A-7478-A5E197			22-12-4058		A-7478-5M197													
									A-7478-A6E197			22-12-4068		A-7478-6M197													
								22-05-3075	A-7478-A7E197			22-12-4078		A-7478-7M197													
									A-7478-A8E197			22-12-4088		A-7478-8M197													
									A-7478-A9E197			22-12-4098		A-7478-9M197													
									A-7478-A10E197			22-12-4108		A-7478-10M197													
									A-7478-A11E197			22-12-4118		A-7478-11M197													
									A-7478-A12E197			22-12-4128		A-7478-12M197													
									A-7478-A13E197			22-12-4138		A-7478-13M197													
									A-7478-A14E197			22-12-4148		A-7478-14M197													
									A-7478-A15E197			22-12-4158		A-7478-15M197													
									A-7478-A16E197			22-12-4168		A-7478-16M197													
									A-7478-A17E197			22-12-4178		A-7478-17M197													
									A-7478-A18E197			22-12-4188		A-7478-18M197													
								22-05-3195	A-7478-A19E197			22-12-4198		A-7478-19M197													
									A-7478-A20E197			22-12-4208		A-7478-20M197													
									A-7478-A21E197			22-12-4218		A-7478-21M197													
									A-7478-A22E197			22-12-4228		A-7478-22M197													
									A-7478-A23E197			22-12-4238		A-7478-23M197													
									A-7478-A24E197			22-12-4248		A-7478-24M197													
									A-7478-A25E197			22-12-4258		A-7478-25M197													
									A-7478-A26E197			22-12-4268		A-7478-26M197													
									A-7478-A27E197			22-12-4278		A-7478-27M197													
									A-7478-A28E197			22-12-4288		A-7478-28M197													

SEE SHEET 1 EC NO: UCP2014-4754 DRWN: JDOX CHKD: HKLIPPER APPR: FSMITH	QUALITY SYMBOLS 	GENERAL TOLERANCES (UNLESS SPECIFIED)		DIMENSION STYLE MM/IN	SCALE ---	DESIGN UNITS INCH	THIRD ANGLE PROJECTION
		4 PLACES ± --- ± ---	3 PLACES ± --- ± .010	DRAWN BY GUZIC	DATE 1987/07/30	TITLE FRICITION LOCK HEADER ASY .100 CL BENT SQ PINS 7478 SERIES DWG	
		2 PLACES ± 0.25 ± .015	1 PLACE ± 0.38 ± ---	CHECKED BY PATEL	DATE 1987/07/30		
		0 PLACE ± --- ± ---	APPROVED BY FSMITH	DATE 2014/05/16	MATERIAL NO. SEE CHART		
ANGULAR ±1/2°		DOCUMENT NO. SDA-7478		SHEET NO. 6 OF 7			
DRAFT WHERE APPLICABLE MUST REMAIN WITHIN DIMENSIONS		THIS DRAWING CONTAINS INFORMATION THAT IS PROPRIETARY TO MOLEX INCORPORATED AND SHOULD NOT BE USED WITHOUT WRITTEN PERMISSION					

A-7478-NH228				A-7478-NN197		A-7478-NP197					
PART NO.	ENG. NO.	PART NO.	ENG. NO.	PART NO.	ENG. NO.			PART NO.	ENG. NO.	PART NO.	ENG. NO.
22-16-3026	A-7478-2H228				A-7478-2N197	50-29-0033	A-7478-2P197				
22-16-3036	A-7478-3H228				A-7478-3N197		A-7478-3P197				
22-16-3046	A-7478-4H228				A-7478-4N197		A-7478-4P197				
22-16-3056	A-7478-5H228				A-7478-5N197	22-05-8053	A-7478-5P197				
22-16-3066	A-7478-6H228				A-7478-6N197		A-7478-6P197				
22-16-3076	A-7478-7H228				A-7478-7N197		A-7478-7P197				
22-16-3086	A-7478-8H228				A-7478-8N197		A-7478-8P197				
22-16-3096	A-7478-9H228				A-7478-9N197		A-7478-9P197				
22-16-3106	A-7478-10H228				A-7478-10N197		A-7478-10P197				
22-16-3116	A-7478-11H228				A-7478-11N197		A-7478-11P197				
22-16-3126	A-7478-12H228				A-7478-12N197		A-7478-12P197				
22-16-3136	A-7478-13H228				A-7478-13N197		A-7478-13P197				
22-16-3146	A-7478-14H228				A-7478-14N197		A-7478-14P197				
22-16-3156	A-7478-15H228				A-7478-15N197		A-7478-15P197				
22-16-3166	A-7478-16H228				A-7478-16N197		A-7478-16P197				
22-16-3176	A-7478-17H228			22-59-5176	A-7478-17N197		A-7478-17P197				
22-16-3186	A-7478-18H228				A-7478-18N197		A-7478-18P197				
22-16-3196	A-7478-19H228				A-7478-19N197		A-7478-19P197				
22-16-3206	A-7478-20H228				A-7478-20N197		A-7478-20P197				
22-16-3216	A-7478-21H228				A-7478-21N197		A-7478-21P197				
22-16-3226	A-7478-22H228				A-7478-22N197		A-7478-22P197				
22-16-3236	A-7478-23H228				A-7478-23N197		A-7478-23P197				
22-16-3246	A-7478-24H228				A-7478-24N197		A-7478-24P197				
22-16-3256	A-7478-25H228				A-7478-25N197		A-7478-25P197				
22-16-3266	A-7478-26H228				A-7478-26N197		A-7478-26P197				
22-16-3276	A-7478-27H228				A-7478-27N197		A-7478-27P197				
22-16-3286	A-7478-28H228				A-7478-28N197		A-7478-28P197				

SEE SHEET 1 EC NO: UCP2014-4754 DRWN:JDFX CHKD:MKIPPR APPR:FSMITH	2014/05/13 2014/05/13 2014/05/16	QUALITY SYMBOLS 	GENERAL TOLERANCES (UNLESS SPECIFIED)		DIMENSION STYLE	SCALE	DESIGN UNITS	THIRD ANGLE PROJECTION
					MM/IN	---	INCH	
					DRAWN BY	DATE	TITLE	
					CHECKED BY	DATE		
		ANGULAR ±1/2°		MATERIAL NO.	DOCUMENT NO.		SHEET NO.	
AA1		DRAFT WHERE APPLICABLE MUST REMAIN WITHIN DIMENSIONS		SEE CHART		SDA-7478		7 OF 7
THIS DRAWING CONTAINS INFORMATION THAT IS PROPRIETARY TO MOLEX INCORPORATED AND SHOULD NOT BE USED WITHOUT WRITTEN PERMISSION								