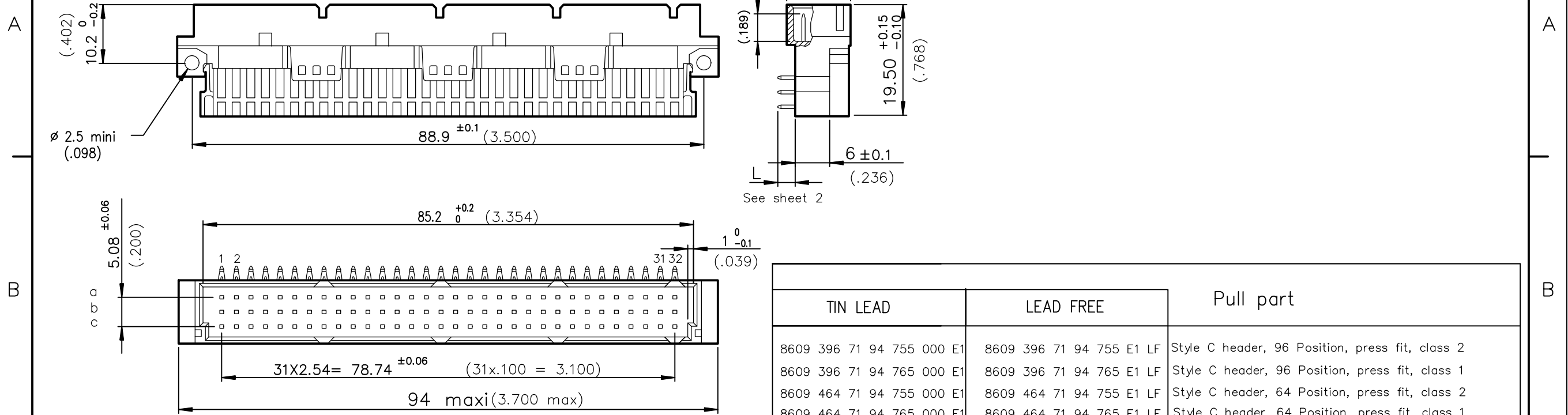


DIMENSIONS mm (inches)

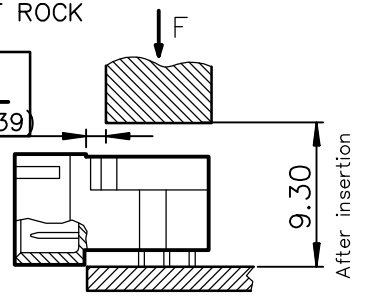


TIN LEAD	LEAD FREE	Pull part
8609 396 71 94 755 000 E1	8609 396 71 94 755 E1 LF	Style C header, 96 Position, press fit, class 2
8609 396 71 94 765 000 E1	8609 396 71 94 765 E1 LF	Style C header, 96 Position, press fit, class 1
8609 464 71 94 755 000 E1	8609 464 71 94 755 E1 LF	Style C header, 64 Position, press fit, class 2
8609 464 71 94 765 000 E1	8609 464 71 94 765 E1 LF	Style C header, 64 Position, press fit, class 1

Application specific part-numbers: See sheet 2

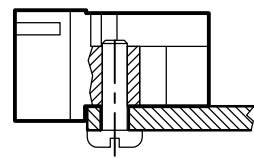
METHOD OF INSERTION ON THE PCB = FLAT ROCK

ATTENTION:
Minimum gap: 1mm (.039)



Recommended accessory :

loaded connectors with less than 64 cts require fixings with self-winding screws part number : 4514327



GENERAL CHARACTERISTICS AND ROHS INFORMATIONS:

SEE DRAWING C-8609-0000C

European Views

www.fciconnect.com		surface ISO 1302	tolerance std ISO 406 ISO 1101	projection	mm
		TOLERANCES UNLESS OTHERWISE SPECIFIED			
Dr	ROUILLARD	1995-04-25	ANGULAR	size A3	Scale 1.5
Eng	TARON	1995-04-25	LINEAR	ECN	I10-0217
Chr	S ALOSIOUS	2010-11-19	0.XX ±2	Product family	DIN 8609
Appr	BIJU K PAUL	2010-11-19	0.XXX ±0.1	Spec ref	-
FCi		title RIGHT ANGLE HEADER - STYLE C		dwg no	C-8609-0477
		PRESS FIT		Rev.	M
		catalog no		CUSTOMER	sheet 1 of 2

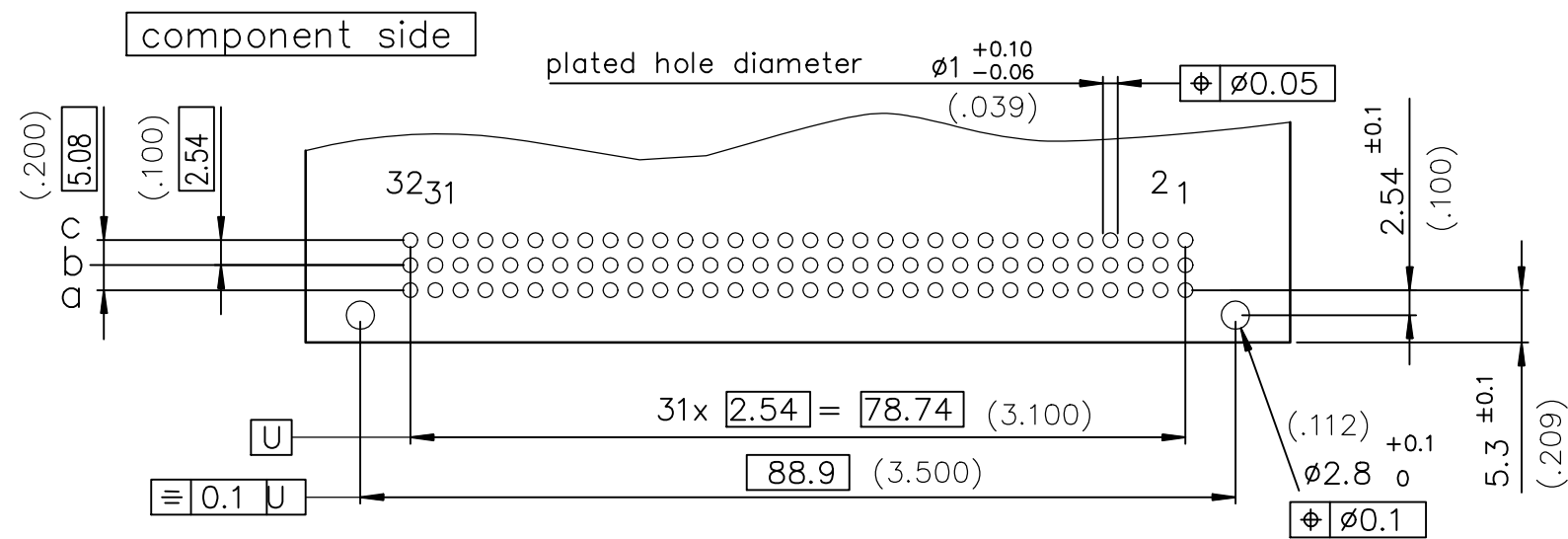
rev	ecn no	dr	date
J	-	ROU	2002-08-30
K	LS05-004	JTA	2005-02-26
L	LS06-0097	LGO	2006-07-25
M	I10-0217	SAL	2010-11-09
-	-	-	-
-	-	-	-
-	-	-	-



Copyright FCi.

PART NUMBER		8609			71		7		5	
PIN OUT										
rows a-b	-----	2	64							
rows a-b-c	-----	3	96							
rows a-c	-----	4	64							
NUMBER OF CONTACTS										
TERMINATION										
L = 2.80 ±0.20 (.110)	-----	short post	-----							94
PERFORMANCE CLASS										
DIN 41612 class 3	-----									4
DIN 41612 class 2	-----									5
DIN 41612 class 1	-----									6
TERMINATION TYPE										
TIN LEAD	-----									000E1
LEAD FREE	-----									E1LF

PCB LAYOUT



GENERAL CHARACTERISTICS AND ROHS INFORMATIONS:

SEE DRAWING C-8609-0000C

European Views

www.fciconnect.com		surface	ISO 1302	tolerance std	ISO 406 ISO 1101	projection	mm	
		TOLERANCES UNLESS OTHERWISE SPECIFIED						
Dr	ROUILLARD	1995-04-25	ANGULAR	0.X	±0.1	size	Scale	
Eng	TARON	1995-04-25	LINEAR	0.XX	±0.1	A3	1.5	
Chr	S ALOSIUS	2010-11-19	0.XX' ±2'	0.XXX	±0.1	ECN	I10-0217	
Appr	BIJU K PAUL	2010-11-19	Product family	DIN 8609		Spec ref	-	
		title			RIGHT ANGLE HEADER - STYLE C		dwg no	Rev.
					PRESS FIT		C-8609-0477	M
		catalog no			-		CUSTOMER	sheet 2 of 2

rev	ecn no	dr	date
J	-	ROU	2002/08/30
K	LS05-004	JTA	2005/02/26
L	LS06-0097	LGO	2006/07/25
M	I10-0217	SAL	2010-11-19
-	-	-	-
-	-	-	-
-	-	-	-



Copyright FCi.

REV F - 2006-04-17