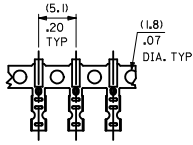
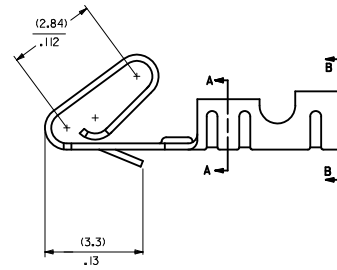
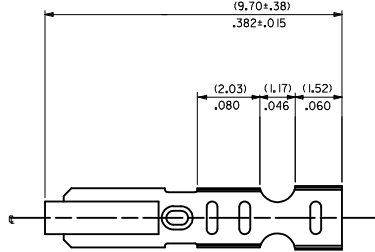
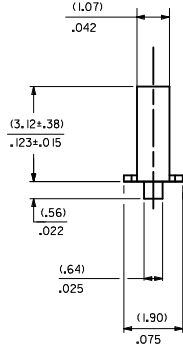
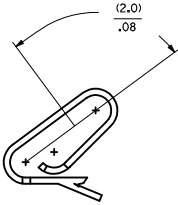


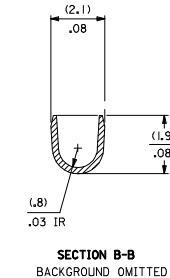
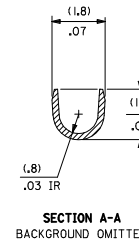
CARRIER VIEW



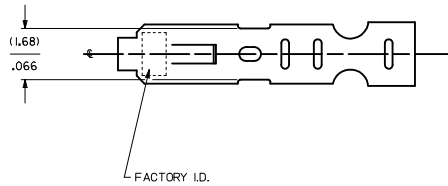
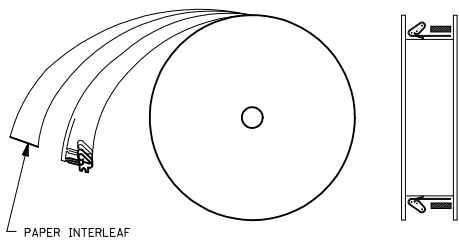
SELECT GOLD LOCATION



- NOTES:
- MATERIAL:
 (0.20)/.008 THICK PHOS BRONZE
 - FINISH:
 222 - OVERALL MATTE TIN: (0.00254)/.000100 MIN. TIN OVER (0.00127)/.000050 MIN NICKEL
 P909 - OVERALL HOT TIN DIP: (0.00254)/.000100 MIN.
 231 - SELECT GOLD: (0.00127)/.000050 MIN.
 SELECT MATTE TIN: (0.00254)/.000100 MIN.
 OVERALL NICKEL UNDERPLATE: (0.00127)/.000050 MIN.
 550 - SELECT GOLD: (0.00038)/.000015 MIN.
 OVERALL GOLD FLASH: (0.00005)/.000002 MIN.
 OVERALL NICKEL UNDERPLATE: (0.00076)/.000030 MIN.
 555- SELECT GOLD (0.00038)/.000015 MIN.
 OVERALL NICKEL UNDERPLATE: (0.00076)/.000030
 558 - SELECT GOLD: (0.00076)/.000030 MIN.
 OVERALL GOLD FLASH: (0.00005)/.000002 MIN.
 OVERALL NICKEL UNDERPLATE: (0.00127)/.000050 MIN.
 561- SELECT GOLD (0.00076)/.000030 MIN.
 OVERALL NICKEL UNDERPLATE: (0.00127)/.000050
 - PRODUCT SPEC: PS-10-07
 - PACKAGING SPECIFICATION: LOOSE TERMINALS: PER PK-2759-001
 CHAIN FORM TERMINALS: NONE
 - CRIMP IS FOR 22-30 GA WIRE WITH (1.57)/.062 DIA INSULATION MAX.
 - INSERTION FORCE OF TERMINAL INTO (2.54)/.100 CENTERLINE CONNECTOR IS 2.5 LBS. MAX
 - TERMINAL RETENTION IN HOUSING IS 26.7N / 6LBS MIN. WHEN PULLED AT THE RATE OF (25.4MM)/ 1 INCH PER MINUTE.
 - DIMENSIONS GIVEN ACROSS CENTERLINES ARE SYMMETRICAL ABOUT THOSE CENTERLINES WITHIN HALF THE TOTAL TOLERANCE.
 - THIS PART CONFORMS TO CLASS B REQUIREMENTS OF COSMETIC SPECIFICATION PS-45499-002



WINDING DETAIL A



6459-(***)*
 FORM
 L=LOOSE
 A=CHAIN PER DETAIL A
 PLATING
 SEE NOTE 2

REMOVED 208 PLT EC NO: UCF2012-2810 DRAWN: JAGUILAR 2012/02/27 CHECKED: KIPPER 2012/02/27 APPROVED: FSMITH 2012/03/20	QUALITY SYMBOLS	GENERAL TOLERANCES (UNLESS SPECIFIED)	DIMENSION STYLE	SCALE	DESIGN UNITS	THIRD ANGLE PROJECTION	
	∇=0 ∇=0 ∇=0	mm INCH 4 PLACES ± --- ± --- 3 PLACES ± --- ± .005 2 PLACES ± 0.13 ± .010 1 PLACE ± 0.25 ± --- ANGULAR ±1/2°	MM/IN	DRAWN BY DATE SAMIEC 01/21/92 CHECKED BY DATE PATEL 01/21/92 APPROVED BY DATE FSMITH 2012/03/20	INCH	INCH	TITLE KK (2.54)/.100 CRIMP TERMINAL, 22-30 GA WIRE SAME AS 2759 EXCEPT MATL MOLEX INCORPORATED
	DRAFT WHERE APPLICABLE MUST REMAIN WITHIN DIMENSIONS	MATERIAL NO. SEE CHART	DOCUMENT NO. SD-6459	SHEET NO. 1 OF 2			
	SIZE D	THIS DRAWING CONTAINS INFORMATION THAT IS PROPRIETARY TO MOLEX INCORPORATED AND SHOULD NOT BE USED WITHOUT WRITTEN PERMISSION					

6459-(***)*

PART NO.

ENG. NO.

08-52-0101

6459-(P909)

08-52-0123

6459-(P909)L

08-65-0801

6459-(561)

6459-(561)L

08-52-0118

6459-(222)

6459-(222)L

08-65-0811

6459-(558)

08-65-0812

6459-(558)L

08-65-0815

6459-(555)

08-65-0816

6459-(555)L

08-65-0813

6459-(550)

08-65-0814

6459-(550)L

08-65-0817

6459-(231)

08-65-0818

6459-(231)L

REMOVE 6459-1208 EC NO: UCF2012-2810 G DRAWN: JAGUILAR 2012/02/27 CHYKHAI KIPPER 2012/02/27 APPR: FSMITH 2012/03/20	QUALITY SYMBOLS	GENERAL TOLERANCES (UNLESS SPECIFIED)	DIMENSION STYLE	SCALE	DESIGN UNITS	THIRD ANGLE PROJECTION
	▽=0	mm INCH	MM/IN	1:1	INCH	
	▽=0	4 PLACES ±.005 ±.005	DRAWN BY DATE			TITLE
	▽=0	3 PLACES ±.013 ±.010	CHECKED BY DATE			KK (2.54)/.100 CRIMP TERMINAL, 22-30 GA WIRE SAME AS 2759 EXCEPT MATL
	1 PLACE ±0.25 ±.005	ANGULAR ±1/2°	APPROVED BY DATE			
		DRAFT WHERE APPLICABLE MUST REMAIN WITHIN DIMENSIONS	FSMITH 2012/03/20			
			MATERIAL NO.			
			SEE CHART			
			SIZE D			
			THIS DRAWING CONTAINS INFORMATION THAT IS PROPRIETARY TO MOLEX INCORPORATED AND SHOULD NOT BE USED WITHOUT WRITTEN PERMISSION			

MOLEX INCORPORATED
 DOCUMENT NO. SD-6459
 SHEET NO. 2 OF 2