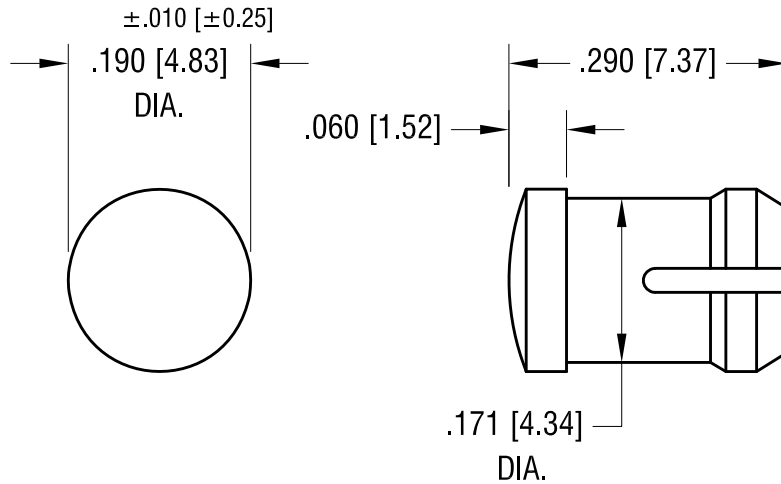


THIS DOCUMENT IS THE PROPERTY OF
KEYSTONE ELECTRONICS CORP. AND
SHALL NOT BE REPRODUCED, DISTRIBUTED
OR USED AS A BASIS FOR MANUFACTURE
WITHOUT PRIOR WRITTEN PERMISSION
FROM KEYSTONE ELECTRONICS CORP.

ACTUAL SIZE



NOTE:

1. MOUNTING: $\pm .002$ [± 0.05]
MOUNTS IN A .171[4.34] DIA. PANEL HOLE
ON .250 [6.35] CENTER.
PANEL THICKNESS .063 [1.60] TO .125 [3.17]
PANEL HOLE SHOULD BE DEBURRED, BUT NOT CHAMFERED.
2. ASSEMBLY:
INSERT LENS THROUGH PANEL HOLE ,
AND INSERT LED INTO LENS

PART NO.	COLOR
8656	RED
8657	GREEN
8658	YELLOW
8659	CLEAR

KEYSTONE ELECTRONICS CORP.			
www.keyelco.com • ASTORIA, N.Y. 11105-2017 • Tel (718) 956-8900			
PART NAME LED ROUND LENS CAP			
MATERIAL POLYCARBONATE			
FINISH -	DRN BY BOONE	DATE 2.9.96	
	APP'D LN	SCALE 5X	
TOLERANCES DECIMAL ANGULAR $\pm 1^\circ$ UNLESS OTHERWISE SPECIFIED	INCH [MM] $\pm .005$ [± 0.13]	CODE C	DWG NO. 8656-8659

10.10.13	CHANGE AS PER ECN 13-098	A
DATE	DESCRIPTION	REV.