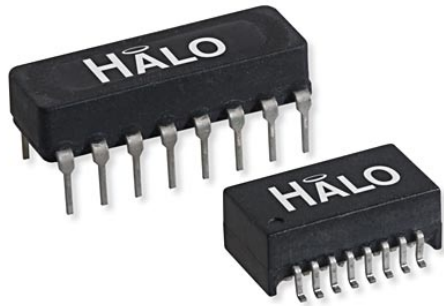


Quad CMC Filters

16 Pin DIP and SMD Package



Product Features:

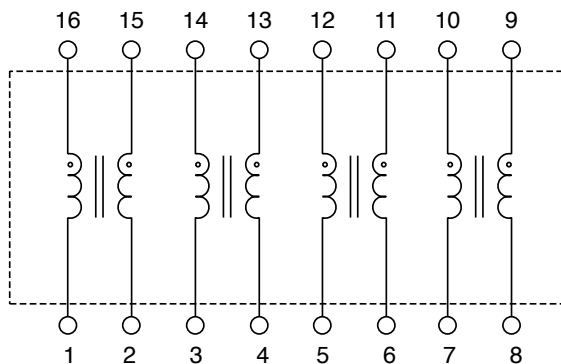
- Standard series of 16 pin quad CMC filters for Data Communications and Telecom applications.
- Operating Temp -40 to +85°C
- Hi Pot: 500Vrms
- Turns Ratio ($\pm 3\%$): 1:1
- UL Recognized Components

Part Number	Package	OCL ($\mu\text{H typ.}$)	LL ($\mu\text{H max.}$)	Cw/w (pF max.)	DCR ($\Omega \text{ max.}$)	Impedance/Freq. Curve (typ.)	Temperature Range
LD01-0756L1RL	DIP	75	0.25	20	0.50	A	0 to +70°C
LD01-1006L1RL	DIP	100	0.25	25	0.65	B	0 to +70°C
LG01-0356N2LF	SMD	35	0.15	15	0.35	C	0 to +70°C
LG01-0956N2LF	SMD	95	0.25	25	0.65	D	-40 to +85°C

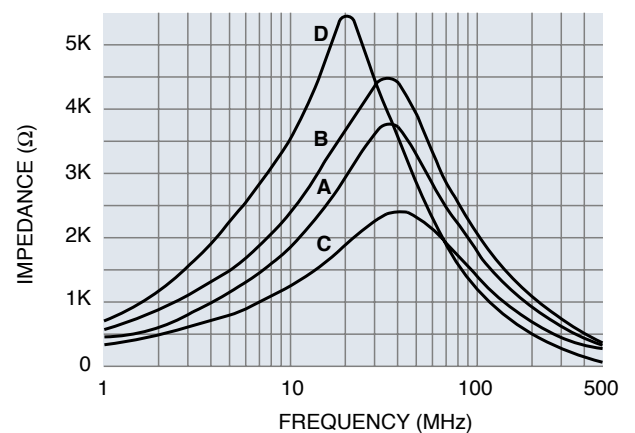
Notes:

1. DIP (through-hole) packages are not recommended for new designs
2. Part numbers with LF suffix are RoHS compliant and PB-Free. Part numbers with RL suffix are RoHS compliant using exemption 7a.

Schematic

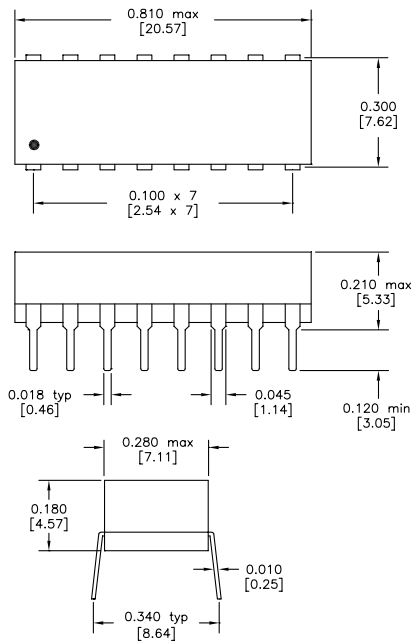


Impedance/Freq. Curve

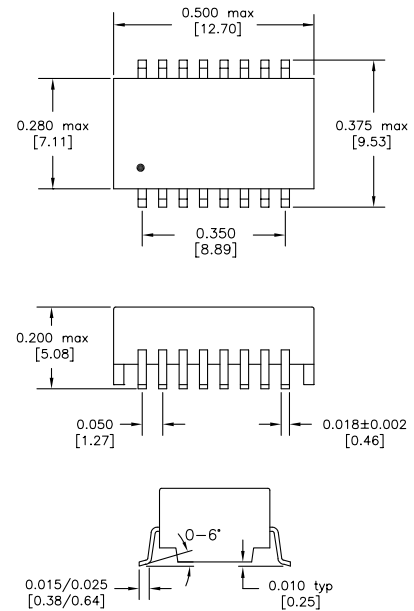


Quad CMC Filters

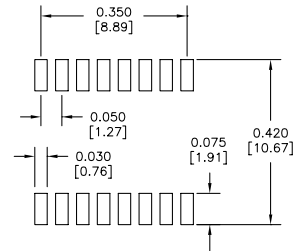
DIP Package (L1)



SMD Package (N2)



Dimensions: inches [mm]
Co-Planarity: 0.004 [0.10]



Recommended
Solder Pad Dimensions

US Patent Numbers for SMD Package
5,656,985 6,297,721 B1
6,297,720 B1 6,320,489 B1
6,344,785 B1 6,662,431 B1



2880 Lakeside Drive #116
Santa Clara, CA 95054
(650) 903-3800
www.haloelectronics.com

HALO® Electronics is a leading supplier of high quality communication magnetics including signal transformers, filters, CMR chokes, PoE power transformers, DC/DC converters, and integrated Ethernet connectors. HALO's leading edge technology solutions are manufactured in ISO9001 and ISO14001 factories offering high quality products at a competitive price.