

ELECTRICAL

RESISTANCE RANGE	SEE CHART
RESISTANCE TOLER.	±5%
NOISE	100 OHM MAX
INSULATION RESISTANCE	100 MEGOHMS AT 500 VDC
DIELECTRIC STRENGTH	900VDC MIN
END RESISTANCE	1 OHM OR 0.1% OF TOTAL

MECHANICAL

STOP STRENGTH	10 LBS MIN
FRICTION	21 OZ.MAX
LIFE	2,000,000 STROKES MIN.

ENVIRONMENTAL

OPERATING TEMPERATURE	-20°C TO +60°C
-----------------------	----------------

NON-STANDARD OPTIONS

RESIS.TOL ±3%
MACHINED SHAFTS
EXTRA TAP
HYBRID ELEMENT
CONDUCTIVE PLASTIC ELEMENT
SPECIAL LINEARITY

MODEL NO.'S.

SHAFT STYLES

LO20-(STROKE)-(RES.)	PLAIN
LO20P " "	
LO20T " "	#10-32 THREAD

RESOLUTION CHART

RESISTANCE DASH NO.	POWER RATING	10	25	50	100	200	500	1K	2K	5K	10K	20K	50K
LO20-15	0.5W	1.3%	1.2%	.87%	.90%	.72%	.63%	.44%	.39%	.29%			
LO20-50	0.75W		.42%	.34%	.26%	.21%	.21%	.17%	.14%	.10%	.08%		
LO20-100	1.0W			.21%	.16%	.13%	.14%	.11%	.08%	.06%	.05%	.04%	
LO20-200	2.0W				.10%	.08%	.06%	.07%	.05%	.04%	.03%	.025	.018
TEMPERATURE COEFFICIENT	±80 PPM/°C						±20 PPM/°C						

WIREWOUND RESISTANCE ELEMENT

TOLERANCES

XX = +/- .010" FRACT. = +/- 1/64"
XXX = +/- .005" ANGLES = +/- 1/2°

ALL SPECIFICATIONS SUBJECT TO CHANGE WITHOUT NOTICE.

SCALE	NONE
DATE:	5-13-86
BY	
APPRV'D	BT
CODE IDENT:	19477

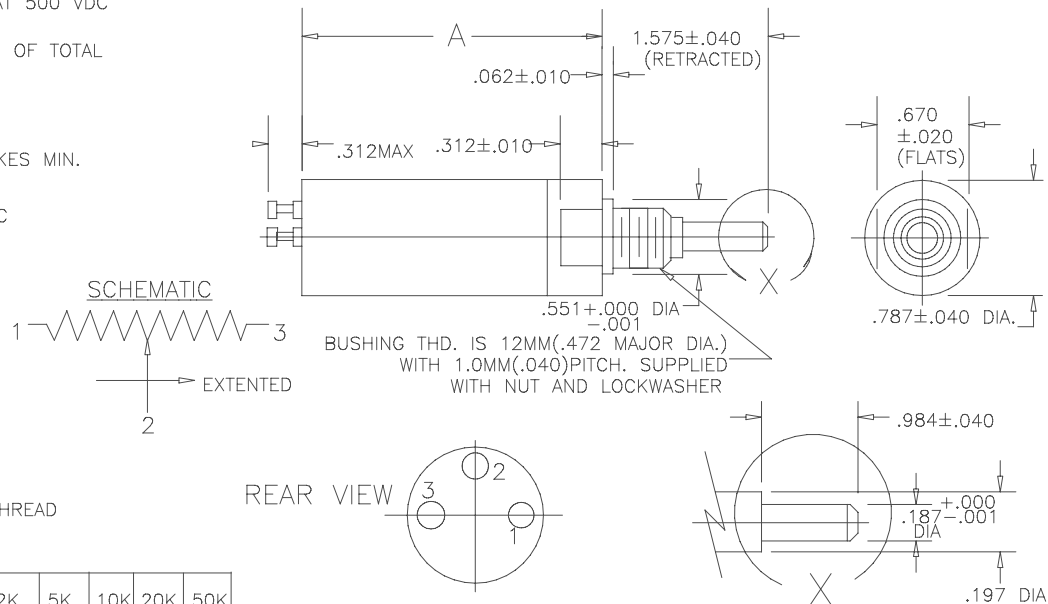
THIS DOCUMENT CONTAINS PROPRIETARY DATA
OF POLARIS INDUSTRIAL ENTERPRISES, INC. NO
DISCLOSURE, REPRODUCTION, OR USE OF ANY
PART THERE OF MAY BE MADE EXCEPT BY
WRITTEN PERMISSION.

TITLE

OIL FILLED LINEAR MOTION POTENTIOMETER

PART NO. LO20

REV. H BY BT DATE 10-20-99 ADDED LO20P



WEIGHT	DASH NO.	MECHANICAL STROKE±.06	ELECTRICAL STROKE±.04	RESISTANCE RANGE=OHMS	LINEARITY	±.040 A
.3LB.	-15	.630	.590	10 - 5K	±1.0%	3.94
.3LB.	-50	2.087	1.968	25 TO 20K	±0.7%	5.315
.35LB.	-100	4.055	3.937	50 TO 20K	±0.5%	7.283
.70LB.	-200	7.992	7.874	100 TO 80K	±0.5%	11.220



CARLSBAD
CALIFORNIA

PART NO.

LO20