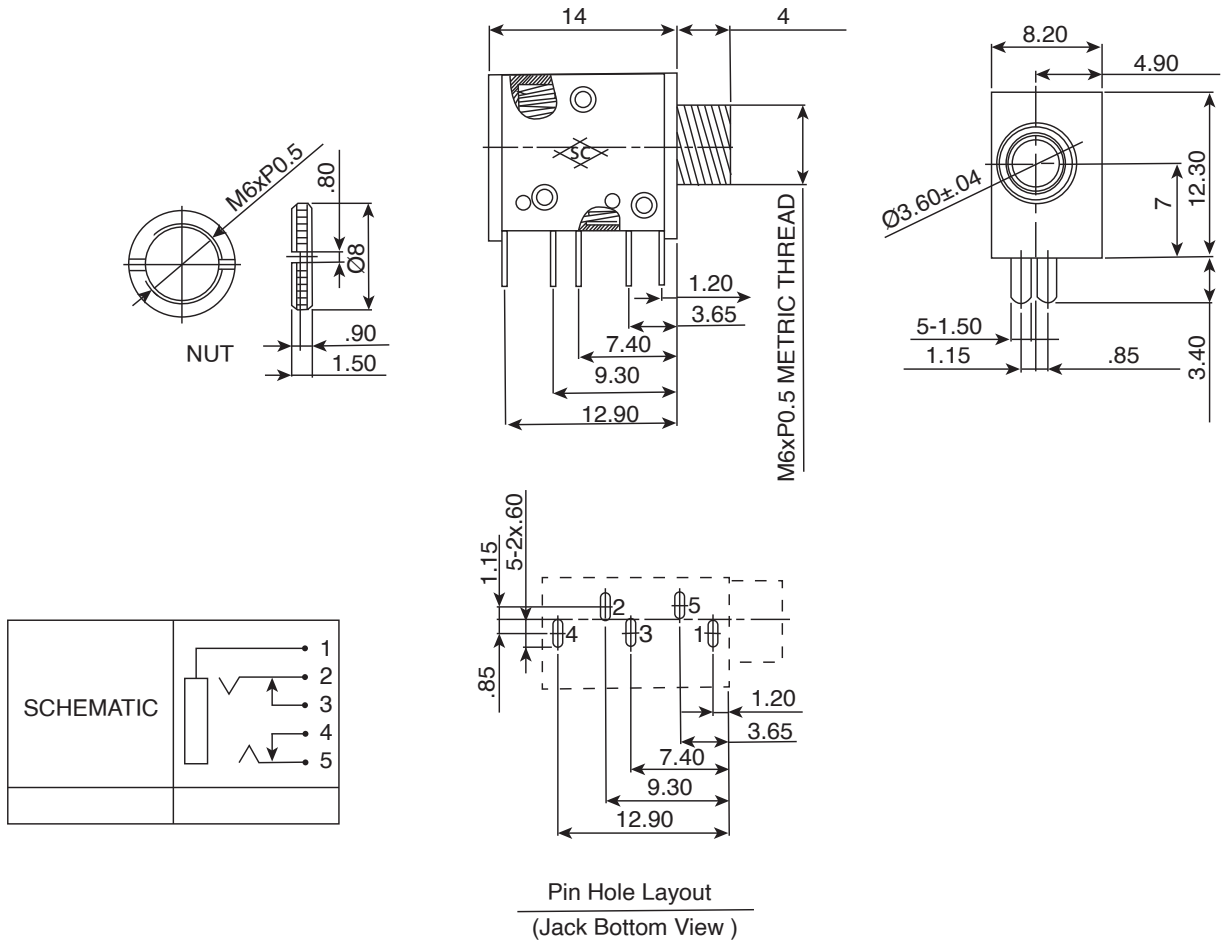


DIMENSIONS: mm



SPECIFICATIONS:

- Contact Resistance: $30m\Omega$ max
- Current Rating: Max 5A/24VDC
- Insulation Resistance: $100M\Omega$ min. at 500VDC
- Dielectric Withstand Voltage: 500VAC for one minute.

Note:

- RoHS Compliant by Exemption