

**MICRO SWITCH**  
a Honeywell Division

FED. MFG. CODE 91929

PACKET

CATALOG LISTING  
6PA206-EN

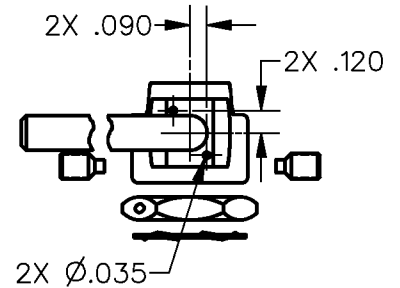
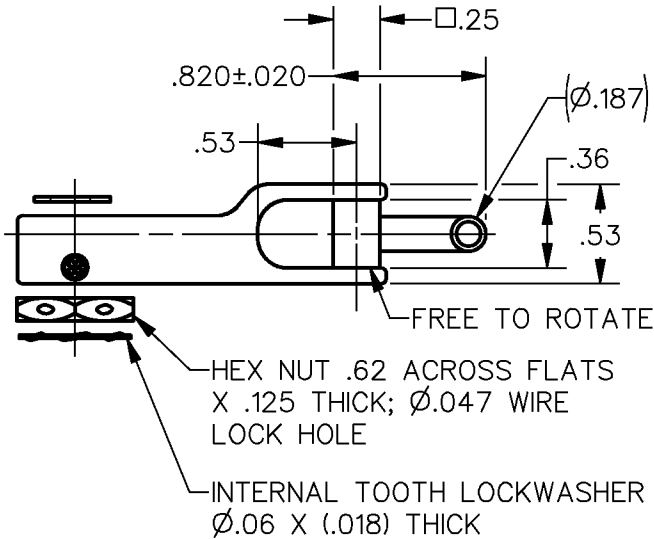
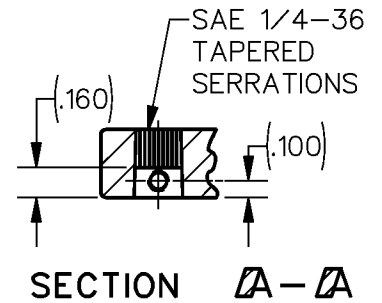
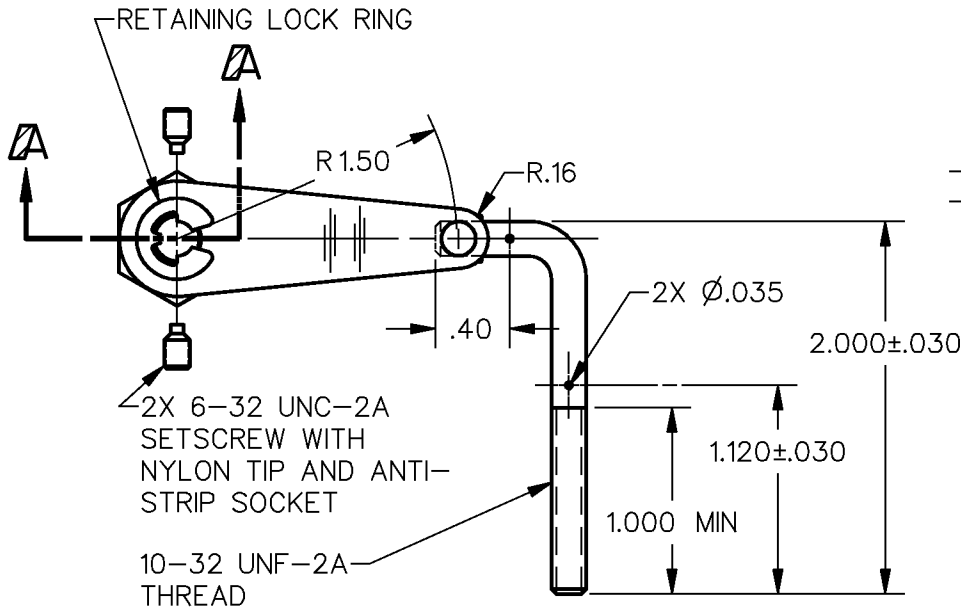
THIS DRAWING COVERS A PROPRIETARY ITEM AND IS THE PROPERTY OF MICRO SWITCH, A DIVISION OF HONEYWELL. THIS DRAWING IS NOT TO BE COPIED OR USED WITHOUT THE APPROVAL OF MICRO SWITCH.

CATALOG LISTING  
6PA206-EN  
PAGE 1 OF 1  
RELEASE NO. PR-22501  
REPLACES  
ISSUE  
3

REVISIONS

|   |                  |
|---|------------------|
| A | PR22501          |
|   | TSM<br>20 NOV 96 |
| B | 0055398          |
|   | KNR<br>07AUG09   |

CHECK  
CHECK  
07AUG09  
CMH  
CHECK  
96  
NOV 20 96  
T S M  
DRAWN  
RASTER



NOTE  
1 - PARTS FURNISHED UNASSEMBLED IN BULK AS A PACKET

|   |            |
|---|------------|
| THIRD ANGLE PROJECTION                    |            |
| SCALE NONE                                |            |
| DO NOT SCALE PRINT                        |            |
| UNLESS OTHERWISE SPECIFIED TOLERANCES ARE |            |
| ONE PLACE (.0)                            | $\pm$ .030 |
| TWO PLACE (.00)                           | $\pm$ .015 |
| THREE PLACE (.000)                        | $\pm$ .005 |
| ANGLES                                    | $\pm$      |
| WEIGHT                                    |            |

ANSI Y14.5M-1982 APPLIES