

CASE FINISH	CURRENT (AMPS)	WORKING VOLTAGE				MAXIMUM DC RESISTANCE (OHMS)	MAXIMUM VOLTAGE DROP		MINIMUM CAPACITANCE (uF)	MIN. INSERTION LOSS PER MIL-STD-220, FULL LOAD, +25°C												
		-55°C TO +85°C		-55°C TO +125°C			DC	AC		14 KHz	30 KHz	50 KHz	75 KHz	100 KHz	150 KHz	300 KHz	500 KHz	1 MHz	10 MHz	100 MHz	1 GHz	10 GHz
		AC	DC	AC	DC																	
SOLDER	15	---	280	125	200	0.004	0.060	---	0.15	--	--	4	--	8	11	17	--	27	47	--	70	--

**PART MARKING:**

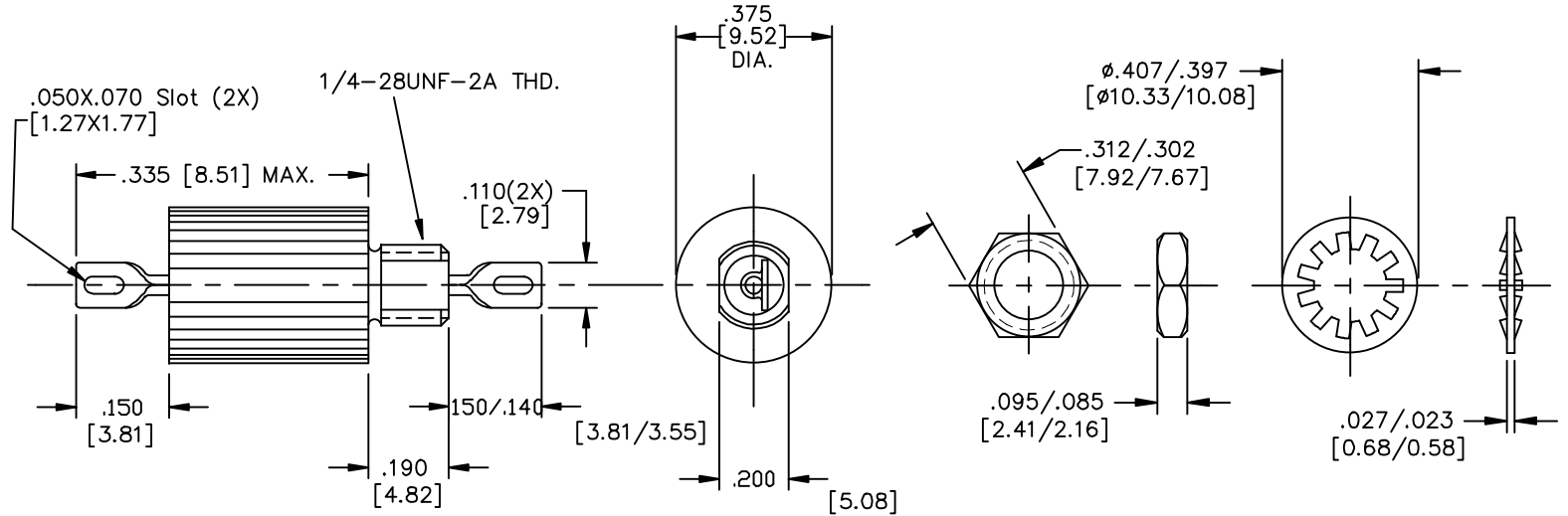
54-367-130  
SCI DATECODE

**PACKAGE MARKING:**

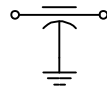
54-367-130  
SCI DATE CODE  
QTY.

**MARKING NOTES:**

N/A




SCHEMATIC



MTG. HARDWARE

**NOTES:**

1) MOUNTING TORQUE NOT TO EXCEED 7in-lbs.

										CN. 27347-CPD	00	REV. NO.	UNLESS OTHERWISE SPECIFIED DIMENSIONS ARE IN INCHES. [MILLIMETERS] DO NOT SCALE.	TOLERANCES UNLESS OTHERWISE SPECIFIED Fractions ± Dec. .xx± Dec. .xxx±.010 Angles ±0° 30'	 SPECTRUM CONTROL INC. Dwn. P. WELLS DATE 5-23-06 ENGR. STRUCHEN Sheet 1 of 1	ERIE, FAIRVIEW PENNSYLVANIA Description Low Pass EMI Filter 54-367-130		
										CHANGE NOTICE							THIRD ANGLE PROJECTION	CODE IDENT. NO. OLSP2

Quality Products From The Specialists In Electro-Magnetic Compatibility