

- 1

MATERIALS/FINISH:  
CAGE ASSEMBLY - NICKEL-SILVER ALLOY, (0.25) THICK  
EMI SPRINGS - COPPER ALLOY/2µm MIN TIN  
FRONT FLANGE - ZINC ALLOY/3µm MIN TIN OVER 1.27µm MIN NICKEL OVER 5.08µm MIN COPPER  
HEAT SINK - ALUMINUM/NICKEL  
HEAT SINK CLIP - STAINLESS STEEL  
LIGHT PIPE: CLEAR POLYCARBONATE
- 2

SPACING BETWEEN CAGES ON THE SAME PCB TO BE SPECIFIED BY THE CUSTOMER, MUST COMPLY WITH MINIMUM DIMENSION SHOWN
- 3

REFERENCE APPLICATION SPECIFICATION 114-32023 FOR RECOMMENDED DRILL HOLE DIAMETER AND PLATING THICKNESS
- 4

DATUMS AND BASIC DIMENSIONS ESTABLISHED BY CUSTOMER
- 5

HEAT SINKS AND CLIPS ARE SHIPPED ASSEMBLED, CAGE ASSEMBLY MAY BE PRESSED INTO THE PCB AS SHIPPED
- 6

DIMENSION APPLIES WITH MODULE INSERTED IN CAGE
- 7

UNPLATED THRU HOLE
- 8

MATES WITH QSFP MSA COMPATIBLE TRANSCEIVER
- 9

SURFACE TRACES PERMITTED WITHIN THIS AREA EXCEPT WHERE CAGE STANDOFFS CONTACT PCB
- 10

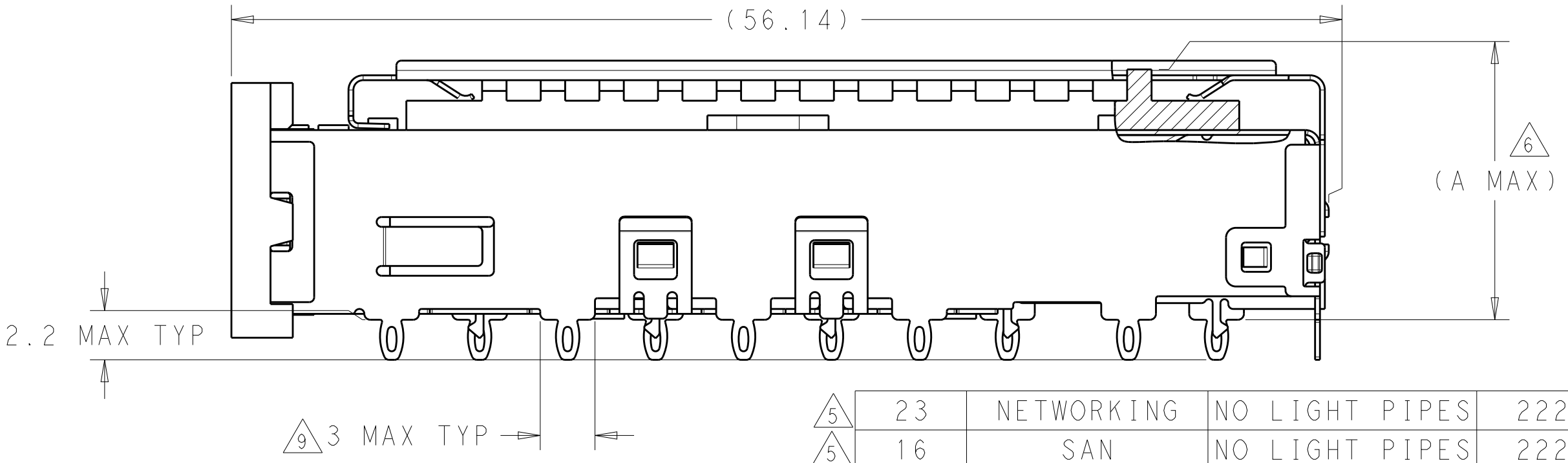
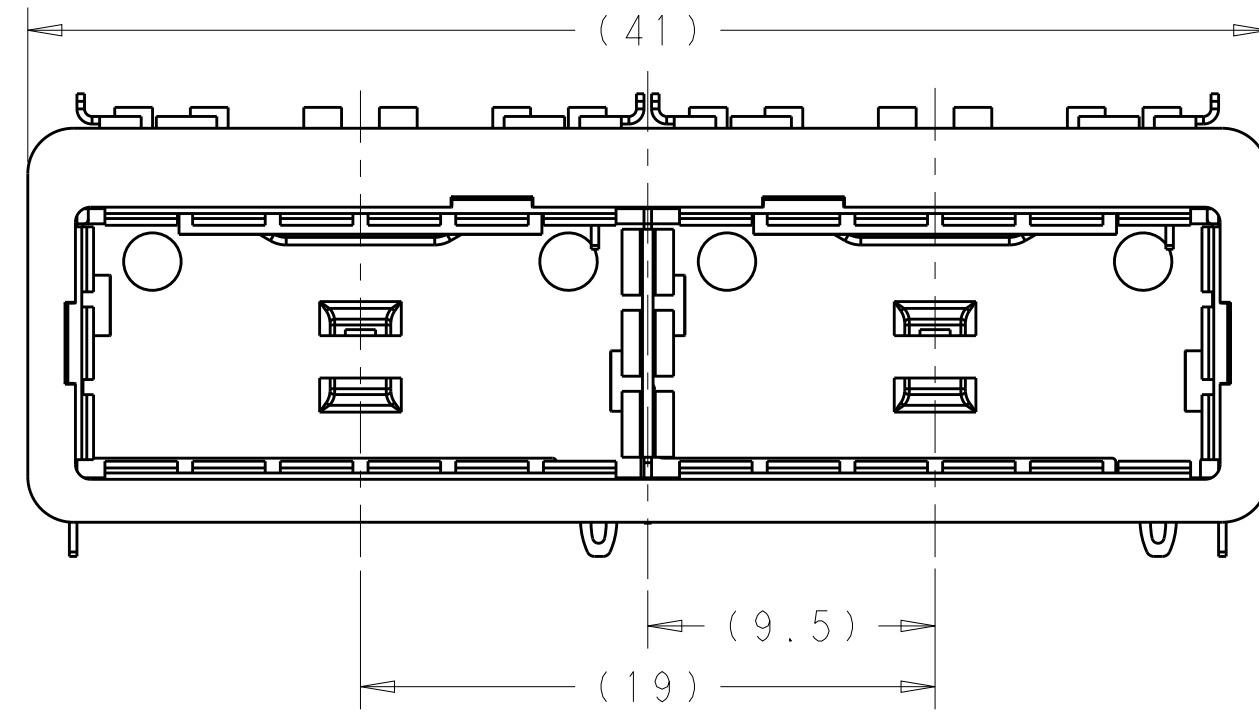
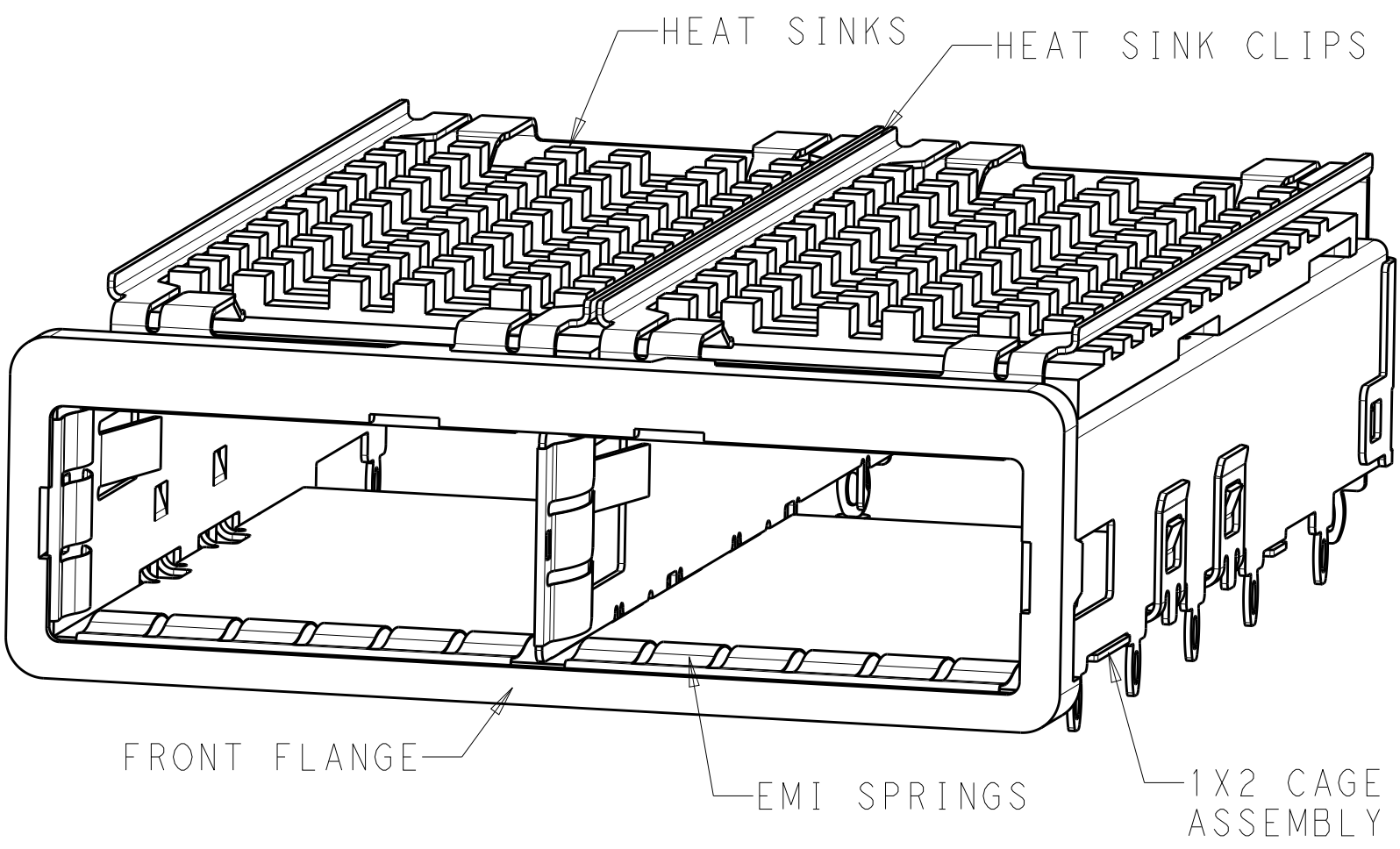
BASELINE FOR THESE DIMENSIONS IS THE CENTER OF COMPLIANT PIN HOLE
- 11

DATE CODE (YYWWD) IS MARKED ON TOP OF CAGE BUT IS CONCEALED BY HEAT SINKS, APPLIES TO CAGE ASSEMBLY ONLY
- 12

REFERENCE APPLICATION SPECIFICATION 114-32023 FOR GASKET THICKNESS CALCULATION
- 13

HEAT SINKS, LIGHT PIPES AND CLIPS ARE SHIPPED ASSEMBLED, CAGE ASSEMBLY MAY BE PRESSED INTO THE PCB AS SHIPPED.
- 14

HEAT SINKS AND CLIPS SHIPPED ASSEMBLED TO CAGE ASSEMBLY. CAGE ASSEMBLY MAY BE PRESSED INTO THE PCB AS SHIPPED. LIGHT PIPES, SHIPPED UNATTACHED, MUST BE ASSEMBLED BY CUSTOMER AFTER THE CAGE IS SEATED IN THE PCB.



5	23	NETWORKING	NO LIGHT PIPES	2227103-3
5	16	SAN	NO LIGHT PIPES	2227103-2
5	13.7	PCI	NO LIGHT PIPES	2227103-1
	A	HEAT SINK PROFILE	DESCRIPTION	PART NUMBER

THIS DRAWING IS A CONTROLLED DOCUMENT. DIMENSIONING AND TOLERANCING PER ASME Y14.5M-2009

DIMENSIONS:

mm

MATERIAL

SEE NOTES

TOLERANCES UNLESS OTHERWISE SPECIFIED:

0 PLC	±0.2
1 PLC	±0.15
2 PLC	±0.1
3 PLC	±0.05
4 PLC	±0.025
ANGLES	±1
FINISH	

SEE NOTES

DWN

10AUG2012

M.E. COWHER

CHK

16AUG2012

R.R. HENRY

APVD

16AUG2012

R.R. HENRY

PRODUCT SPEC

108-19428

APPLICATION SPEC

114-32023

WEIGHT

-

Customer Drawing

TE Connectivity

NAME

RECEPTACLE ASSEMBLY WITH HEAT SINKS, BEHIND BEZEL, 1X2, QSFP28

SIZE

CAGE CODE

DRAWING NO

RESTRICTED TO

A200779

C-2227103

-

SCALE

4:1

SHEET

1

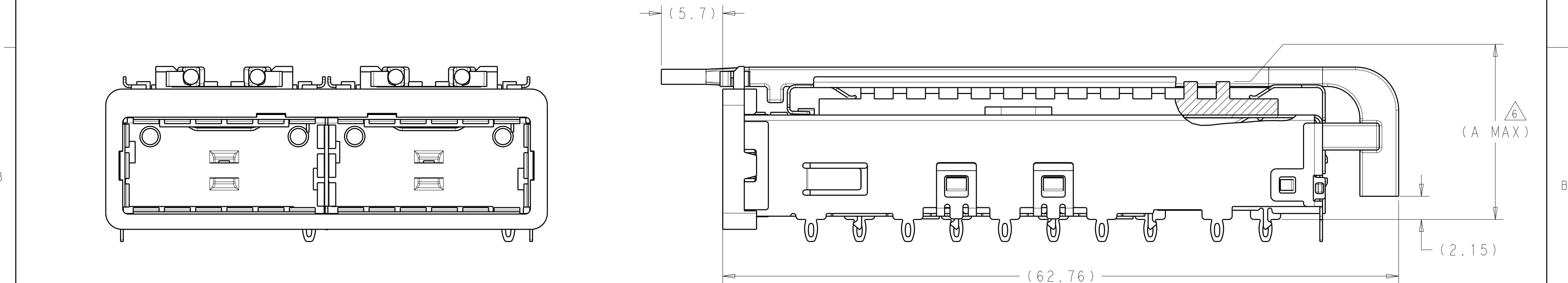
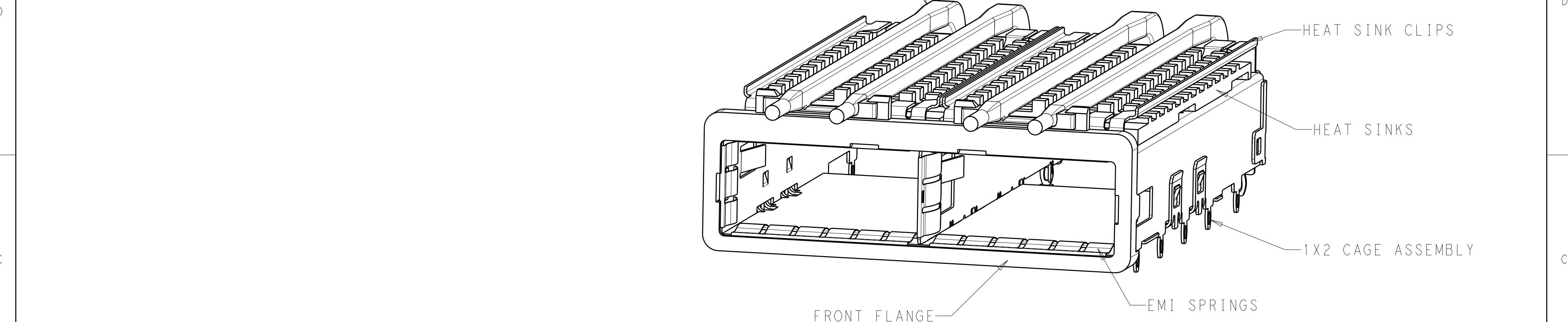
OF

8

REV

B

LOC	DIST	REVISIONS				
P	LTR	DESCRIPTION	DATE	DWN	APVD	
	-	SEE SHEET 1	-	-	-	



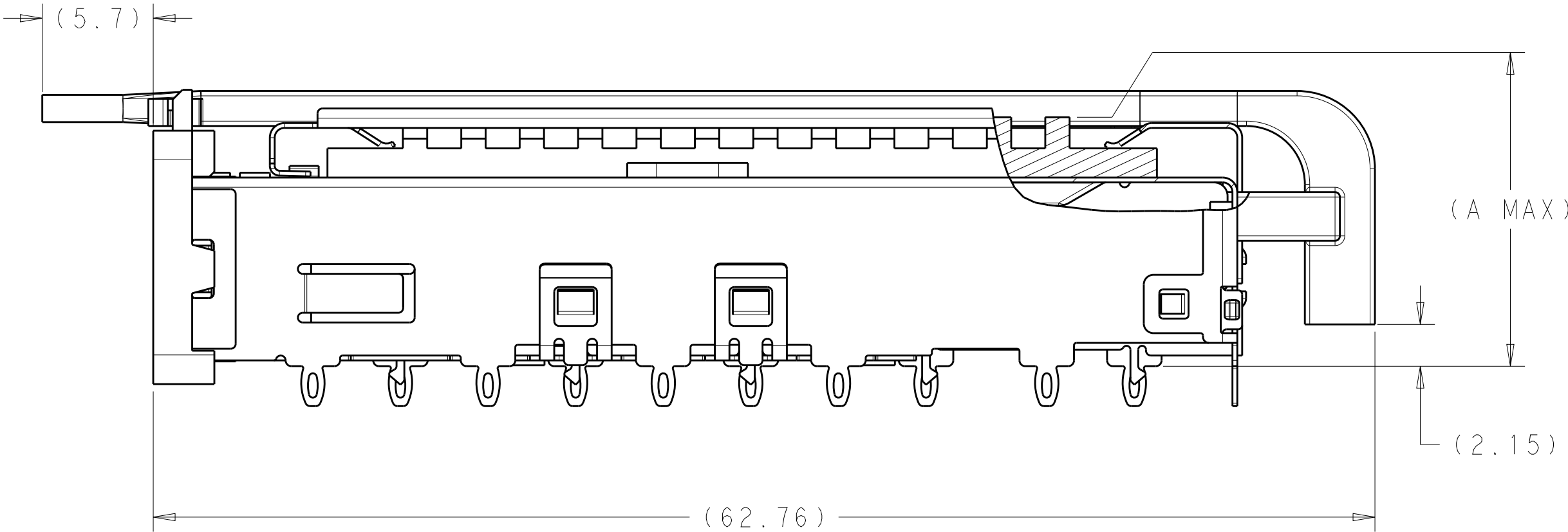
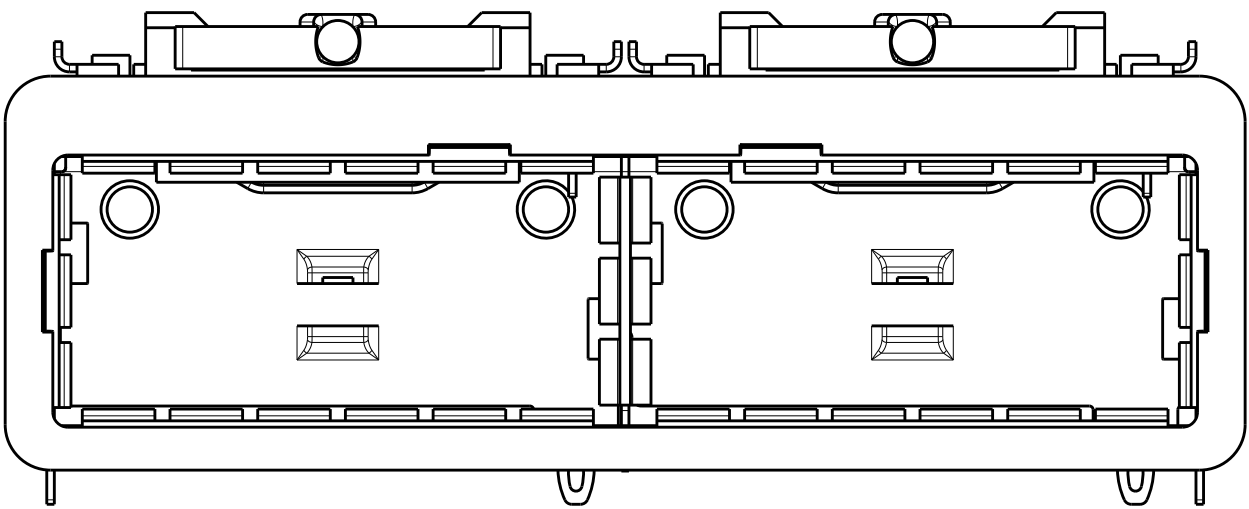
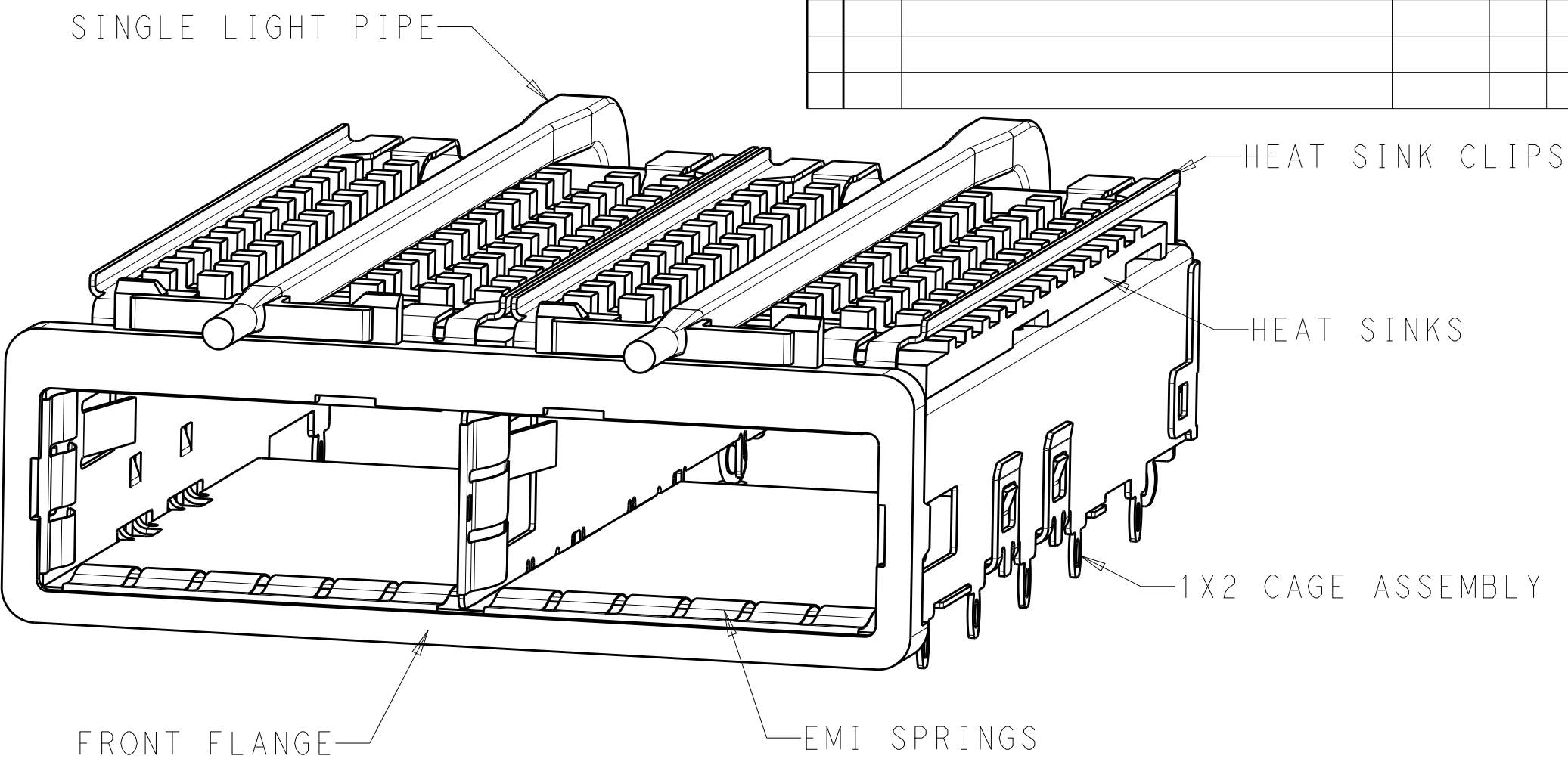
ALL DIMENSIONS THE SAME AS ON SHEET 1  
EXCEPT AS SHOWN

13	23	NETWORKING	DOUBLE LIGHT PIPES	2227103-6
13	16	SAN	DOUBLE LIGHT PIPES	2227103-5
14	13.7	PCI	DOUBLE LIGHT PIPES	2227103-4
	A	HEAT SINK PROFILE	DESCRIPTION	PART NUMBER

PROPOSAL DESIGN: 2227103-4/5/6,  
HAVE NOT RELEASED, ANY QUESTIONS,  
PLEASE CONTACT RESPONSIBLE ENGINEER.

THIS DRAWING IS A CONTROLLED DOCUMENT.		DWN M.E. COWHER 10AUG2012	TE Connectivity	
DIMENSIONS: mm		CHK R.R. HENRY 16AUG2012		
TOLERANCES UNLESS OTHERWISE SPECIFIED:		APVD R.R. HENRY 16AUG2012	NAME RECEPTACLE ASSEMBLY WITH HEAT SINKS, BEHIND BEZEL, 1X2, QSFP28	
0 PLC ±0.2 1 PLC ±0.15 2 PLC ±0.1 3 PLC ±0.05 4 PLC ±0.025 ANGLES ±1		PRODUCT SPEC 108-19428		
MATERIAL SEE NOTES material_2		APPLICATION SPEC 114-32023	SIZE A200779	CAGE CODE C-2227103
FINISH SEE NOTES finish_spec_2		WEIGHT -	DRAWING NO C-2227103	RESTRICTED TO -
Customer Drawing			SCALE 4:1	SHEET 1 OF 8
			REV B	

LOC	DIST	REVISIONS					
		P	LTR	DESCRIPTION	DATE	DWN	APVD
			-	SEE SHEET 1	-	-	-

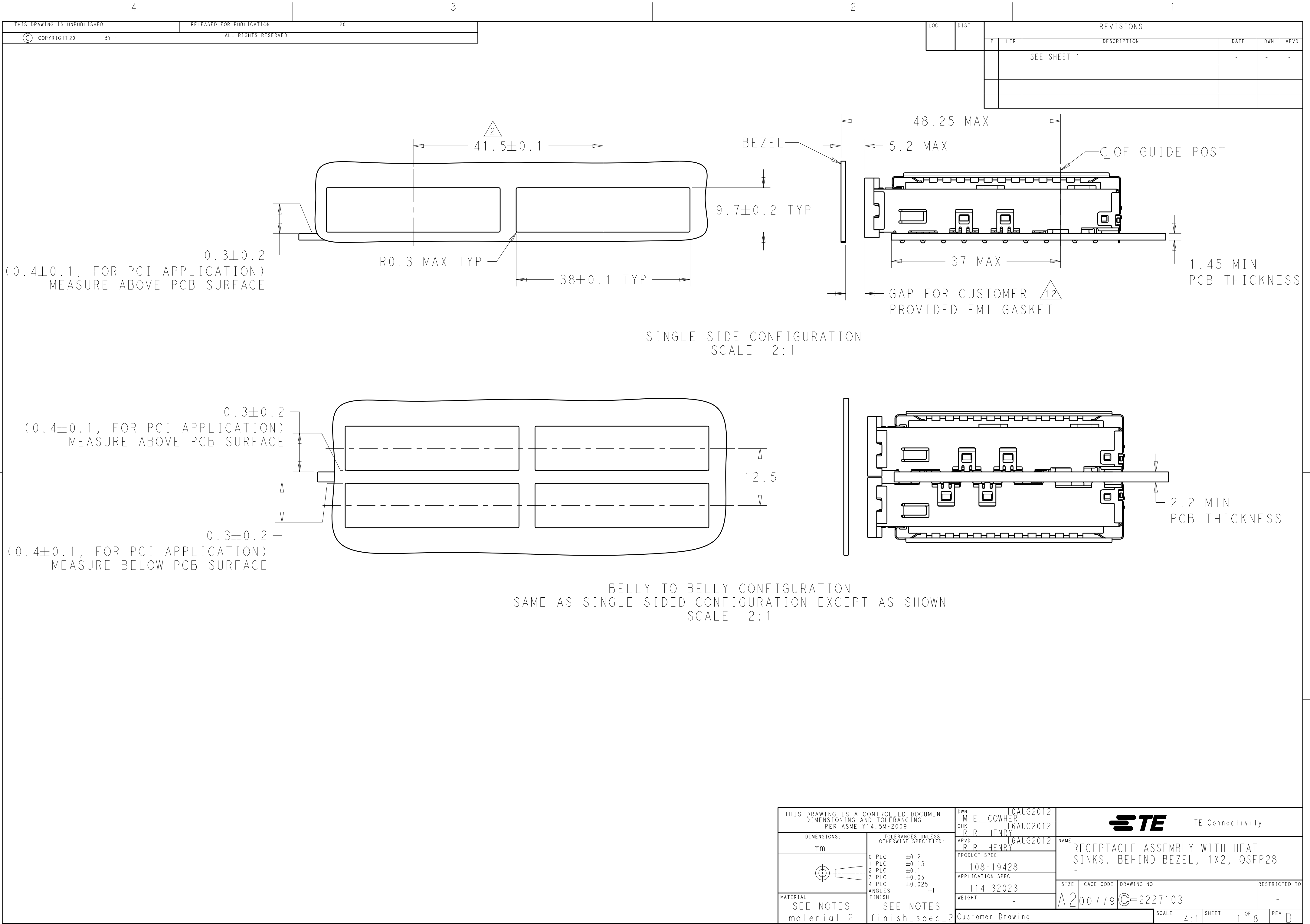


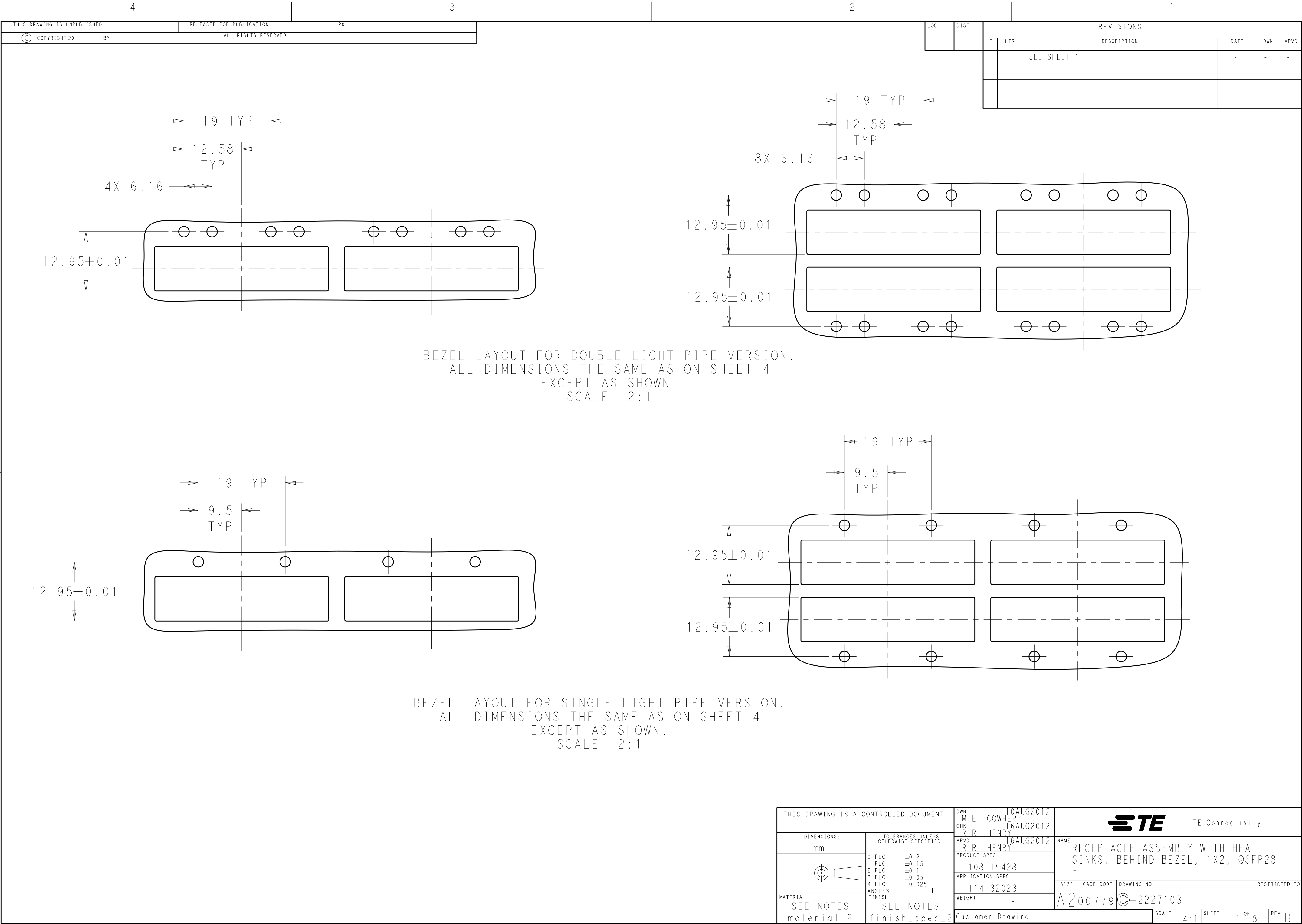
ALL DIMENSIONS THE SAME AS ON SHEET 1  
EXCEPT AS SHOWN

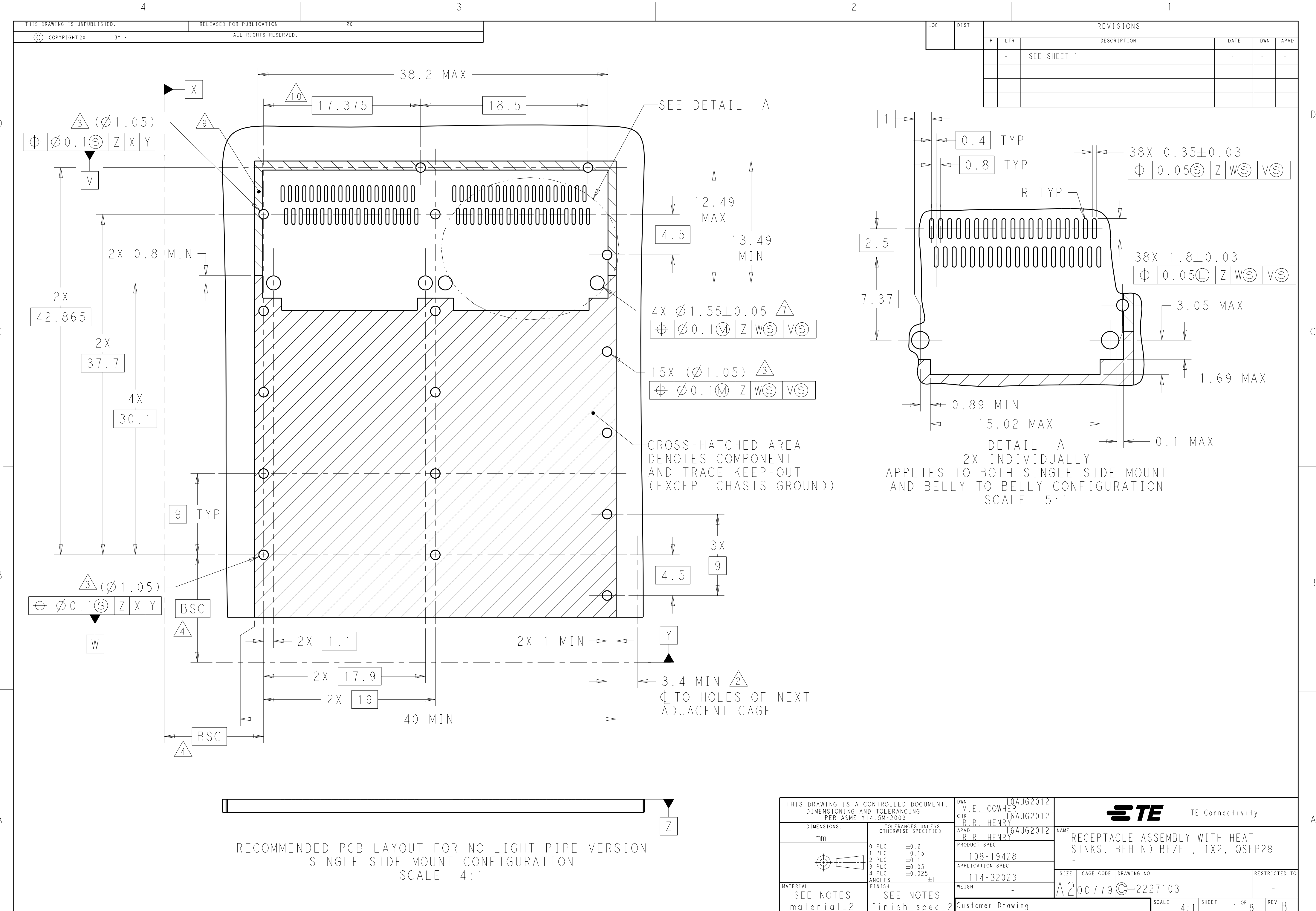
13	23	NETWORKING	SINGLE LIGHT PIPES	2227103-9
13	16	SAN	SINGLE LIGHT PIPES	2227103-8
14	13.7	PCI	SINGLE LIGHT PIPES	2227103-7
	A	HEAT SINK PROFILE	DESCRIPTION	PART NUMBER

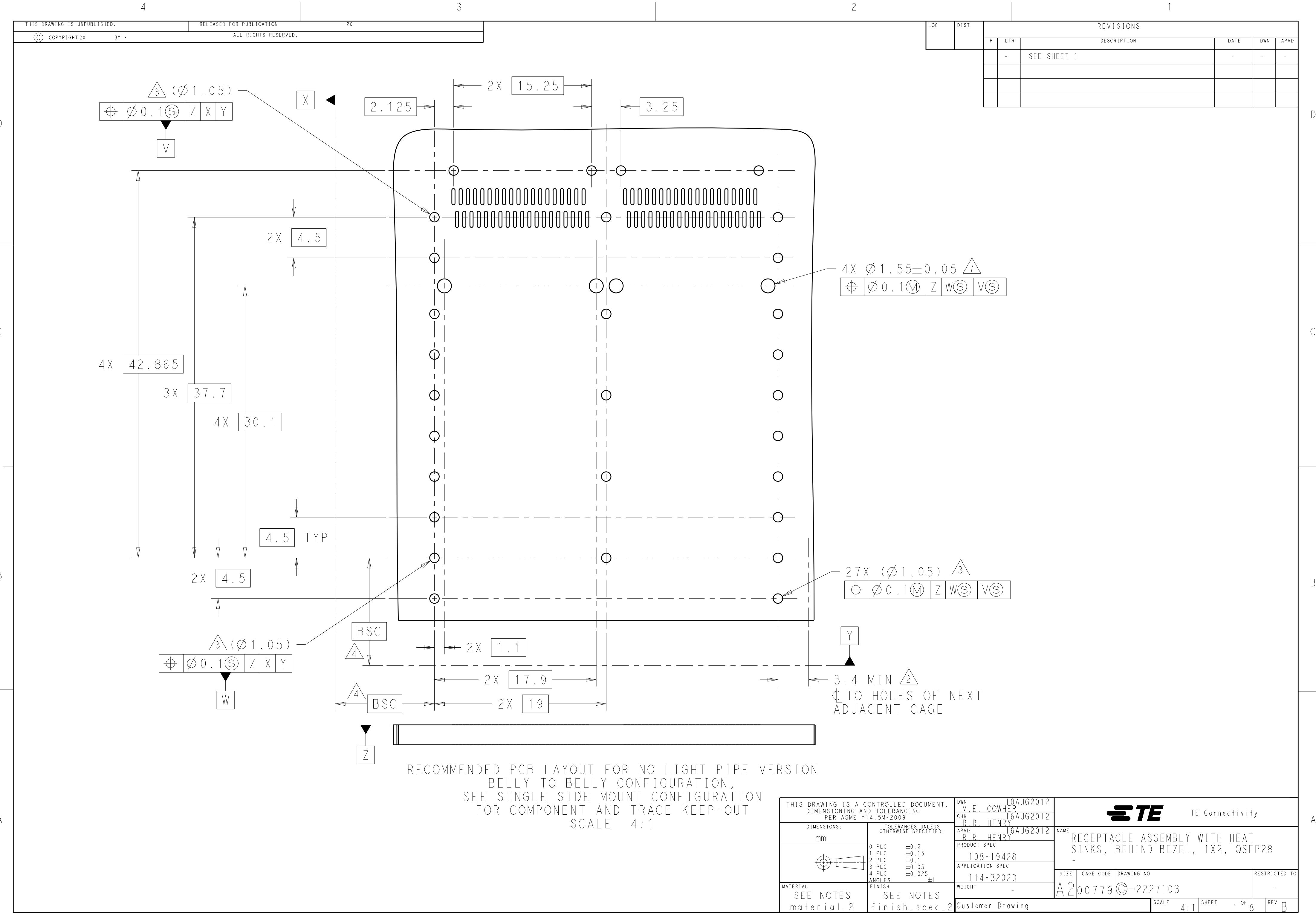
PROPOSAL DESIGN: 2227103-7/8/9,  
HAVE NOT RELEASED. ANY QUESTIONS,  
PLEASE CONTACT RESPONSIBLE ENGINEER.

THIS DRAWING IS A CONTROLLED DOCUMENT.		DWN M.E. COWHER 10AUG2012	TE Connectivity	
DIMENSIONS:		CHK R.R. HENRY 16AUG2012		
mm		APVD R.R. HENRY 16AUG2012	NAME RECEPTACLE ASSEMBLY WITH HEAT SINKS, BEHIND BEZEL, 1X2, QSFP28	
		PRODUCT SPEC	SIZE	
		108-19428	CAGE CODE	
TOLERANCES UNLESS OTHERWISE SPECIFIED:		APPLICATION SPEC	DRAWING NO	
0 PLC ±0.2		114-32023	RESTRICTED TO	
1 PLC ±0.15		WEIGHT	A200779	
2 PLC ±0.1			C-2227103	
3 PLC ±0.05			SCALE	
4 PLC ±0.025			4:1	
ANGLES ±1			SHEET	
FINISH			1 OF 8	
SEE NOTES			REV	
material_2		Customer Drawing	B	
finish_spec_2				







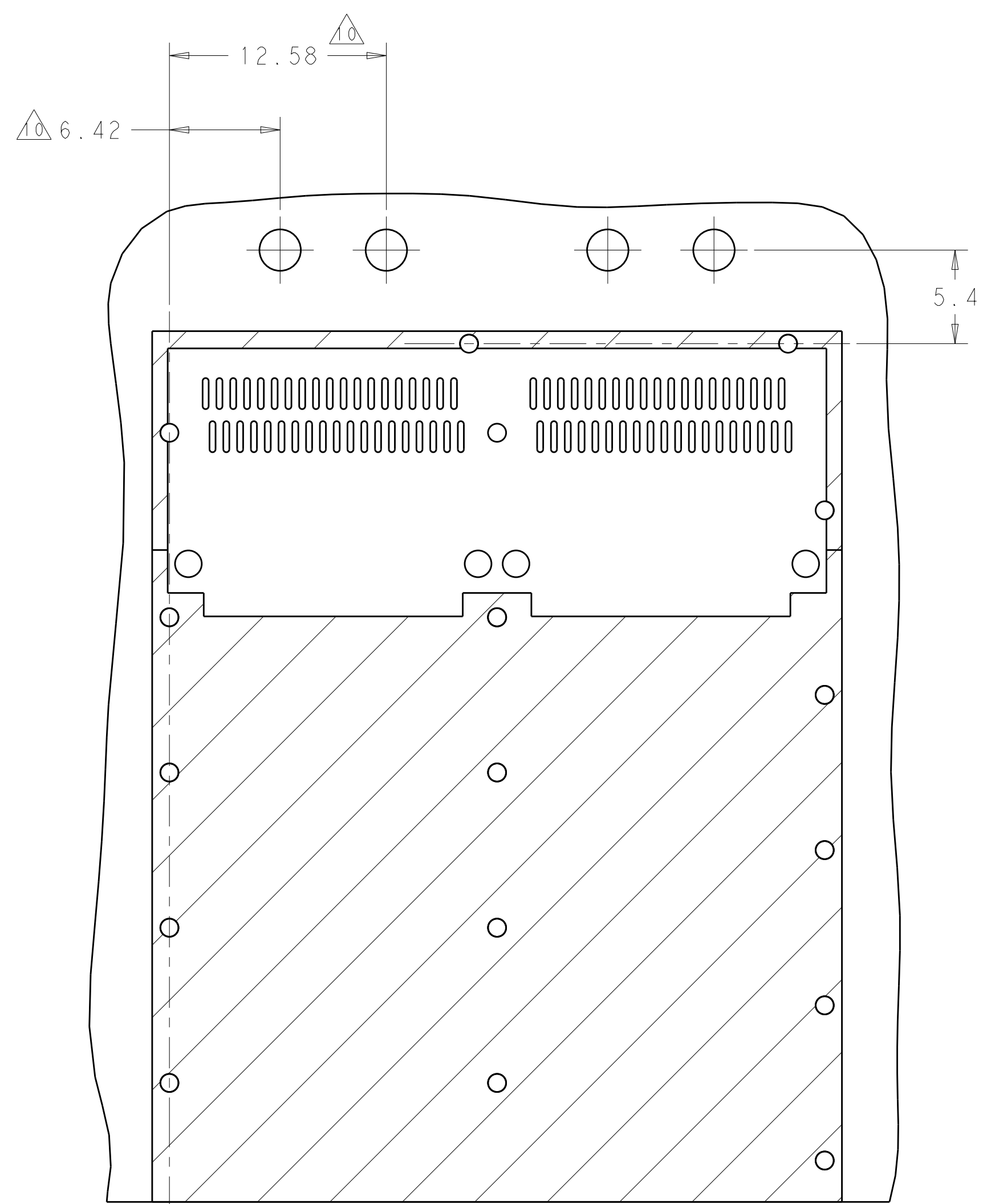


THIS DRAWING IS UNPUBLISHED.

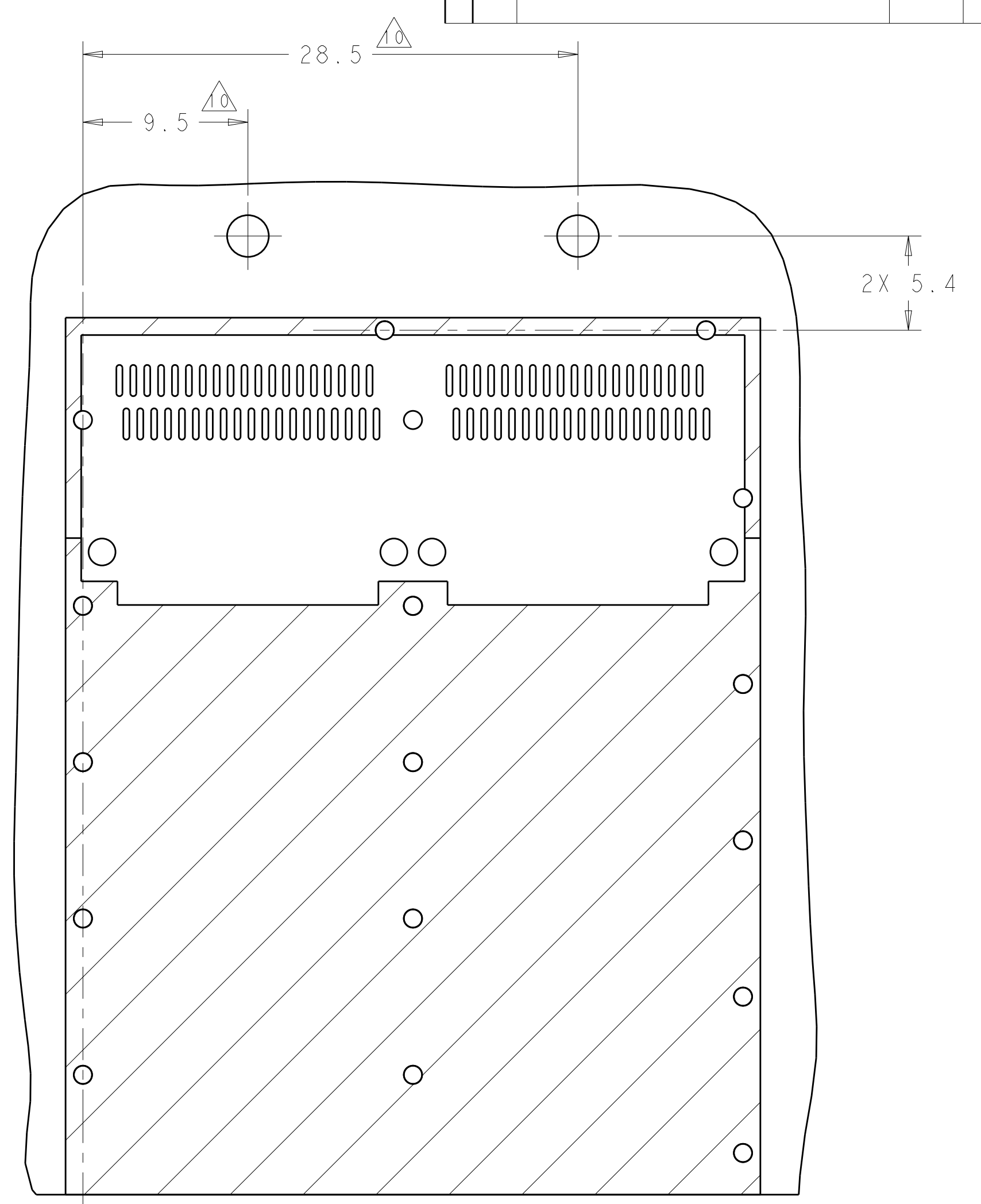
RELEASED FOR PUBLICATION20

© COPYRIGHT 20BY -ALL RIGHTS RESERVED.

LOC	DIST	REVISIONS				
P	LTR	DESCRIPTION	DATE	DWN	APVD	
-	-	SEE SHEET 1	-	-	-	



RECOMMENDED PCB LAYOUT FOR DOUBLE LIGHT PIPE VERSION.  
VIEW DEPICTS LOCATION OF LEDS FOR DOUBLE LIGHT PIPES ONLY.  
APPLIES TO BOTH SINGLE SIDED AND BELLY TO BELLY APPLICATIONS.  
SCALE 4:1



RECOMMENDED PCB LAYOUT FOR SINGLE LIGHT PIPE VERSION.  
VIEW DEPICTS LOCATION OF LEDS FOR SINGLE LIGHT PIPES ONLY.  
APPLIES TO BOTH SINGLE SIDED AND BELLY TO BELLY APPLICATIONS.  
SCALE 4:1

THIS DRAWING IS A CONTROLLED DOCUMENT.

DIMENSIONS:  
mm

MATERIAL  
SEE NOTES  
material\_2

FINISH  
SEE NOTES  
finish\_spec\_2

DWN  
M.E. COWHER  
10AUG2012

CHK  
R.R. HENRY  
16AUG2012

APVD  
R.R. HENRY  
16AUG2012

PRODUCT SPEC  
108-19428

APPLICATION SPEC  
114-32023

WEIGHT  
-

Customer Drawing

TE Connectivity

NAME  
RECEPTACLE ASSEMBLY WITH HEAT  
SINKS, BEHIND BEZEL, 1X2, QSFP28

SIZE  
A2

CAGE CODE  
00779

DRAWING NO  
C-2227103

RESTRICTED TO  
-

SCALE 4:1 SHEET 1 OF 8 REV B