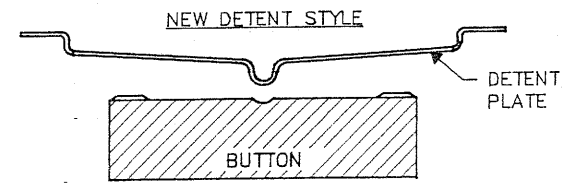
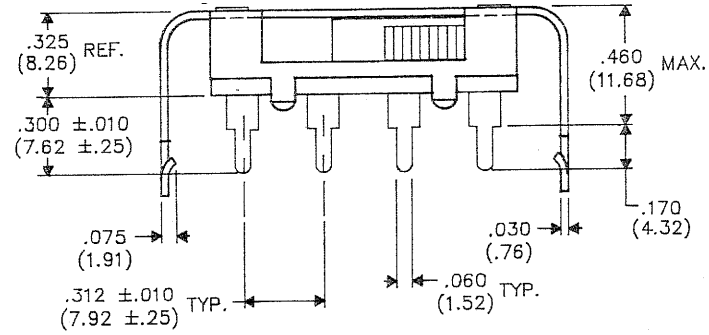
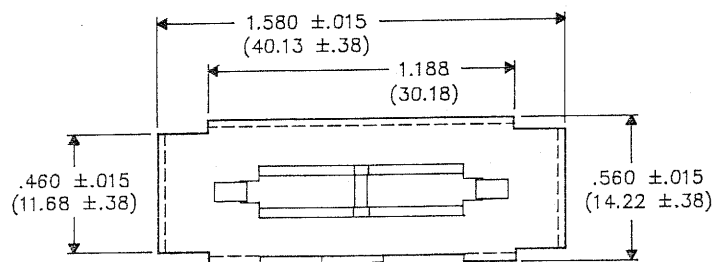


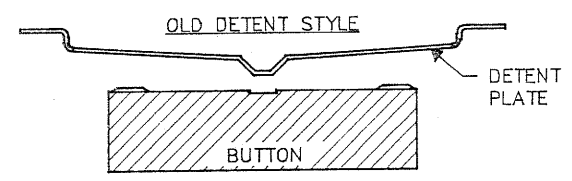
DIMENSIONS IN INCHES (MILLIMETERS)
DO NOT SCALE DRAWING...

Drawing No. **G-386-0020**



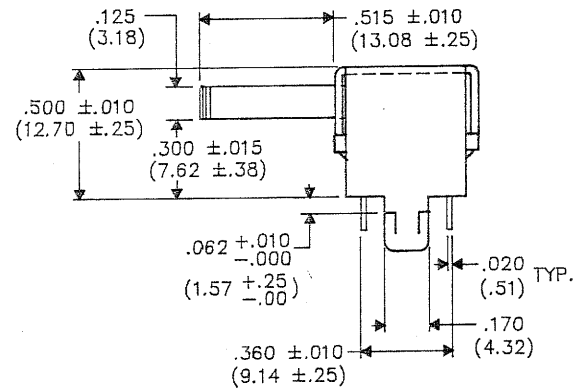
OPERATING FORCE (oz.)

C-E	E-C
16-32	4-13



OPERATING FORCE (oz.)

C-E	E-C
16-32	4-13



B-FORM-0

REVISIONS
0 RELEASED DWG 7-15-94 BSE
1 CHANGED OPERATING FORCE C-E ON NEW DETENT STYLE FROM 18-36 TO 16-32. ADDED ID. NO.. DWG 8-19-94 AUG 25 1994 BSE

CW INDUSTRIES
Southampton, Pa. 18966

TOLERANCES UNLESS OTHERWISE SPECIFIED
2 Place decimal ±.010 METRIC
3 Place decimal ±.005 1 Place dec. ±.25 MM
Angles ±1° 2 Place dec. ±.13 MM

Made for: CW IND.
Drawn by: DGW 7-15-94
Checked by: G. GULD 7-21-94
Approval: BSE 7-21-94

Title
STD. SWITCH ASSEMBLY "SYDEWYNDER" DP/3P

Division
SWITCH
Drawing No.
G-386-0020

MASTER