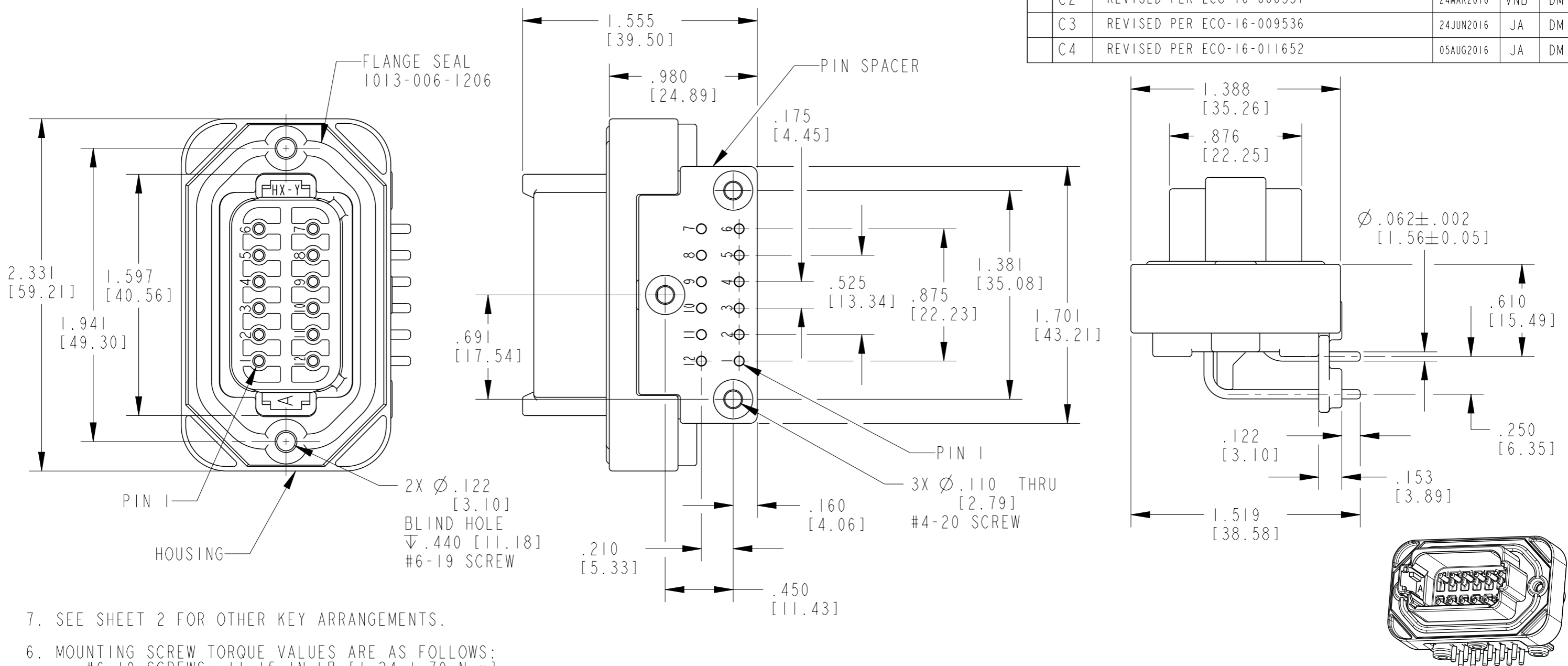


THIS DRAWING IS UNPUBLISHED. RELEASED FOR PUBLICATION 2016  
 © COPYRIGHT 2016 BY TE CONNECTIVITY ALL RIGHTS RESERVED.

LOC	DIST	REVISIONS			
P	LTR	DESCRIPTION	DATE	DWN	APVD
-	-	C1	REVISED PER ECO-14-010107	03JUL2014	JA DM
-	-	C2	REVISED PER ECO-16-006331	24MAR2016	VNB DM
-	-	C3	REVISED PER ECO-16-009536	24JUN2016	JA DM
-	-	C4	REVISED PER ECO-16-011652	05AUG2016	JA DM



- 7. SEE SHEET 2 FOR OTHER KEY ARRANGEMENTS.
- 6. MOUNTING SCREW TORQUE VALUES ARE AS FOLLOWS:  
 #6-19 SCREWS: 11-15 IN-LB [1.24-1.70 N-m].  
 #4-20 SCREWS: 6-10 IN-LB [.68-1.13 N-m].  
 VALUES VALID FOR PLASTITE 48 SCREWS ONLY.
- 5. RECOMMENDED MOUNTING SCREWS (NOT INCLUDED): CAMCAR PLASTITE 48, SINGLE HELIX.
- 4. THIS RECEPTACLE MATES WITH DT06-12SX PLUG (X = A,B,C,D KEYS, XXXX = ALL MODIFICATIONS).
- 3. CONTACT PLATING - MATING SIDE: NICKEL; PCB SIDE: TIN

TE INTERNAL PN	DEUTSCH PN
DT13-12PA	DT13-12PA
DT13-12PB	DT13-12PB
DT13-12PC	DT13-12PC
DT13-12PD	DT13-12PD

2 MATERIALS:  
 HOUSING/PIN SPACER: PA46 GF30 (SEE SHEET 2 FOR COLORS)  
 FLANGE SEAL: VMO (RED-ORANGE)  
 PIN CONTACTS: COPPER ALLOY

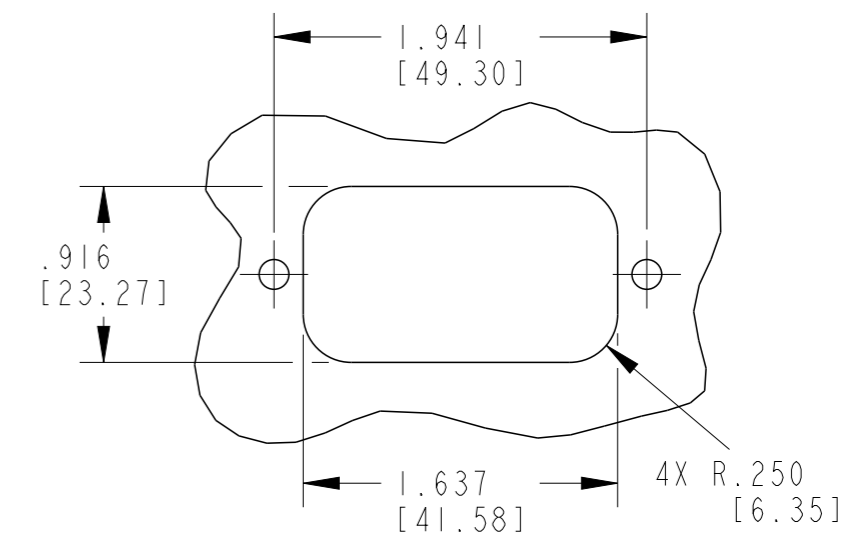
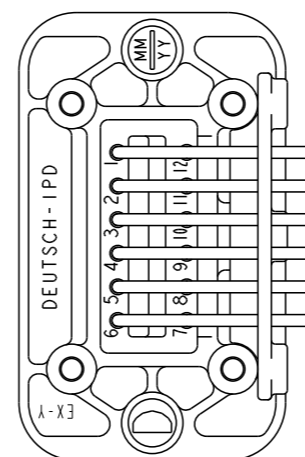
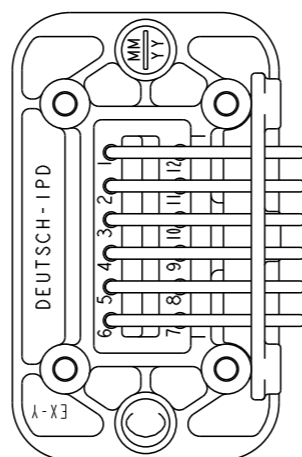
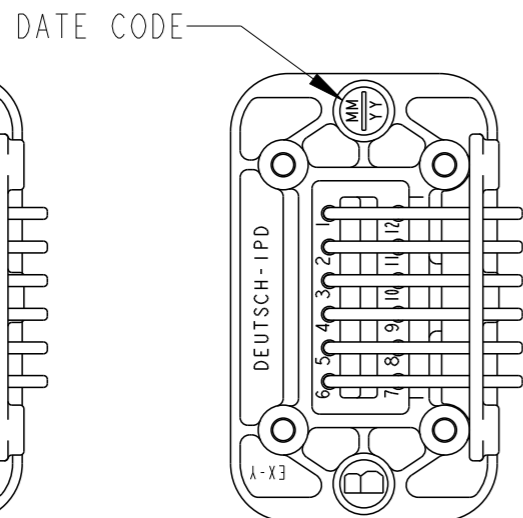
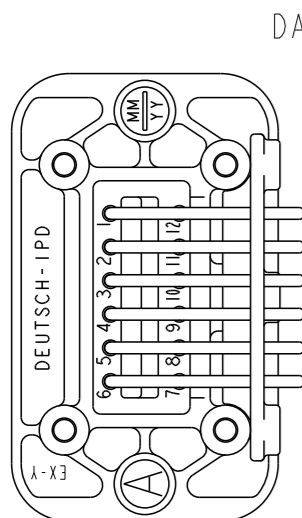
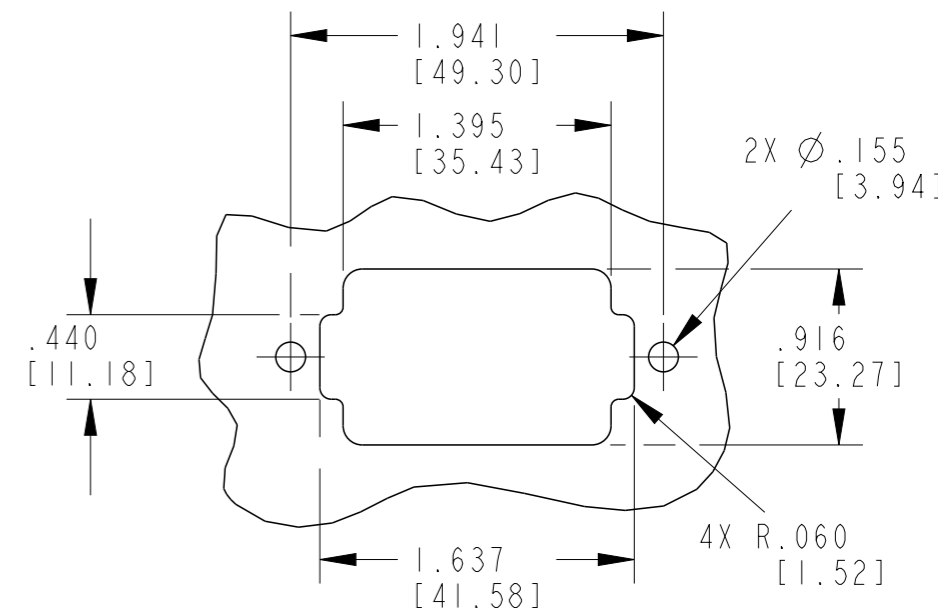
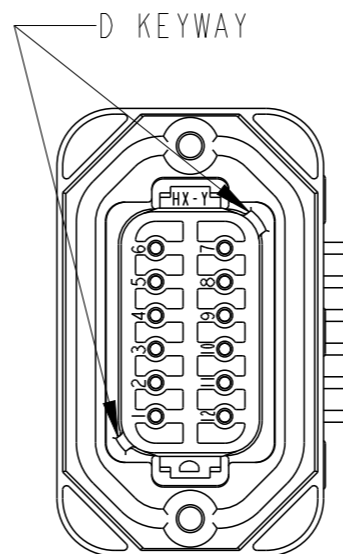
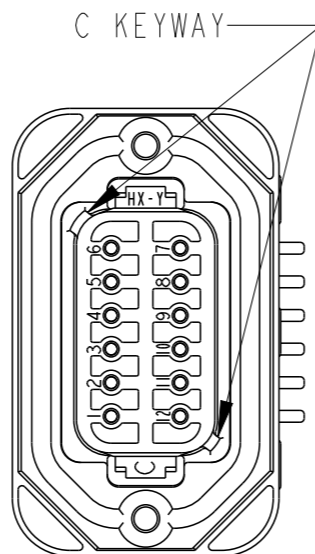
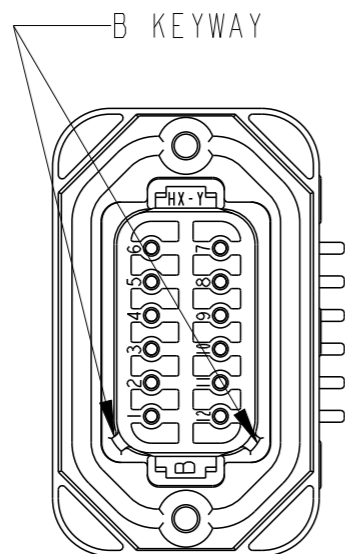
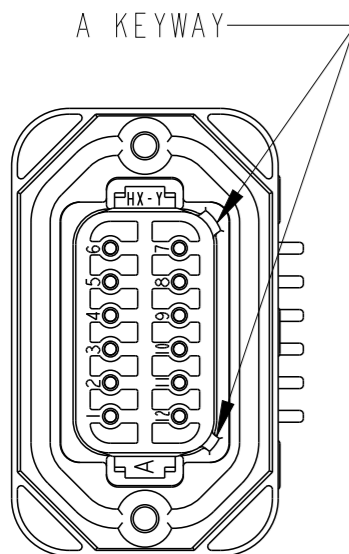
1 DIMENSION TOLERANCE: ±.025 [.64]  
 PANEL CUTOUT: ±.010 [.25]  
 PIN LOCATIONS: ±.005 [.13]  
 MOUNTING HOLE LOCATIONS: ±.010 [.13]

NOTES:

THIS DRAWING IS A CONTROLLED DOCUMENT.

DWN P. BURKE 06JUN2001	TE Connectivity <b>RECEPTACLE HEADER</b> 12 PIN 90 DEG DT SERIES
CHK KEVIN MCKEE 03JUL2014	
APVD DAVID MEYER 03JUL2014	
PRODUCT SPEC	
DIMENSIONS: INCHES [mm]	NAME
TOLERANCES UNLESS OTHERWISE SPECIFIED:	SIZE CAGE CODE DRAWING NO RESTRICTED TO
0 PLC ±	A3 4AFU8 ©DT13-12PX
1 PLC ±	WEIGHT 41g±10%
2 PLC ±	CUSTOMER DRAWING
3 PLC ±	SCALE 3:2 SHEET 1 OF 2 REV C4
4 PLC ±	
ANGLES ±	
FINISH -	
±0°30'0"	

LOC		DIST		REVISIONS			
P	LTR	DESCRIPTION	DATE	DWN	APVD		
	-	SEE SHEET 1	-	-	-		



**DT13-12PA**  
**COLOR GREY**

**DT13-12PB**  
**COLOR BLACK**

**DT13-12PC**  
**COLOR GREEN**

**DT13-12PD**  
**COLOR BROWN**

**RECOMMENDED PANEL CUTOUTS**

THIS DRAWING IS A CONTROLLED DOCUMENT.		DWN P. BURKE 06 JUN 2001		
DIMENSIONS: INCHES [mm]		CHK KEVIN MCKEE 03 JUL 2014		
TOLERANCES UNLESS OTHERWISE SPECIFIED:		APVD DAVID MEYER 03 JUL 2014	NAME RECEPTACLE HEADER 12 PIN 90 DEG DT SERIES	
0 PLC ± 1 PLC ± 2 PLC ± 3 PLC ± 4 PLC ± ANGLES ±0°30'0"		PRODUCT SPEC	RESTRICTED TO	
MATERIAL		APPLICATION SPEC	SIZE A3	CAGE CODE 4AFU8
FINISH		WEIGHT 41g ±10%	DRAWING NO DT13-12PX	
2		CUSTOMER DRAWING	SCALE 1:1	SHEET 2 OF 2
			REV C4	