

### 354 Series OMNI-BLOK® Molded Base Fuse Block for 3AB/3AG Fuses

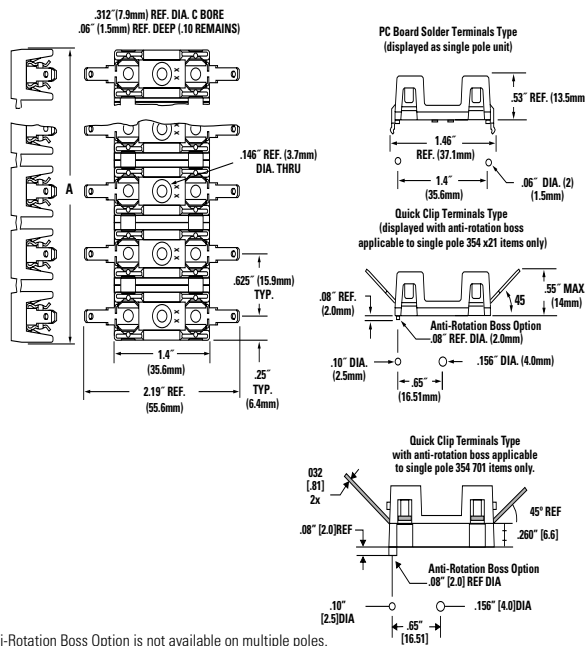


#### Agency Approval

| Agency  | Agency File Number |
|---|--------------------|
|  | E14721*            |
|  | 7316**             |

\* - UL Recognized to UL/CSA 4248.1  
 \*\* - CSA Certified to CSA C22.2 No 39-M1987

#### Product & Mounting Dimensions



\* Anti-Rotation Boss Option is not available on multiple poles.

#### Clip Detail



**Note:** Two different style clips can be supplied for circuit identity or polarization. Contact Littelfuse.

#### Product Characteristics

| Compatible Fuses Size      | 3AB/AG  |
|----------------------------|---|
| <b>Description</b>         | A low profile fuse block featuring individual barriers which reinforce the fuse clips while providing greater protection against clip damage and electrical shock. The unique design permits self-alignment of clips to fuse cap. This, plus a one-piece clip/terminal assures low contact resistance. Higher current ratings have been attained using spring brass clips. With the exception of the two-pole unit, multiple pole units may be broken apart to obtain desired number of poles |
| <b>Dielectric Strength</b> | 2200V., Minimum   |
| <b>Clip/Terminals</b>      | Tin plated phosphorus bronze except for 354900 series which is tin plated spring brass.   |
| <b>Base</b>                | Glass reinforced Thermoplastic. UL 94V0 flammability rating. The standard base color is Gray except for 345 x21 items (single pole products which include anti-rotation boss option) where the standard base color is Black. Refer to the Ordering Information table on the following page for more information.  |
| <b>Ambient Temperature</b> | -40°C to +85°C  |

#### Electrical Information

| Series or Catalog Number | Terminals            | Rating            |
|--------------------------|----------------------|-------------------|
| 354 000                  | Solder               | 30A, 600 VDC/VAC* |
| 354 600                  | 3/16" Q.C.           | 20A, 600 VDC/VAC  |
| 354 700                  | 1/4" Q.C. .032" Clip | 30A, 600 VDC/VAC  |
| 354 800                  | 1/4" Q.C.            | 20A, 600 VDC/VAC  |
| 354 900                  | 1/4" Q.C.            | 30A, 600 VDC/VAC  |
| 354 101-GY               | P.C. Board           | 15A, 600 VDC/VAC  |

\*30 amp capability is based on temperature rise with #10 AWG wire properly soldered.

#### Additional Information



Datasheet



Resources



Samples

### Ordering Information

| Solder Terminals | NEMA Style 3/16" Quick Clip Terminals | 1/4" Quick Clip Terminals | NEMA Style 1/4" Quick Clip .032" Terminals | NEMA Style 1/4" Quick Clip Terminals | Number of Poles | Reference Dimension "A" [mm] |
|------------------|---------------------------------------|---------------------------|--|--------------------------------------|-----------------|------------------------------|
| Ordering No.     |                                       |                           | Ordering No.                               |                                      |                 |                              |
| 03540101ZXGY     | -                                     | -                         | -  | -                                    | 1               | .50" [12.7]                  |
| 03540021ZXBL*    | 03540621ZXBL*                         | 03540821ZXBL*             | -  | 03540921ZXBL*                        | 1               | .50" [12.7]                  |
| 03540001ZXGY     | 03540601ZXGY                          | 03540801ZXGY              | 03540701ZXGY*                              | 03540901ZXGY                         | 1               | .50" [12.7]                  |
| 03540002ZXGY     | 03540602ZXGY                          | 03540802ZXGY              | 03540702ZXGY                               | 03540902ZXGY                         | 2               | 1.12" [28.5]                 |
| 03540003ZXGY     | 03540603ZXGY                          | 03540803ZXGY              | 03540703ZXGY                               | 03540903ZXGY                         | 3               | 1.75" [44.5]                 |
| 03540004ZXGY     | 03540604ZXGY                          | 03540804ZXGY              | 03540704ZXGY                               | 03540904ZXGY                         | 4               | 2.38" [60.5]                 |
| 03540005ZXGY     | 03540605ZXGY                          | 03540805ZXGY              | 03540705ZXGY                               | 03540905ZXGY                         | 5               | 3.00" [76.2]                 |
| 03540006ZXGY     | 03540606ZXGY                          | 03540806ZXGY              | 03540706ZXGY                               | 03540906ZXGY                         | 6               | 3.63" [92.2]                 |
| 03540007ZXGY     | 03540607ZXGY                          | 03540807ZXGY              | 03540707ZXGY                               | 03540907ZXGY                         | 7               | 4.25" [108.0]                |
| 03540008ZXGY     | 03540608ZXGY                          | 03540808ZXGY              | 03540708ZXGY                               | 03540908ZXGY                         | 8               | 4.88" [124.0]                |
| 03540009ZXGY     | 03540609ZXGY                          | 03540809ZXGY              | 03540709ZXGY                               | 03540909ZXGY                         | 9               | 5.50" [139.7]                |
| 03540010ZXGY     | 03540610ZXGY                          | 03540810ZXGY              | 03540710ZXGY                               | 03540910ZXGY                         | 10              | 6.13" [155.7]                |
| 03540011ZXGY     | 03540611ZXGY                          | 03540811ZXGY              | 03540711ZXGY                               | 03540911ZXGY                         | 11              | 6.75" [171.5]                |
| 03540012ZXGY     | 03540612ZXGY                          | 03540812ZXGY              | 03540712ZXGY                               | 03540912ZXGY                         | 12              | 7.38" [187.5]                |

\* With Anti-Rotation Boss