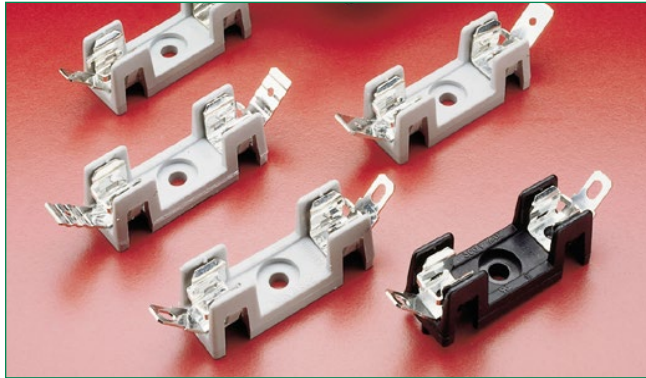




### 354 Series OMNI-BLOK® Molded Base Fuse Block for 3AB/3AG Fuses

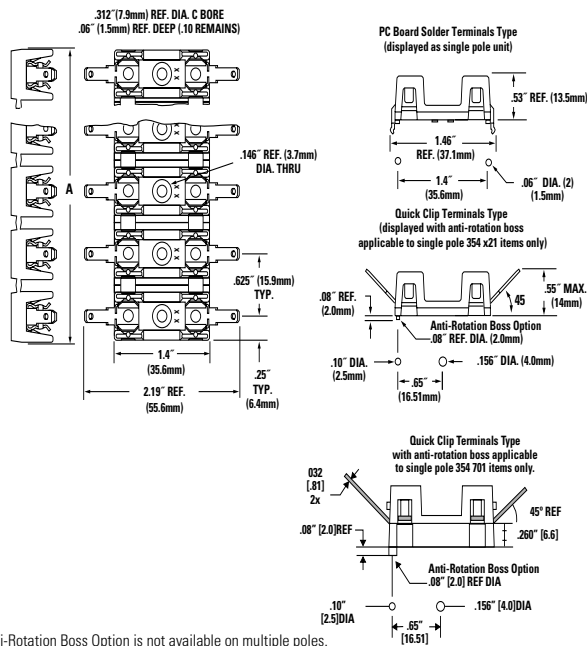


#### Agency Approval

Agency	Agency File Number
	E14721*
	7316**

\* - UL Recognized to UL/CSA 4248.1  
 \*\* - CSA Certified to CSA C22.2 No 39-M1987

#### Product & Mounting Dimensions



\* Anti-Rotation Boss Option is not available on multiple poles.

#### Clip Detail



**Note:** Two different style clips can be supplied for circuit identity or polarization. Contact Littelfuse.

#### Product Characteristics

Compatible Fuses Size	3AB/AG
<b>Description</b>	A low profile fuse block featuring individual barriers which reinforce the fuse clips while providing greater protection against clip damage and electrical shock. The unique design permits self-alignment of clips to fuse cap. This, plus a one-piece clip/terminal assures low contact resistance. Higher current ratings have been attained using spring brass clips. With the exception of the two-pole unit, multiple pole units may be broken apart to obtain desired number of poles
<b>Dielectric Strength</b>	2200V., Minimum
<b>Clip/Terminals</b>	Tin plated phosphorus bronze except for 354900 series which is tin plated spring brass.
<b>Base</b>	Glass reinforced Thermoplastic. UL 94V0 flammability rating. The standard base color is Gray except for 345 x21 items (single pole products which include anti-rotation boss option) where the standard base color is Black. Refer to the Ordering Information table on the following page for more information.
<b>Ambient Temperature</b>	-40°C to +85°C

#### Electrical Information

Series or Catalog Number	Terminals	Rating
354 000	Solder	30A, 600 VDC/VAC*
354 600	3/16" Q.C.	20A, 600 VDC/VAC
354 700	1/4" Q.C. .032" Clip	30A, 600 VDC/VAC
354 800	1/4" Q.C.	20A, 600 VDC/VAC
354 900	1/4" Q.C.	30A, 600 VDC/VAC
354 101-GY	P.C. Board	15A, 600 VDC/VAC

\*30 amp capability is based on temperature rise with #10 AWG wire properly soldered.

#### Additional Information



Datasheet



Resources



Samples

### Ordering Information

Solder Terminals	NEMA Style 3/16" Quick Clip Terminals	1/4" Quick Clip Terminals	NEMA Style 1/4" Quick Clip .032" Terminals	NEMA Style 1/4" Quick Clip Terminals	Number of Poles	Reference Dimension "A" [mm]
Ordering No.			Ordering No.			
03540101ZXGY	-	-	-	-	1	.50" [12.7]
03540021ZXBL*	03540621ZXBL*	03540821ZXBL*	-	03540921ZXBL*	1	.50" [12.7]
03540001ZXGY	03540601ZXGY	03540801ZXGY	03540701ZXGY*	03540901ZXGY	1	.50" [12.7]
03540002ZXGY	03540602ZXGY	03540802ZXGY	03540702ZXGY	03540902ZXGY	2	1.12" [28.5]
03540003ZXGY	03540603ZXGY	03540803ZXGY	03540703ZXGY	03540903ZXGY	3	1.75" [44.5]
03540004ZXGY	03540604ZXGY	03540804ZXGY	03540704ZXGY	03540904ZXGY	4	2.38" [60.5]
03540005ZXGY	03540605ZXGY	03540805ZXGY	03540705ZXGY	03540905ZXGY	5	3.00" [76.2]
03540006ZXGY	03540606ZXGY	03540806ZXGY	03540706ZXGY	03540906ZXGY	6	3.63" [92.2]
03540007ZXGY	03540607ZXGY	03540807ZXGY	03540707ZXGY	03540907ZXGY	7	4.25" [108.0]
03540008ZXGY	03540608ZXGY	03540808ZXGY	03540708ZXGY	03540908ZXGY	8	4.88" [124.0]
03540009ZXGY	03540609ZXGY	03540809ZXGY	03540709ZXGY	03540909ZXGY	9	5.50" [139.7]
03540010ZXGY	03540610ZXGY	03540810ZXGY	03540710ZXGY	03540910ZXGY	10	6.13" [155.7]
03540011ZXGY	03540611ZXGY	03540811ZXGY	03540711ZXGY	03540911ZXGY	11	6.75" [171.5]
03540012ZXGY	03540612ZXGY	03540812ZXGY	03540712ZXGY	03540912ZXGY	12	7.38" [187.5]

\* With Anti-Rotation Boss