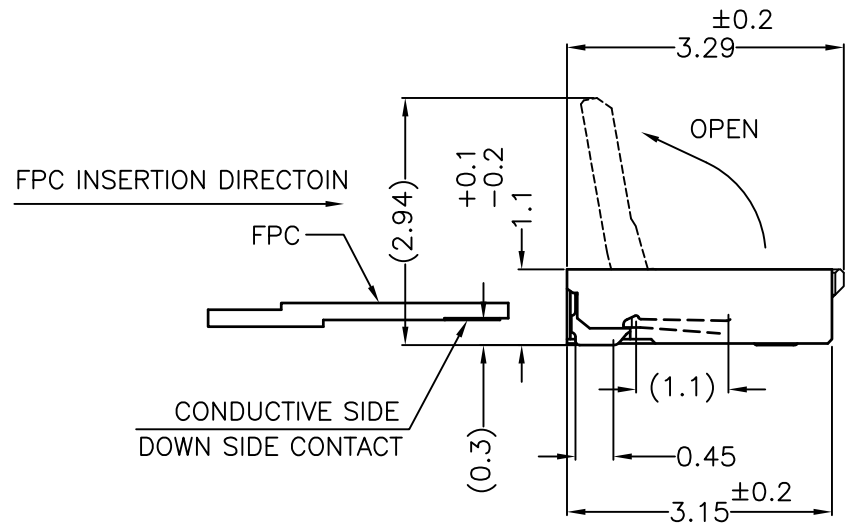
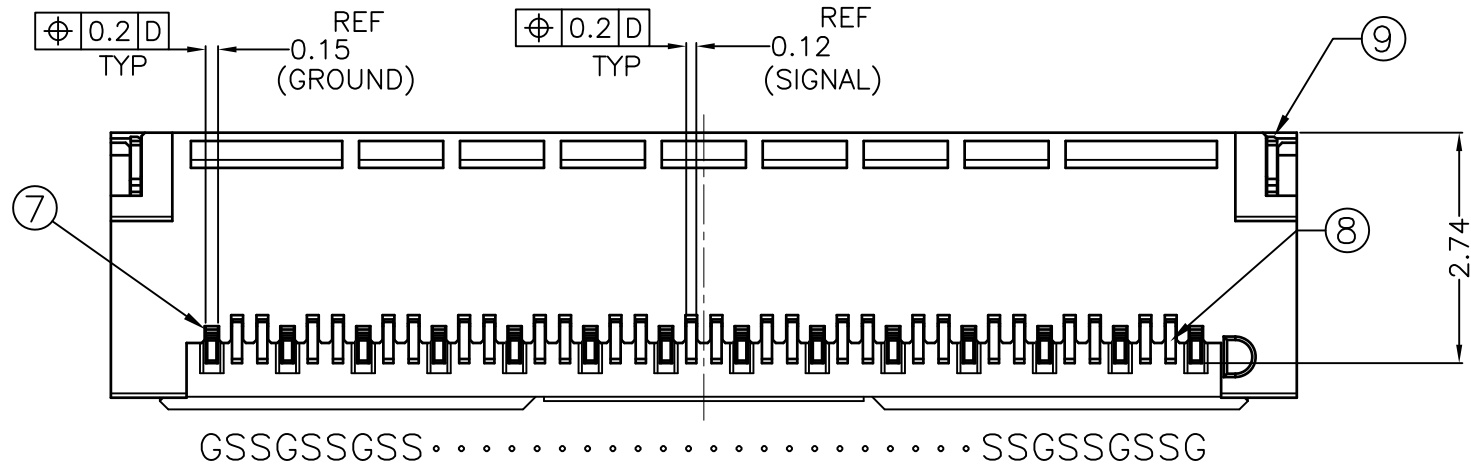
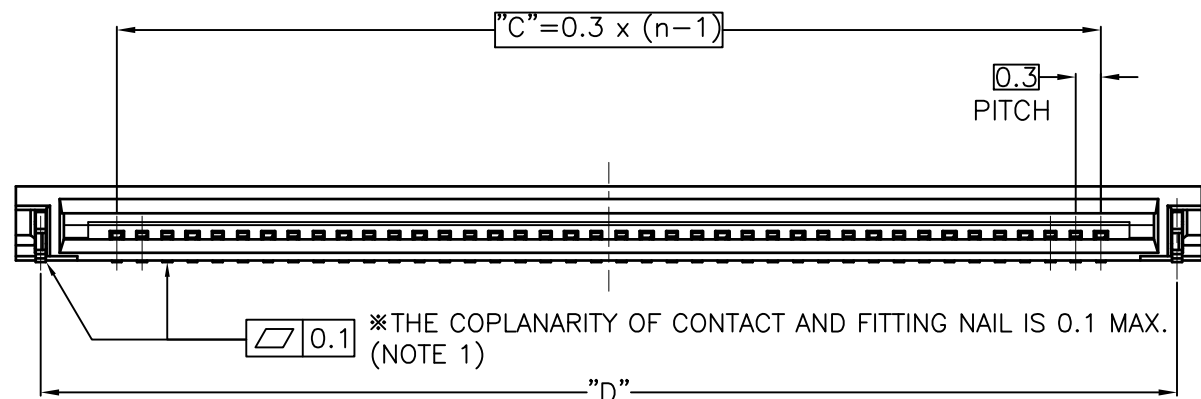
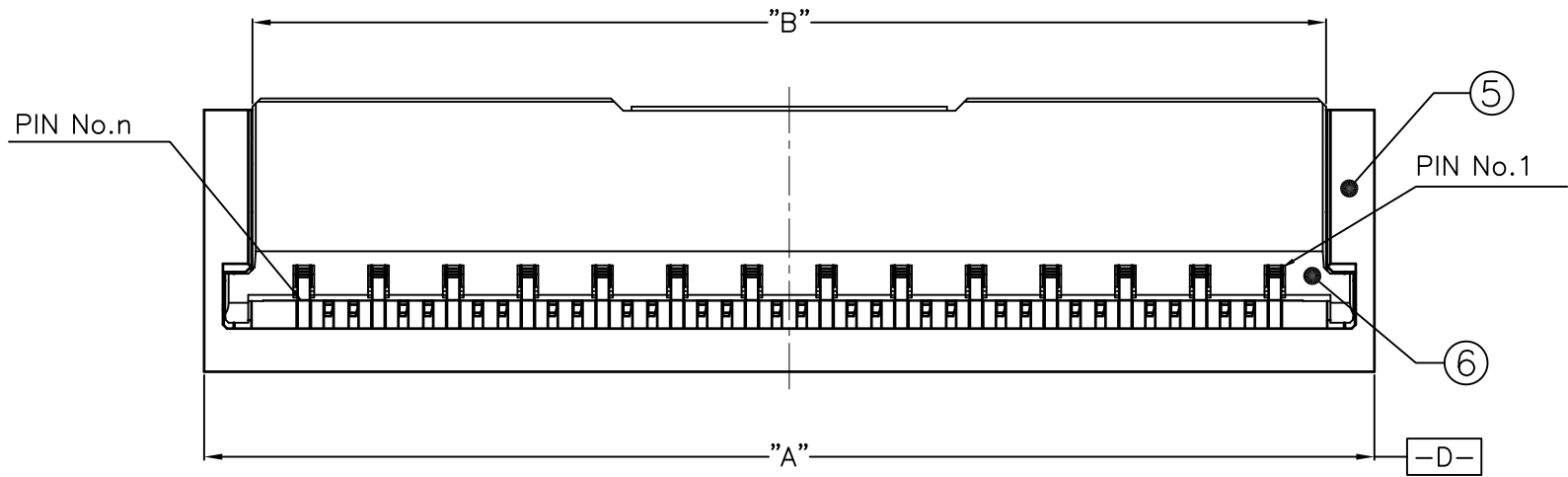


CONNECTOR ASSY



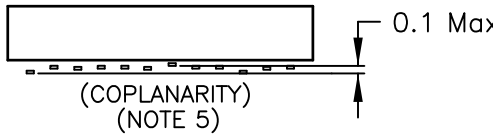
| PARTS TABLE (CONNECTOR) | | | n=Number of Contacts |
|-------------------------|----------------|------|---|
| No. | PART NAME | QTY. | NOTE |
| 5 | HOUSING | 1 | HIGH TEMP THERMOPLASTIC LCP XXXXXXXXXX COLOR : BLACK , UL94V-0, HALOGEN FREE |
| 6 | ACTUATOR | 1 | HIGH TEMP THERMOPLASTIC PPS XXXXXXXXXX COLOR : BLACK , UL94V-0, HALOGEN FREE |
| 7 | GROUND CONTACT | 14 | COPPER ALLOY (CORSON ALLOY) CONTACT AREA : Au 0.05um MIN SOLDERING AREA : Au 0.05um MIN UNDER PLATING : Ni 3±2um ALL OVER |
| 8 | SIGNAL CONTACT | 26 | COPPER ALLOY (PHOSPHOR BRONZE) CONTACT AREA : Au 0.05um MIN SOLDERING AREA : Au 0.05um MIN UNDER PLATING : Ni 3±2um ALL OVER |
| 9 | FIXING TAB | 2 | COPPER ALLOY (PHOSPHOR BRONZE) TIN PLATING 2~5um UNDER PLATING : Ni 3±2um ALL OVER |

NOTE

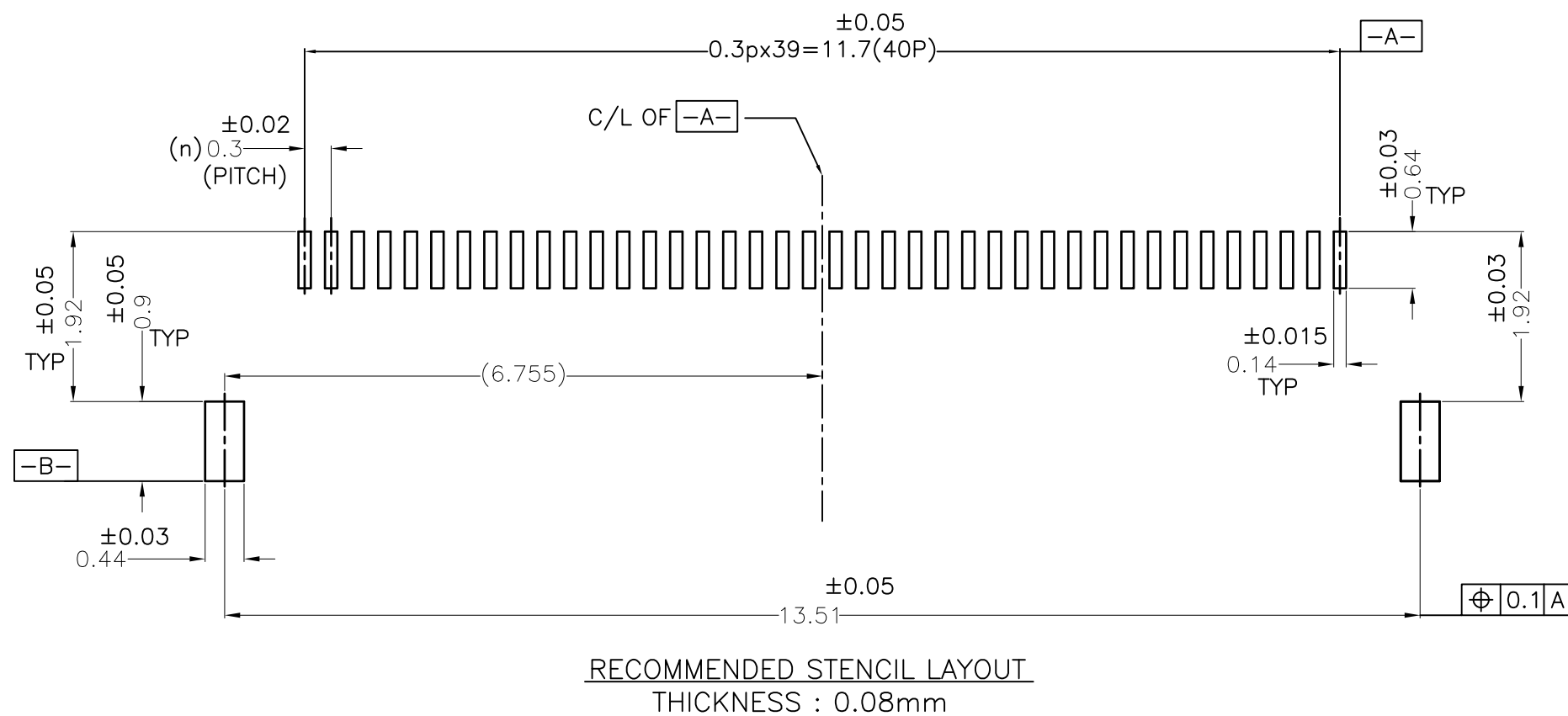
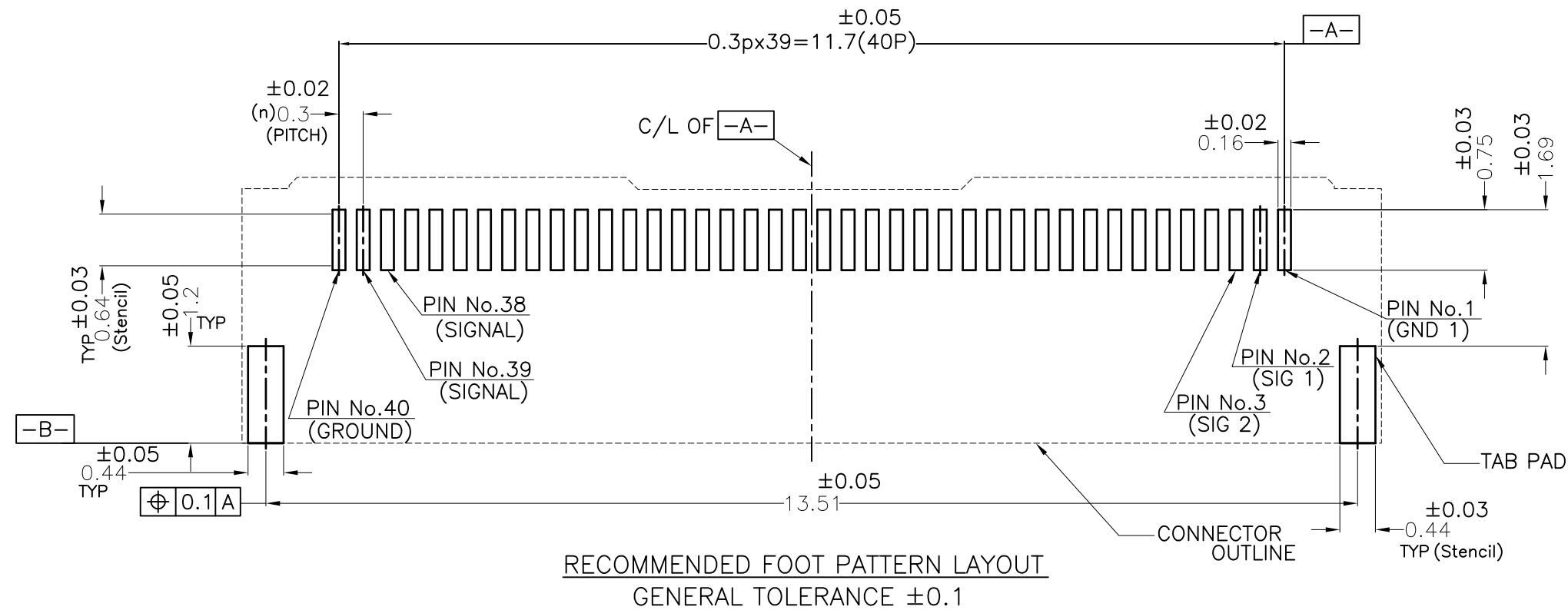
5. CONTACT COPLANARITY : 0.1 MAX.


6. This product meets European Union Directives and other country regulations as described in GS-47-0004

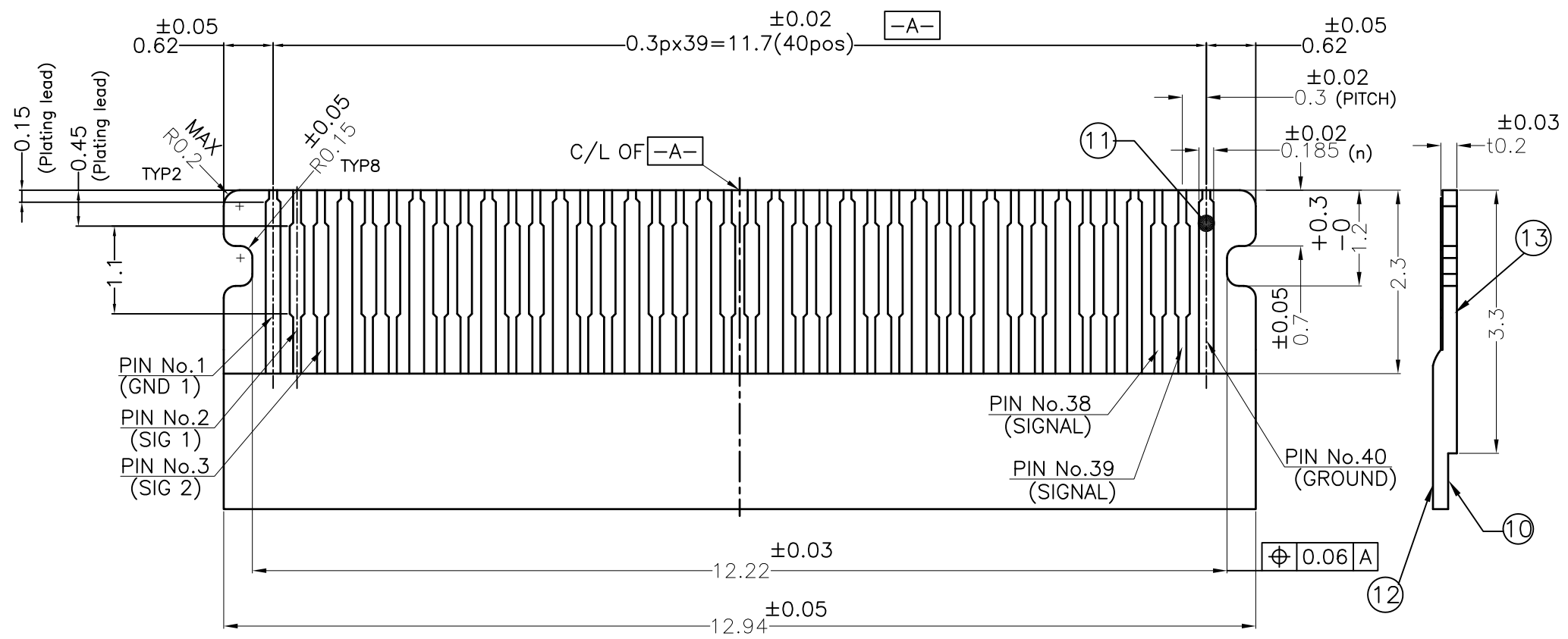
7. THIS HOUSING WILL WITHSTAND EXPOSURE TO 260DegC PEAK TEMPERATURE FOR 10 SECONDS IN A CONVECTION,INFRA-RED OR VAPOR PHASE REFLOW OVEN.



| | | | | | | | |
|----------------|--|-------------|------------|------------|----------------------------------|---------|--------------------------|
| AVAILABLE | | 40 | 13.51 | 11.7 | 12.935 | 14.1 | 10131287-40HSAHLF |
| TOOLING STATUS | | No.of Cont | DIM "D" | DIM "C" | DIM "B" | DIM "A" | PRODUCT NO. |
| mat'l. code | | surface | tolerance | projection | product family | | |
| --- | | ISO 1302 | ISO 406 | ISO 1101 | 58WF | | |
| lfr | | ecn no | dr | date | title | | |
| A | | N.S | 2015-09-14 | angles | 0.3mm PITCH HSFPC CONNECTOR ASSY | | |
| B | | ELX-J-23664 | N.S | 2016-03-30 | (XXXXX SERIES) | | |
| C | | ELX-J-26134 | N.S | 2017-02-21 | scale 10:1 | | |
| | | | | dr | N.SASAME | | |
| | | | | engr | N.SASAME | | |
| | | | | chr | H.SUZUKI | | |
| | | | | appd | Y.KAMEDA | | |
| sheet | | revision | | | dwg no | | sheet 2 of 4 |
| index | | sheet | | | 10131287 | | A2 |
| | | | | | type | | PRODUCT CUSTOMER Drawing |
| | | | | | | | Rev. C |



| | | | | | | | | | | | | | | | | | | | |
|--------------------|--|----------------|--|-----------------------|--|----------------------------------|--|---|--|------------------------|--|------------------------------------|--|---|--|--------------|--|-----------|--|
| mat'l. code --- | | | | surface ISO 1302 ✓ | | tolerance ISO 406 ISO 1101 | | projection  | | product family 58WF | | | | | | | | | |
| ltr | | ecn no | | dr | | date | | tolerances unless otherwise specified | | file | | | | | | | | | |
| A | | | | N.S | | 2015-09-14 | | <div>angles</div> <div>linear</div> <div>mm</div> | | O.X | | ±0.3 | | 0.3mm PITCH HSFPCC CONNECTOR ASSY (XXXXX SERIES) | | | | | |
| B | | ELX-J-23664 | | N.S | | 2016-03-30 | | | | O.XX | | ±0.3 | | | | | | | |
| C | | ELX-J-26134 | | N.S | | 2017-02-21 | | | | ±3° | | O.XXX | | | | ±0.3 | | | |
| | | | | | | | | | | scale 10:1 | | | | | | | | | |
| | | | | | | dr | | N.SASAME | | 2017-02-21 | | <div>Amphenol</div> <div>FCI</div> | | dwg no | | sheet 3 of 4 | | size | |
| | | | | | | engr | | N.SASAME | | 2017-02-21 | | | | | | | | | |
| | | | | | | chr | | H.SUZUKI | | 2017-02-21 | | | | | | 10131287 | | A2 | |
| | | | | | | appd | | Y.KAMEDA | | 2017-02-21 | | | | | | | | | |
| sheet index | | revision sheet | | | | | | | | | | | | | | | | Rev. C | |



RECOMMENDED FPC PATTERN LAYOUT
GENERAL TOLERANCE ± 0.1

PARTS TABLE (FPC)

| No. | PART NAME | MATERIAL |
|-----|-----------------|----------------------------------|
| 10 | BASE FILM | POLYIMIDE |
| 11 | CONDUCTOR | COPPER FOIL (PLATING : Au 0.1um) |
| 12 | OVER LAY | POLYIMIDE |
| 13 | STIFFENER BOARD | POLYIMIDE |

NOTE
8. ADHESIVE METHOD OF STIFFENER BOARD SHALL BE HEAT CRIMPING METHOD AND THERMOSETTING ADHESIVE SHALL BE USED.

| | | | | | | | |
|-------------|-------------|-----|------------|----------|-----------|------------|----------------------------------|
| mat'l. code | | | | surface | tolerance | projection | product family |
| --- | | | | ISO 1302 | ISO 406 | mm | 58WF |
| ltr | | | | ecn no | dr | date | title |
| A | | N.S | 2015-09-14 | | | | 0.3mm PITCH HSFPC CONNECTOR ASSY |
| B | ELX-J-23664 | N.S | 2016-03-30 | | | | (XXXXX SERIES) |
| C | ELX-J-26134 | N.S | 2017-02-21 | | | | dwg no |
| | | | | dr | N.SASAME | 2017-02-21 | sheet 4 of 4 |
| | | | | enfr | N.SASAME | 2017-02-21 | size |
| | | | | chr | H.SUZUKI | 2017-02-21 | 10131287 |
| | | | | appd | Y.KAMEDA | 2017-02-21 | A2 |
| sheet index | | | | revision | sheet | | type |
| | | | | | | | PRODUCT CUSTOMER Drawing |
| | | | | | | | Rev. C |