
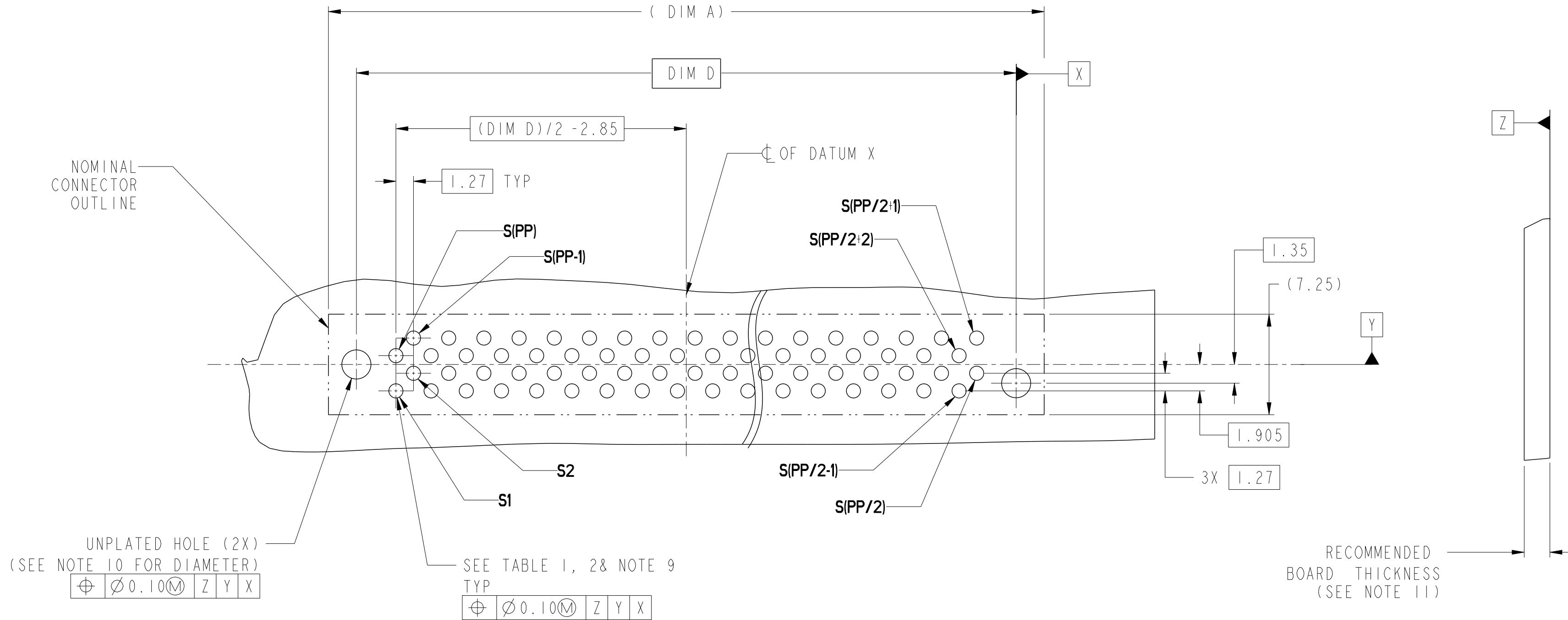




SECTION B-B
SCALE 4:1

spec ref		-		dr		Eric Jiang		2013/02/04		projection		size		scale	
tolerance std		TOLERANCES UNLESS OTHERWISE SPECIFIED		eng		Sunny2 Liu		2016/05/05				MM		A2 4:1	
ASME Y14.5				chr		Terris Liu		2016/05/20							
				appr		Pei-Ming Zheng		2016/05/24		product family		ecn no		ELX-DG-24036-1	
												rel level		Released	
surface		linear		Amphenol FCI		title		VERT RECT (ALL SIGNAL PINS) HIGH POWER CARD EDGE		dwg no		10123730		rev	
ASME Y14.5		angular													

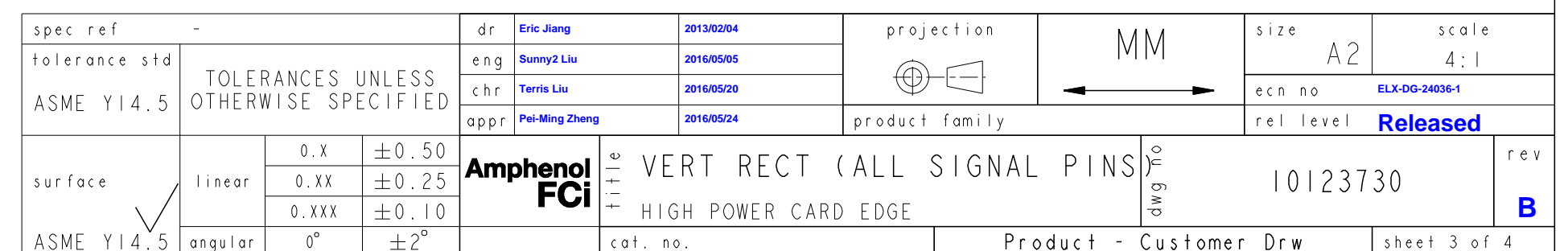
CONTACT TYPE	TOP LAYER DESCRIPTION	TABLE 1 (HPCE / SOLDER TAILS) PLATED THROUGH-HOLE REQUIREMENTS				
		DRILLED HOLE DIAMETER	COPPER THICKNESS	TIN-LEAD THICKNESS	TIN THICKNESS	FINISHED HOLE DIAMETER
POWER & SIGNAL	TIN-LEAD	1.10-1.16 (1.15 DRILL)	0.025 - 0.050	0.005 - 0.015	--	0.94 - 1.10
	IMMERSION TIN	1.10-1.16 (1.15 DRILL)	0.025 - 0.050	--	0.9 - 1.5um	0.94 - 1.10
	COPPER (SEE NOTE 8)	1.10-1.16 (1.15 DRILL)	0.025 - 0.050	--	--	0.94 - 1.10

CONTACT TYPE	TOP LAYER DESCRIPTION	TABLE 2 (HPCE / PRESS-FIT TAILS) PLATED THROUGH-HOLE REQUIREMENTS				
		DRILLED HOLE DIAMETER	COPPER THICKNESS	TIN-LEAD THICKNESS	TIN THICKNESS	FINISHED HOLE DIAMETER
POWER & SIGNAL	TIN-LEAD	0.81-0.86 (0.85 DRILL)	0.025 - 0.050	0.005 - 0.015	--	0.65 - 0.80
	IMMERSION TIN	0.81-0.86 (0.85 DRILL)	0.025 - 0.050	--	0.9 - 1.5um	0.70 - 0.80
	COPPER (SEE NOTE 8)	0.81-0.86 (0.85 DRILL)	0.025 - 0.050	--	--	0.70 - 0.80



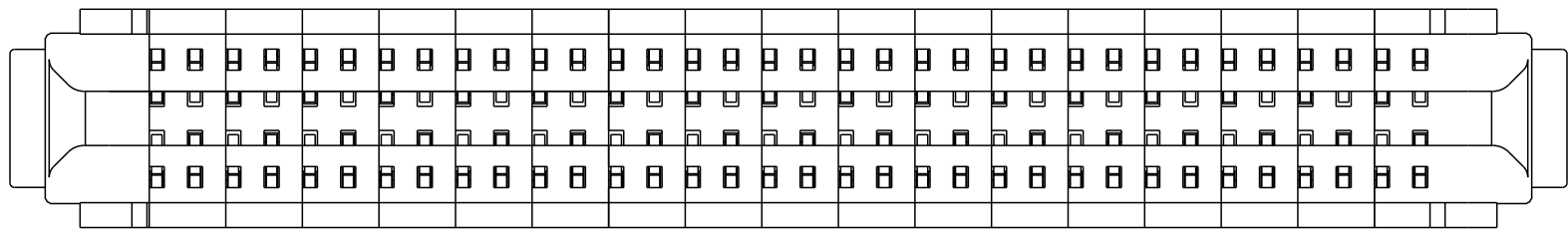
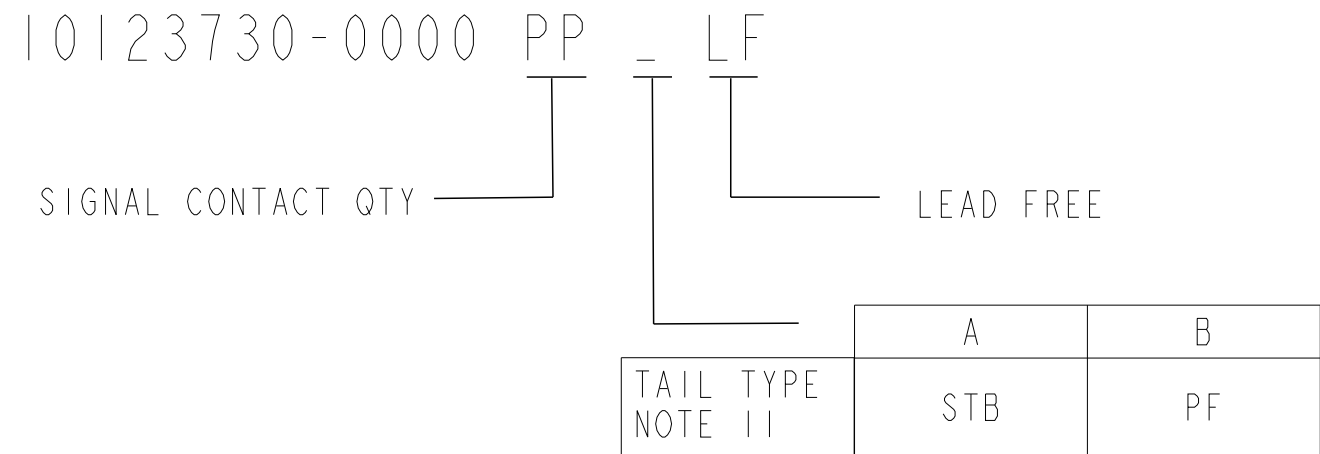
spec ref		-		dr		Eric Jiang		2013/02/04		projection		MM		size		A2		scale		4:1	
tolerance std		TOLERANCES UNLESS OTHERWISE SPECIFIED		eng		Sunny2 Liu		2016/05/05						ecn no		ELX-DG-24036-1					
ASME Y14.5				chr		Terris Liu		2016/05/20						rel level		Released					
				appr		Pei-Ming Zheng		2016/05/24		product family											
surface		linear		0.X ±0.50		Amphenol FCI		title		VERT RECT (ALL SIGNAL PINS)		dwg no		10123730		rev		B			
																				0.XX ±0.25	
																				0.XXX ±0.10	
ASME Y14.5		angular		0° ±2°				cat. no.		Product - Customer Drw				sheet 2 of 4							

© 2016 AFCI



Printed: May 24, 2016

A
B
C
D
E
F



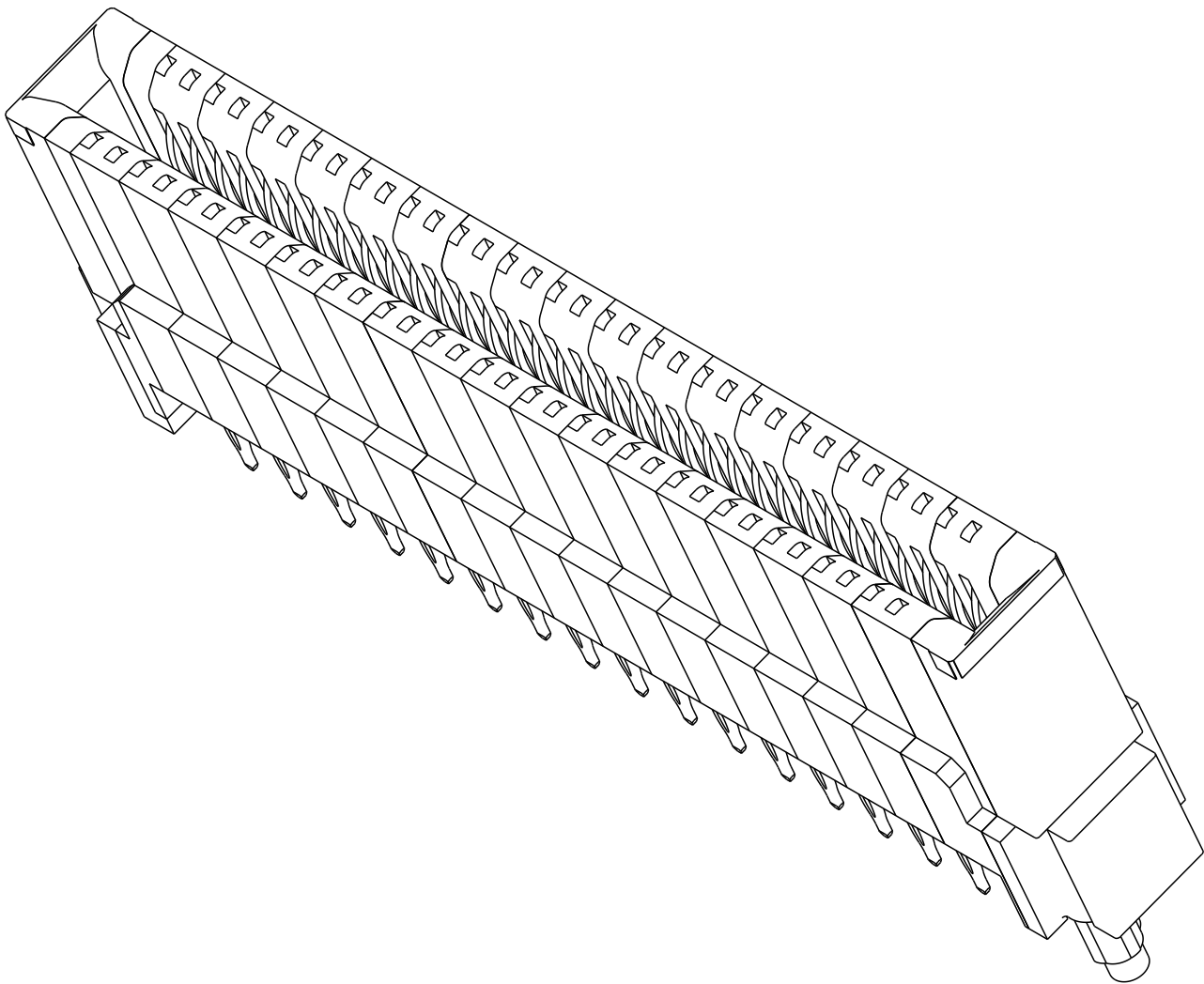
EXAMPLE: THE CONFIGURATION ABOVE IS 10123730-000068ALF
STB VERT REC 68S

TABLE 3: PART NUMBER CODE, HPCE STD VERT REC S CONFIG

NOTES:

1. CONNECTOR MATERIALS:
- HOUSING: HIGH TEMPERATURE THERMAL PLASTIC, BLACK
UL 94V-0 COMPLIANT
- CONTACTS: HIGH PERFORMANCE COPPER ALLOY.
2. CONTACT FINISH REF. GS-12-604 SECTION 5.2.
3. PRODUCT SPECIFICATION: GS-12-604.
4. APPLICATION SPECIFICATION: GS-20-128.
5. PRODUCT MARKING ON HOUSING IN AREA SHOWN MEETS AFCI SPECIFICATION: GS-24-007.
6. PACKAGING MEETS FCI SPECIFICATION GS-14-937.
7. HOUSING COMPONENT WILL WITHSTAND EXPOSURE TO 260°C PEAK TEMPERATURE FOR 60 SECONDS IN A CONVECTION, INFRA-RED, OR VAPOR PHASE REFLOW OVEN.
8. COPPER PLATING THICKNESS IN CENTER OF VIA-HOLE CAN BE NO MORE THAN 0.003 LESS THAN OTHER AREAS.
9. ALL HOLE SIZES ARE FINISHED HOLE SIZES.
10. MOUNTING HOLES ARE UNPLATED
Ø 2.40 +/- 0.1 FOR PRESS-FIT TAILS
Ø 2.18 +/- 0.03 FOR SOLDER TAILS
11. STB=SOLDER TO BOARD, 1.57-2.38mm PCB THICKNESS.
PF=PRESS FIT, 1.57mm MINIMUM PCB THICKNESS.
12. A SYMBOL WILL BE NEXT TO ANY DIMENSION, VIEW, OR NOTE WHICH HAS BEEN MODIFIED WITH THE CURRENT DRAWING REVISION.

DIM	TABLE 2 LENGTH FORMULAS
DIM A	(PP/2)X1.27+8.47
DIM B	DIM A -5.00
DIM C	DIM A -2.34
DIM D	DIM A -4.04
DIM E	DIM A -5.30



spec ref	-	dr	Eric Jiang	2013/02/04	projection	MM	size	A2	scale	4:1
tolerance std	ASME Y14.5	eng	Sunny2 Liu	2016/05/05	chr	Terris Liu	ecn no	ELX-DG-24036-1		
		appr	Pei-Ming Zheng	2016/05/24	product family		rel level	Released		
surface	linear	0.X	±0.50	0.XX	±0.25	0.XXX	±0.10	angular	0°	±2°
ASME Y14.5										
		Amphenol FCI		title		VERT RECT (ALL SIGNAL PINS)		no		10123730
						HIGH POWER CARD EDGE		rev		B
				cat. no.		Product - Customer Drw		sheet 4 of 4		

A
B
C
D
E
F