


F  
E  
D  
C  
B  
A

F  
E  
D  
C  
B  
A

RELEASE EC NO: IPG2016-1217 DRWN: VOU 2016/04/13 CHKD: MZIELINS 2016/04/15 APPR: JFMURPHY 2016/05/03	DESCRIPTION REV	QUALITY SYMBOLS <div>▽=0</div> <div>▽C=0</div>	GENERAL TOLERANCES (UNLESS SPECIFIED)			DIMENSION STYLE INCH/MM		SCALE NTS	DESIGN UNITS INCH	 THIRD ANGLE PROJECTION	EA BALANCER SERIES SPECIFICATION -----  MOLEX INCORPORATED					
				mm	INCH	DRAWN BY	DATE	TITLE								
			4 PLACES	±---	±---	VOU	2016/04/13	MOLEX								
			3 PLACES	±---	±.005	CHECKED BY	DATE									
			2 PLACES	±0.13	±.010	DT	2010/05/10	MOLEX								
			1 PLACE	±0.25	±.020	APPROVED BY	DATE									
			ANGULAR ±.5°			JFMURPHY	2016/05/03	DOCUMENT NO.								
			DRAFT WHERE APPLICABLE MUST REMAIN WITHIN DIMENSIONS			MATERIAL NO. SEE CHART		SD-130172-003					SHEET NO. 1 OF 3			
						SIZE B	THIS DRAWING CONTAINS INFORMATION THAT IS PROPRIETARY TO MOLEX INCORPORATED AND SHOULD NOT BE USED WITHOUT WRITTEN PERMISSION									

F

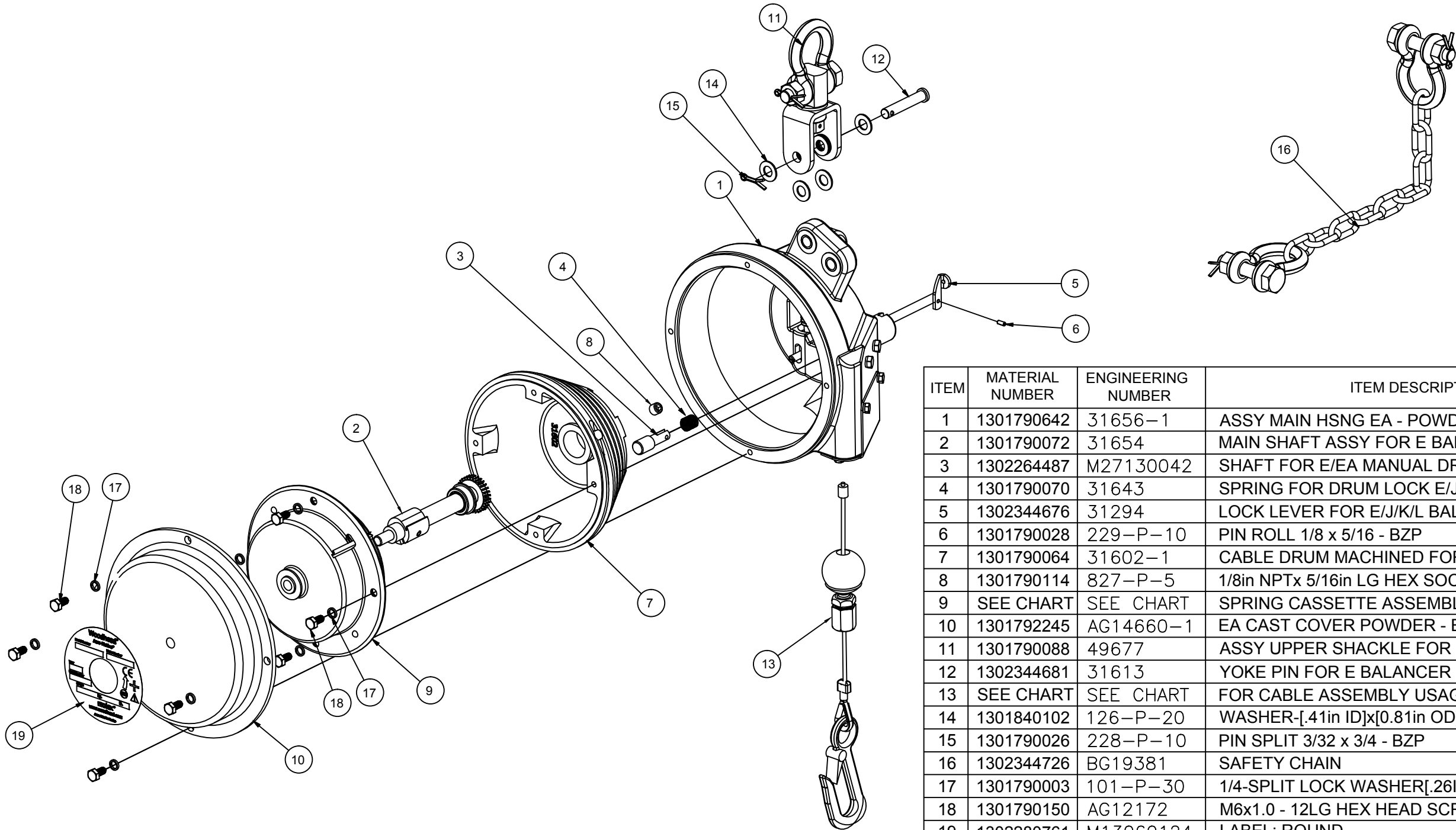
E

D

C

B




A



NOTES:

1. BALANCERS ARE 100% INSPECTED & PRE-TENSIONED TO MAX. WEIGHT.
2. HOUSINGS ARE MADE FROM ALUMINUM CASTING.THEY ARE POWDER COATED TO MEET HARSH INDUSTRIAL ENVIRONMENTS.
3. ALWAYS READ INSTRUCTIONS MANUAL BEFORE USING BALANCERS.
4. BALANCERS ARE NOT TO BE USED AS RETRACTORS THEIR MAIN PURPOSE BEING TO BALANCE A LOAD AND NOT TO RETRACT ONE.
5. OVERALL DIMENSIONS ARE FOR REFERENCE ONLY.
6. STANDARD CATALOG BALANCERS ARE EQUIPPED WITH SAFETY CHAIN BUT IF APPLICATION REQUIRES NO SAFETY CHAIN ADD "D" SUFFIX TO STANDARD BALANCER P/N. EXAMPLE 30EAD.
7. WHEN MOUNTING BALANCER, ALWAYS MAKE SURE THAT SAFETY PIN WHICH COMES WITH SHACKLE IS INSTALLED & SECURED.

ITEM	MATERIAL NUMBER	ENGINEERING NUMBER	ITEM DESCRIPTION
1	1301790642	31656-1	ASSY MAIN HSNG EA - POWDER XXXX
2	1301790072	31654	MAIN SHAFT ASSY FOR E BALANCER
3	1302264487	M27130042	SHAFT FOR E/EA MANUAL DRUM LOCK
4	1301790070	31643	SPRING FOR DRUM LOCK E/J/K/L
5	1302344676	31294	LOCK LEVER FOR E/J/K/L BALANCERS
6	1301790028	229-P-10	PIN ROLL 1/8 x 5/16 - BZP
7	1301790064	31602-1	CABLE DRUM MACHINED FOR E BALANCER
8	1301790114	827-P-5	1/8in NPTx 5/16in LG HEX SOCKET PLUG BZP
9	SEE CHART	SEE CHART	SPRING CASSETTE ASSEMBLY
10	1301792245	AG14660-1	EA CAST COVER POWDER - BLUE
11	1301790088	49677	ASSY UPPER SHACKLE FOR E BALANCERS
12	1302344681	31613	YOKE PIN FOR E BALANCER
13	SEE CHART	SEE CHART	FOR CABLE ASSEMBLY USAGE SEE CHART
14	1301840102	126-P-20	WASHER-[.41in ID]x[0.81in OD]x[.06in TK]
15	1301790026	228-P-10	PIN SPLIT 3/32 x 3/4 - BZP
16	1302344726	BG19381	SAFETY CHAIN
17	1301790003	101-P-30	1/4-SPLIT LOCK WASHER[.26ID/.50D/.06W]
18	1301790150	AG12172	M6x1.0 - 12LG HEX HEAD SCREW
19	1302280761	M13060124	LABEL; ROUND

RELEASE EC NO: IPG2016-1217 DRWN: VOU 2016/04/13 CHKD: MZIELINS 2016/04/15 APPR: JFMURPHY 2016/05/03  A		DESCRIPTION REV	QUALITY SYMBOLS	GENERAL TOLERANCES (UNLESS SPECIFIED)			DIMENSION STYLE INCH/MM		SCALE NTS	DESIGN UNITS INCH	THIRD ANGLE PROJECTION 				
			 =0  =0		mm	INCH	DRAWN BY VOU	DATE 2016/04/13	EA BALANCER SERIES SPECIFICATION ----						
				4 PLACES	±---	±---	CHECKED BY DT	DATE 2010/05/10							
				3 PLACES	±---	±.005	APPROVED BY JFMURPHY 2016/05/03			molex MOLEX INCORPORATED					
				2 PLACES	±0.13	±.010									
				1 PLACE	±0.25	±.020	DOCUMENT NO. SD-130172-003						SHEET NO. 2 OF 3		
			ANGULAR ±.5°												
			DRAFT WHERE APPLICABLE MUST REMAIN WITHIN DIMENSIONS			MATERIAL NO. SEE CHART									
						SIZE B	THIS DRAWING CONTAINS INFORMATION THAT IS PROPRIETARY TO MOLEX INCORPORATED AND SHOULD NOT BE USED WITHOUT WRITTEN PERMISSION								

F

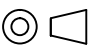
E

D

C

B

A

	10	9	8	7	6	5	4	3	2	1							
F											F						
E	BALANCER MODEL:		WEIGHT RANGE		CABLE TRAVEL		ITEM #9:		ITEM #13:								
	MATERIAL NUMBER	ENGINEERING NUMBER	LBS.	KG.	FT	M	MATERIAL NUMBER	ENG. NUMBER	MATERIAL NUMBER	ENG. NUMBER							
	1301720020	10EA	5.0 - 11.0	2.3 - 5.0	6.0	1.8	1301790746	41912	1301790158	AG12853							
	1301720103	20EA	11.0 - 20.0	5.0 - 9.0	6.0	1.8	1301790739	31659-20	1301790158	AG12853							
	1301720152	30EA	20.0 - 31.0	9.0 - 14.0	6.0	1.8	1301790077	31659-30	1301790158	AG12853							
	1301720184	40EA	29.0 - 40.0	13.0 - 18.0	6.0	1.8	1301790740	31659-40	1301790158	AG12853							
D	1301720195	50EA	40.0 - 51.0	18.0 - 23.0	6.0	1.8	1301790078	31659-50	1301790158	AG12853							
	1301720207	60EA	51.0 - 62.0	23.0 - 28.0	6.0	1.8	1301790741	31659-60	1301790158	AG12853							
C											C						
B											B						
A	<div>RELEASE</div> <div>EC NO: IPG2016-1217</div> <div>DRWN: VOU 2016/04/13</div> <div>CHKD: MZIELINS 2016/04/15</div> <div>APPR: JFMURPHY 2016/05/03</div>				DESCRIPTION	REV	QUALITY SYMBOLS	GENERAL TOLERANCES (UNLESS SPECIFIED)			DIMENSION STYLE		SCALE	DESIGN UNITS	 THIRD ANGLE PROJECTION		
											INCH/MM		NTS	INCH			
											DRAWN BY		DATE		EA BALANCER SERIES SPECIFICATION		
											VOU		2016/04/13				
											CHECKED BY		DATE		MOLEX INCORPORATED		
											DT		2010/05/10				
											APPROVED BY		DATE		SD-130172-003		
											JFMURPHY		2016/05/03				
											MATERIAL NO.				3 OF 3		
											SEE CHART						
			SIZE B		THIS DRAWING CONTAINS INFORMATION THAT IS PROPRIETARY TO MOLEX INCORPORATED AND SHOULD NOT BE USED WITHOUT WRITTEN PERMISSION												
10	9	8	7	6	5	4	3	2	1								