

4

3

2

1

THIS DRAWING IS UNPUBLISHED.

RELEASED FOR PUBLICATION

© COPYRIGHT

ALL RIGHTS RESERVED.

LOC

DIST


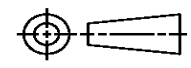
REVISIONS

P	LTR	DESCRIPTION	DATE	DWN	APVD

REPLACED BY OCEAN STYLE APPLICATOR PART NUMBER

FOR REPLACEMENT PARTS FOR APPLICATOR REFER TO ADDITIONAL PAGE(S). SPARE PARTS KIT (IF LISTED) WILL REMAIN AVAILABLE.

THE REPLACEMENT OCEAN STYLE APPLICATOR HAS THE SAME TERMINATOR/PRESS INTERFACE AS APPLICATOR

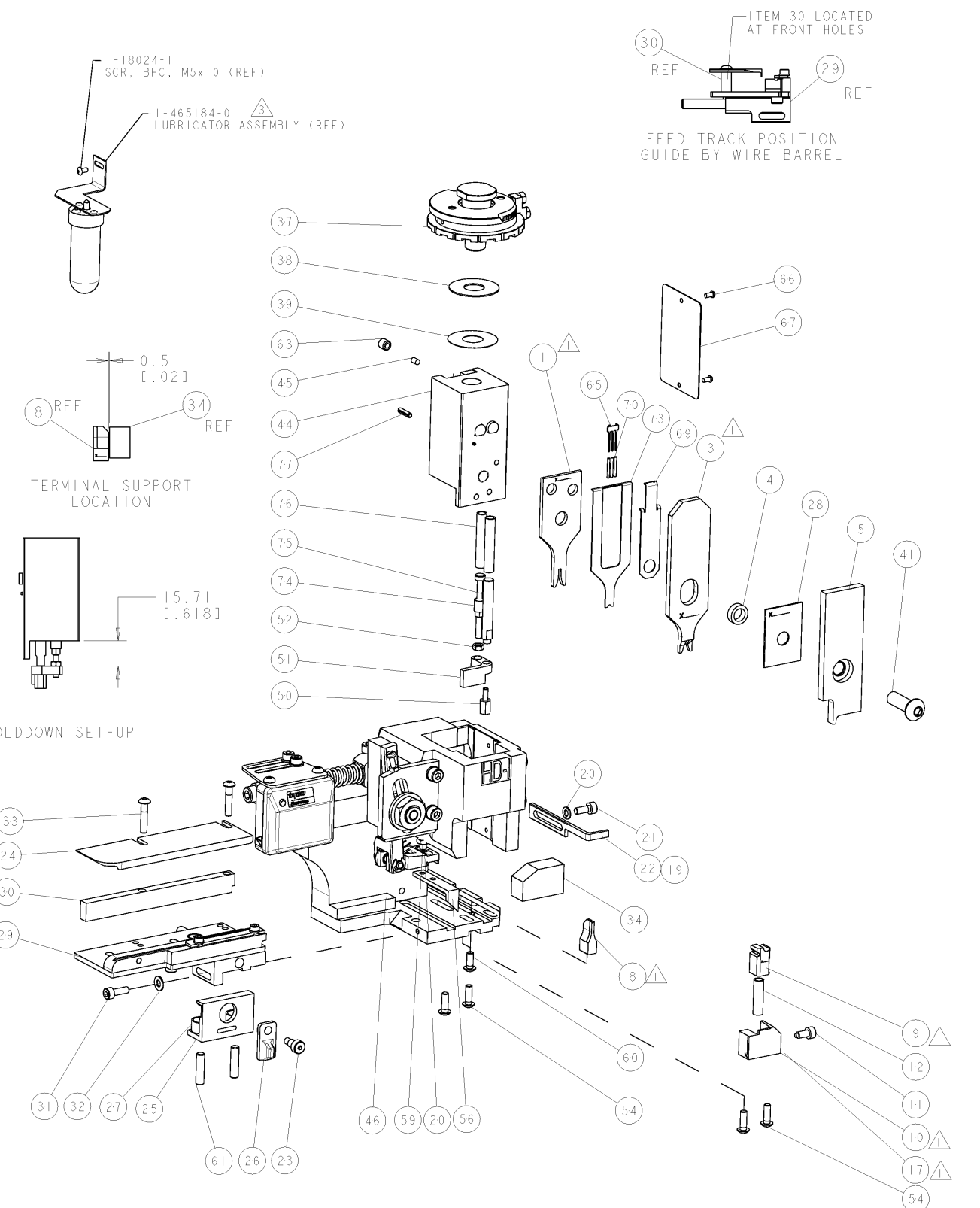
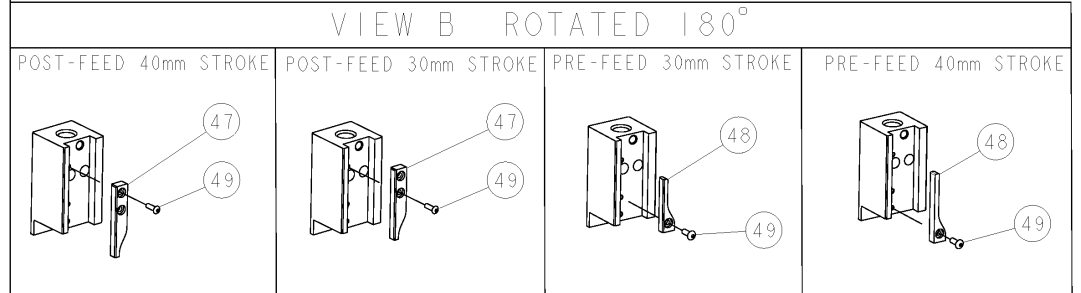
THIS DRAWING IS A CONTROLLED DOCUMENT.		DWN	 TE Connectivity		
DIMENSIONS:		CHK			
TOLERANCES UNLESS OTHERWISE SPECIFIED:		APVD	NAME		
 0 PLC ± 1 PLC ± 2 PLC ± 3 PLC ± 4 PLC ± ANGLES ±		PRODUCT SPEC	RESTRICTED TO		
		APPLICATION SPEC	SIZE	CAGE CODE	DRAWING NO
MATERIAL	FINISH	WEIGHT	A3	C-	
		SCALE	SHEET	OF	REV

PART NUMBER	REV	TERMINATOR	FEED TYPE	DESCRIPTION
1528699-1	B	LEADMAKER	MECH POST FEED	CUTS CARRIER
1528699-2	B	BENCH	MECH PRE FEED	CUTS CARRIER
1528699-6	B	LEADMAKER	MECH POST FEED	CONTINUOUS CARRIER
7-1528699-1	B	LEADMAKER	MECH POST FEED	-1 AND SPARE PARTS
7-1528699-2	B	BENCH	MECH PRE FEED	-2 AND SPARE PARTS
7-1528699-6	B	LEADMAKER	MECH POST FEED	-6 AND SPARE PARTS
7-1528699-7	A	-	-	SPARE PARTS KIT

CRIMP DATA		TYCO TERMINAL	TYCO CRIMP SPEC
TERMINAL NAME: GET FEMALE TERMINAL 1.2MM			
CRIMP	SIZE	TYPE	RANGE
WIRE	1.57 [0.062 IN]	F	0.50-0.75mm ² or 20-18 AWG
INSUL	1.83 [0.072 IN]	SPECIAL	1.40-1.90 [0.055-0.075 IN]
WIRE STRIP LENGTH SEE APPL SPEC		APPL INSTRUCTIONS 408-8322 & 408-8490	
TERMINAL APPL SPEC	114-18774	FEED	8.00 [0.315 IN]
TERMINALS APPLIED			
1719958	-	-	-
-	-	-	-
-	-	-	-
-	-	-	-
WIRE SIZE	CRIMP HEIGHT	REF SETTING	
18 AWG	1.04 ± 0.03 [0.041 ± 0.001 IN]	B3	
0.75mm ²	1.02 ± 0.03 [0.040 ± 0.001 IN]	B6	
20 AWG	0.89 ± 0.03 [0.035 ± 0.001 IN]	C4	
0.50mm ²	0.89 ± 0.03 [0.035 ± 0.001 IN]	C5	

- △ RECOMMENDED SPARE PARTS.
- 2. GREASE RAM, CAM, CAM FOLLOWER AND FEED ROD LIGHTLY.
- △ CERTAIN TERMINALS REQUIRE LUBRICATION. REFER TO THE APPLICATOR INSTRUCTION SHEET FOR MORE INFORMATION.
- 4. LUBRICATE DAILY PER THE APPLICATOR INSTRUCTION SHEET SUPPLIED WITH THE APPLICATOR.
- △ INSULATION CRIMP HEIGHT NOT TO EXCEED 2.10mm FOR ALL WIRE SIZES.
- △ WIDTH OF TERMINAL, ALONG ITS ENTIRE LENGTH, MUST NOT EXCEED 2.05mm.

* WARNING
ON INSTALLATION, SET WIRE DISC TO LARGEST WIRE SIZE SETTING. USE OF SETTINGS BELOW MIN. REQUIRED CRIMP HEIGHT SETTING WILL CAUSE DAMAGE TO CRIMP TOOLING.



SET UP GAGE		LOC	DIST	REVISIONS				
458637-3		A	66	REV	DESCRIPTION	DATE	BY	APPV
A	SEE ECO-07-011558					10MAY2007	MC	MC
B	ECR-11-017641					26MAY2011	L.Z	S.X

-	-	-	-	-	-	-	-	1490525-3	DEPRESSOR, WIRE	73
-	-	-	-	-	-	-	-	-	-	72
-	-	-	-	-	-	-	-	1338705-3	DOCUMENTATION PACKAGE	71
-	3	3	3	3	3	3	3	1-23147-4	SPRING, COMPRESSION	70
-	-	-	-	-	-	-	-	1490524-1	DEPRESSOR, SPACER	69
-	-	-	-	-	-	-	-	-	-	68
-	-	-	-	-	-	-	-	461264-5	PLATE, IDENTIFICATION	67
-	2	2	2	2	2	2	2	21017-2	SCREW, DRIVE	66
-	-	-	-	-	-	-	-	1424350-1	HOLDER, PIN, WIRED	65
-	-	-	-	-	-	-	-	-	-	64
-	-	-	-	-	-	-	-	3-18031-0	SCR, SET, CUP POINT M6 X 6.0	63
-	-	-	-	-	-	-	-	-	-	62
-	2	2	2	2	2	2	2	2-18032-5	SCR, SET, FLT POINT M5 X 20.0	61
-	-	-	-	-	-	-	-	18024-7	SCR, BTN SKT HD CAP (M4 X 10.0)	60
-	-	-	-	-	-	-	-	5-18022-2	SCR, HEX HD CAP M4 X 8.0	59
-	-	-	-	-	-	-	-	-	-	58
-	-	-	-	-	-	-	-	-	-	57
-	-	-	-	-	-	-	-	1338685-1	PAWL, FEED	56
-	-	-	-	-	-	-	-	-	-	55
-	4	4	4	4	4	4	4	18024-8	SCR, BTN SKT HD CAP (M4 X 12.0)	54
-	-	-	-	-	-	-	-	-	-	53
-	-	-	-	-	-	-	-	1-18030-0	NUT, HEX, REG M3.5	52
-	-	-	-	-	-	-	-	1901681-1	HOLDDOWN, TERMINAL	51
-	-	-	-	-	-	-	-	1-1752354-8	STANDOFF, HOLD-DOWN	50
-	-	-	-	-	-	-	-	18024-3	SCR, BTN SKT HD CAP (M3 X 10.0)	49
-	-	-	-	-	-	-	-	1338675-1	CAM, UNIVERSAL PRE FEED	48
-	-	-	-	-	-	-	-	1338676-1	CAM, UNIVERSAL POST-FEED	47
-	-	-	-	-	-	-	-	1320999-3	APPLICATOR SUBASSEMBLY, HDI	46
-	-	-	-	-	-	-	-	690191-1	PLUG, NYLON	45
-	-	-	-	-	-	-	-	1633724-1	RAM, (SIDE FEED)	44
-	-	-	-	-	-	-	-	-	-	43
-	-	-	-	-	-	-	-	-	-	42
-	-	-	-	-	-	-	-	2-18024-6	SCR, BTN SKT HD CAP (M8 X 25.0)	41
-	-	-	-	-	-	-	-	-	-	40
-	-	-	-	-	-	-	-	690125-1	SHIM SUB-ASSY	39
-	-	-	-	-	-	-	-	469367-8	SHIM	38
-	-	-	-	-	-	-	-	879103-3	FINE ADJUST HEAD SUBASSY	37
-	-	-	-	-	-	-	-	-	-	36
-	-	-	-	-	-	-	-	-	-	35
-	-	-	-	-	-	-	-	1752356-6	SUPPORT, TERMINAL	34
-	2	2	2	2	2	2	2	1-18024-0	SCR, BTN SKT HD CAP (M4 X 20.0)	33
-	-	-	-	-	-	-	-	18027-2	WASHER, FLAT, REG M4	32
-	-	-	-	-	-	-	-	1-18023-2	SCR, SKT HD CAP M4 X 12.0	31
-	-	-	-	-	-	-	-	1320908-4	SPACER, STRIP GUIDE	30
-	-	-	-	-	-	-	-	1-1633073-8	STRIP GUIDE ASSEMBLY	29
-	-	-	-	-	-	-	-	455888-8	SPACER, CRIMPER	28
-	2	2	2	2	2	2	2	1-22284-0	SPRING, COMPRESSION	27
-	-	-	-	-	-	-	-	356835-1	LEVER, DRAG RELEASE	26
-	-	-	-	-	-	-	-	240792-1	DRAG, TERMINAL	25
-	-	-	-	-	-	-	-	1320928-1	PLATE, STRIP GUIDE	24
-	-	-	-	-	-	-	-	980371-4	SCR, SKT HD SHLDR 5.0 DIA X 6.0	23
-	-	-	-	-	-	-	-	690472-2	STRIPPER	22
-	-	-	-	-	-	-	-	1-18023-1	SCR, SKT HD CAP M4 X 10.0	21
-	2	2	2	2	2	2	2	18025-2	WASHER, SPRG LOCK, REG M4	20
-	-	-	-	-	-	-	-	690472-1	STRIPPER	19
-	-	-	-	-	-	-	-	-	-	18
-	-	-	-	-	-	-	-	1338684-1	HOLDER, SHEAR, NO-CUT	17
-	-	-	-	-	-	-	-	-	-	16
-	-	-	-	-	-	-	-	-	-	15
-	-	-	-	-	-	-	-	-	-	14
-	-	-	-	-	-	-	-	-	-	13
-	-	-	-	-	-	-	-	3-22280-3	SPRING, COMPRESSION	12
-	-	-	-	-	-	-	-	356885-4	STOP, SHEAR	11
-	-	-	-	-	-	-	-	1320921-1	SHEAR HOLDER, FRONT, CUT	10
-	-	-	-	-	-	-	-	1-462006-8	FLOATING SHEAR, FRONT	9
-	1	2	2	2	2	2	2	1333231-6	ANVIL, COMBINATION, SPECIAL	8
-	-	-	-	-	-	-	-	-	-	7
-	-	-	-	-	-	-	-	-	-	6
-	-	-	-	-	-	-	-	3-455889-6	DEPRESSOR, SHEAR	5
-	-	-	-	-	-	-	-	4-238011-2	BLOCK, CRIMPER SPACER	4
-	1	2	2	2	1	1	1	1752766-6	CRIMPER, INSULATION, SPECIAL	3
-	-	-	-	-	-	-	-	-	-	2
-	1	2	2	2	1	1	1	2-456403-6	CRIMPER, WIRE PREMIUM	1

-	-	-	-	-	-	-	-	-	-	84
-	-	-	-	-	-	-	-	-	-	83
-	-	-	-	-	-	-	-	-	-	82
-	-	-	-	-	-	-	-	-	-	81
-	-	-	-	-	-	-	-	-	-	80
-	-	-	-	-	-	-	-	-	-	79
-	-	-	-	-	-	-	-	-	-	78
-	-	-	-	-	-	-	-	993111-8	PIN, SLOTTED SPRING 3.0 X 12.0	77
-	2	2	2	2	2	2	2	3-22280-7	SPRING, COMPRESSION	76
-	-	-	-	-	-	-	-	1752353-1	GUIDE PIN, HOLDDOWN	75
-	-	-	-	-	-	-	-	1901680-1	GUIDE PIN, HOLDDOWN	74
-	-	-	-	-	-	-	-	-	-	73
-	-	-	-	-	-	-	-	-	-	72
-	-	-	-	-	-	-	-	-	-	71
-	-	-	-	-	-	-	-	-	-	70
-	-	-	-	-	-	-	-	-	-	69
-	-	-	-	-	-	-	-	-	-	68
-	-	-	-	-	-	-	-	-	-	67
-	-	-	-	-	-	-	-	-	-	66
-	-	-	-	-	-	-	-	-	-	65
-	-	-	-	-	-	-	-	-	-	64
-	-	-	-	-	-	-	-	-	-	63
-	-	-	-	-	-	-	-	-	-	62
-	-	-	-	-	-	-	-	-	-	61
-	-	-	-	-	-	-	-	-	-	60
-	-	-	-	-	-	-	-	-	-	59
-	-	-	-	-	-	-	-	-	-	58
-	-	-	-	-	-	-	-	-	-	57
-	-	-	-	-	-	-	-	-	-	56
-	-	-	-	-	-	-	-	-	-	55
-	-	-	-	-	-	-	-	-	-	54
-	-	-	-	-	-	-	-	-	-	53
-	-	-	-	-	-	-	-	-	-	52
-	-	-	-	-	-	-	-	-	-	51
-	-	-	-	-	-	-	-	-	-	50
-	-	-	-	-	-	-	-	-	-	49
-	-	-	-	-	-	-	-	-	-	48
-	-	-	-	-	-	-	-	-	-	47
-	-	-	-	-	-	-	-	-	-	46
-	-	-	-	-	-	-	-	-	-	45
-	-	-	-	-	-	-	-	-	-	44
-	-	-	-	-	-	-	-	-	-	43
-	-	-	-	-	-	-	-	-	-	42
-	-	-	-	-	-	-	-	-	-	41
-	-	-	-	-	-	-	-	-	-	40
-	-	-	-	-	-	-	-	-	-	39
-	-	-	-	-	-	-	-	-	-	38
-	-	-	-	-	-	-	-	-	-	37
-	-	-	-	-	-	-	-	-	-	36
-	-	-	-	-	-	-	-	-	-	35
-	-	-	-	-	-	-	-	-	-	34
-	-	-	-	-	-	-	-	-	-	33
-	-	-	-	-	-	-	-	-	-	32
-	-	-	-	-	-	-	-	-	-	31
-	-	-	-	-	-	-	-	-	-	30
-	-	-	-	-	-	-	-	-	-	29
-	-	-	-	-	-	-	-	-	-	28
-	-	-	-	-	-	-	-	-	-	27
-	-	-	-	-	-	-	-	-	-	26
-	-	-	-	-	-	-	-	-	-	25
-	-	-	-	-	-	-	-	-	-	24
-	-	-	-	-	-	-	-	-	-	23
-	-	-	-	-	-	-	-	-	-	22
-	-	-	-	-	-	-	-	-	-	21
-	-	-	-	-	-	-	-	-	-	20
-	-	-	-	-	-	-	-	-	-	19
-	-	-	-	-	-	-	-	-	-	18
-	-	-	-	-	-	-	-	-	-	17
-	-	-	-	-	-	-	-	-	-	16
-	-	-	-	-	-	-	-	-	-	15
-	-	-	-	-	-	-	-	-	-	14</