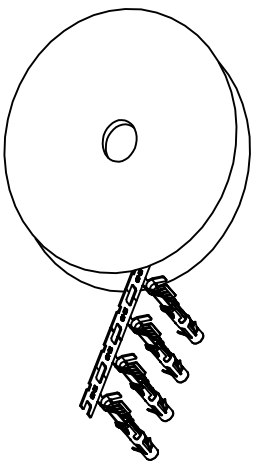


| REVISIONS | | | | |
|-----------|-----|------------------|-----------|------------|
| REV | ECO | DESCRIPTION | DATE | BY APPR |
| A1 | - | RELEASED DRAWING | Jul-16-18 | Flan Tommy |

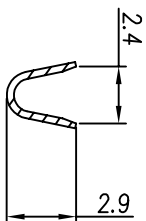


CONTACT ORIENTATION ON ROLL(3000PCS./COIL)

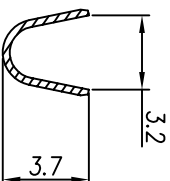
NOTES : (UNLESS OTHERWISE SPECIFIED)

1. MATERIAL :
 - 1.1. CONTACT BODY : COPPER ALLOY.
 - 1.2. OUTER SPRING : STAINLESS STEEL.
2. SPECIFICATIONS :
 - 2.1 CURRENT RATING : 13A MAX.
 - 2.2 TERMINATION TYPE : CRIMPING.
 - 2.3 WIRE RANGE : 16~18AWG.
 - 2.4 WIRE INSULATION DIA(MAX) : ϕ 3.2mm.
3. ROHS COMPLIANT.
4. ALL DIMENSIONS ARE FOR REFERENCE USE ONLY.
5. AVAILABLE TOOLS :
 - 5.1 HAND CRIMPER : MFX-3954.
 - 5.2 CRIMP APPLICATOR : MFX-3957.
 - 5.3 EXTRACTION TOOL : QXRT16.

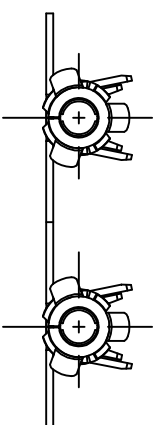
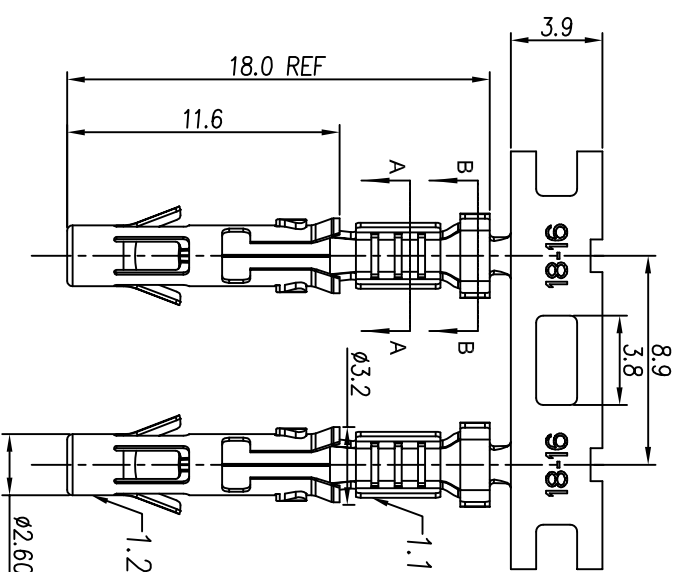
| P/N | CONTACT PLATING(MATING AREA) |
|-----------|-------------------------------------|
| SS16M2T | TIN PLATING OVER NICKEL. |
| SS16M2N | NICKEL PLATING OVER COPPERIZE. |
| SS16M2F | GOLD FLASH PLATING OVER NICKEL. |
| SS16M2G5 | 5 μ "GOLD PLATING OVER NICKEL. |
| SS16M2G10 | 10 μ "GOLD PLATING OVER NICKEL. |
| SS16M2G15 | 15 μ "GOLD PLATING OVER NICKEL. |
| SS16M2G30 | 30 μ "GOLD PLATING OVER NICKEL. |



SECTION A-A



SECTION B-B



| QUANTITY | PART NUMBER | DESCRIPTION | ITEM |
|---|-------------|---|------|
| MATERIALS LIST | | | |
| UNLESS OTHERWISE SPECIFIED 1) All dimensions are in millimeters. 2) Tolerances are as follows: 1 PL DEC 20.30 Fractions .1"=4 3 PL DEC 20.08 Angles .1° | | | |
| 3) Note reference = Δ | | | |
| MATERIAL SPECIFICATIONS: | | CUSTOMER: Tommy Jul-16-18 | |
| PROCESS SPECIFICATIONS: | | THE DRAWING IS SUPERSEDED BY ANY LATER REVISIONS. SPECIFICATIONS AND PERFORMANCE DATA OF REPRODUCTION ARE LIMITED. ALL MANUFACTURING VARIATIONS. | |
| NEXT ASSY: | | SIZE: B TYPE: C- DWG NO: SS16M2XX SHEET: 1 OF 1 | |
| MATERIALS LIST Amphenol Sine Systems - www.amphenol-sine.com 44724 Morley Drive Clinton Township, MI 48036 | | ECO-MATE SOCKET CONTACT, STAMPED, 16-18AWG, SIZE 16 | |