

THIS DRAWING IS UNPUBLISHED.

RELEASED FOR PUBLICATION

2005

© COPYRIGHT 2005 BY -

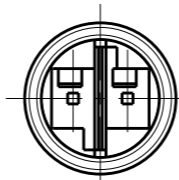
ALL RIGHTS RESERVED.

REVISIONS

| P | LTR | DESCRIPTION | DATE | DWN | APVD |
|---|-----|---------------------------|-----------|-----|------|
| G | | REVISED PER ECR-16-002347 | 22FEB2016 | RS | JL |
| H | | ECR-16-003641 | 11MAY2016 | RS | JL |
| J | | ECR-16-017348 | 24FEB2017 | RK | JL |
| M | | REVISED PER ECO-17-008502 | 17JUL2017 | SK | JL |

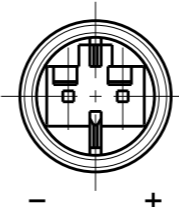
HIGH-VOLTAGE

Keying HV-1



LOW-VOLTAGE

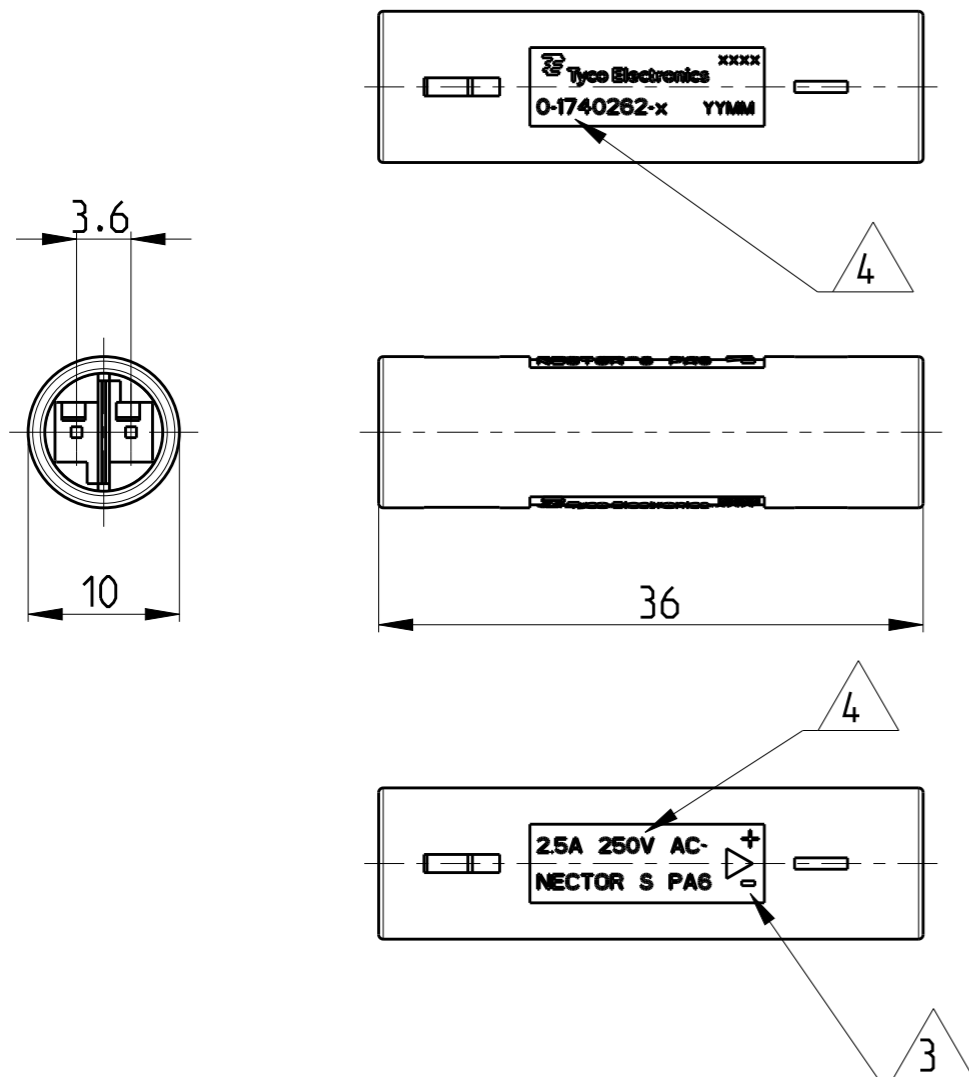
Keying LV-2



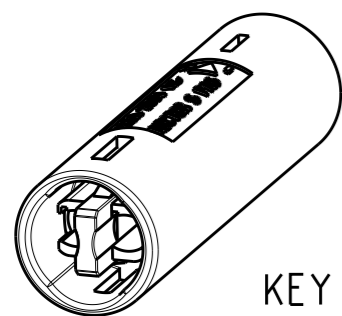
Notes:

1. cavities designed for MQS Pin contact PN 1740335-x
2. Counterpart is Plug PN 1740259-x and corresponding products of the NECTOR S family

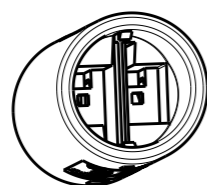
- △3 Polarity marking +/- only for DC version (Keying LV-2)
- △4 PN specific marking
- △5 OBSOLETED.



| | | | | |
|--------|---------------------------|----------------|-----------------------|-------------|
| LV-2 | LOW-VOLTAGE 125VAC/VDC | 7A/125VAC/VDC | BLACK | 0-1740451-3 |
| LV-2 | LOW-VOLTAGE 125VAC/VDC | 7A/125VAC/VDC | YELLOW | 0-1740451-2 |
| LV-1 | LOW-VOLTAGE 125VAC/VDC | 7A/125VAC/VDC | LIGHT GREY | 0-1740451-1 |
| HV-3 | HIGH-VOLTAGE 125V AC | 6A/125V AC ~ | BLUE | 0-1740262-6 |
| HV-1 | HIGH-VOLTAGE 250V AC | 2.5A/250V AC ~ | BLACK (ANTHRACITE) | 0-1740262-2 |
| HV-1 | HIGH-VOLTAGE 250V AC | 2.5A/250V AC ~ | NATURAL (WHITE) | 0-1740262-1 |
| Keying | REMARKS | Marking | COLOR | PN |



KEYING HV-1 AS SHOWN



1:1

THIS DRAWING IS A CONTROLLED DOCUMENT.

DWN H.ATZMANN 07FEB2005

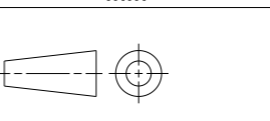
CHK M.OFENLOCH 07FEB2005

APVD T.GERLACH 07FEB2005



DIMENSIONS: mm

TOLERANCES UNLESS OTHERWISE SPECIFIED:



| | |
|--------|------|
| 0 PLC | ±0.2 |
| 1 PLC | ±0.2 |
| 2 PLC | ±0.2 |
| 3 PLC | ± |
| 4 PLC | ± |
| ANGLES | ±1° |
| FINISH | - |

MATERIAL PA 6

PRODUCT SPEC

108-94018

APPLICATION SPEC

114-18751

WEIGHT 2.2 g

NAME NECTOR S Connector System Outlet

SIZE CAGE CODE DRAWING NO RESTRICTED TO

A3 00779 C-1740262

CUSTOMER DRAWING

SCALE 2:1 SHEET 1 OF 1 REV M