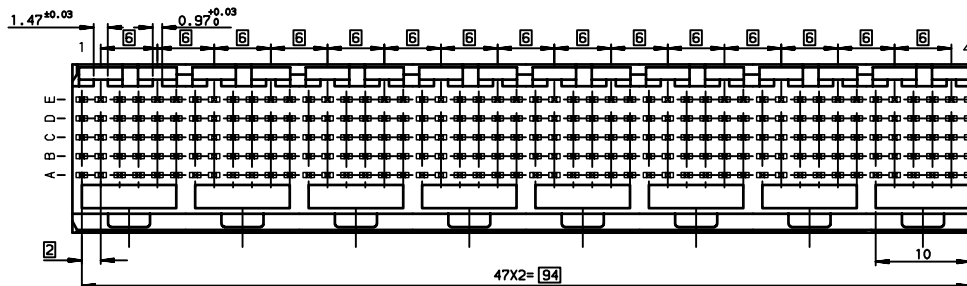


Hole according to product spec
 GS-12-445 (for press-fit) ,
 GS-12-446 (for STB)



TIN LEAD PART NUMBER

Part Number: HM1L54xDP000H6					
MATING LENGTH DIM-P / REPLACE 'x' BY:					
	ROW-A	ROW-B	ROW-C	ROW-D	ROW-E
A =	5.00	5.00	5.00	5.00	5.00
L =	5.75	5.75	5.75	5.75	5.75
D =	6.50	6.50	6.50	6.50	6.50
B =	6.50	5.00	5.00	5.00	5.00
C =	6.50	5.75	5.75	6.50	5.75

LEAD-FREE PART NUMBER

Part Number: HM1L54xDP000H6LF					
MATING LENGTH DIM-P / REPLACE 'x' BY:					
	ROW-A	ROW-B	ROW-C	ROW-D	ROW-E
A =	5.00	5.00	5.00	5.00	5.00
L =	5.75	5.75	5.75	5.75	5.75
D =	6.50	6.50	6.50	6.50	6.50
B =	6.50	5.00	5.00	5.00	5.00
C =	6.50	5.75	5.75	6.50	5.75

GENERAL CHARACTERISTICS AND ROHS INFORMATIONS:

SEE PRODUCT SPECIFICATION GS-12-445

- NOTE-2: FLAT ROCK INSERTION TOOLING, ON ALL THIS SURFACE
- NOTE-3: EYE OF THE NEEDLE PRESS FIT PIN TYPE
- NOTE-4: REAR CENTRAL SUPPORT FOR BETTER ASSY ON PCB
- NOTE-5: IF SUFFIX "P" IS ADDED IN P/N PACKAGING IS IN TRAYS BUT CONNECTOR MARKING IS WITHOUT "P"
 EXAMPLE: HM1XXXXXXXXXHP, MARKED HM1XXXXXXXXXHG

rev	ecn no	dr	date
G	-	MAS	2000/08/29
H	L505-004	MLE	2005/02/17
J	L506-0097	LGO	2006/07/21
K	L507-0184	MLE	2007/07/24
-	-	-	-
-	-	-	-

www.fciconnect.com		surface	tolerance std	projection	mm
Dr	ETIEMBRE	ISO 1302	ISO 406 ISO 1101		
Eng	LENOIR	TOLERANCES UNLESS OTHERWISE SPECIFIED			
Chr	LEGARE	ANGULAR	0.x	±0.1	size
Appr	LEGARE	LINEAR	0.xx	±0.1	A2
		0.x ⁿ ±2	0.xxx	±0.1	Scale
		Product Family	METRAL	Spec ref	2.5
METRAL RA HEADER 5 ROW				ECN L507-0184	
STANDARD PRESS-FIT 240 WAY				C-8626-0238-1	
catalog no				CUSTOMER sheet 1 of 1	